

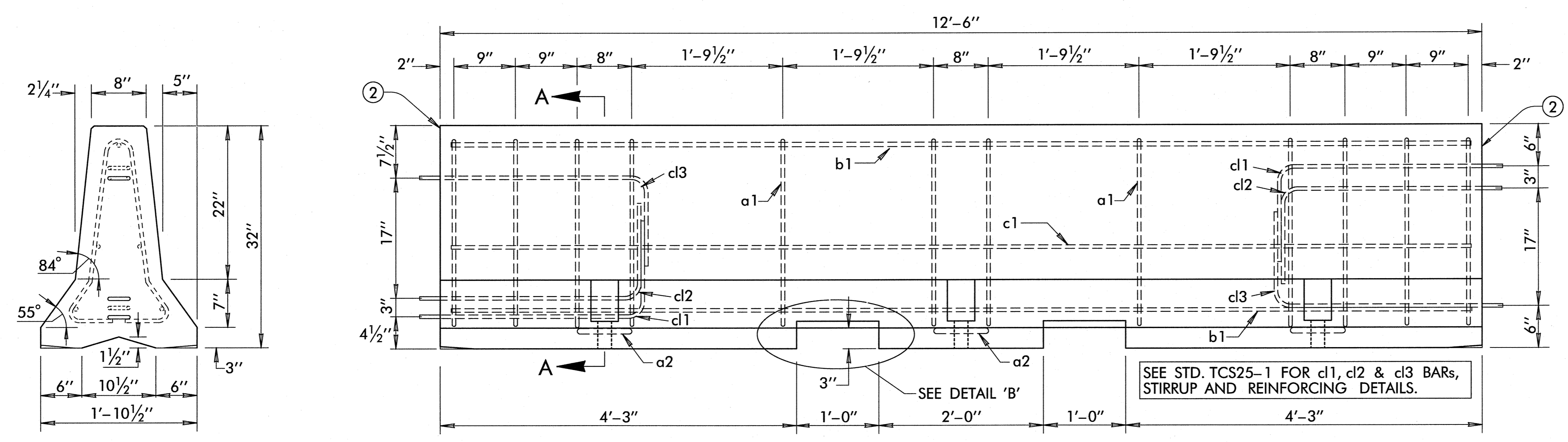
DESCRIPTION	REVISIONS	DATE
CHANGED DIMENSION		2/25/2011
ADDED DELINEATORS/NOTES		11/09/2011

DRAWING NOTES:

- ① 1 INCH RADIUS ALLOWED FOR EASE OF CASTING (BOTH SIDES).
- ② THE TOP SURFACE OF ONE END OF EACH BARRIER UNIT SHALL BE PERMANENTLY MARKED INDICATING THE FOLLOWING INFORMATION:
 - NCHRP REPORT 350 APPROVED
 - TYPE F BARRIER
 - MANUFACTURER IDENTIFICATION
 - DATE MANUFACTURED (MONTH AND YEAR)
 EXAMPLE: 350F-SM9/01 (SM=SMITH MATERIALS)
- ③ 1 INCH CHAMFER TO PREVENT SPALLING (BOTH SIDES).

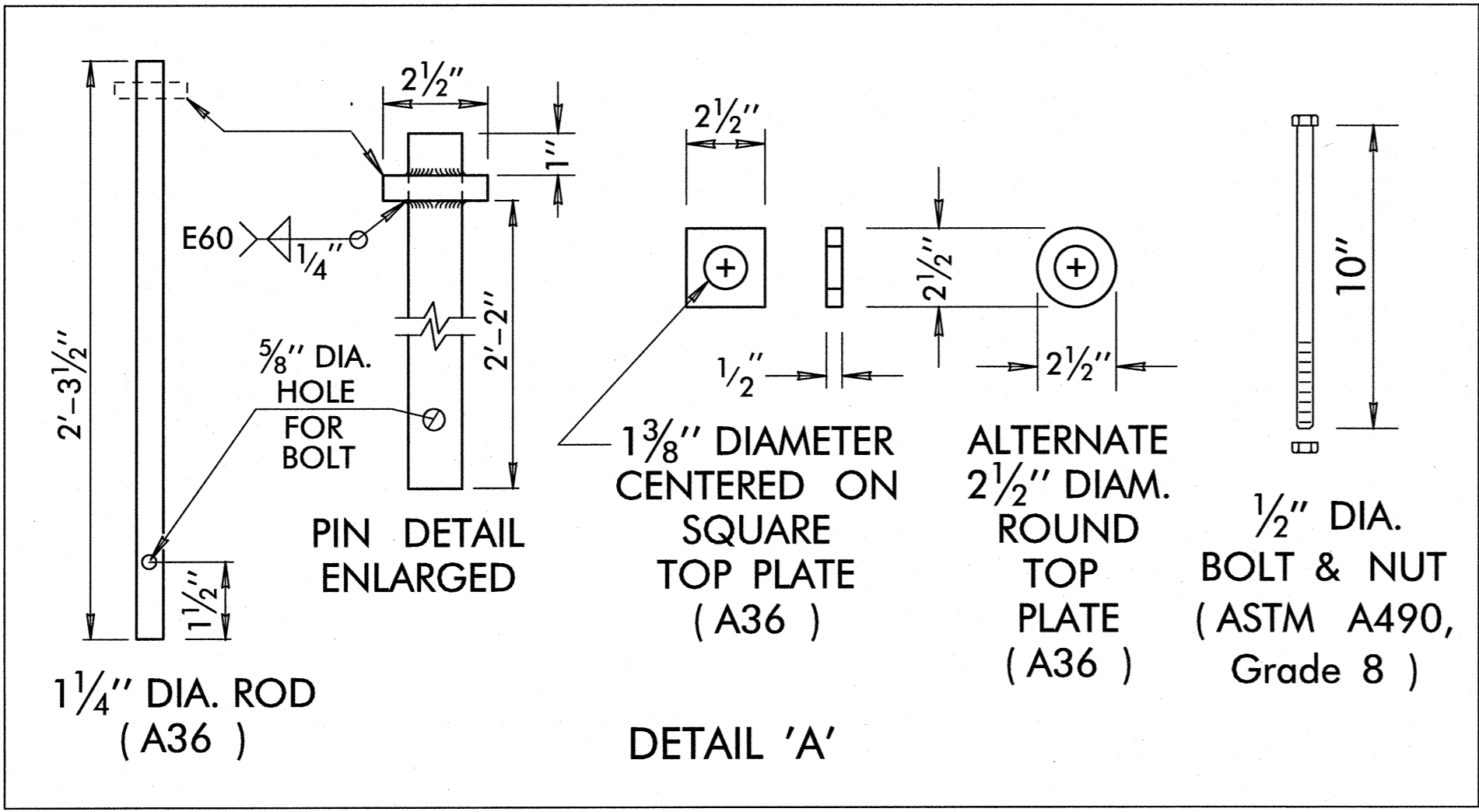
GENERAL NOTES:

1. ALL CONSTRUCTION AND MATERIAL REQUIREMENTS OF THE PORTABLE PRECAST CONCRETE MEDIAN BARRIER, PROVIDED BY THE CONTRACTOR, SHALL BE IN ACCORDANCE WITH THE 2009 ENGLISH STANDARD SPECIFICATIONS & MEET REQUIREMENTS OF NCHRP REPORT 350, TEST LEVEL 3. CONTRACTOR MAY PROVIDE ANY PORTABLE F-SHAPE BARRIER DESIGN MEETING THE REQUIREMENTS OF NCHRP REPORT 350, SO LONG AS THE MATERIAL REQUIREMENTS OF 2009 STANDARD SPECIFICATIONS ARE MET.
2. CONCRETE FOR PORTABLE PRECAST CONCRETE MEDIAN BARRIER SHALL REACH A MINIMUM OF 4000 PSI STRENGTH AFTER 28 DAYS.
3. ALL REINFORCEMENT SHALL BE DEFORMED GRADE 60, AASHTO M 31, EXCEPT FOR THE CONNECTION LOOP BAR ASSEMBLY SHALL BE SMOOTH #6 BARS WITH A MINIMUM YIELD STRENGTH OF 60 KSI, A MINIMUM TENSILE STRENGTH OF 80 KSI, AND PASSING A 180 DEGREE BEND TEST USING A 2 3/4" PIN BEND DIAMETER. THE LOOPS SHALL BE INSTALLED WITHIN 1/8" OF THE PLAN DIMENSIONS.
4. CONTRACTOR SHALL FURNISH AND INSTALL REFLECTIVE MARKERS ON BARRIER AS RECOMMENDED BY THE MANUFACTURER AND SHOWN ON THIS SHEET. DELINEATORS USED MUST BE ON THE OKLAHOMA DEPARTMENT OF TRANSPORTATION QUALIFIED PRODUCTS LIST (QPL) AT <http://www.okladot.state.ok.us/traffic/qpl/index.php>. TWO MARKERS ON EACH SIDE OF THE BARRIER SHALL BE INSTALLED AT NOMINAL 12.5 FOOT SPACING AND FACE ONCOMING TRAFFIC. THE CONTRACTOR SHALL MAINTAIN THE MARKERS AND PROMPTLY REPAIR OR REPLACE ANY DAMAGED OR MISSING UNITS. ALL COSTS FOR FURNISHING, INSTALLING AND MAINTAINING MARKERS SHALL BE INCLUDED IN THE PRICE BID FOR THE PORTABLE LONGITUDINAL BARRIER.
5. UNLESS STATED OTHERWISE IN THE PLANS, THE BARRIER RAIL SECTIONS SHALL REMAIN THE PROPERTY OF THE CONTRACTOR AND AT THE COMPLETION OF THE WORK SHALL BE REMOVED FROM THE SITE BY CONTRACTOR.
6. WHEN TEMPORARY BARRIER RAIL IS INSTALLED WITHIN 2 FEET OF A DROPOFF, BARRIER SECTIONS SHALL BE ANCHORED WITH TIE DOWN PINS AS DESCRIBED AND SHOWN ON TIE-DOWN DETAIL, THIS SHEET. SEE ROADWAY STD. PDT-1-(LATEST REVISION) FOR PAVEMENT EDGE DROP-OFF DETAILS.
7. PAVEMENT MARKERS OR TEMPORARY FLEXIBLE-REFLECTIVE ROADWAY MARKER TABS SHALL NOT BE USED AS BARRIER DELINEATION.
8. CONTRACTOR MAY USE STEEL BARRIER INSTEAD OF CONCRETE BARRIER. THE STEEL BARRIER USED MUST BE ON THE OKLAHOMA DEPARTMENT OF TRANSPORTATION QUALIFIED PRODUCTS LIST (QPL) AT <http://www.okladot.state.ok.us/traffic/qpl/index.php>.

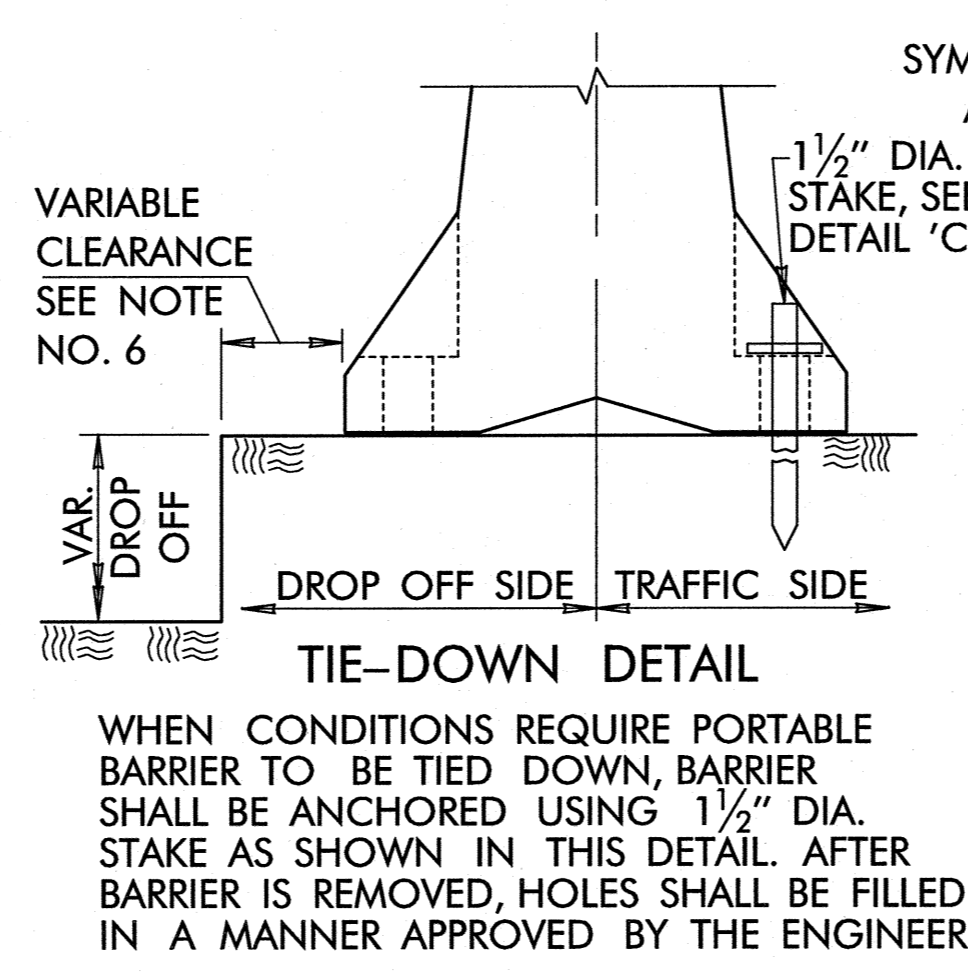


END VIEW

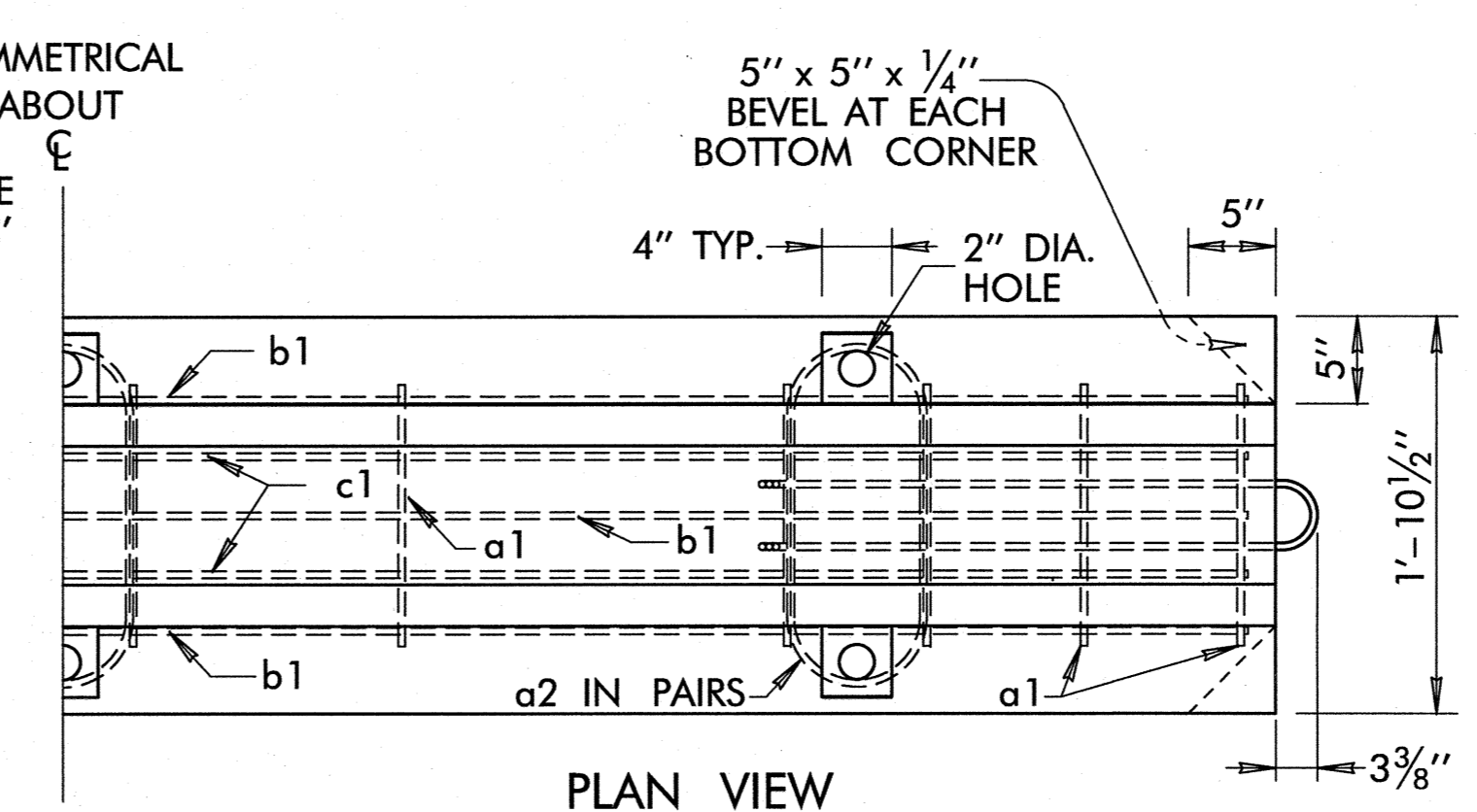
ELEVATION VIEW



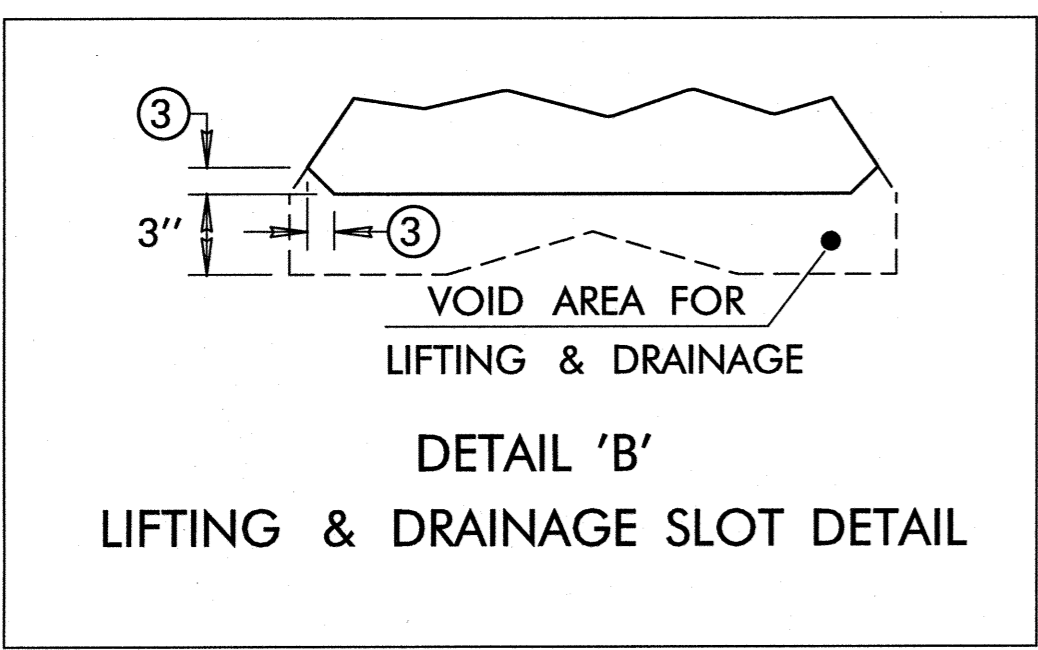
DETAIL 'A'



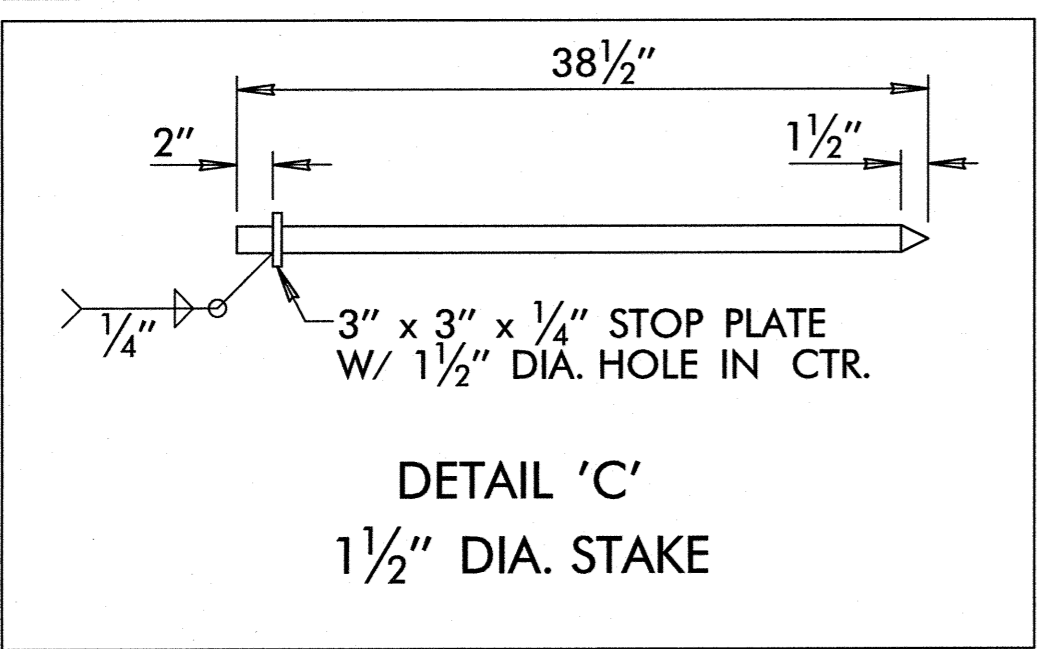
TIE-DOWN DETAIL



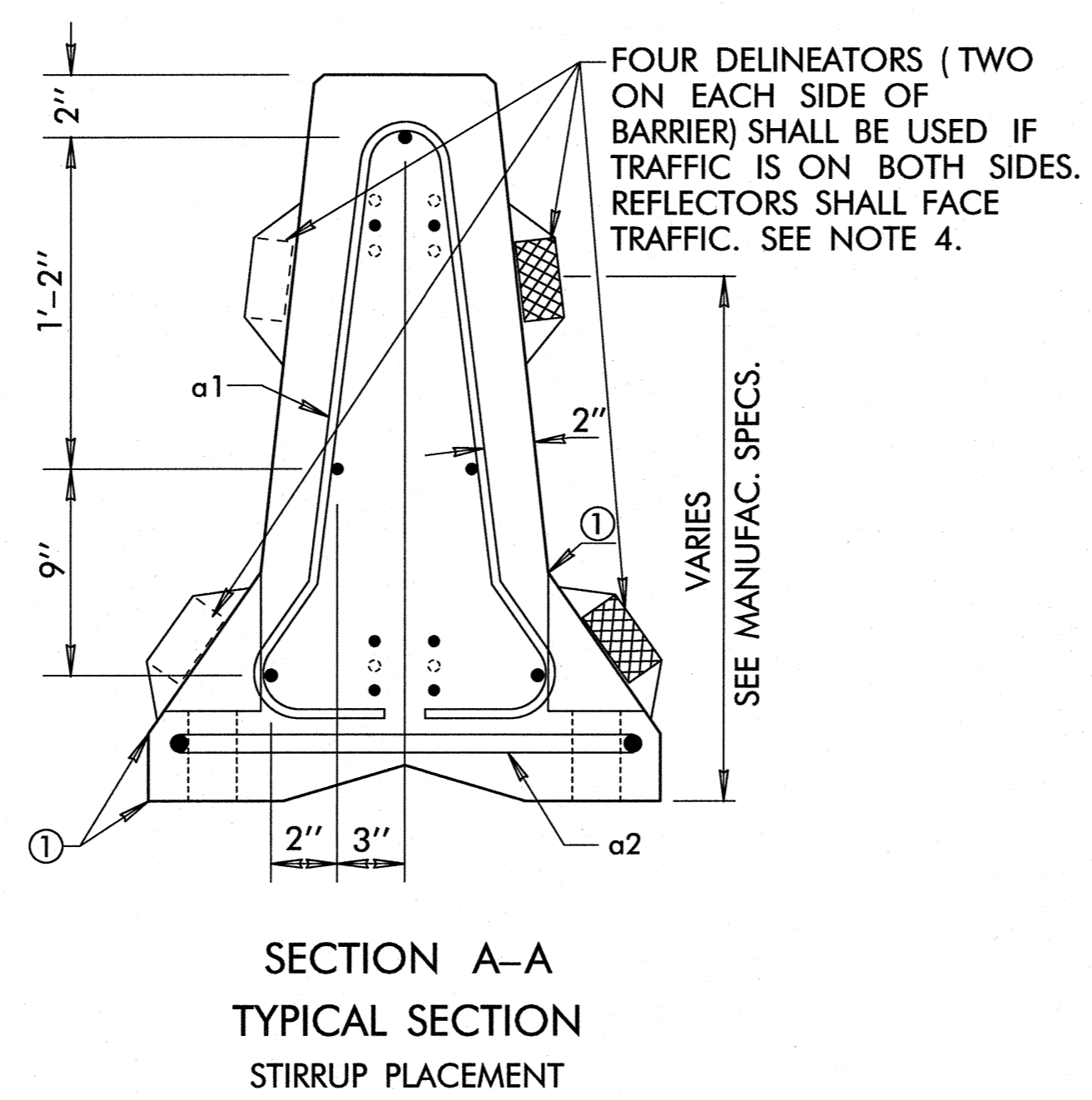
PLAN VIEW



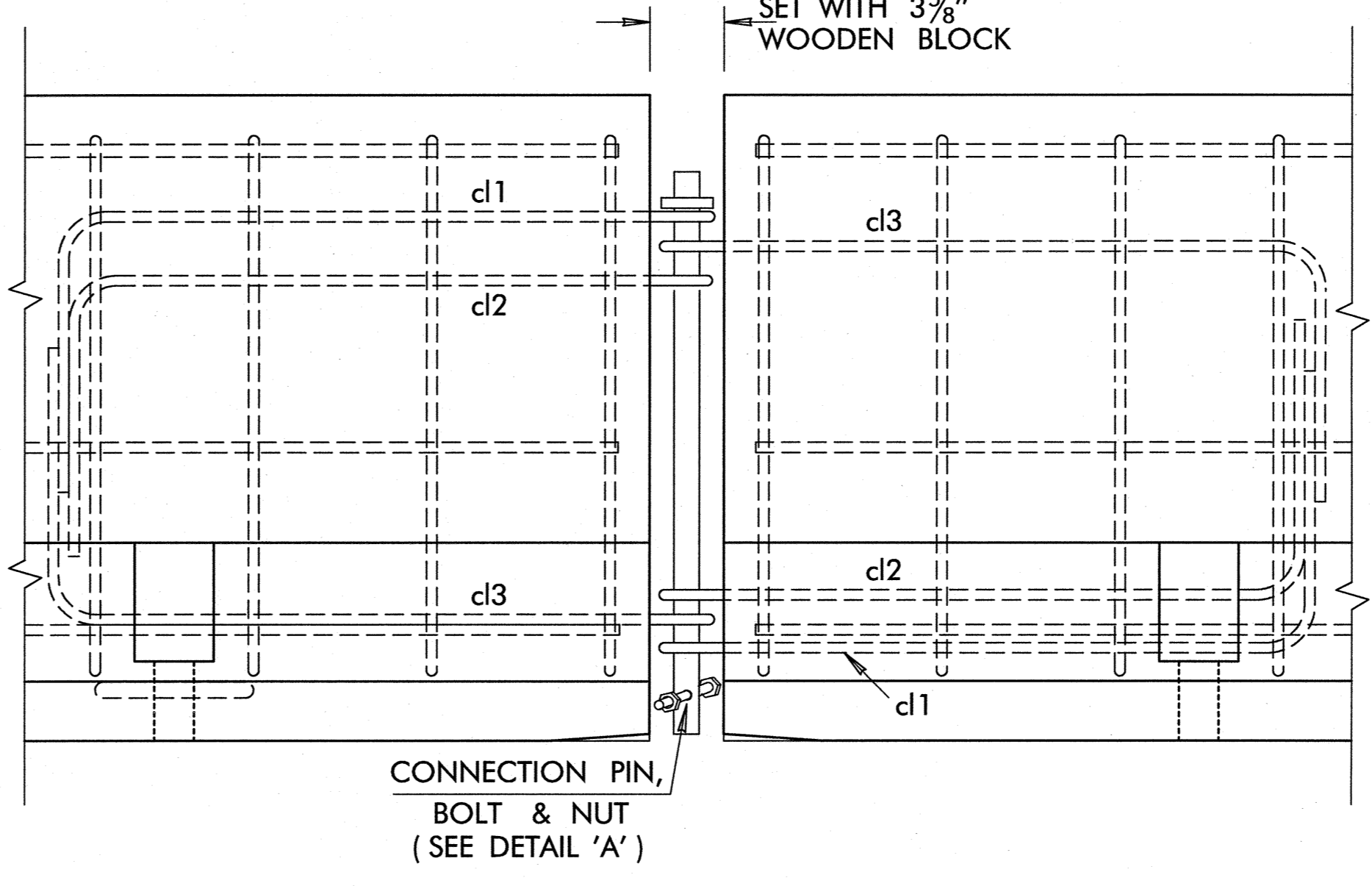
DETAIL 'B'
LIFTING & DRAINAGE SLOT DETAIL



DETAIL 'C'
1 1/2" DIA. STAKE



SECTION A-A
TYPICAL SECTION
STIRRUP PLACEMENT



DETAILS OF BARRIER SECTION CONNECTION

BASIS OF PAYMENT		
ITEM NO.	ITEM	UNIT
877(A)	PORTABLE LONGITUDINAL BARRIER	L.F.
877(B)	DELIVER PORTABLE LONGITUDINAL BARRIER	L.F.
877(C)	RELOCATION OF PORT. LONGITUDINAL BARRIER	L.F.

THIS STANDARD SHALL BE USED IN CONJUNCTION WITH TCS25-1.

APPROVED BY: *[Signature]* DATE: 11/9/2011
 TRAFFIC ENGINEER

OKLAHOMA DEPARTMENT OF TRANSPORTATION
 TRAFFIC STANDARD
 TRAFFIC CONTROL STANDARD
 PORTABLE LONGITUDINAL BARRIER

\$\$\$date\$\$\$