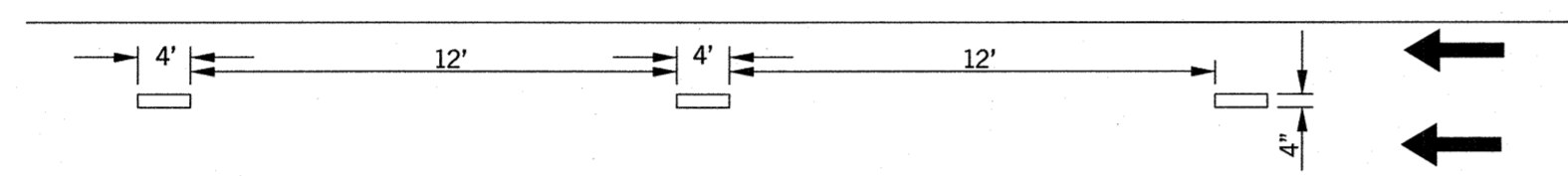
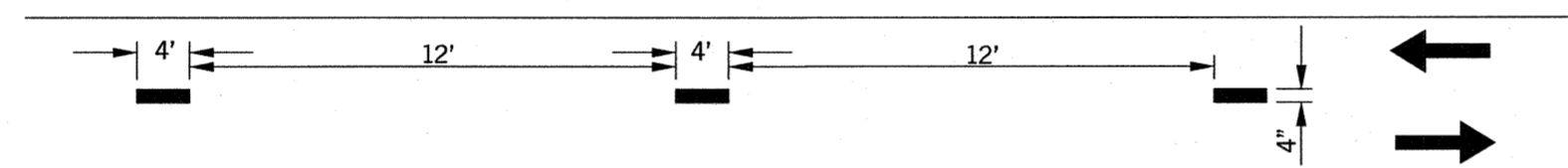


CONSTRUCTION ZONE PAVEMENT MARKINGS THRU SHOO-FLY

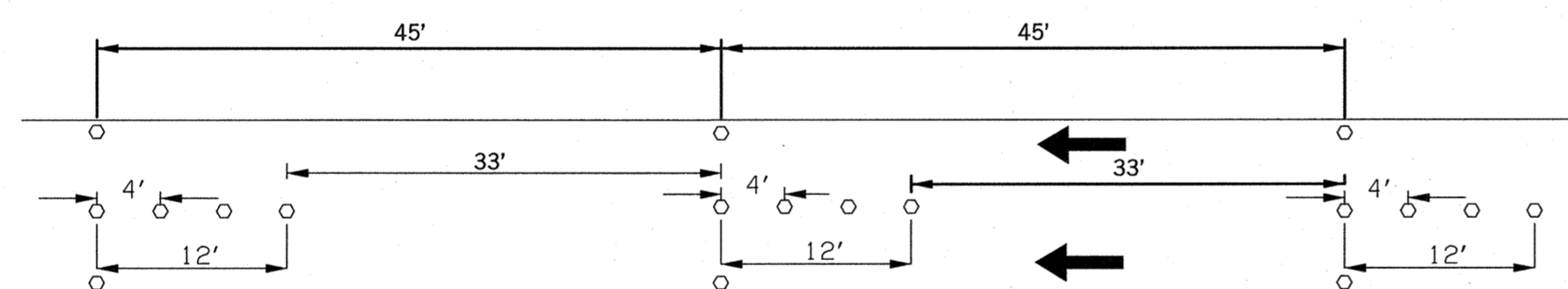


**ONE-WAY PAVEMENT MARKING
REMOVABLE TAPE OR PAINT**

PAVEMENT MARKINGS: REMOVABLE TAPE OR PAINT
 WIDTH OF STRIPED LANE LINES SHALL BE A MINIMUM OF 4".
 INTERMEDIATE-TERM STATIONARY PAVEMENT MARKINGS ARE THOSE THAT MAY BE USED UNTIL THE EARLIEST DATE WHEN IT IS PRACTICAL AND POSSIBLE TO INSTALL PERMANENT PAVEMENT MARKINGS THAT MEET THE FULL OKLAHOMA DEPARTMENT OF TRANSPORTATION STANDARDS FOR PAVEMENT MARKINGS.

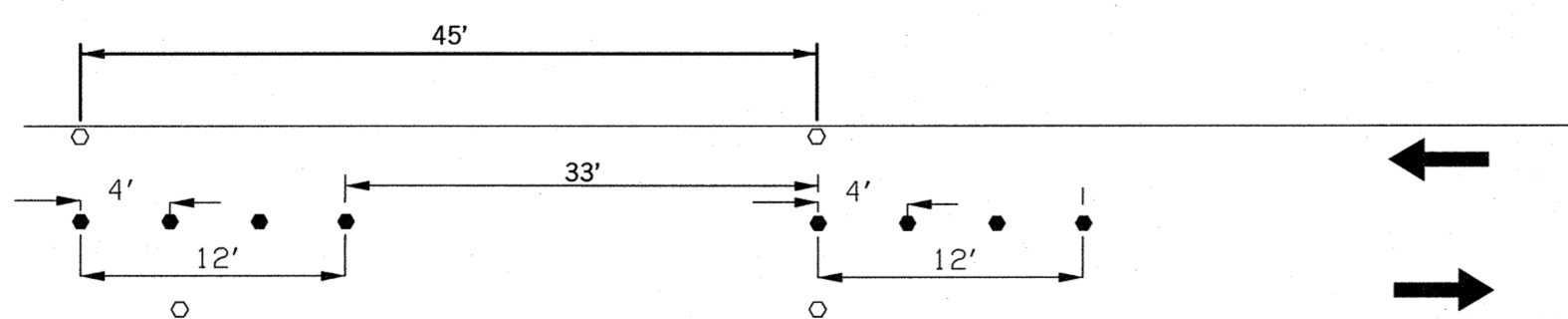


**TWO-WAY PAVEMENT MARKING
REMOVABLE TAPE OR PAINT**



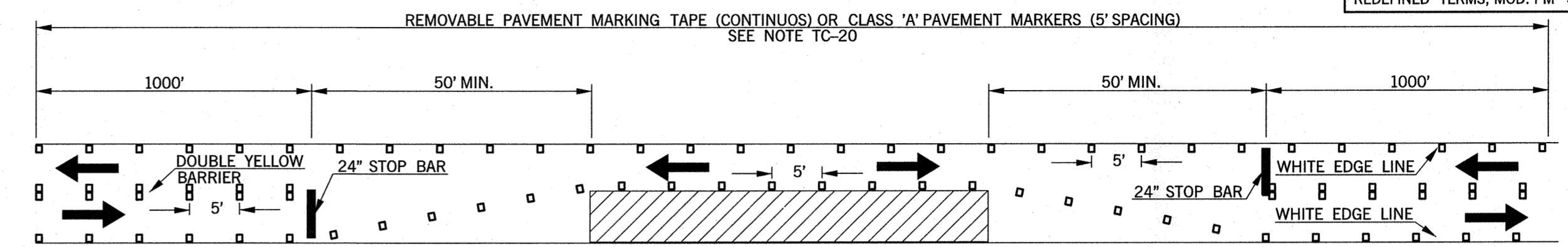
**ONE-WAY PAVEMENT MARKING
FLEX TABS**

PAVEMENT MARKINGS: FLEX TABS
 TYPE I - FLEX TAB MARKERS SHALL HAVE REFLECTORIZED MATERIAL ON BOTH SIDES.
 TYPE II - FLEX TAB MARKERS SHALL HAVE REFLECTORIZED MATERIAL ON BOTH SIDES AND SHALL HAVE A CLEAR REMOVABLE COVER.
 FLEX TABS MAY BE INSTALLED AS SHOWN FOR LONG-TERM STATIONARY PAVEMENT MARKINGS.



**TWO-WAY PAVEMENT MARKING
FLEX TABS**

INTERMEDIATE-TERM STATIONARY PAVEMENT MARKINGS



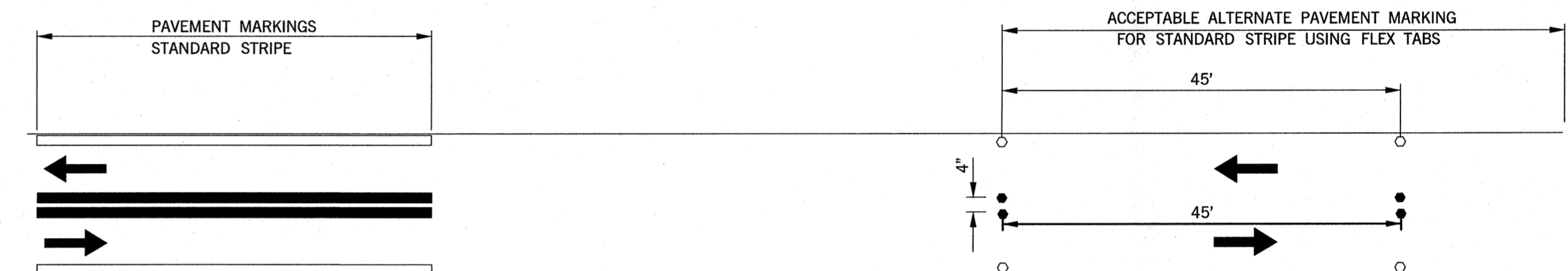
**TYPICAL PAVEMENT MARKINGS FOR ONE LANE CLOSURE ON TWO LANE /TWO WAY ROADWAY
REMOVABLE TAPE OR CONSTRUCTION ZONE PAVEMENT MARKERS**

NOTES:

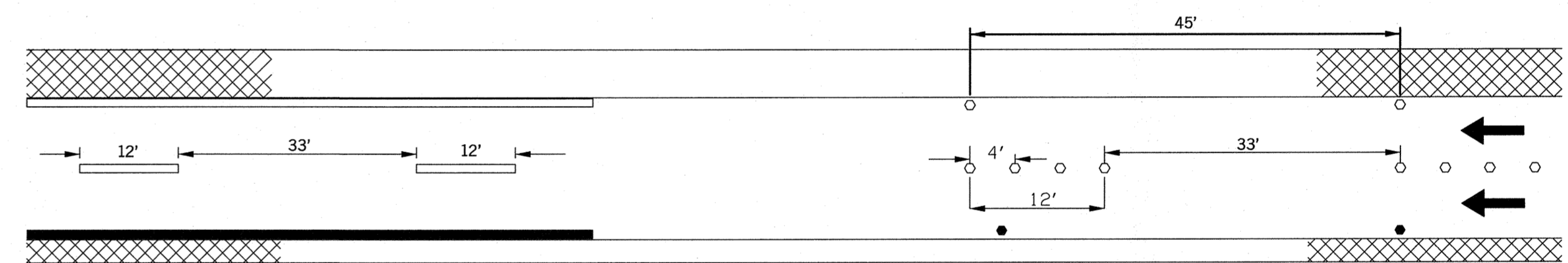
CONSTRUCTION ZONE PAVEMENT MARKINGS SHALL CONSIST OF EITHER PAINT, CONSTRUCTION ZONE PAVEMENT MARKERS (FLEX TABS) OR REMOVABLE MARKING TAPE. THERMO-PLASTIC STRIPE MAY BE USED IN CONJUNCTION WITH PAINT, FLEX TABS OR TAPE WHEN SPECIFIED IN THE PLANS.
 ALL PAVEMENT MARKINGS TO BE PLACED ON TEMPORARY SURFACES OR ON SURFACES SCHEDULED TO BE REMOVED SHALL BE DONE WITH PAINT UNLESS OTHERWISE SHOWN IN THE PLANS OR STANDARD DRAWINGS. ALL FINAL OR FINISHED SURFACES SHALL BE MARKED WITH EITHER REMOVABLE PAVEMENT MARKING TAPE OR CONSTRUCTION ZONE PAVEMENT MARKERS, UNLESS OTHERWISE NOTED ON THE PLANS.
 WIDTH OF STRIPED LANE LINES SHALL BE A MINIMUM OF 4".

KEY:

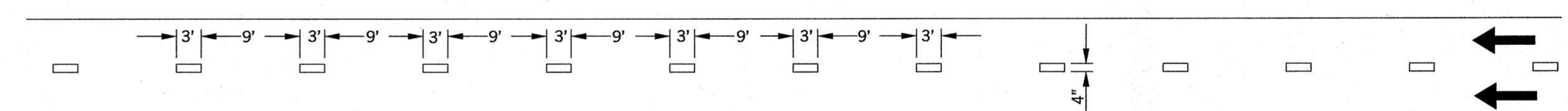
- WORK ZONE
- WHITE LANE LINE (PAINT OR TAPE)
- YELLOW LANE LINE (PAINT OR TAPE)
- WHITE FLEX TAB
- YELLOW FLEX TAB
- CLASS A PAVEMENT MARKER



TWO-LANE /TWO-WAY



**4 -LANE
DIVIDED ROADWAY**

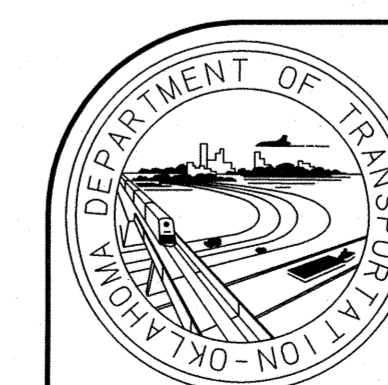


WHITE DOTTED LINE

LONG-TERM STATIONARY PAVEMENT MARKINGS

MUTCD DEFINITIONS OF THE FIVE CATEGORIES OF WORK DURATION, AND THEIR TIME AT A LOCATION SHALL BE:

- A. LONG-TERM STATIONARY IS WORK THAT OCCUPIES A LOCATION MORE THAN 3 DAYS.
- B. INTERMEDIATE-TERM STATIONARY IS WORK THAT OCCUPIES A LOCATION MORE THAN ONE DAYLIGHT PERIOD UP TO 3 DAYS, OR NIGHTTIME WORK LASTING MORE THAN 1 HOUR.
- C. SHORT-TERM STATIONARY IS DAYTIME WORK THAT OCCUPIES A LOCATION FOR MORE THAN 1 HOUR WITHIN A SINGLE DAYLIGHT PERIOD.
- D. SHORT DURATION IS WORK THAT OCCUPIES A LOCATION UP TO 1 HOUR.
- E. MOBILE IS WORK THAT MOVES INTERMITTENTLY OR CONTINUOUSLY.



APPROVED BY
 TRAFFIC ENGINEER: *Daniel Smith* DATE: 4/8/2013

TRAFFIC STANDARD

TRAFFIC CONTROL STANDARD
 CONSTRUCTION ZONE PAVEMENT MARKINGS

2009 SPECIFICATIONS

TCS21-1 02
 T-521