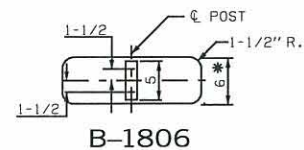
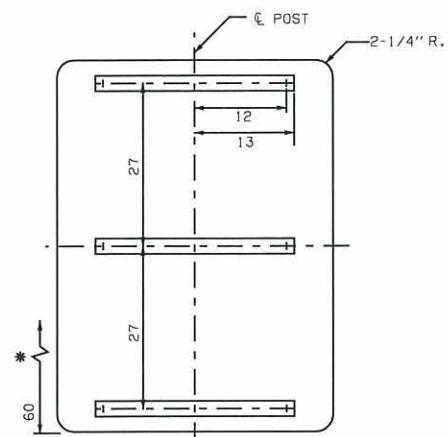


DESCRIPTION	REVISIONS	DATE

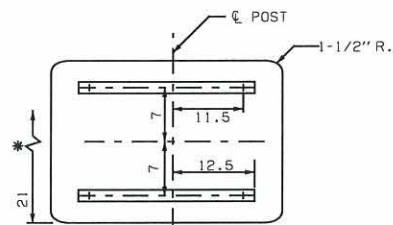


B-1806

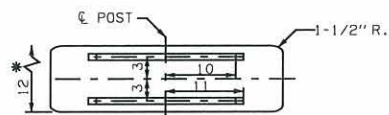


B-3660

(2) 2" SQUARE TUBE POSTS
(1) 3" PIPE POST



B-3021



B-3012

NOTES:

- * ALL POSTS SHALL EXTEND 2" ABOVE THE TOP SIGN BRACKET, BUT NOT ABOVE THE TOP OF THE SIGN.
 - ▲ SIGN BLANK THICKNESS SHALL BE .060" ALUMINUM OR 16 GAUGE STEEL.
 - VERTICAL SIGN BRACKET ONLY.
- ALL DIMENSIONS ARE IN INCHES UNLESS OTHERWISE SPECIFIED.



APPROVED BY
TRAFFIC ENGINEER: *David J. Smith* DATE: 8/5/10

TRAFFIC STANDARD

SIGN BLANK AND BRACKET DETAILS