



TWO-WAY TRAFFIC

W6-3	36 x 36	9.00 SF
W6-3E	48 x 48	16.00 SF

COLOR:
 BORDER AND ARROW:
 BLACK (NON-REFLECTORIZED)
 BACKGROUND:
 FLOURESCENT YELLOW
 (REFLECTORIZED)



SLIPPERY WHEN WET

W8-5	30 x 30	6.25 SF
W8-5E	36 x 36	9.00 SF
W8-5F	48 x 48	16.00 SF

COLOR:
 BORDER AND SYMBOL:
 BLACK (NON-REFLECTORIZED)
 BACKGROUND:
 FLOURESCENT YELLOW
 (REFLECTORIZED)



TRUCK CROSSING

W8-6	36 x 36	9.00 SF
W8-6F	48 x 48	16.00 SF

COLOR:
 BORDER AND LEGEND:
 BLACK (NON-REFLECTORIZED)
 BACKGROUND:
 FLOURESCENT YELLOW
 (REFLECTORIZED)



BRIDGE ICES BEFORE ROAD

W8-13	30 X 30	6.25 SF
W8-13E	36 X 36	9.00 SF
W8-13F	48 X 48	16.00 SF

COLOR:
 BORDER AND LEGEND:
 BLACK (NON-REFLECTORIZED)
 BACKGROUND:
 FLOURESCENT YELLOW
 (REFLECTORIZED)

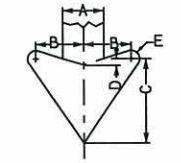


RAILROAD ADVANCE WARNING

W10-1	36 DIA	7.07 SF
W10-1E	48 DIA	12.57 SF

COLOR:
 BORDER, LEGEND AND SYMBOL:
 BLACK (NON-REFLECTORIZED)
 BACKGROUND:
 FLOURESCENT YELLOW
 (REFLECTORIZED)

DESCRIPTION	REVISIONS	DATE
-------------	-----------	------



ARROW DIMENSIONS				
A	B	C	D	E
6"	5-3/16"	9-1/8"	11/16"	7/8"

ARROW DETAILS FOR W13-6 & W13-7



PEDESTRIAN CROSSING

W11-2	30 x 30	6.25 SF
W11-2E	36 x 36	9.00 SF

COLOR:
 BORDER AND SYMBOL:
 BLACK (NON-REFLECTORIZED)
 BACKGROUND:
 FLOURESCENT YELLOW
 (REFLECTORIZED)



TRUCK CROSSING

W11-10	30 x 30	6.25 SF
W11-10E	36 x 36	9.00 SF
W11-10F	48 x 48	16.00 SF

COLOR:
 BORDER AND SYMBOL:
 BLACK (NON-REFLECTORIZED)
 BACKGROUND:
 FLOURESCENT YELLOW
 (REFLECTORIZED)



DOUBLE ARROW

W12-1	30 x 30	6.25 SF
W12-1E	36 x 36	9.00 SF

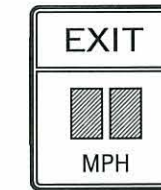
COLOR:
 BORDER AND ARROW:
 BLACK (NON-REFLECTORIZED)
 BACKGROUND:
 FLOURESCENT YELLOW
 (REFLECTORIZED)



ADVISORY SPEED

W13-1P	18 x 18	2.25 SF
W13-1PE	24 x 24	4.00 SF
W13-1PF	30 x 30	6.25 SF

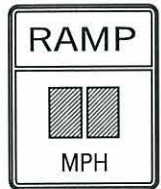
COLOR:
 BORDER AND LEGEND:
 BLACK (NON-REFLECTORIZED)
 BACKGROUND:
 FLOURESCENT YELLOW
 (REFLECTORIZED)



ADVISORY EXIT SPEED

W13-2	24 x 30	5.00 SF
W13-2E	36 x 48	12.00 SF
W13-2F	48 x 60	20.00 SF

COLOR:
 BORDER AND LEGEND:
 BLACK (NON-REFLECTORIZED)
 BACKGROUND:
 FLOURESCENT YELLOW
 (REFLECTORIZED)



ADVISORY RAMP SPEED

W13-3	24 x 30	5.00 SF
W13-3E	36 x 48	12.00 SF
W13-3F	48 x 60	20.00 SF

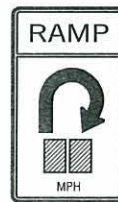
COLOR:
 BORDER AND LEGEND:
 BLACK (NON-REFLECTORIZED)
 BACKGROUND:
 FLOURESCENT YELLOW
 (REFLECTORIZED)



ADVISORY EXIT SPEED

W13-6E	36 x 60	15.00 SF
W13-6F	48 x 84	28.00 SF

COLOR:
 BORDER AND ARROW:
 BLACK (NON-REFLECTORIZED)
 BACKGROUND:
 FLOURESCENT YELLOW
 (REFLECTORIZED)



ADVISORY RAMP SPEED

W13-7E	36 x 60	15.00 SF
W13-7F	48 x 84	28.00 SF

COLOR:
 BORDER AND ARROW:
 BLACK (NON-REFLECTORIZED)
 BACKGROUND:
 FLOURESCENT YELLOW
 (REFLECTORIZED)



ARROW

W16-7p	24 x 12	2.00 SF
W16-7pE	30 x 18	3.75 SF

COLOR:
 BORDER AND ARROW:
 BLACK (NON-REFLECTORIZED)
 BACKGROUND:
 FLOURESCENT YELLOW
 (REFLECTORIZED)

SIGN SIZE	DIMENSIONS				
	A	B	C	D	E
30" X 30"	3-3/4"	4-5/16"	7-5/8"	9/16"	3/4"
36" X 36"	4-1/2"	5-3/16"	9-1/8"	11/16"	7/8"
48" X 48"	6"	6-7/8"	12-3/16"	15/16"	1-3/16"

ARROW DETAILS FOR W6-3 & W6-3E

SIGNS	MARGIN	BORDER	BLANK
30 x 30	.500	.750	B-30(D)
36 x 36	.625	.875	B-36(D)
48 x 48	.750	1.250	B-48(D)

BASIS OF PAYMENT

ITEM NO.	ITEM	UNIT
850(A)	SHEET ALUMINUM SIGNS	SF



APPROVED BY
 TRAFFIC ENGINEER: *David Gandy* DATE: 8/13/10

TRAFFIC STANDARD
 WARNING SIGN DETAILS
 (W-SERIES)