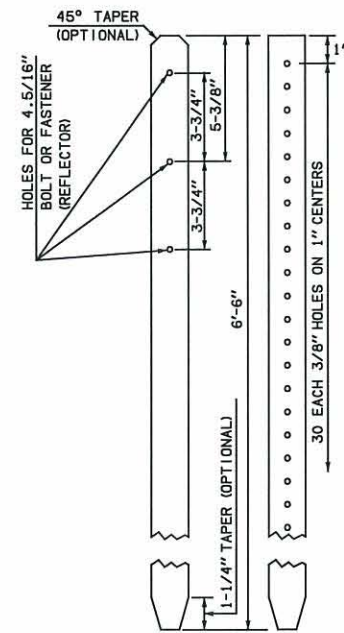
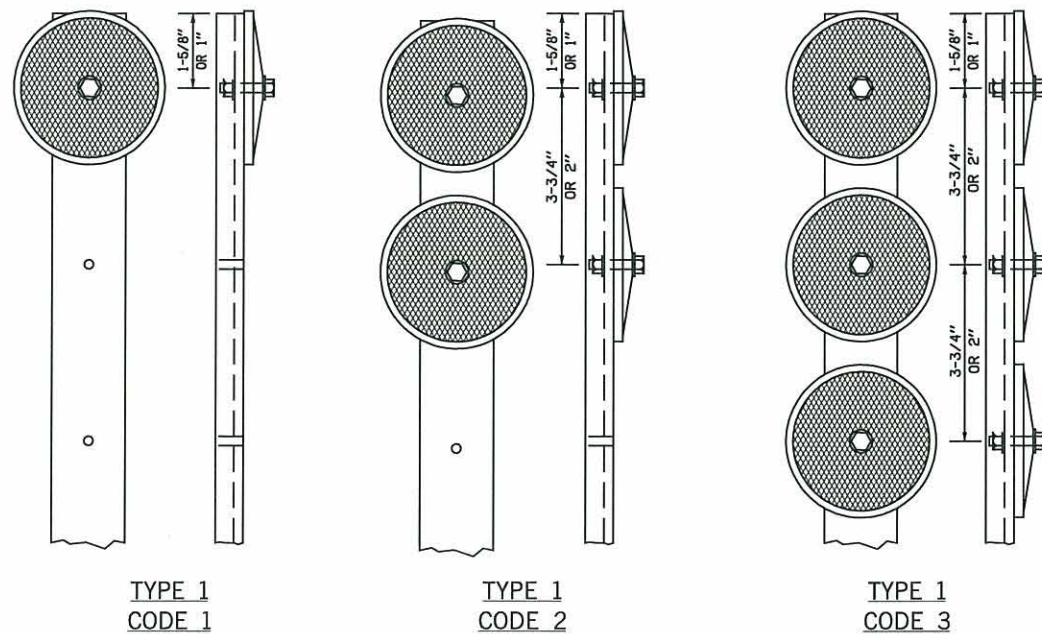


DESCRIPTION	REVISIONS	DATE

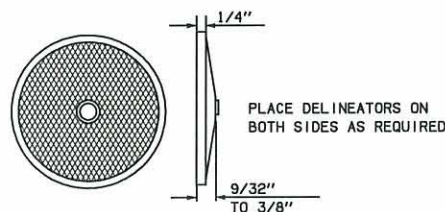
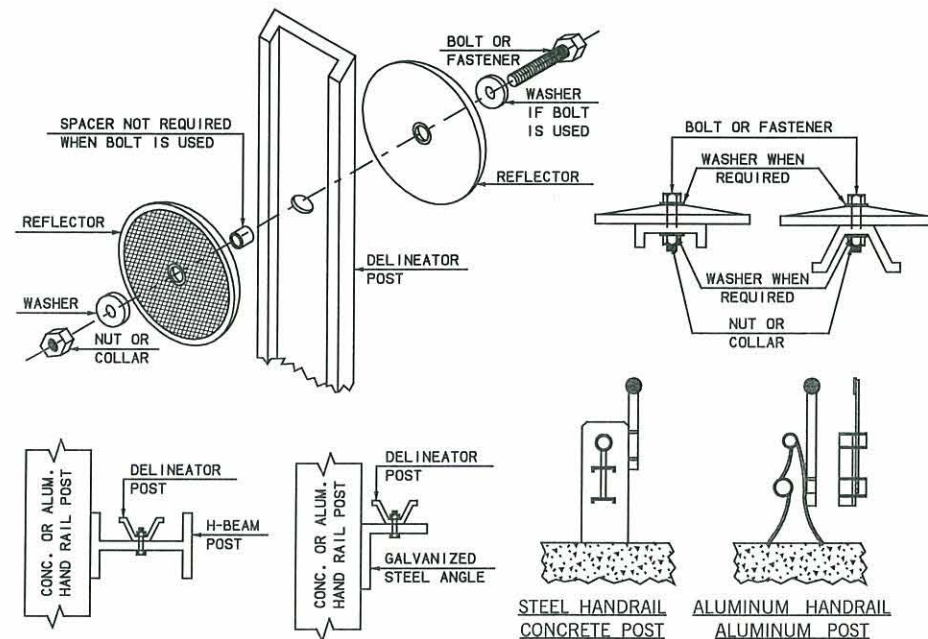


TYPE 2 DELINEATORS SHALL BE THE SAME AS SHOWN ABOVE EXCEPT THAT REFLECTORS ARE MOUNTED ON BOTH SIDES OF THE POST. COLOR OF THE REFLECTORS SHALL BE IN CONFORMANCE WITH THE MANUAL ON UNIFORM TRAFFIC CONTROL DEVICES, LATEST REVISION.

**MATERIALS SPECIFICATIONS**

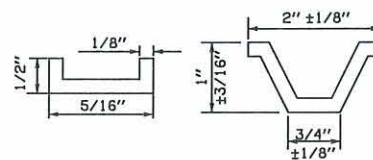
THE WEIGHT OF EACH POST BEFORE GALVANIZING & PUNCHING SHALL BE 1.12 lbs/ft. THE WEIGHT TOLERANCE SHALL BE  $\pm 3-1/2\%$ .

NOTE 1:  
FASTENING DEVICES MAY BE ALUMINUM BOLTS, NUTS, AND WASHERS OR ALUMINUM OR STEEL FASTENERS UTILIZING A SWEDGED COLLAR OR ALUMINUM OR STEEL BLIND OR PULL RIVETS OF THE SELF PLUGGING TYPE (PULL PIN, CLIPPED FLUSH, REMAINS IN RIVET WHEN FINISHED). ALL NUTS SHALL BE SELF LOCKING.



**CENTER MOUNT REFLECTOR**

NOTE 3:  
WHEN BOLTS AND NUTS ARE USED FOR DELINEATOR ASSEMBLIES, THE BOLT ENDS ARE TO BE SUFFICIENTLY DEFORMED TO RESIST VANDALISM. SEE NOTE 1 FOR FASTENING DEVICES.



**ALTERNATE POST SECTIONS**

THE CONTRACTOR MAY USE EITHER TYPE OF POST, BUT ONLY ONE TYPE SHALL BE USED THROUGHOUT THE PROJECT. THE CONTRACTOR SHALL FURNISH THE CORRECT SIZE FASTENING DEVICES AND NECESSARY SPACERS.

NOTE 2:  
FOR ATTACHING DELINEATOR POSTS TO GALVANIZED STEEL ANGLES, USE 5/16\"/>

BASIS OF PAYMENT		
ITEM NO.	ITEM	UNIT
853	DELINEATORS	EA



APPROVED BY TRAFFIC ENGINEER: *Chad Smith* DATE: *01/10*

TRAFFIC STANDARD

STANDARD DELINEATOR UNITS