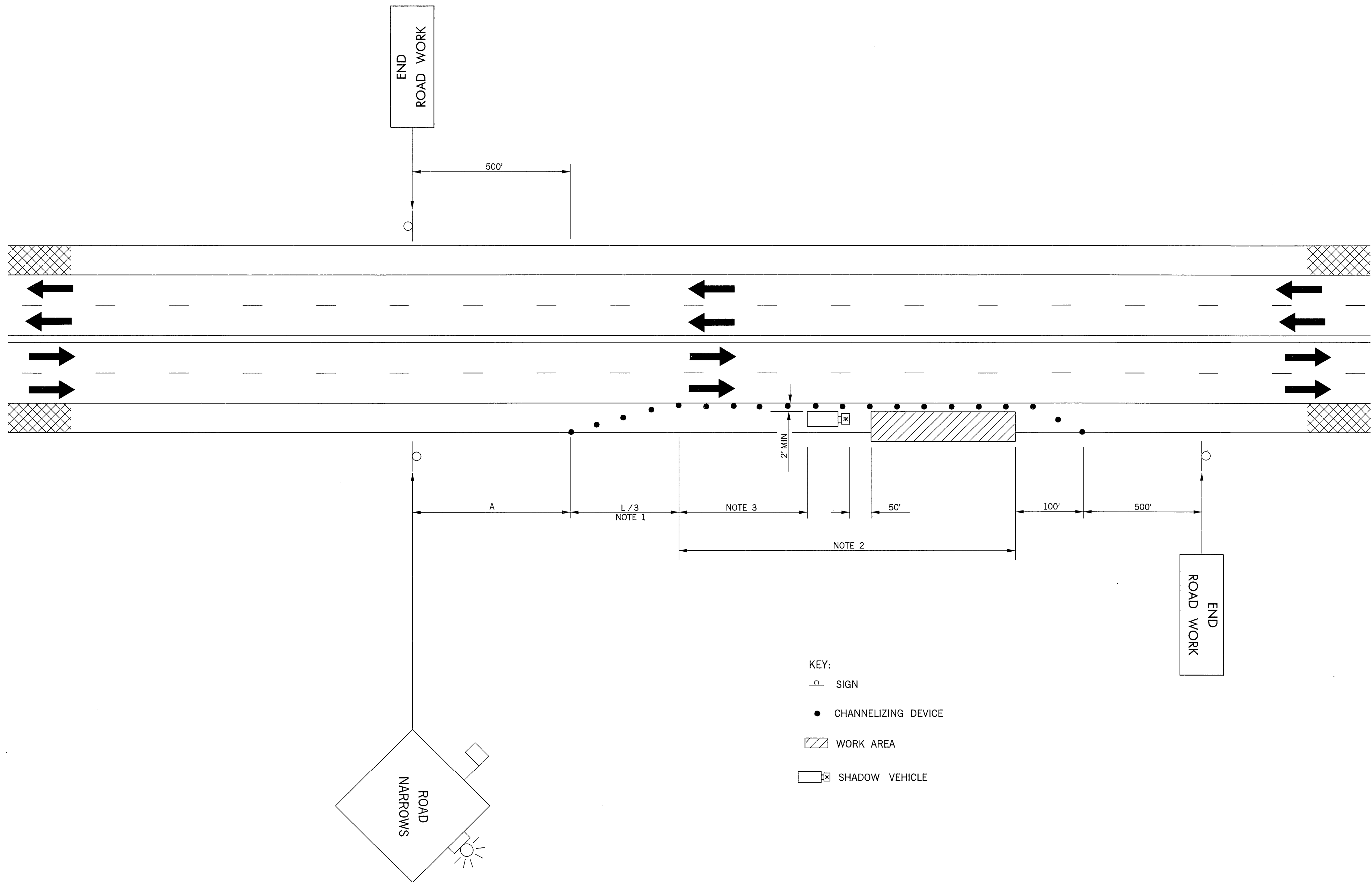


DESCRIPTION	REVISIONS	DATE



TYPICAL APPLICATION – MINOR ENCROACHMENT
ONTO TRAVEL LANE IN LOWER SPEED URBAN AREA

NOTE 1
A MINIMUM OF (5) FIVE CHANNELIZING DEVICES SHALL
BE PLACED THROUGH THIS TAPER.

NOTE 2
MAXIMUM SPACING BETWEEN CHANNELIZING DEVICES
(FEET) SHALL BE EQUAL TO THE POSTED SPEED LIMIT
(M.P.H.) WITH THE FOLLOWING EXCEPTIONS. SPACING
SHALL NOT EXCEED 25 FEET FOR CONES OR TUBE
CHANNELIZERS. SPACING SHALL NOT EXCEED 50 FEET
FOR TYPE II BARRICADES, VERTICAL PANELS OR DRUMS.

NOTE 3
A LONGITUDINAL BUFFER AREA, TO ALLOW WORKERS TIME
TO EVACUATE THE WORK AREA, SHOULD BE PROVIDED.
FOR GUIDELINES ON SETTING THE LENGTH OF THIS
BUFFER, SEE STANDARD DRAWING TCS2-1-(LATEST
REVISION). ACTUAL LENGTH SHALL BE DETERMINED BY
FIELD CONDITIONS AND THE JUDGEMENT OF THE ENGINEER.

NOTE 4
IF A MINIMUM LATERAL BUFFER OF 2'-0" CANNOT BE
MAINTAINED, THE OUTSIDE LANE SHALL BE CLOSED.

RECOMMENDED DISTANCE BETWEEN SIGNS (MIN.)			
ROAD TYPE	A (FT)	B (FT)	C (FT)
URBAN (LOW SPEED)	200	200	200
URBAN (HIGH SPEED)	350	350	350
RURAL	500	500	500
EXPRESSWAY /FREEWAY	1,000	1,600	2,600

APPROVED BY TRAFFIC ENGINEER *David Smith* DATE *10-1-99*

OKLAHOMA DEPT. OF TRANSPORTATION
TRAFFIC STANDARD (ENGLISH)
TRAFFIC CONTROL STANDARD
TYPICAL APPLICATION – MINOR ENCROACHMENT
ONTO TRAVEL LANE IN LOWER SPEED URBAN AREA

1999 SPECIFICATIONS	TCS81-1	00E
		T-581E