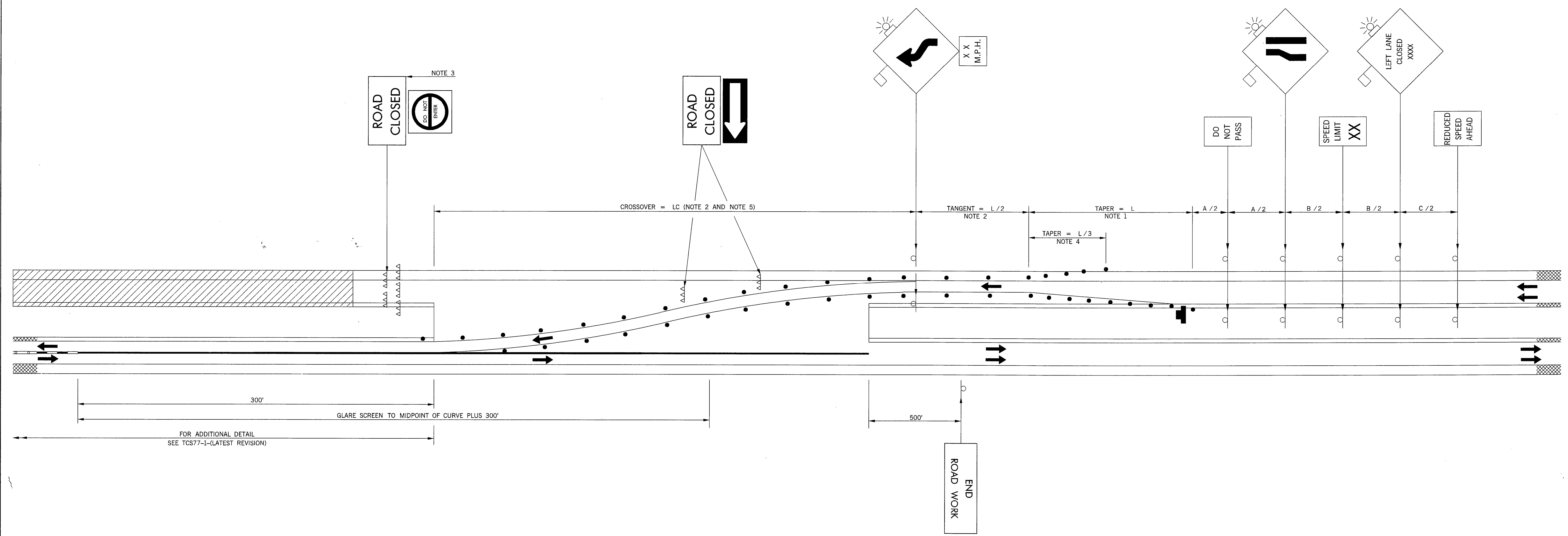


DESCRIPTION	REVISIONS	DATE
-------------	-----------	------



TYPICAL APPLICATION  
CROSS-OVER, WITH NO RAMP ACCESS

NOTE 1  
MAXIMUM SPACING BETWEEN CHANNELIZING DEVICES (FEET) SHALL BE EQUAL TO THE POSTED SPEED LIMIT (M.P.H.) WITH THE FOLLOWING EXCEPTIONS. SPACING SHALL NOT EXCEED 25 FEET FOR CONES OR TUBE CHANNELIZERS. SPACING SHALL NOT EXCEED 50 FEET FOR TYPE II BARRICADES, VERTICAL PANELS OR DRUMS.

NOTE 2  
MAXIMUM SPACING BETWEEN CHANNELIZING DEVICES (FEET) SHALL BE EQUAL TO TWICE THE POSTED SPEED LIMIT (M.P.H.) WITH THE FOLLOWING EXCEPTIONS. SPACING SHALL NOT EXCEED 50 FEET FOR CONES OR TUBE CHANNELIZERS. SPACING SHALL NOT EXCEED 100 FEET FOR TYPE II BARRICADES, VERTICAL PANELS OR DRUMS.

NOTE 3  
A SUFFICIENT NUMBER OF TYPE III BARRICADES, WITH SIGNS AS SHOWN, SHALL BE USED TO COMPLETELY CLOSE THE ROADWAY TO TRAFFIC FROM THE EDGE OF PAVEMENT TO THE EDGE OF PAVEMENT.

NOTE 4  
A MINIMUM OF FIVE (5) CHANNELIZING DEVICES SHALL BE PLACED THRU THIS TAPER.

NOTE 5  
FOR INFORMATION REGARDING THE LENGTH OF TAPERS, TANGENTS, AND CROSSOVERS, AS WELL AS THE SPACING OF CHANNELIZING DEVICES, SEE STANDARD DRAWING TCS2-1-(LATEST REVISION).

RECOMMENDED DISTANCE BETWEEN SIGNS (MIN.)			
ROAD TYPE	A (FT)	B (FT)	C (FT)
URBAN (LOW SPEED)	200	200	200
URBAN (HIGH SPEED)	350	350	350
RURAL	500	500	500
EXPRESSWAY /FREEWAY	1,000	1,600	2,600

- KEY:
- SIGN
  - CHANNELIZING DEVICE
  - WORK AREA
  - ARROW DISPLAY
  - G.R.E.A.T. IMPACT ATTENUATOR
  - PORTABLE CONCRETE MEDIAN BARRIER
  - TYPE III BARRICADES

APPROVED BY TRAFFIC ENGINEER *Husky Smith* DATE *10-1-99*

OKLAHOMA DEPT. OF TRANSPORTATION  
TRAFFIC STANDARD (ENGLISH)  
TRAFFIC CONTROL STANDARD  
TYPICAL APPLICATION  
CROSS-OVER, WITH NO RAMP ACCESS

1999 SPECIFICATIONS TCS78-1 00E  
T-578E