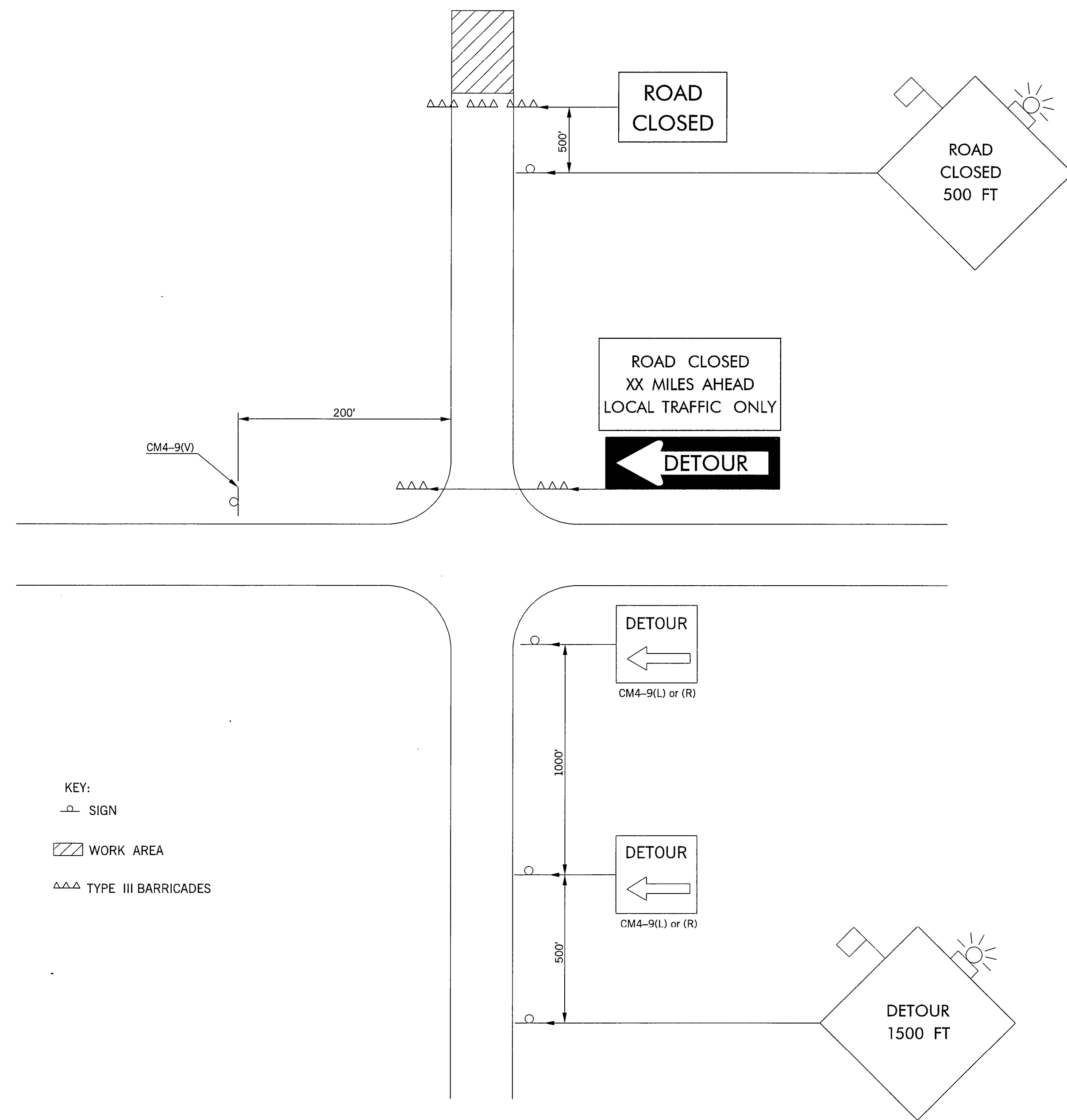
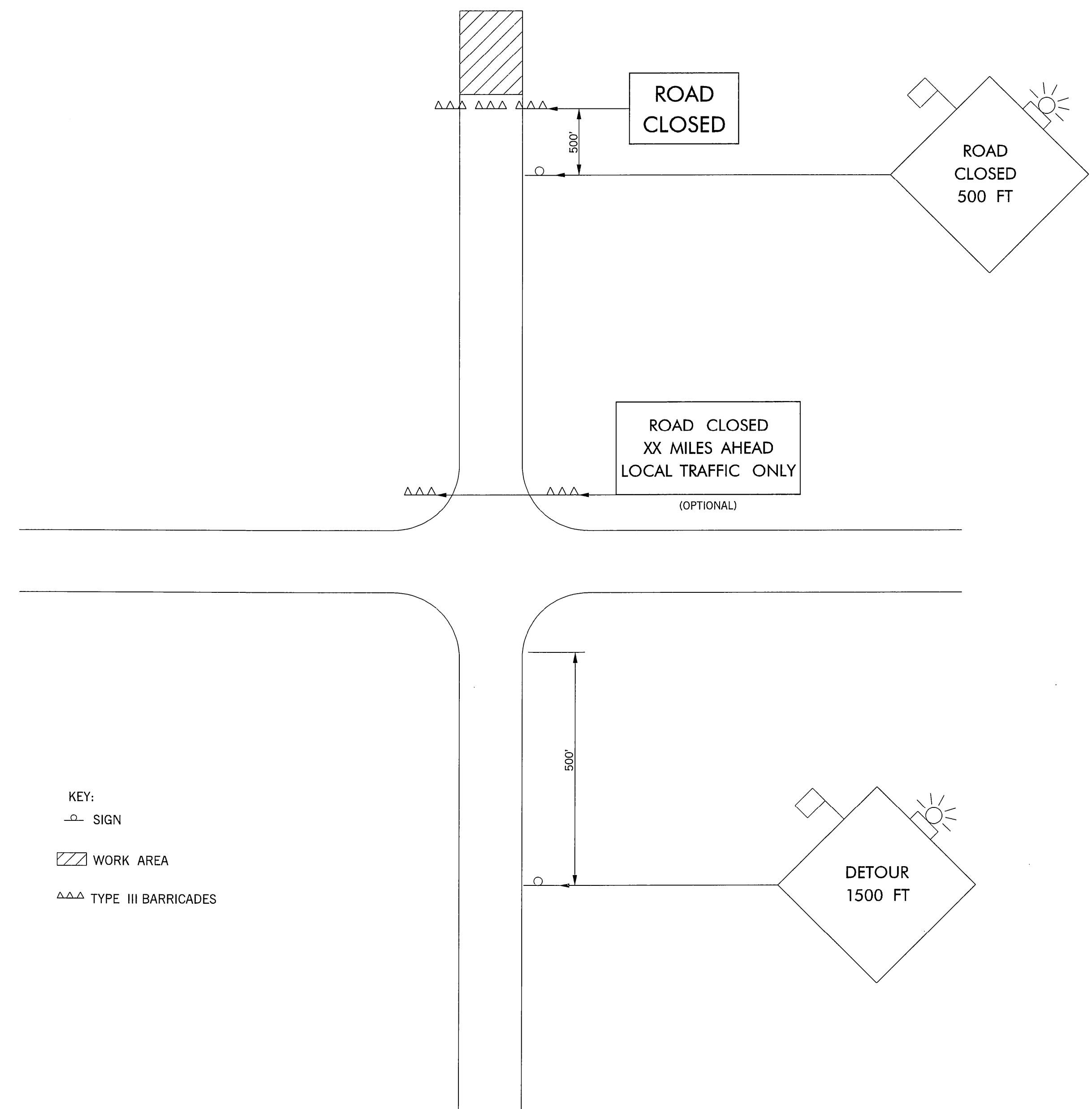


DESCRIPTION	REVISIONS	DATE



TYPICAL APPLICATION  
COUNTY ROAD (DETOUR IS ESTABLISHED)



TYPICAL APPLICATION  
COUNTY ROAD (NO DETOUR IS ESTABLISHED)

APPROVED BY TRAFFIC ENGINEER <i>Handwritten Signature</i>		DATE 10-1-99
OKLAHOMA DEPT. OF TRANSPORTATION TRAFFIC STANDARD (ENGLISH ) TRAFFIC CONTROL STANDARD TYPICAL APPLICATION COUNTY ROAD CLOSURES		
1999 SPECIFICATIONS	TCS48-1	00E T-548E