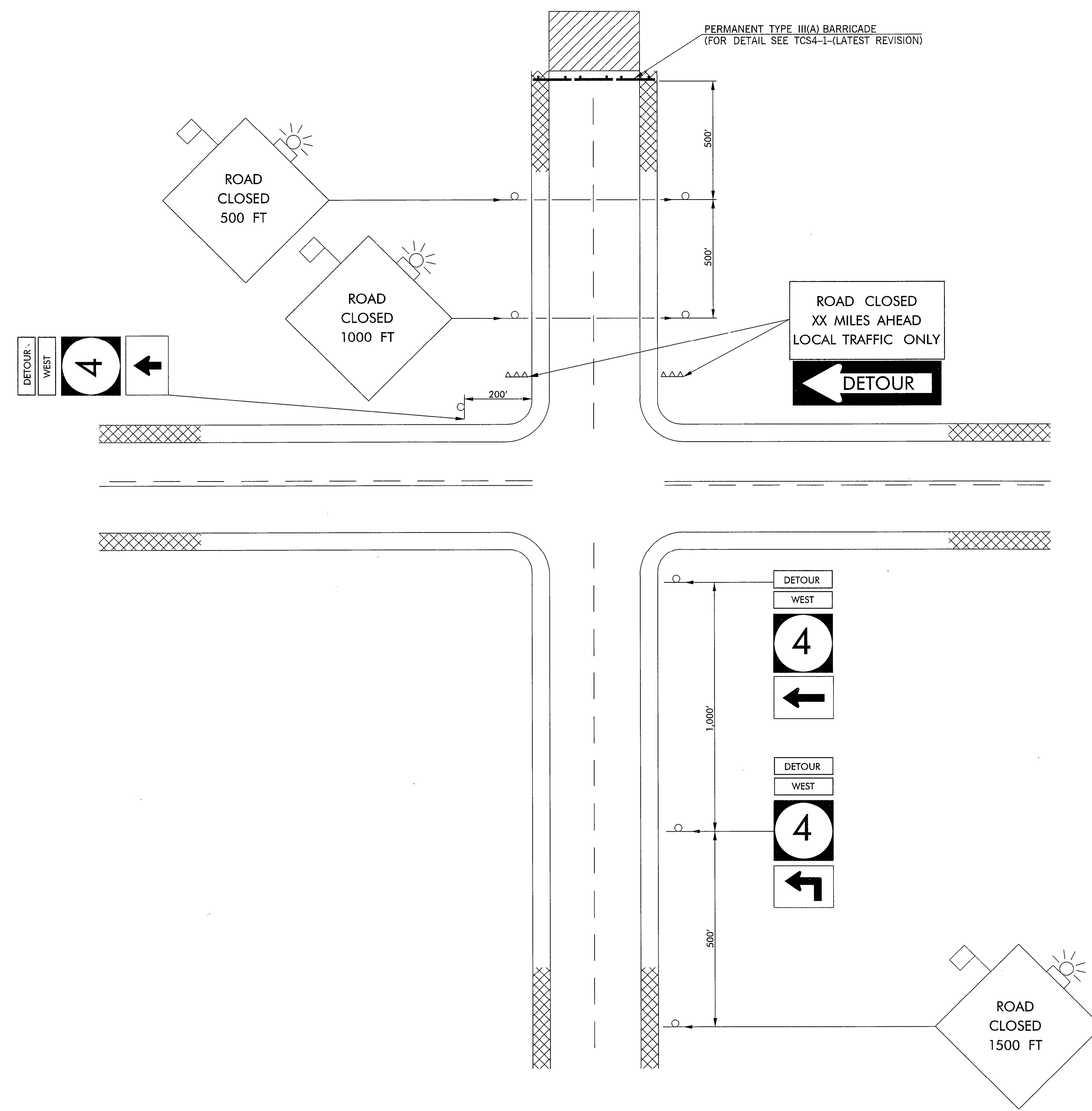


DESCRIPTION	REVISIONS	DATE



GENERAL NOTES  
 A SUFFICIENT NUMBER OF PERMANENT TYPE III(A) BARRICADES, WITH SIGNS AS SHOWN, SHALL BE USED TO COMPLETELY CLOSE THE ROADWAY TO TRAFFIC.  
 IN ORDER TO DETER TRAFFIC FROM CIRCUMVENTING THE CLOSURE, ADDITIONAL PERMANENT TYPE III (A) BARRICADES SHOULD BE ADDED TO EXTEND PAST THE EDGE OF PAVEMENT TO A DISTANCE DEEMED ADQUATE BY THE ENGINEER.

KEY:  
 ○ SIGN  
 ▨ WORK AREA  
 ▲▲▲ TYPE III BARRICADES

TYPICAL APPLICATION - ROADWAY CLOSED (PERMANENTLY) DETOUR ROUTE ESTABLISHED

APPROVED BY TRAFFIC ENGINEER <i>Husid Ahmad</i>	DATE <i>10-1-99</i>
OKLAHOMA DEPT. OF TRANSPORTATION TRAFFIC STANDARD ( ENGLISH ) TRAFFIC CONTROL STANDARD TYPICAL APPLICATION - ROADWAY CLOSED (PERMANENTLY) DETOUR ROUTE ESTABLISHED	
1999 SPECIFICATIONS	TCS46-1
	00E
	T-546E