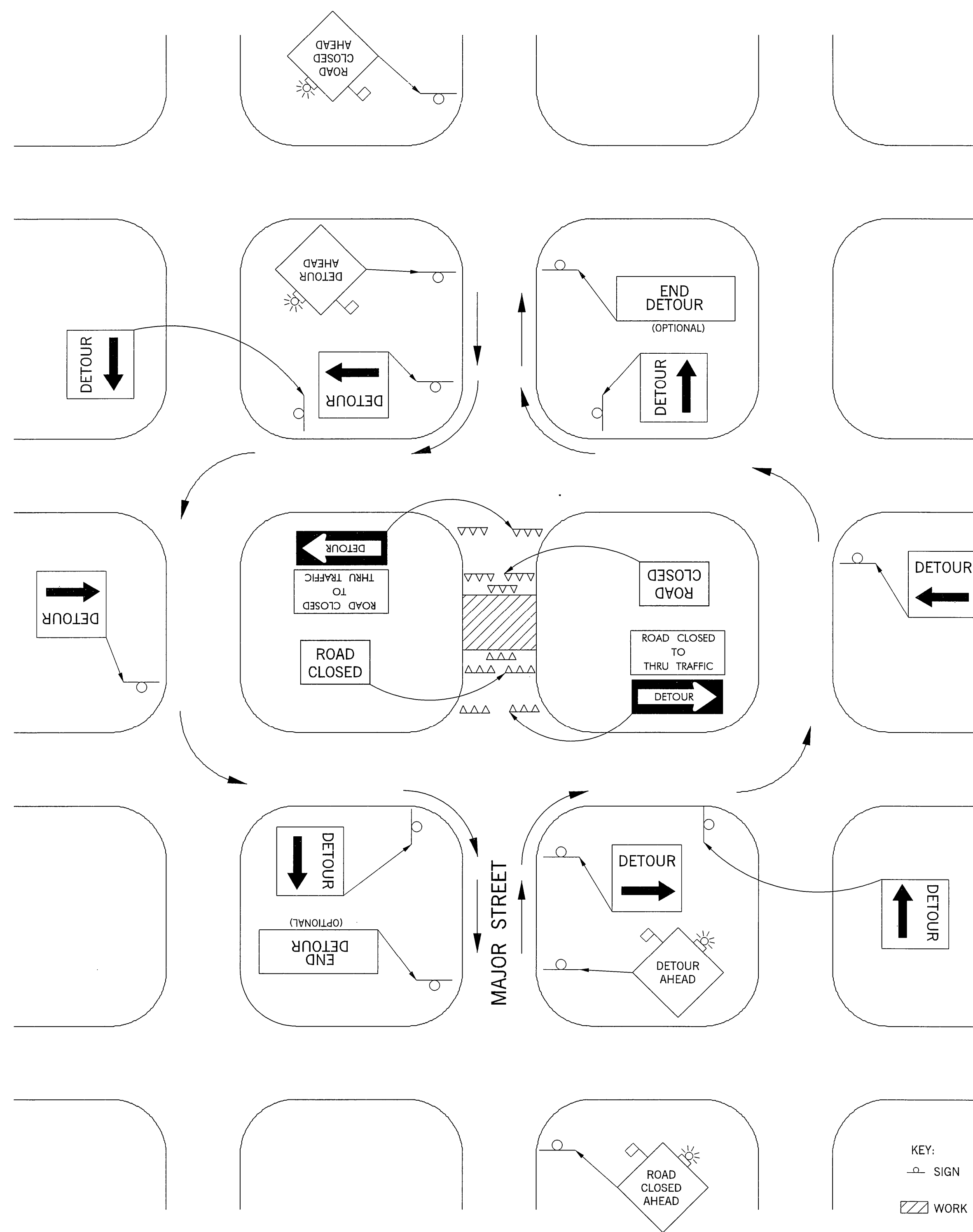


DESCRIPTION	REVISIONS	DATE



NOTES:  
WARNING LIGHTS SHOULD BE USED TO MARK  
BARRICADES AT NIGHT AS NEEDED.

STREET NAMES MAY BE USED WHEN DESIRABLE  
FOR DIRECTING DETOURING TRAFFIC.

# TYPICAL APPLICATION DETOUR FOR CLOSED STREET

APPROVED BY TRAFFIC ENGINEER <i>David J. Smith</i>	DATE 10-1-99
OKLAHOMA DEPT. OF TRANSPORTATION TRAFFIC STANDARD ( ENGLISH ) TRAFFIC CONTROL STANDARD TYPICAL APPLICATION DETOUR FOR CLOSED STREET	
1999 SPECIFICATIONS	TCS45-1
	00E
	T-545E