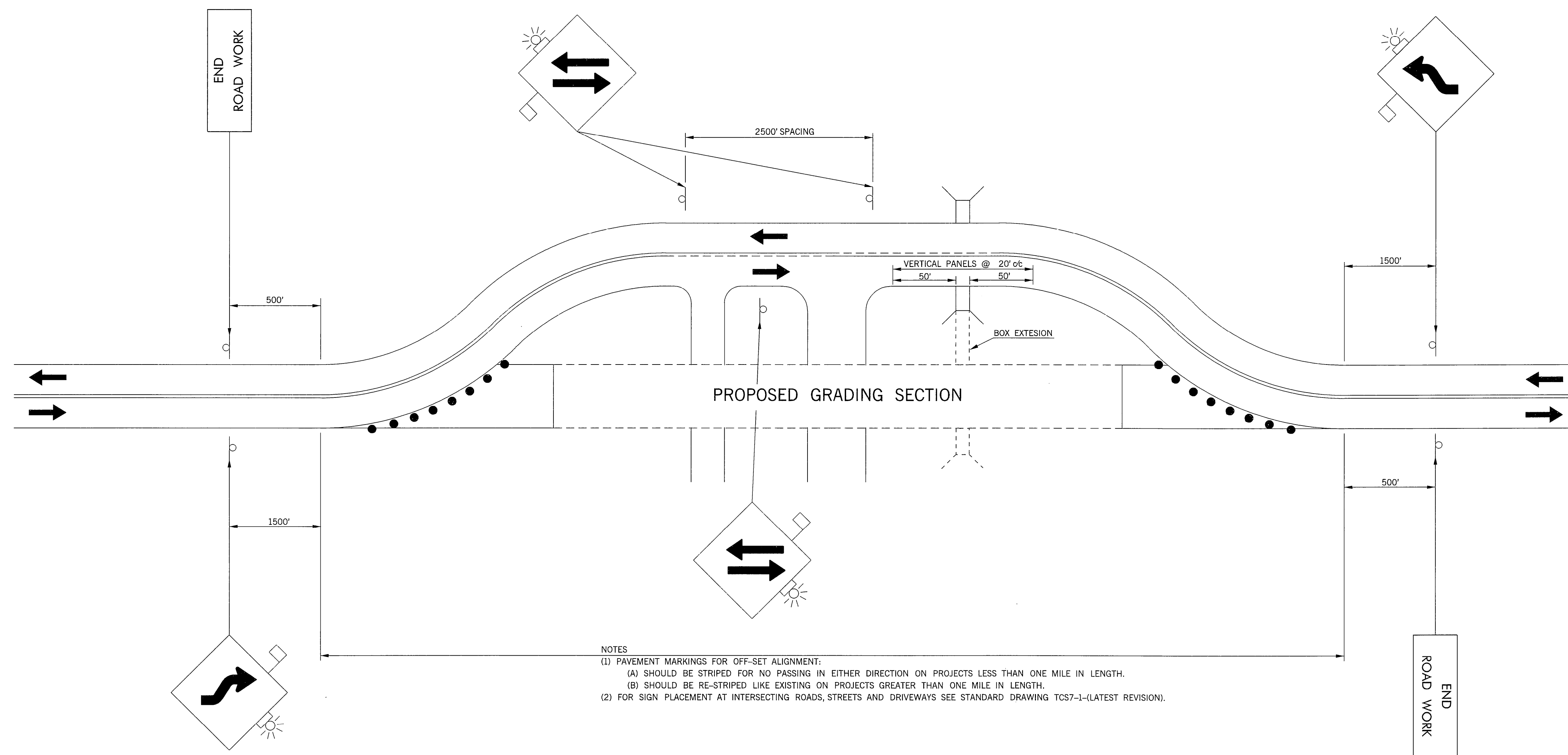
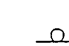



DESCRIPTION	REVISIONS	DATE



KEY:  
 SIGN  
 CHANNELIZING DEVICE

NOTES  
 (1) PAVEMENT MARKINGS FOR OFF-SET ALIGNMENT:  
 (A) SHOULD BE STRIPED FOR NO PASSING IN EITHER DIRECTION ON PROJECTS LESS THAN ONE MILE IN LENGTH.  
 (B) SHOULD BE RE-STRIPED LIKE EXISTING ON PROJECTS GREATER THAN ONE MILE IN LENGTH.  
 (2) FOR SIGN PLACEMENT AT INTERSECTING ROADS, STREETS AND DRIVEWAYS SEE STANDARD DRAWING TCS7-1-(LATEST REVISION).

TYPICAL APPLICATION  
 FOR OFF-SET ALIGNMENT

APPROVED BY TRAFFIC ENGINEER <i>H. J. Smith</i>	DATE 10-1-99
OKLAHOMA DEPT. OF TRANSPORTATION TRAFFIC STANDARD ( ENGLISH ) TRAFFIC CONTROL STANDARD TYPICAL APPLICATION FOR OFFSET ALIGNMENT	
1999 SPECIFICATIONS	TCS44-1
	00E
	T-544E