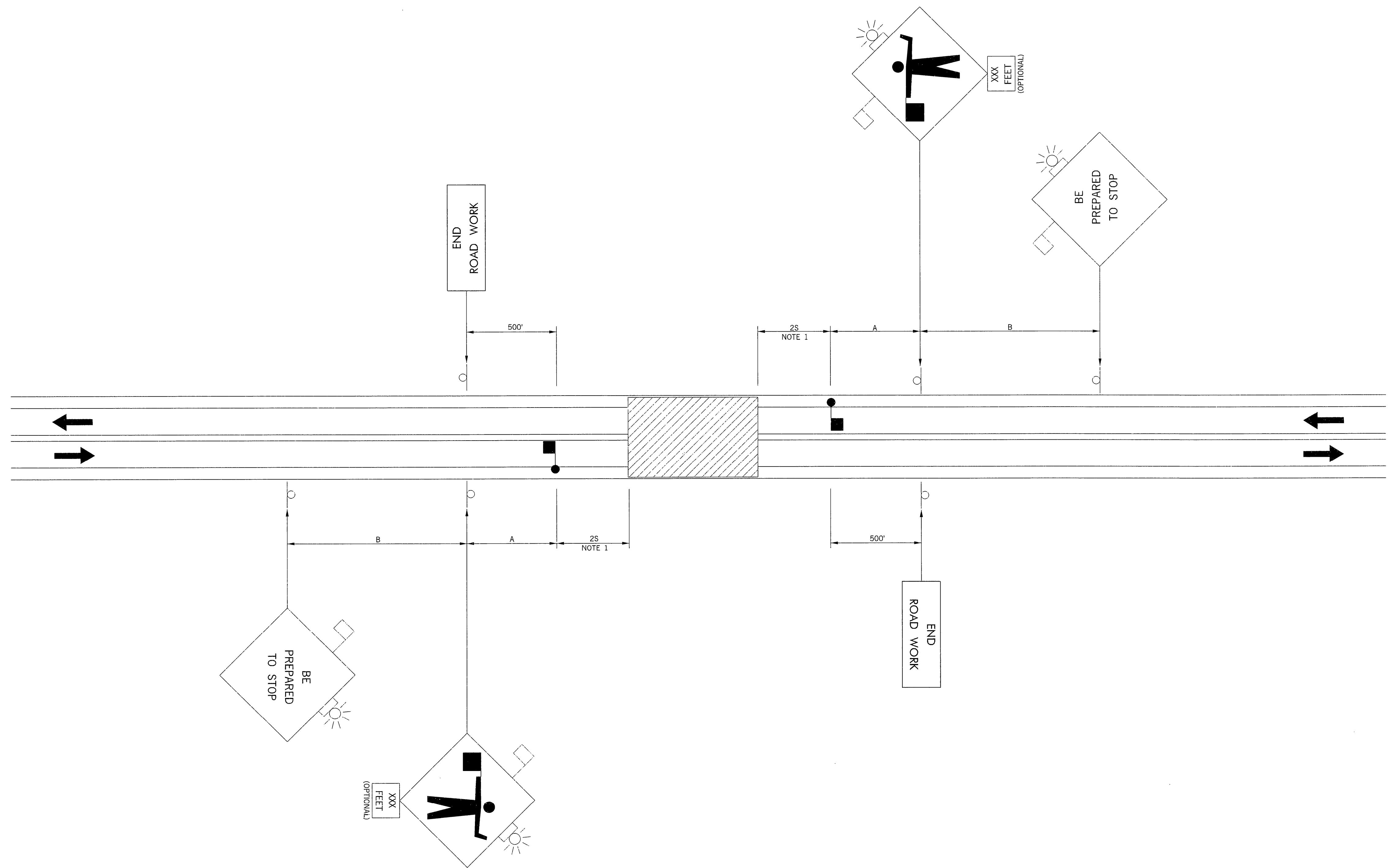


DESCRIPTION	REVISIONS	DATE



NOTE 1  
DISTANCE 2S IS EQUAL TO TWICE THE POSTED SPEED  
LIMIT IN FEET.

RECOMMENDED DISTANCE BETWEEN SIGNS (MIN.)			
ROAD TYPE	A (FT)	B (FT)	C (FT)
URBAN (LOW SPEED)	200	200	200
URBAN (HIGH SPEED)	350	350	350
RURAL	500	500	500
EXPRESSWAY /FREEWAY	1,000	1,600	2,600

CONDITIONS REPRESENTED ARE FOR WORK THAT REQUIRES  
CLOSINGS DURING DAYTIME HOURS ONLY.

THIS APPLICATION IS INTENDED FOR A PLANNED TEMPORARY  
CLOSING NOT TO EXCEED 15-20 MINUTES.

FLAGGERS SHALL STOP THE FIRST VEHICLE FROM THE  
POSITION SHOWN, THEN MOVE TO THE CENTERLINE TO  
STOP APPROACHING TRAFFIC.

- KEY:
- SIGN
  - WORK AREA
  - S = POSTED SPEED LIMIT
  - FLAGGER

TYPICAL APPLICATION  
BOTH LANES CLOSED AND FLAGGING IS PROVIDED

APPROVED BY TRAFFIC ENGINEER <i>David Smith</i>	DATE <i>10.1.99</i>
OKLAHOMA DEPT. OF TRANSPORTATION TRAFFIC STANDARD (ENGLISH) TRAFFIC CONTROL STANDARD TYPICAL APPLICATION BOTH LANES CLOSED AND FLAGGING IS PROVIDED	
1999 SPECIFICATIONS	TCS42-1 00E T-542E