

DESCRIPTION	REVISIONS	DATE

NOTE 1
MAXIMUM SPACING OF CHANNELIZING DEVICES SHALL BE AS FOLLOWS:
(A) FIRST 250 FEET OF ACTIVITY AREA.
(1) 25 FEET FOR CONES AND TUBE CHANNELIZERS.
(2) 50 FEET FOR TYPE II BARRICADES, VERTICAL PANELS OR DRUMS.
(B) REMAINDER OF ACTIVITY AREA.
(1) 50 FEET FOR CONES AND TUBE CHANNELIZERS.
(2) 100 FEET FOR TYPE II BARRICADES, VERTICAL PANELS OR DRUMS.




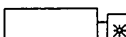

NOTE 2
A MINIMUM OF FIVE (5) CHANNELIZING DEVICES SHALL BE PLACED THROUGH THIS AREA. ADDITIONAL DRUMS MAY BE USED TO CLOSE THE SHOULDER WITH THE APPROVAL OF THE ENGINEER.

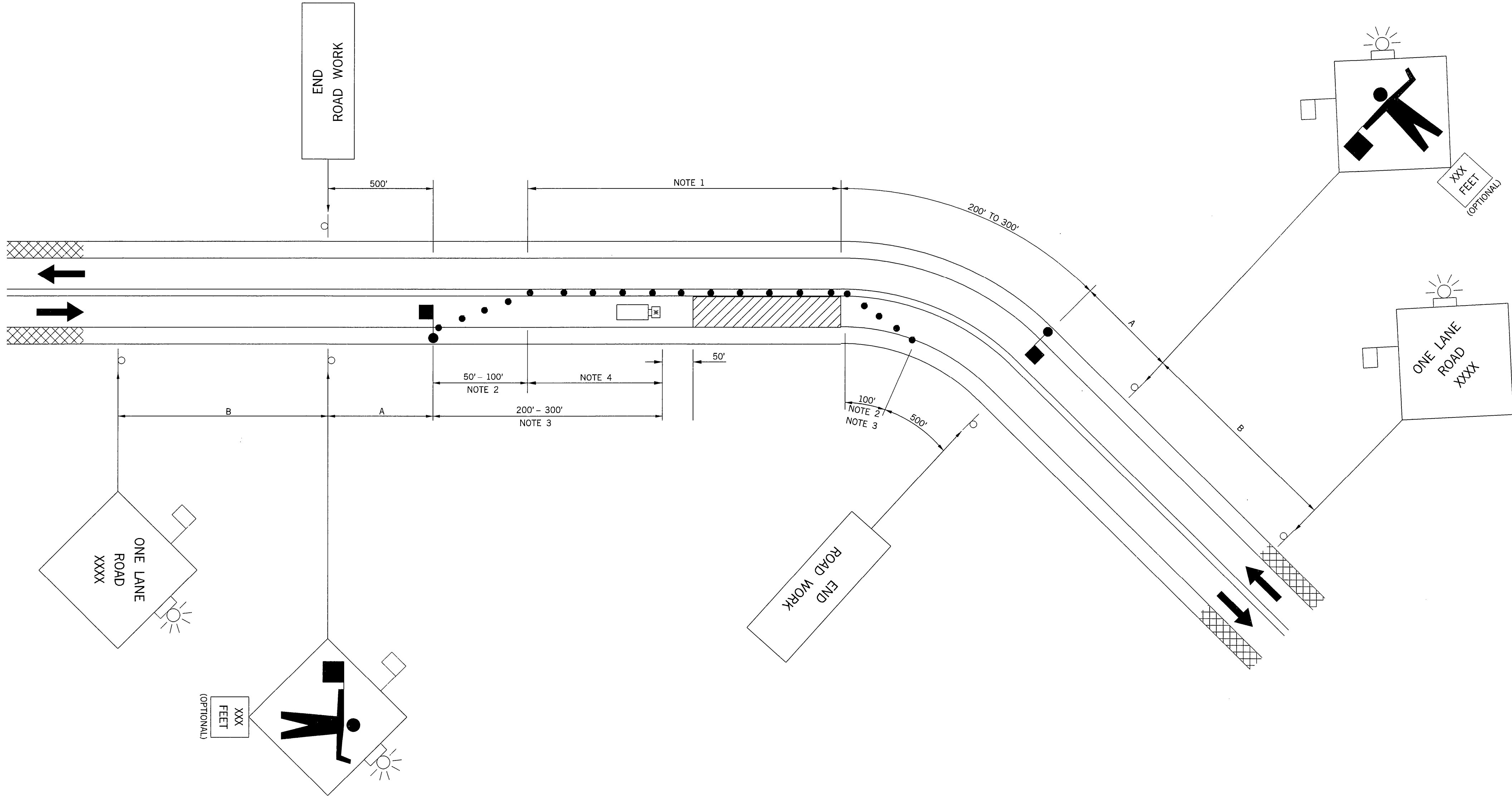
NOTE 3
SHOULD THE SIGHT DISTANCE BE RESTRICTED DUE TO VERTICAL OR HORIZONTAL ALIGNMENT OR OTHER CAUSES, CHANNELIZING DEVICES ARE TO BE EXTENDED TO A POINT WHERE THEY ARE VISIBLE TO APPROACHING TRAFFIC.

NOTE 4
A LONGITUDINAL BUFFER AREA, TO ALLOW WORKERS TIME TO EVACUATE THE WORK AREA, SHOULD BE PROVIDED. FOR GUIDELINES ON SETTING THE LENGTH OF THIS BUFFER, SEE STANDARD DRAWING TCS2-1-(LATEST REVISION). ACTUAL LENGTH SHALL BE DETERMINED BY FIELD CONDITIONS AND THE JUDGEMENT OF THE ENGINEER.

RECOMMENDED DISTANCE BETWEEN SIGNS (MIN.)			
ROAD TYPE	A (FT)	B (FT)	C (FT)
URBAN (LOW SPEED)	200	200	200
URBAN (HIGH SPEED)	350	350	350
RURAL	500	500	500
EXPRESSWAY /FREEWAY	1,000	1,600	2,600

THE SHADOW VEHICLE SHOWN AT THE BEGINNING OF THE WORK AREA SHALL BE IN PLACE WHENEVER WORKERS ARE IN THE WORK AREA. THIS VEHICLE SHALL BE REMOVED FROM THE ROADWAY WHENEVER WORKERS ARE NOT IN THE WORK AREA. THE VEHICLE SHALL BE EQUIPPED WITH AN ACTUATED FLASHING OR REVOLVING YELLOW LIGHT.

- KEY:
-  SIGN
 -  CHANNELIZING DEVICE
 -  WORK AREA
 -  SHADOW VEHICLE
 -  FLAGGER



TYPICAL APPLICATION – DAYTIME MAINTENANCE
OPERATION WHERE FLAGGING IS PROVIDED

APPROVED BY TRAFFIC ENGINEER <i>Handwritten Signature</i>	DATE <i>10-1-99</i>
OKLAHOMA DEPT. OF TRANSPORTATION TRAFFIC STANDARD (ENGLISH) TRAFFIC CONTROL STANDARD TYPICAL APPLICATION – DAYTIME MAINTENANCE OPERATION WHERE FLAGGING IS PROVIDED	
1999 SPECIFICATIONS	TCS36-1 00E T-536E