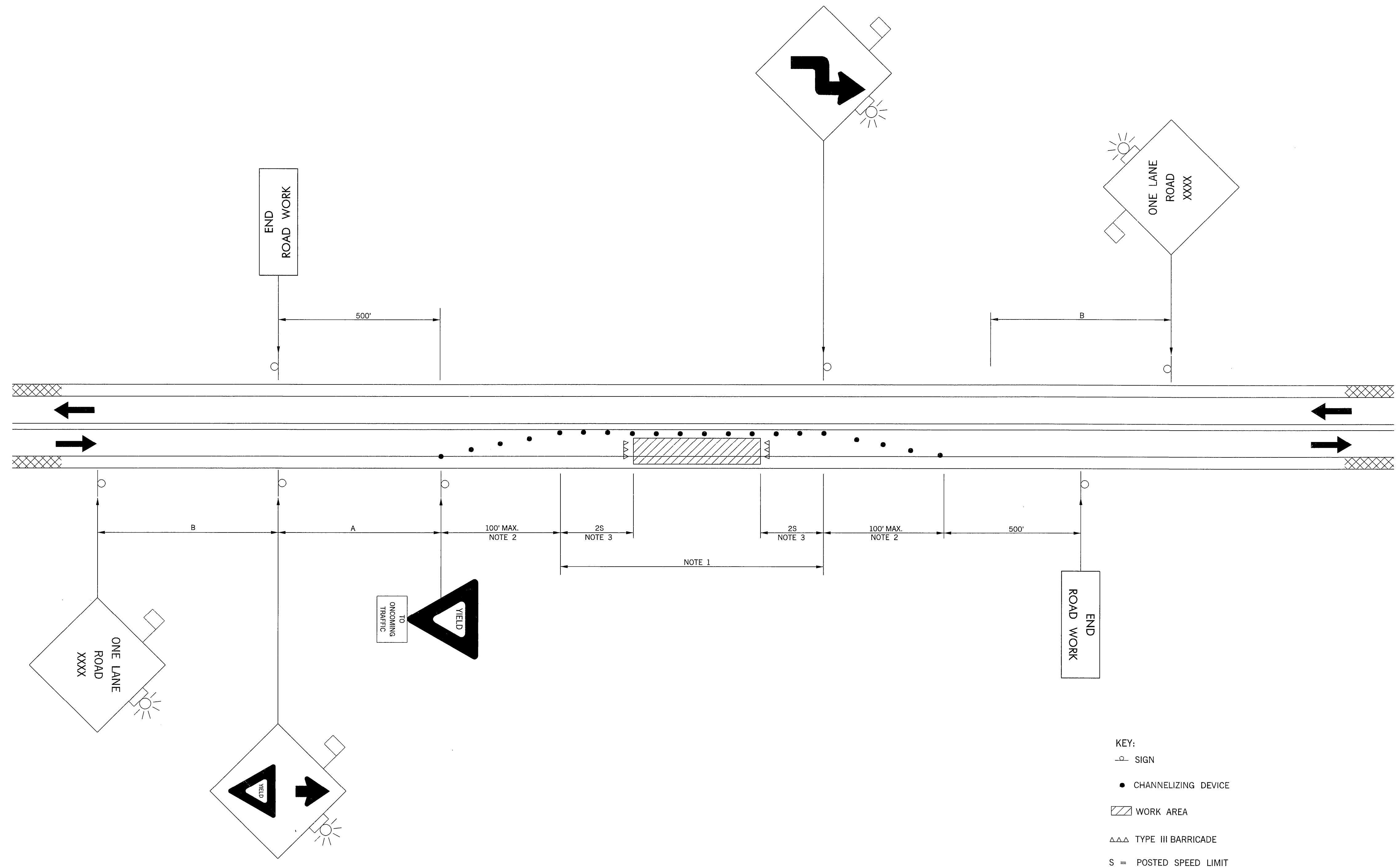


DESCRIPTION	REVISIONS	DATE



NOTE 1
MAXIMUM SPACING BETWEEN CHANNELIZING DEVICES (FEET) SHALL BE EQUAL TO THE POSTED SPEED LIMIT (M.P.H.) WITH THE FOLLOWING EXCEPTIONS. SPACING SHALL NOT EXCEED 25 FEET FOR CONES OR TUBE CHANNELIZERS. SPACING SHALL NOT EXCEED 50 FEET FOR TYPE II BARRICADES, VERTICAL PANELS OR DRUMS.

NOTE 2
A MINIMUM OF FIVE (5) CHANNELIZING DEVICES SHALL BE PLACED THRU THIS AREA. ADDITIONAL DRUMS MAY BE USED TO CLOSE THE SHOULDER WITH THE APPROVAL OF THE ENGINEER.

NOTE 3
DISTANCE 2S IS EQUAL TO TWICE THE POSTED SPEED LIMIT IN FEET.

RECOMMENDED DISTANCE BETWEEN SIGNS (MIN.)			
ROAD TYPE	A (FT)	B (FT)	C (FT)
URBAN (LOW SPEED)	200	200	200
URBAN (HIGH SPEED)	350	350	350
RURAL	500	500	500
EXPRESSWAY /FREEWAY	1,000	1,600	2,600

THIS TEMPORARY TRAFFIC CONTROL ZONE APPLICATION MAY BE USED AS AN ALTERNATE TRAFFIC CONTROL PLAN TO A STANDARD LANE CLOSURE WITH FLAGGERS WHEN THE FOLLOWING CONDITIONS EXIST AND WITH APPROVAL OF THE ENGINEER.

- (A) TRAFFIC VOLUME IS SUCH THAT SUFFICIENT GAPS EXIST FOR TRAFFIC THAT MUST YIELD.
- (B) DRIVERS FROM BOTH DIRECTIONS MUST BE ABLE TO SEE APPROACHING TRAFFIC THROUGH AND BEYOND THE WORK AREA.

TYPICAL APPLICATION
LANE CLOSURE ON LOW-VOLUME ROADWAY

APPROVED BY TRAFFIC ENGINEER <i>Hudd Smith</i>	DATE <i>10-1-99</i>
OKLAHOMA DEPT. OF TRANSPORTATION TRAFFIC STANDARD (ENGLISH) TRAFFIC CONTROL STANDARD TYPICAL APPLICATION LANE CLOSURE ON LOW-VOLUME ROADWAY	
1999 SPECIFICATIONS	<div>TCS34-1</div> <div>OOE</div> <div>T-534E</div>