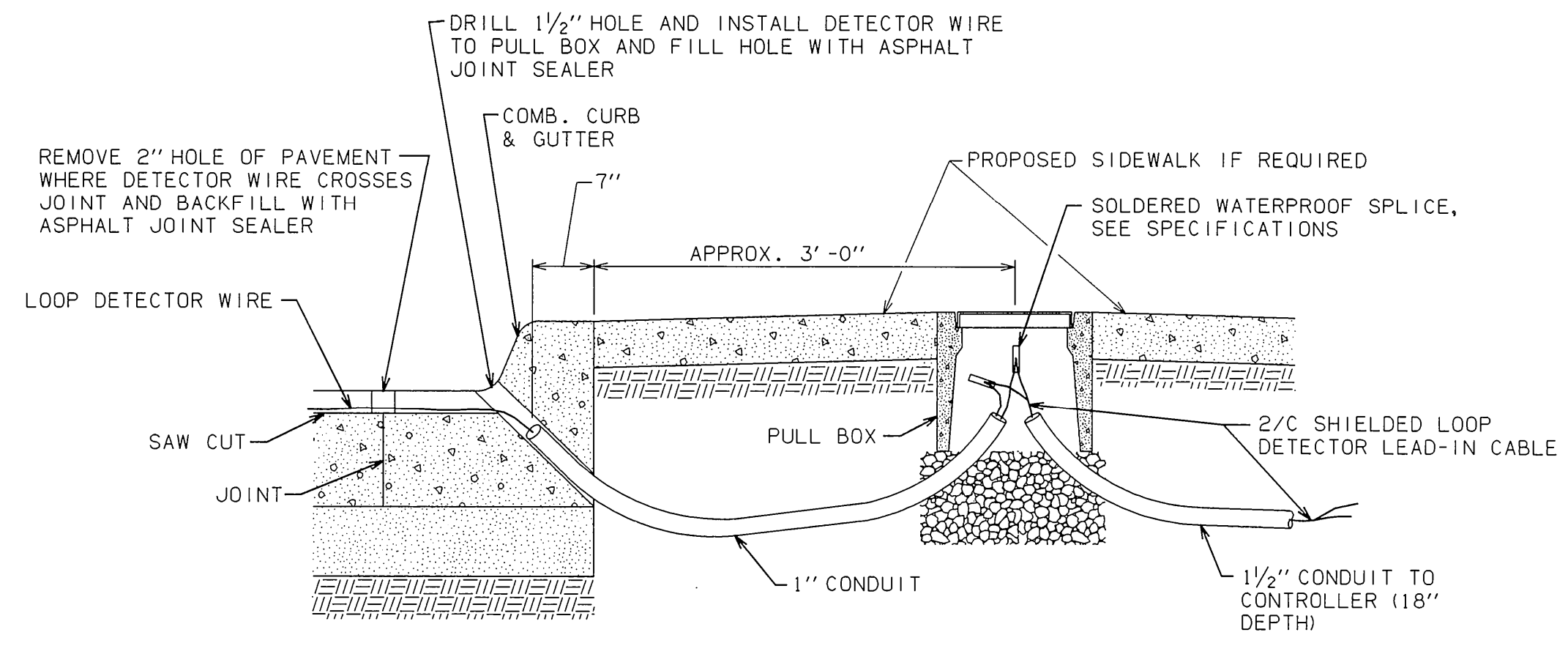
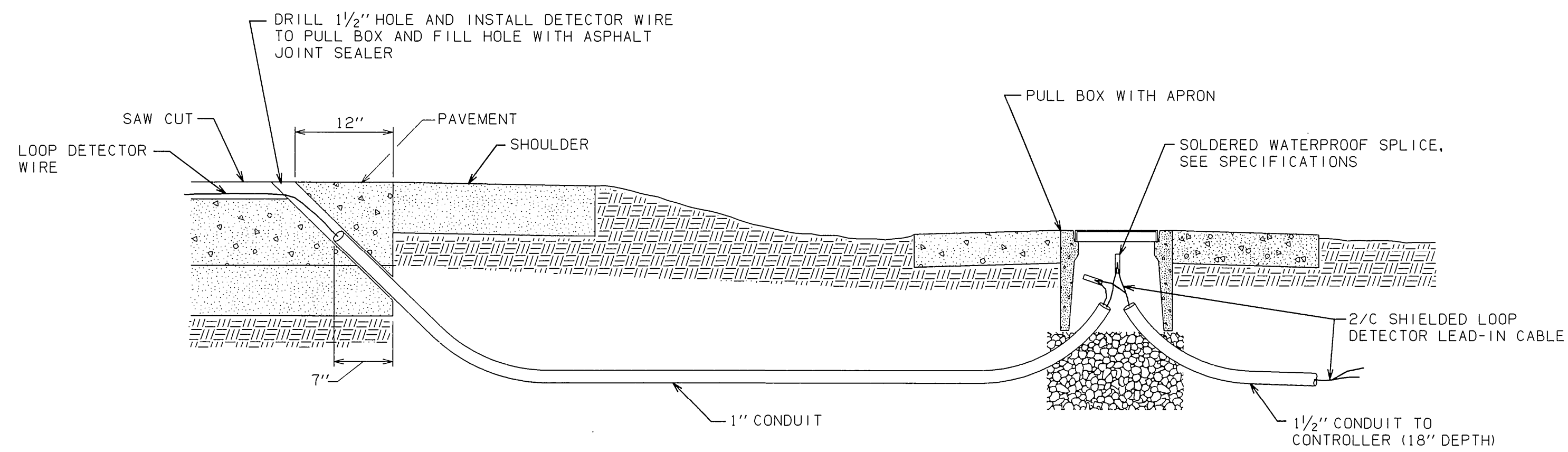


MICROLOOP INSTALLATION DETAIL

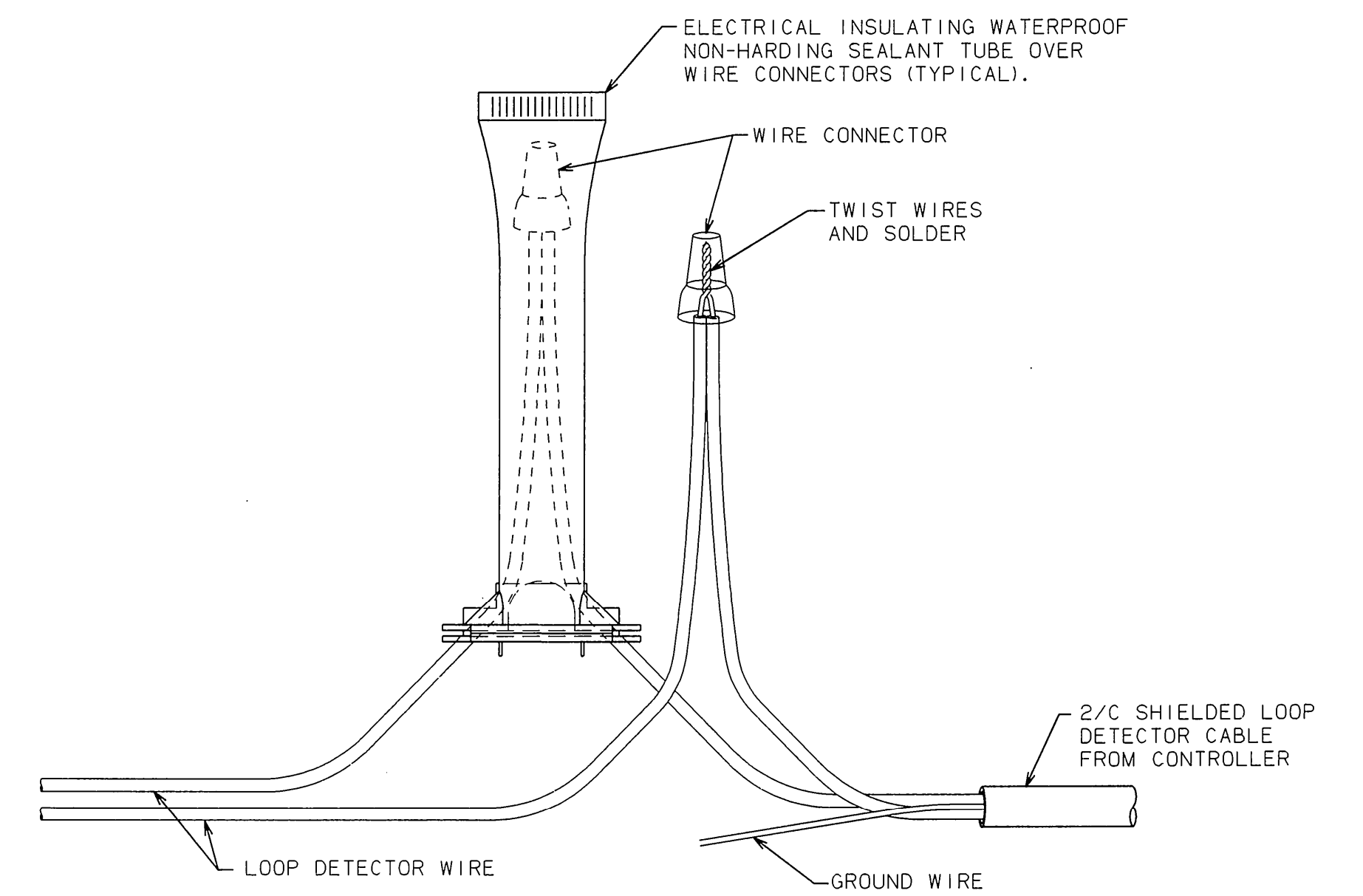


SECTION VIEW OF DETECTOR WIRE THROUGH EXISTING CURB TO PULL BOX

GENERAL NOTES
 1. EACH SPLICE SHALL HAVE ITS OWN INDIVIDUAL ELECTRICAL INSULATING TUBE OR RESIN PACKAGE.



SECTION VIEW OF DETECTOR WIRE THROUGH PAVEMENT TO PULL BOX



LOOP DETECTOR WIRE CONNECTION DETAIL

APPROVED BY TRAFFIC ENGINEER <i>David J. Smith</i>	DATE 10-1-89
OKLAHOMA DEPT. OF TRANSPORTATION TRAFFIC STANDARD (ENGLISH)	
INSTALLATION OF DETECTORS	
1999 SPECIFICATIONS	ID2-1 OOE T-412E