

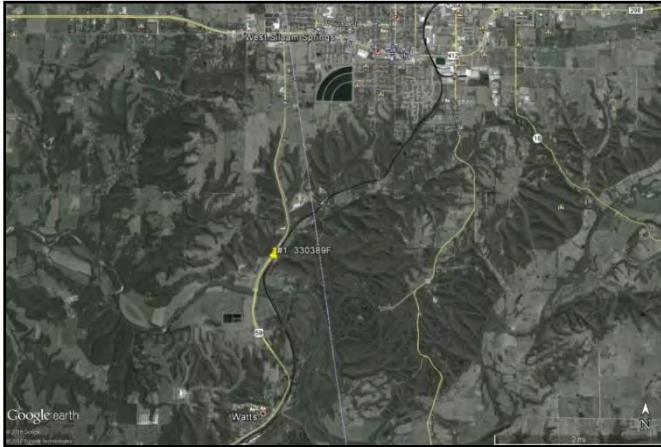


APPENDIX A: Crossing Summaries



ODOT 2016 TIGER Grant Application

Crossing #1 DOT 330389F



Project Location

County: Adair
City: Near Watts

Tribal Jurisdiction: Cherokee
Tribal Facilities within 5 miles: NA

Roadway: Twin Falls Road
On State Highway: No
Lanes: 2
AADT: 160
Speed Limit: 50 mph
Surface: Asphalt
Sidewalks: No
School Bus Route: No

Railroad: KCS
Total Tracks: 1
Total Trains: 22
Max Train Speed: 40 mph
Signal Status: Crossbucks
Crossing Surface: Timber

Safety

Accidents in last 5 years: 0

Community Access: US-59

Benefits

Discounted (7%): \$1,130,774

Undiscounted: \$2,352,514



Proposed Improvements

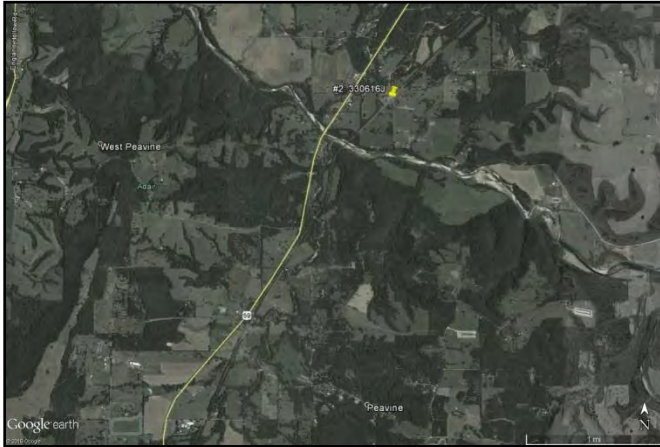
Signal: Replace with Flashing Lights and Half Roadway Gates
Surface: New Timber Crossing & Resurface Track Approaches
Additional: Pavement Markings and Signs

Cost: \$300,000

Needed Improvements: Safety and Quality of Life

ODOT 2016 TIGER Grant Application

Crossing #2 DOT 330616J



Project Location

County: Adair
City: Near Westville

Tribal Jurisdiction: Cherokee
Tribal Facilities within 5 miles: NA

Roadway: E0755
On State Highway: No
Lanes: 2
AADT: 150
Speed Limit: 50 mph
Surface: Asphalt
Sidewalks: No
School Bus Route: No

Railroad: KCS
Total Tracks: 2
Total Trains: 22
Max Train Speed: 40 mph
Signal Status: Crossbucks
Crossing Surface: Asphalt/Timber

Safety

Accidents within last 5 years: 0

Community Access: US-59

Benefits

Discounted (7%): \$1,121,346
Undiscounted: \$2,332,900



Proposed Improvements

Signal: Replace with Flashing Lights and Half Roadway Gates
Surface: Replace with Timber Crossing & Resurface Track Approaches
Additional: Pavement Markings and Signs & Remove abandoned crossing

Cost: \$300,000

Needed Improvements: Safety and Quality of Life

ODOT 2016 TIGER Grant Application

Crossing #3 DOT 330619E



Project Location

County: Adair
City: Near Stilwell

Tribal Jurisdiction: Cherokee

Tribal Facilities within 5 miles: Cherokee Nation Industries, Stilwell Indian United Methodist Church, Fairfield Indian Baptist Church, Maryetta Head Start (Cherokee Nation)

Roadway: E0772

On State Highway: No
Lanes: 2
AADT: 250
Speed Limit: 50 mph
Surface: Asphalt
Sidewalks: No
School Bus Route: No

Railroad: KCS

Total Tracks: 1
Total Trains: 22
Max Train Speed: 40 mph
Signal Status: Crossbucks
Crossing Surface: Asphalt/Timber

Safety

Accidents within last 5 years: 0

Community Access: US-59

Benefits

Discounted (7%): \$1,266,377
Undiscounted: \$2,634,628



Proposed Improvements

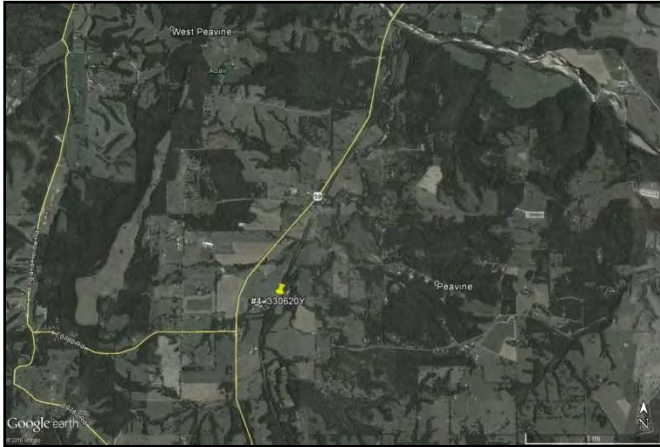
Signal: Replace with Flashing Lights and Half Roadway Gates
Surface: Replace with Timber Crossing & Resurface Track Approaches
Additional: Pavement Markings and Signs

Cost: \$300,000

Needed Improvements: Safety and Quality of Life

ODOT 2016 TIGER Grant Application

Crossing #4 DOT 330620Y



Project Location

County: Adair
City: Near Stilwell

Tribal Jurisdiction: Cherokee

Tribal Facilities within 5 miles: Cherokee Nation Industries, Stilwell Indian United Methodist Church, Fairfield Indian Baptist Church, Maryetta Head Start (Cherokee Nation)

Roadway: E0778

On State Highway: No
Lanes: 2
AADT: 200
Speed Limit: 50 mph
Surface: Asphalt
Sidewalks: No
School Bus Route: No

Railroad: KCS

Total Tracks: 1
Total Trains: 22
Max Train Speed: 40 mph
Signal Status: Crossbucks
Crossing Surface: Asphalt/Timber

Safety

Accidents within last 5 years: 1

Community Access: US-59

Benefits

Discounted (7%): \$2,183,047
Undiscounted: \$4,541,710



Proposed Improvements

Signal: Replace with Flashing Lights and Half Roadway Gates
Surface: Replace with Timber Crossing & Resurface Track Approaches
Additional: Pavement Markings and Signs

Cost: \$300,000

Needed Improvements: Safety and Quality of Life

ODOT 2016 TIGER Grant Application

Crossing #5 DOT 008485A



Project Location

County: Washington
City: Bartlesville

Tribal Jurisdiction: Cherokee and Delaware Tribes
Tribal Facilities within 5 miles: Cherokee Nation Health Clinic, Cherokee Nation Employment, Delaware Tribe HQ, Delaware Child Development Center, Cherokee Nation Housing Authority

Roadway: SW Frank Phillips Avenue
On State Highway: Yes
Lanes: 4
AADT: 12000
Speed Limit: 30 mph
Surface: Asphalt
Sidewalks: Yes
School Bus Route: Yes

Railroad: SKOL
Total Tracks: 1
Total Trains: 7
Max Train Speed: 40 mph
Signal Status: Pedestal Flashing Lights
Crossing Surface: Timber

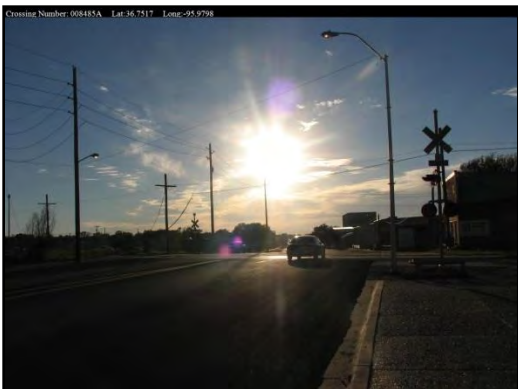
Safety

Accidents in last 5 years: 0

Community Access: Downtown Bartlesville

Benefits

Discounted (7%): \$1,669,050
Undiscounted: \$3,472,368



Proposed Improvements

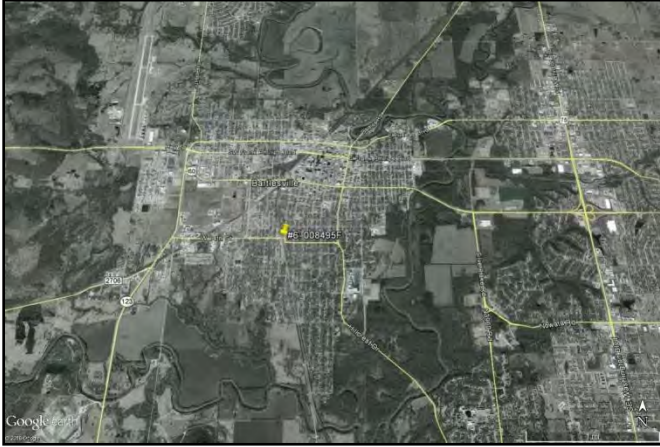
Signal: Replace with Cantilever Flashing Lights and Half Roadway Gates
Surface: NA
Additional: Pavement Markings and Signs

Cost: \$325,000

Needed Improvements: Safety and Quality of Life

ODOT 2016 TIGER Grant Application

Crossing #6 DOT 008495F



Project Location

County: Washington
City: Bartlesville

Tribal Jurisdiction: Cherokee and Delaware Tribes

Tribal Facilities within 5 miles: Cherokee Nation Health Clinic, Cherokee Nation Employment, Delaware Tribe HQ, Delaware Child Development Center, Cherokee Nation Housing Authority

Roadway: W 14th Street
On State Highway: No
Lanes: 4
AADT: 3404
Speed Limit: 30 mph
Surface: Concrete
Sidewalks: Yes
School Bus Route: No

Railroad: SKOL

Total Tracks: 1
Total Trains: 3
Max Train Speed: 40 mph
Signal Status: Cantilever Flashing Lights
Crossing Surface: Concrete

Safety

Accidents in last 5 years: 0

Community Access: Residential Bartlesville

Benefits

Discounted (7%): \$1,489,539

Undiscounted: \$3,098,904



Proposed Improvements

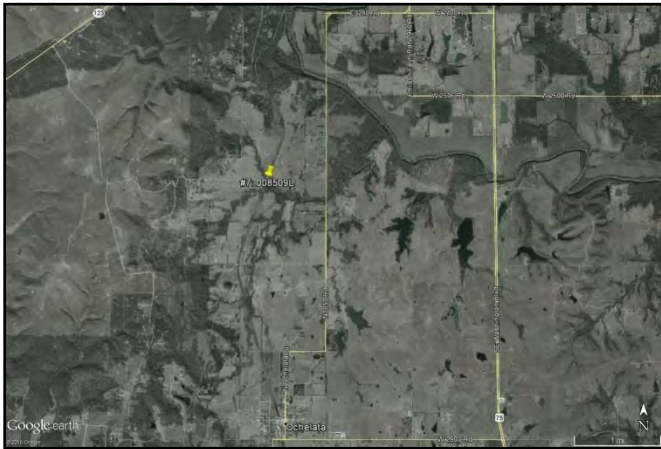
Signal: Add Half Roadway Gates
Surface: NA
Additional: Pavement Markings and Signs

Cost: \$225,000

Needed Improvements: Safety and Quality of Life

ODOT 2016 TIGER Grant Application

Crossing #7 DOT 008509L



Project Location

County: Washington
City: Near Ochelata

Tribal Jurisdiction: Cherokee

Tribal Facilities within 5 miles: Cooweescoowee Health Center

Roadway: E2600
On State Highway: No
Lanes: 2
AADT: 131
Speed Limit: 40 mph
Surface: Asphalt
Sidewalks: No
School Bus Route: No

Railroad: SKOL
Total Tracks: 1
Total Trains: 3
Max Train Speed: 40 mph
Signal Status: Crossbucks
Crossing Surface: Timber

Safety

Accidents in last 5 years: 0

Community Access: NA

Benefits

Discounted (7%): \$534,961
Undiscounted: \$1,112,957



Proposed Improvements

Signal: Replace with Flashing Lights and Half Roadway Gates
Surface: NA
Additional: Pavement Markings and Signs

Cost: \$300,000

Needed Improvements: Safety

ODOT 2016 TIGER Grant Application

Crossing #8 DOT 434122E



Project Location

County: Sequoyah
City: Muldrow

Tribal Jurisdiction: Cherokee

Tribal Facilities within 5 miles: Muldrow Cherokee
Community Organization

Roadway: Fargo Street
On State Highway: No
Lanes: 2
AADT: 150
Speed Limit: 25 mph
Surface: Asphalt
Sidewalks: No
School Bus Route: No

Railroad: UP
Total Tracks: 1
Total Trains: 23
Max Train Speed: 50 mph
Signal Status: Crossbucks
Crossing Surface: Concrete

Safety

Accidents within last 5 years: 0

Community Access: NA

Benefits

Discounted (7%): \$1,284,516

Undiscounted: \$2,672,366



Proposed Improvements

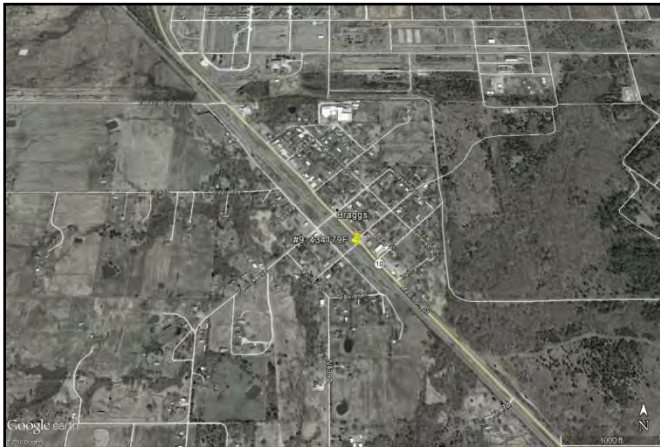
Signal: Replace with Flashing Lights and Half Roadway Gates
Surface: New Concrete Crossing Panels & Resurface Track
Approaches
Additional: Pavement Markings and Signs

Cost: \$355,000

Needed Improvements: Safety and Quality of Life

ODOT 2016 TIGER Grant Application

Crossing #9 DOT 434179F



Project Location

County: Muskogee
City: Braggs

Tribal Jurisdiction: Cherokee
Tribal Facilities within 5 miles: NA

Roadway: Craig Avenue
On State Highway: No
Lanes: 2
AADT: 150
Speed Limit: 25 mph
Surface: Asphalt
Sidewalks: No
School Bus Route: No

Railroad: UP
Total Tracks: 2
Total Trains: 23
Max Train Speed: 50 mph
Signal Status: Crossbucks
Crossing Surface: Concrete

Safety

Accidents within last 5 years: 0

Community Access: Hwy 10

Benefits

Discounted (7%): \$1,261,779
Undiscounted: \$2,625,062



Proposed Improvements

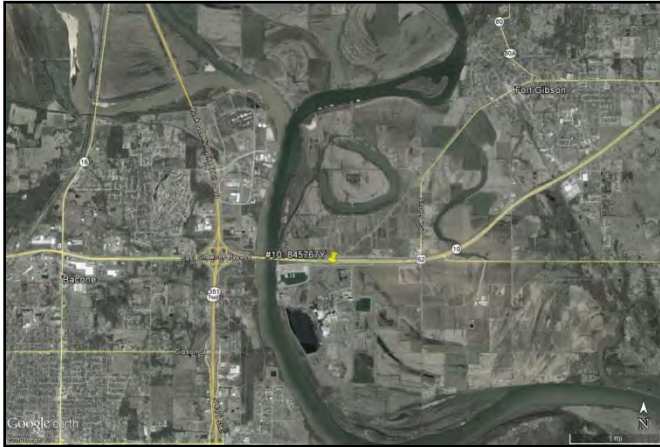
Signal: Replace with Flashing Lights and Half Roadway Gates
Surface: New Concrete Crossing Panels & Resurface Track Approaches
Additional: Pavement Markings and Signs

Cost: \$375,000

Needed Improvements: Safety and Quality of Life

ODOT 2016 TIGER Grant Application

Crossing #10 DOT 845767Y



Project Location

County: Muskogee
City: Fort Gibson

Tribal Jurisdiction: Cherokee

Tribal Facilities within 5 miles: Cherokee Casino - Fort Gibson, Cherokee National Cemetery/Fort Gibson Cemetery

Roadway: Three Forks Road
On State Highway: Yes
Lanes: 2
AADT: 11400
Speed Limit: 50 mph
Surface: Asphalt
Sidewalks: No
School Bus Route: No

Railroad: UP
Total Tracks: 2
Total Trains: 5
Max Train Speed: 10 mph
Signal Status: Pedestal Flashing Lights
Crossing Surface: Timber

Safety

Accidents within last 5 years: 0

Community Access: Port Authority of Muskogee

Benefits

Discounted (7%): \$1,010,748

Undiscounted: \$2,102,807



Proposed Improvements

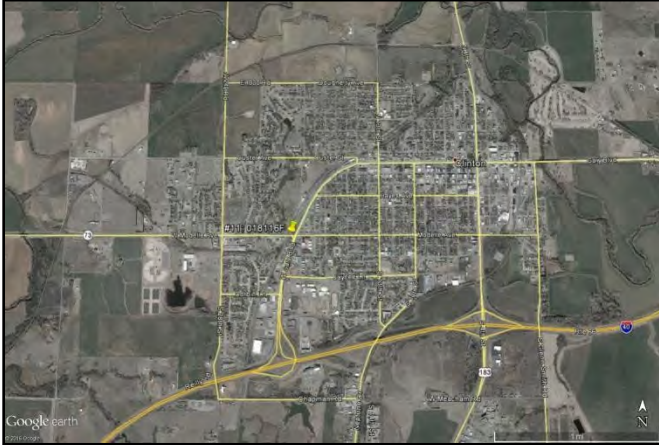
Signal: Replace with Flashing Lights and Half Roadway Gates
Surface: Replace with Concrete Crossing Panels & Resurface Track Approaches
Additional: Pavement Markings and Signs

Cost: \$400,000

Needed Improvements: Safety and Quality of Life

ODOT 2016 TIGER Grant Application

Crossing #11 DOT 018116F



Project Location

County: Custer
City: Clinton

Tribal Jurisdiction: Cheyenne-Arapahoe

Tribal Facilities within 5 miles: Clinton Indian United Methodist Church, Clinton Indian Hospital, C&A Housing Authority, C&A Nutrition Program, C&A Ambulance service, Lucky Star Casino – Clinton, Clinton Head Start Center (C&A)

Roadway: Modelle Avenue
On State Highway: Yes
Lanes: 4
AADT: 6750
Speed Limit: 35 mph
Surface: Concrete
Sidewalks: No
School Bus Route: Yes

Railroad: FMRC

Total Tracks: 1
Total Trains: 1
Max Train Speed: 20 mph
Signal Status: Flashing Lights
Crossing Surface: Concrete

Safety

Accidents in last 5 years: 0

Community Access: Hwy 73

Benefits

Discounted (7%): \$1,238,013

Undiscounted: \$2,575,618



Proposed Improvements

Signal: Replace with Cantilever Flashing Lights and Half Roadway Gates

Surface: New Concrete Crossing Panels & Resurface Track Approaches

Additional: Pavement Markings and Signs

Cost: \$390,000

Needed Improvements: Safety and Quality of Life

ODOT 2016 TIGER Grant Application

Crossing #12

DOT 020710S



Project Location

County: Carter

City: Ardmore

Tribal Jurisdiction: Chickasaw Nation

Tribal Facilities within 5 miles: Chickasaw Nation after school program, Chickasaw Nation WIC Office, Chickasaw Nation Wellness Program, Chickasaw Nation Head Start, Chickasaw Nation Regional Office, Chickasaw Nation Housing, Ardmore Head Start Center

Roadway: NE 3rd Avenue

On State Highway: No

Lanes: 2

AADT: 1000

Speed Limit: 25 mph

Surface: Asphalt

Sidewalks: No

School Bus Route: No

Railroad: BNSF

Total Tracks: 5

Total Trains: 32

Max Train Speed: 25 mph

Signal Status: Pedestal Flashing Lights

Crossing Surface: Concrete

Safety

Accidents in last 5 years: 1

Community Access: Amtrak Station

Benefits

Discounted (7%): \$683,314

Undiscounted: \$1,421,597



Crossing Number: 020710S Lat:34.1749 Long:-97.1228



Proposed Improvements

Signal: Replace with Flashing Lights and Half Roadway Gates

Surface: New Concrete Crossing Panels & Resurface Track Approaches

Additional: Pavement Markings and Signs & Roadway Surfacing between extents of railroad right-of-way

Cost: \$580,000

Needed Improvements: Safety and Quality of Life

ODOT 2016 TIGER Grant Application

Crossing #13 DOT 672020R



Project Location

County: Pontotoc
City: Roff

Tribal Jurisdiction: Chickasaw Nation
Tribal Facilities within 5 miles: NA

Roadway: E0016 / 6th Street
On State Highway: No
Lanes: 2
AADT: 420
Speed Limit: 25 mph
Surface: Asphalt
Sidewalks: No
School Bus Route: No

Railroad: BNSF
Total Tracks: 1
Total Trains: 11
Max Train Speed: 55 mph
Signal Status: Crossbucks
Crossing Surface: Timber

Safety

Accidents within last 5 years: 1

Community Access: NA

Benefits

Discounted (7%): \$2,462,623

Undiscounted: \$5,123,353



Proposed Improvements

Signal: Replace with Flashing Lights and Half Roadway Gates
Surface: Replace with Concrete Crossing Panels & Resurface Track Approaches
Additional: Pavement Markings and Signs

Cost: \$300,000

Needed Improvements: Safety

ODOT 2016 TIGER Grant Application

Crossing #14

DOT 673060S



Project Location

County: Johnston

City: Near Ravia

Tribal Jurisdiction: Chickasaw Nation

Tribal Facilities within 5 miles: NA

Roadway: Cobb Road
On State Highway: No
Lanes: 2
AADT: 54
Speed Limit: 45 mph
Surface: Gravel
Sidewalks: No
School Bus Route: No

Railroad: BNSF
Total Tracks: 1
Total Trains: 11
Max Train Speed: 55 mph
Signal Status: Crossbucks
Crossing Surface: Concrete

Safety

Accidents within last 5 years: 1

Community Access: NA

Benefits

Discounted (7%): \$752,705

Undiscounted: \$1,565,962



Proposed Improvements

Signal: Replace with Flashing Lights and Half Roadway Gates

Surface: NA

Additional: NA

Cost: \$300,000

Needed Improvements: Safety

ODOT 2016 TIGER Grant Application

Crossing #15 DOT 600221J



Project Location

County: Pittsburg
City: McAlester

Tribal Jurisdiction: Choctaw Nation

Tribal Facilities within 5 miles: Choctaw Nation Community Center, Choctaw Nation Food Distribution Center, Choctaw Travel Plaza, Choctaw Nation Health Center, Choctaw Nation Mahli Issuba (counselor), Choctaw Nation CHR Office, Choctaw Nation McAlester Head Start

Roadway: 2nd Street
On State Highway: No
Lanes: 2
AADT: 4500
Speed Limit: 25 mph
Surface: Concrete
Sidewalks: Yes
School Bus Route: No

Railroad: AOK
Total Tracks: 1
Total Trains: 5
Max Train Speed: 25 mph
Signal Status: Pedestal Flashing Lights
Crossing Surface: Asphalt

Safety

Accidents within last 5 years: 0

Community Access: Hwy 270

Benefits

Discounted (7%): \$1,339,204
Undiscounted: \$2,786,142



Proposed Improvements

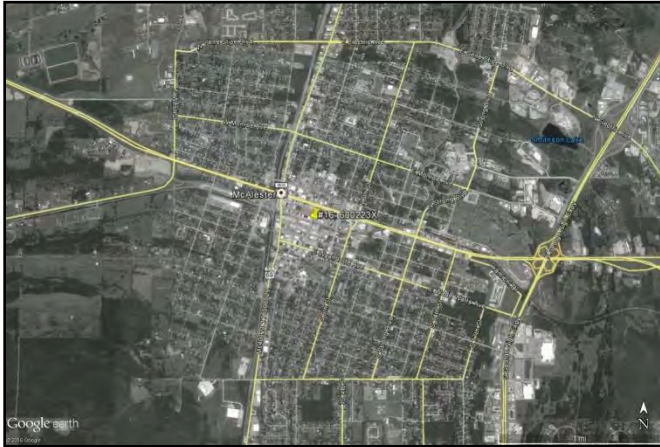
Signal: Replace with Flashing Lights and Half Roadway Gates
Surface: Replace with Concrete Crossing Panels & Resurface Track Approaches
Additional: Pavement Markings and Signs

Cost: \$350,000

Needed Improvements: Safety and Quality of Life

ODOT 2016 TIGER Grant Application

Crossing #16 DOT 600223X



Project Location

County: Pittsburg
City: McAlester

Tribal Jurisdiction: Choctaw Nation

Tribal Facilities within 5 miles: Choctaw Nation Community Center, Choctaw Nation Food Distribution Center, Choctaw Travel Plaza, Choctaw Nation Health Center, Choctaw Nation Mahli Issuba (counselor), Choctaw Nation CHR Office, Choctaw Nation McAlester Head Start

Roadway: 3rd Street
On State Highway: No
Lanes: 2
AADT: 4000
Speed Limit: 25 mph
Surface: Concrete
Sidewalks: Yes
School Bus Route: No

Railroad: AOK
Total Tracks: 1
Total Trains: 5
Max Train Speed: 25 mph
Signal Status: Pedestal Flashing Lights
Crossing Surface: Concrete

Safety

Accidents within last 5 years: 0

Community Access: NA

Benefits

Discounted (7%): \$1,312,442

Undiscounted: \$2,730,464



Proposed Improvements

Signal: Replace with Flashing Lights and Half Roadway Gates
Surface: New Concrete Crossing Panels & Resurface Track Approaches
Additional: Pavement Markings and Signs

Cost: \$350,000

Needed Improvements: Safety and Quality of Life

ODOT 2016 TIGER Grant Application

Crossing #17 DOT 600224E



Project Location

County: Pittsburg
City: McAlester

Tribal Jurisdiction: Choctaw Nation

Tribal Facilities within 5 miles: Choctaw Nation Community Center, Choctaw Nation Food Distribution Center, Choctaw Travel Plaza, Choctaw Nation Health Center, Choctaw Nation Mahli Issuba (counselor), Choctaw Nation CHR Office

Roadway: 5th Street
On State Highway: No
Lanes: 2
AADT: 5000
Speed Limit: 25 mph
Surface: Concrete
Sidewalks: No
School Bus Route: No

Railroad: AOK
Total Tracks: 2
Total Trains: 5
Max Train Speed: 25 mph
Signal Status: Cantilever Flashing Lights
Crossing Surface: Asphalt

Safety

Accidents within last 5 years: 0

Community Access: NA

Benefits

Discounted (7%): \$1,091,509

Undiscounted: \$2,270,826



Proposed Improvements

Signal: Replace with Flashing Lights and Half Roadway Gates
Surface: Replace with Concrete Crossing Panels & Resurface Track Approaches
Additional: Pavement Markings and Signs

Cost: \$350,000

Needed Improvements: Safety and Quality of Life

ODOT 2016 TIGER Grant Application

Crossing #18 DOT 600227A



Project Location

County: Pittsburg
City: McAlester

Tribal Jurisdiction: Choctaw Nation

Tribal Facilities within 5 miles: Choctaw Nation Community Center, Choctaw Nation Food Distribution Center, Choctaw Travel Plaza, Choctaw Nation Health Center, Choctaw Nation Mahli Issuba (counselor), Choctaw Nation CHR Office, Choctaw Nation McAlester Head Start

Roadway: Strong Avenue
On State Highway: No
Lanes: 4
AADT: 4800
Speed Limit: 25 mph
Surface: Concrete
Sidewalks: Yes
School Bus Route: No

Railroad: AOK

Total Tracks: 1
Total Trains: 5
Max Train Speed: 25 mph
Signal Status: Cantilever Flashing Lights
Crossing Surface: Asphalt

Safety

Accidents within last 5 years: 0

Community Access: NA

Benefits

Discounted (7%): \$1,547,329

Undiscounted: \$3,219,133



Proposed Improvements

Signal: Replace with Cantilever Flashing Lights and Half Roadway Gates
Surface: Replace with Concrete Crossing Panels & Resurface Track Approaches
Additional: Pavement Markings and Signs

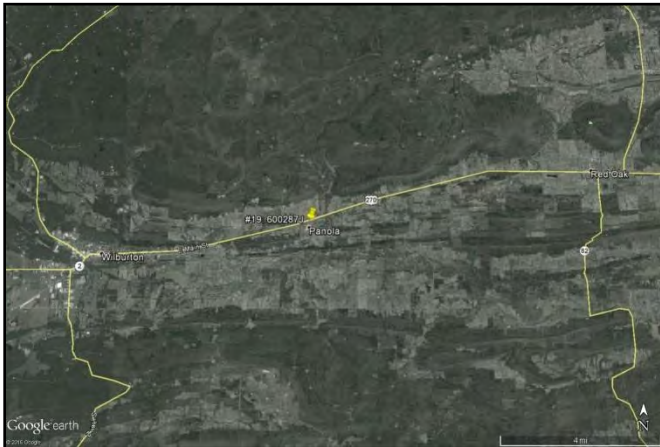
Cost: \$305,000

Needed Improvements: Safety and Quality of Life

ODOT 2016 TIGER Grant Application

Crossing #19

DOT 600287J



Project Location

County: Latimer

City: Near Wilburton

Tribal Jurisdiction: Choctaw Nation

Tribal Facilities within 5 miles: NA

Roadway: Panola Road

On State Highway: No

Lanes: 2

AADT: 250

Speed Limit: 25 mph

Surface: Asphalt

Sidewalks: No

School Bus Route: No

Railroad: AOK

Total Tracks: 1

Total Trains: 1

Max Train Speed: 30 mph

Signal Status: Crossbucks

Crossing Surface: Asphalt

Safety

Accidents within last 5 years: 0

Community Access: 0

Benefits

Discounted (7%): \$326,798

Undiscounted: \$679,884



Proposed Improvements

Signal: Replace with Flashing Lights and Half Roadway Gates

Surface: Replace with Concrete Crossing Panels & Resurface Track Approaches

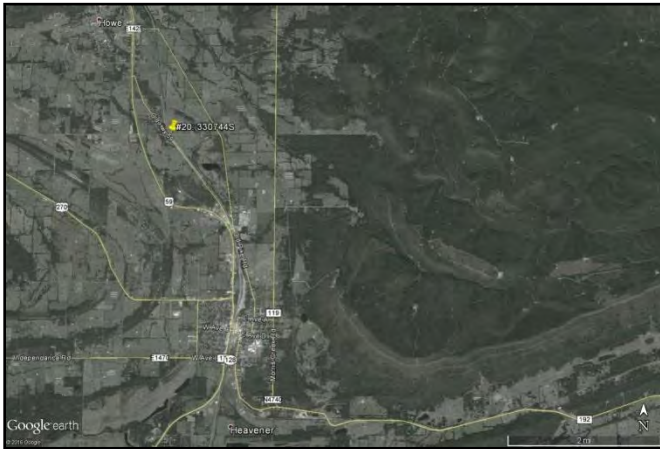
Additional: Pavement Markings and Signs

Cost: \$350,000

Needed Improvements: Safety and Quality of Life

ODOT 2016 TIGER Grant Application

Crossing #20 DOT 330744S



Project Location

County: Le Flore
City: Howe

Tribal Jurisdiction: Choctaw Nation
Tribal Facilities within 5 miles: NA

Roadway: E1440 / Forest Hill Road
On State Highway: No
Lanes: 2
AADT: 150
Speed Limit: 45 mph
Surface: Asphalt
Sidewalks: No
School Bus Route: No

Railroad: KCS
Total Tracks: 2
Total Trains: 34
Max Train Speed: 40 mph
Signal Status: Pedestal Flashing Lights
Crossing Surface: Asphalt/Timber

Safety

Accidents within last 5 years: 0

Community Access: Old Hwy 79

Benefits

Discounted (7%): \$1,009,719
Undiscounted: \$2,100,665



Proposed Improvements

Signal: Replace with Flashing Lights and Half Roadway Gates
Surface: NA
Additional: Pavement Markings and Signs

Cost: \$300,000

Needed Improvements: Safety and Quality of Life

ODOT 2016 TIGER Grant Application

Crossing #21 DOT 413699G



Project Location

County: Pittsburg
City: Savanna

Tribal Jurisdiction: Choctaw Nation
Tribal Facilities within 5 miles: Choctaw Travel Plaza

Roadway: Choctaw Avenue
On State Highway: No
Lanes: 2
AADT: 364
Speed Limit: 25 mph
Surface: Asphalt
Sidewalks: No
School Bus Route: No

Railroad: UP
Total Tracks: 1
Total Trains: 22
Max Train Speed: 50 mph
Signal Status: Crossbucks
Crossing Surface: Concrete

Safety

Accidents within last 5 years: 0

Community Access: Hwy 69

Benefits

Discounted (7%): \$1,459,594

Undiscounted: \$3,036,606



Proposed Improvements

Signal: Replace with Flashing Lights and Half Roadway Gates
Surface: NA
Additional: Pavement Markings and Signs

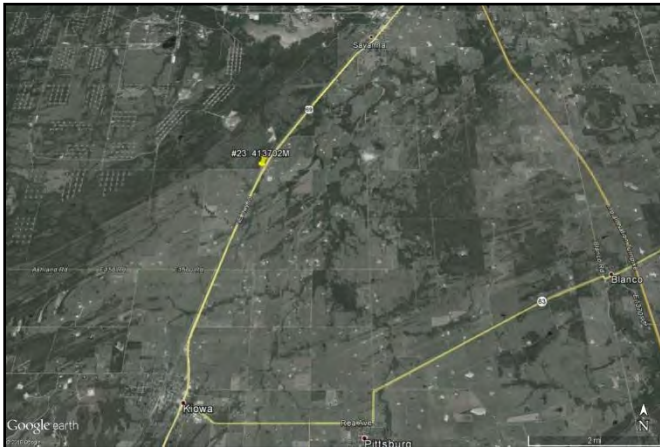
Cost: \$355,000

Needed Improvements: Safety and Quality of Life

ODOT 2016 TIGER Grant Application

Crossing #22

DOT 413702M



Project Location

County: Pittsburg

City: Near Kiowa

Tribal Jurisdiction: Choctaw Nation

Tribal Facilities within 5 miles: NA

Roadway: E1540

On State Highway: No

Lanes: 2

AADT: 87

Speed Limit: 45 mph

Surface: Gravel

Sidewalks: No

School Bus Route: No

Railroad: UP

Total Tracks: 1

Total Trains: 17

Max Train Speed: 40 mph

Signal Status: Crossbucks

Crossing Surface: Concrete

Safety

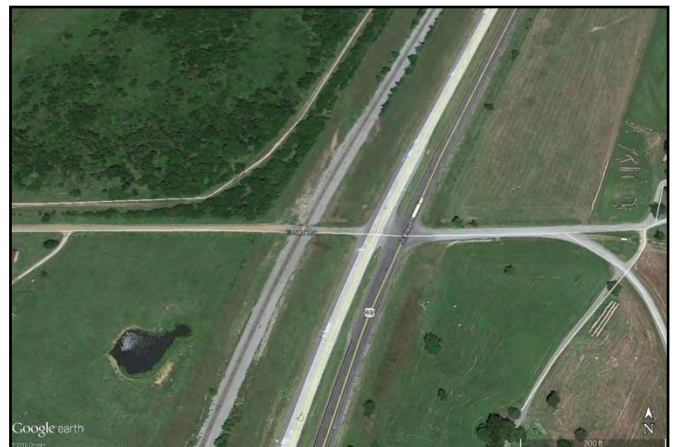
Accidents within last 5 years: 0

Community Access: Hwy 69

Benefits

Discounted (7%): \$300,385

Undiscounted: \$624,935



Proposed Improvements

Signal: Replace with Flashing Lights and Half Roadway Gates

Surface: NA

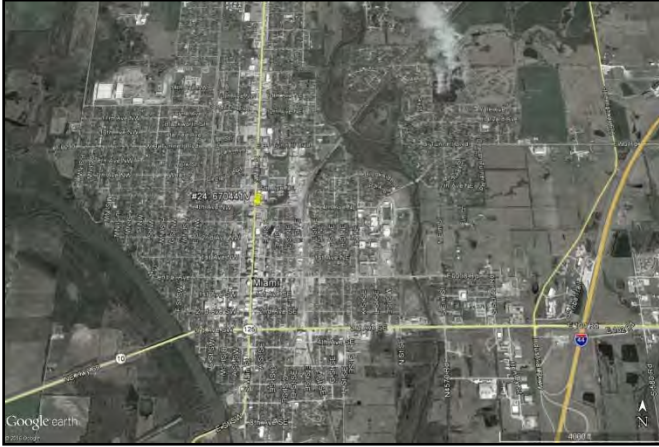
Additional: Signs

Cost: \$275,000

Needed Improvements: Safety and Quality of Life

ODOT 2016 TIGER Grant Application

Crossing #23 DOT 670441V



Project Location

County: Ottawa
City: Miami

Tribal Jurisdiction: Miami

Tribal Facilities within 5 miles: Miami Nation Enterprises, numerous tribal offices and programs at intersection of Hwy 10 and I-44

Roadway: US-69B / Main Street
On State Highway: Yes
Lanes: 4
AADT: 16100
Speed Limit: 25 mph
Surface: Asphalt
Sidewalks: No
School Bus Route: No

Railroad: BNSF
Total Tracks: 1
Total Trains: 4
Max Train Speed: 10 mph
Signal Status: Pedestal Flashing Lights
Crossing Surface: Asphalt

Safety

Accidents within last 5 years: 0

Community Access: Northeastern Oklahoma A&M College

Benefits

Discounted (7%): \$1,432,943
Undiscounted: \$2,981,160



Proposed Improvements

Signal: Replace with Cantilever Flashing Lights and Half Roadway Gates
Surface: Replace with Concrete Crossing Panels & Resurface Track Approaches
Additional: Pavement Markings and Signs

Cost: \$305,000

Needed Improvements: Safety and Quality of Life

ODOT 2016 TIGER Grant Application

Crossing #24 DOT 674008R



Project Location

County: Muskogee
City: Muskogee

Tribal Jurisdiction: Muskogee (Creek) Nation

Tribal Facilities within 5 miles: Bacone College,
Fife Indian United Methodist Church, Creek Nation
Casino Muskogee

Roadway: York Street
On State Highway: No
Lanes: 4
AADT: 14000
Speed Limit: 35 mph
Surface: Asphalt
Sidewalks: No
School Bus Route: Yes

Railroad: BNSF
Total Tracks: 1
Total Trains: 1
Max Train Speed: 5 mph
Signal Status: Crossbucks
Crossing Surface: Concrete

Safety

Accidents within last 5 years: 0

Community Access: East Shawnee Bypass

Benefits

Discounted (7%): \$595,223

Undiscounted: \$1,238,329



Proposed Improvements

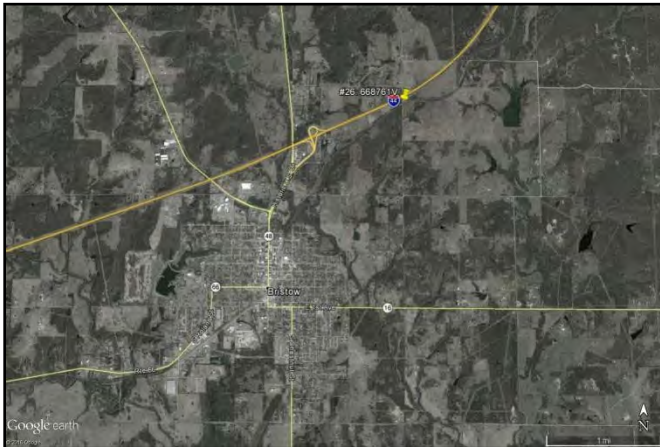
Signal: Replace with Cantilever Flashing Lights and Half
Roadway Gates and Additional Pedestal Flashing Lights
Surface: New Concrete Crossing Panels & Resurface Track
Approaches
Additional: Pavement Markings and Signs

Cost: \$325,000

Needed Improvements: Safety and Quality of Life

ODOT 2016 TIGER Grant Application

Crossing #25 DOT 668761V



Project Location

County: Creek
City: Near Slick

Tribal Jurisdiction: Muscogee (Creek) Nation
Tribal Facilities within 5 miles: Creek Nation Casino Bristow, Mutteloke United Methodist Church, Bristow Indian Community Center

Roadway: N3730
On State Highway: No
Lanes: 2
AADT: 250
Speed Limit: 50 mph
Surface: Gravel
Sidewalks: No
School Bus Route: No

Railroad: SLWC
Total Tracks: 1
Total Trains: 6
Max Train Speed: 45 mph
Signal Status: Crossbucks
Crossing Surface: Asphalt/Timber

Safety

Accidents within last 5 years: 0

Community Access: I-44

Benefits

Discounted (7%): \$398,070
Undiscounted: \$828,164



Proposed Improvements

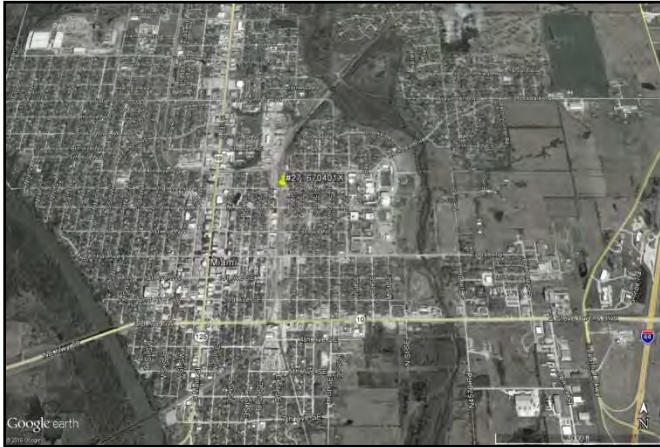
Signal: Replace with Flashing Lights and Half Roadway Gates
Surface: Replace with Concrete Crossing Panels & Resurface Track Approaches
Additional: Signs

Cost: \$300,000

Needed Improvements: Safety and Quality of Life

ODOT 2016 TIGER Grant Application

Crossing #26 DOT 670401X



Project Location

County: Ottawa
City: Miami

Tribal Jurisdiction: Ottawa Tribe

Tribal Facilities within 5 miles: Miami Nation Enterprises, numerous tribal offices and programs at intersection of Hwy 10 and I-44

Roadway: 3rd NE Avenue
On State Highway: No
Lanes: 2
AADT: 2700
Speed Limit: 25 mph
Surface: Asphalt
Sidewalks: No
School Bus Route: No

Railroad: BNSF
Total Tracks: 1
Total Trains: 8
Max Train Speed: 35 mph
Signal Status: Pedestal Flashing Lights
Crossing Surface: Concrete

Safety

Accidents within last 5 years: 1

Community Access: Northeastern Oklahoma A&M College

Benefits

Discounted (7%): \$2,110,805
Undiscounted: \$4,391,415



Proposed Improvements

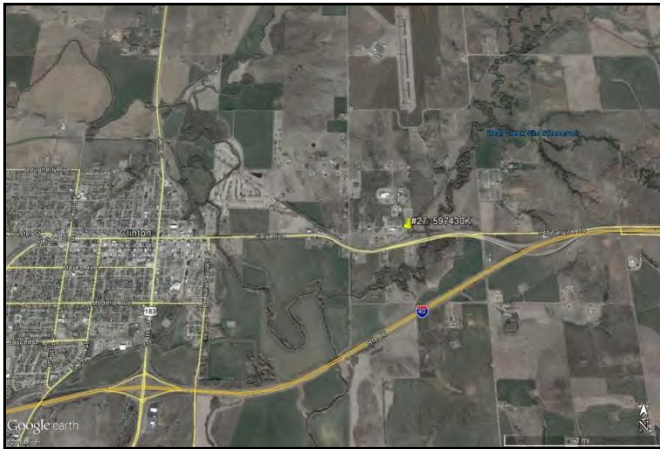
Signal: Replace with Flashing Lights and Half Roadway Gates
Surface: NA
Additional: Pavement Markings and Signs

Cost: \$275,000

Needed Improvements: Safety and Quality of Life

ODOT 2016 TIGER Grant Application

Crossing #27 DOT 597430K



Project Location

County: Custer
City: Clinton

Tribal Jurisdiction: Cheyenne-Arapaho

Tribal Facilities within 5 miles: Clinton Indian United Methodist Church, Clinton Indian Hospital, C&A Housing Authority, C&A Nutrition Program, C&A Ambulance Service, Lucky Star Casino, Clinton Head Start Center (C&A)

Roadway: N2274 Road
On State Highway: No
Lanes: 2
AADT: 1100
Speed Limit: 25 mph
Surface: Asphalt
Sidewalks: No
School Bus Route: No

Railroad: FRMC

Total Tracks: 1
Total Trains: 4
Max Train Speed: 25 mph
Signal Status: Flashing Lights
Crossing Surface: Asphalt

Safety

Accidents within last 5 years: 0

Community Access: I-40 Service Road

Benefits

Discounted (7%): \$644,549

Undiscounted: \$1,340,949



Proposed Improvements

Signal: Replace with Flashing Lights and Half Roadway Gates
Surface: Replace with Concrete Crossing Panels & Resurface Track Approaches
Additional: Pavement Markings and Signs

Cost: \$350,000

Needed Improvements: Safety and Quality of Life