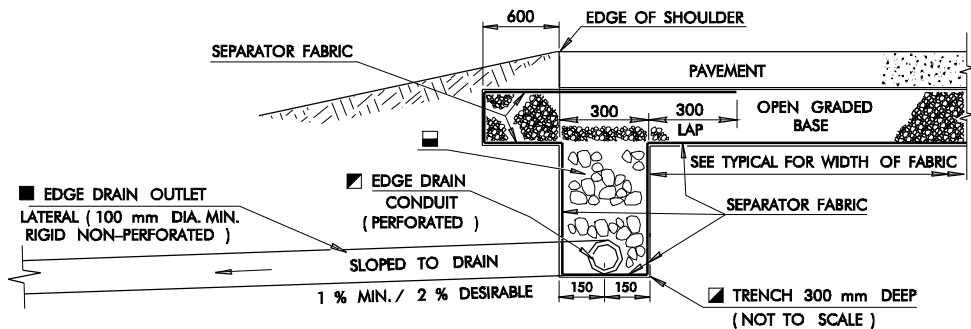


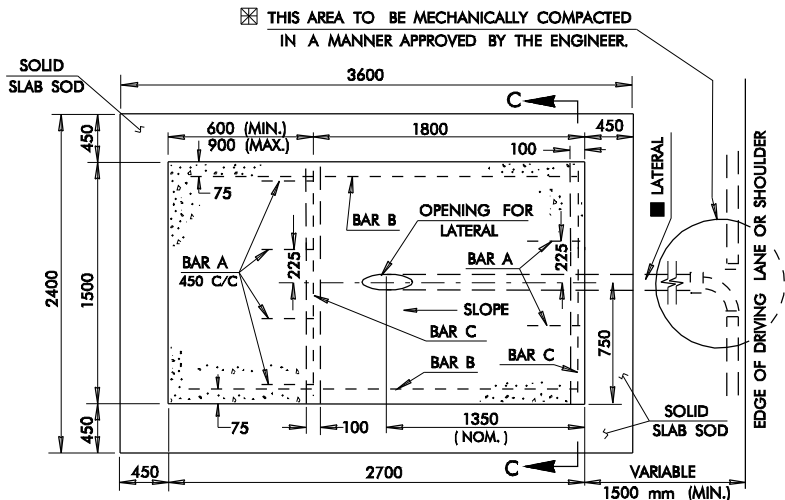
DESCRIPTION	REVISIONS	DATE
RE-ISSUE W/METRIC 1999 SPECS. Wire Mesh Mater. Specs. & Note, Add Outlet Lateral Sump Detail, Pay Item Note 1gc 7/99		



TYPICAL SECTION

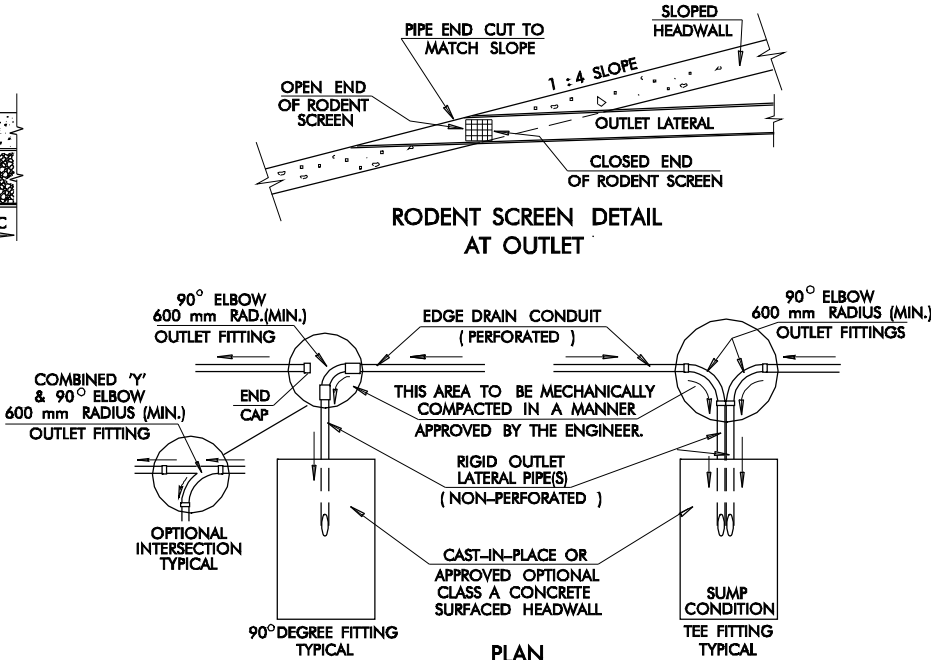
PAVEMENT EDGE DRAIN: NEW CONSTRUCTION

- THE PERFORATED PIPE USED AS EDGE DRAIN CONDUIT SHALL BE PLACED ON TOP OF SEPARATOR MATERIAL IN BOTTOM OF 300 mm x 300 mm TRENCH.
- COST OF TRENCH EXCAVATION TO BE INCLUDED IN PRICE BID FOR THE PERFORATED EDGE DRAIN CONDUIT. (SEE GENERAL NOTES FOR EDGE DRAIN LATERAL TRENCHING).
- SEPARATOR FABRIC SHALL MEET THE MINIMUM REQUIREMENTS OF THE 1999 METRIC STANDARD SPECIFICATIONS, SECTION 325.
- FLOW CAPACITY OF OUTLET LATERAL TO BE EQUAL OR GREATER THAN FLOW CAPACITY OF EDGE DRAIN CONDUIT, I.E., EQUIVALENT DIAMETERS (MIN.).
- AGGREGATE COVER MATERIAL MEETING MINIMUM REQUIREMENTS OF THE 1999 METRIC STANDARD SPECS., SECTION 701.06, AGGREGATE NO. 57. COST OF AGGREGATE COVER MATERIAL TO BE INCLUDED IN PRICE BID FOR PERFORATED EDGE DRAIN CONDUIT.

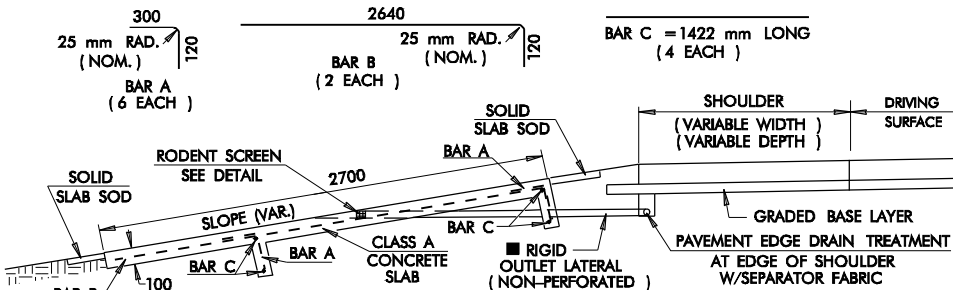


TOP VIEW

NOTE: OPENING FOR LATERAL PIPE WILL VARY IN SIZE AND SHAPE, DEPENDING ON THE SIZE OF THE OUTLET LATERAL PIPE AND THE SLOPE OF THE STRUCTURE. THE OUTLET LATERAL PIPE SHALL BE CUT TO CONFORM TO THE TOP SURFACE OF THE OUTLET HEADWALL.



OUTLET LATERAL CONNECTIONS



PAVEMENT EDGE DRAIN AT EDGE OF SHOULDER W/CAST-IN-PLACE CONCRETE OUTLET HEADWALL

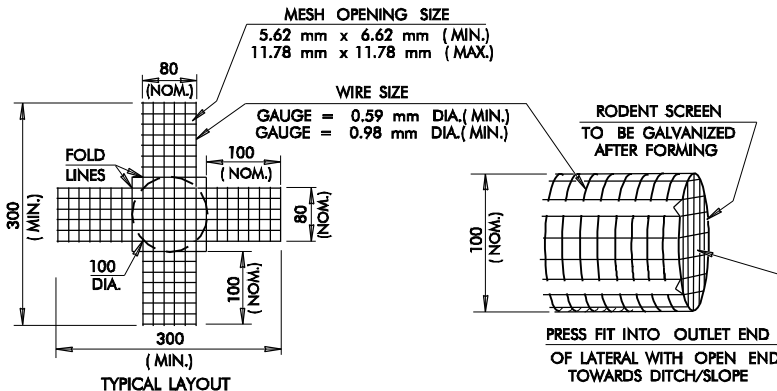
PRICE BID FOR CAST-IN-PLACE OUTLET HEADWALL INCLUDES SURFACE PREPARATION, CLASS A CONCRETE, REINFORCING STEEL, LABOR AND ANY INCIDENTALS NECESSARY FOR CONSTRUCTION.

CLASS A CONCRETE SHALL MEET REQUIREMENTS OF SECTION 509 OF THE 1999 METRIC STANDARD SPECIFICATIONS AND HAVE A ROUGHENED, BRUSHED SURFACE TEXTURE.

CONSTRUCTION QUANTITIES FOR ONE CONCRETE HEADWALL WITH CURTAIN WALLS EQUALS 0.465 CUBIC METERS OF CLASS A CONCRETE AND 13.0 KILOGRAMS OF STEEL.

ALL REINFORCING STEEL SHALL BE NO. 13M DEFORMED BARS AND MEET MINIMUM REQUIREMENTS OF SECTION 511 OF THE 1999 METRIC STANDARD SPECIFICATIONS.

SOLID SLAB SODDING ESTIMATED AT 4.82 SQ. METERS PER MAT LOCATION SHALL BE INCLUDED FOR PAYMENT IN THE PRICE BID FOR THE OUTLET HEADWALL.



RODENT SCREEN DETAIL

THIS RODENT SCREEN DETAIL IS TYPICAL ONLY AND OTHER DESIGN LAYOUT PATTERNS MAY BE ALLOWED IF APPROVED BY THE ENGINEER. NO TOLERANCE SHALL BE ALLOWED ON MATERIAL SPECIFICATIONS. RODENT SCREEN DIMENSIONS WILL CHANGE PROPORTIONATELY FOR ALTERNATE SIZE OUTLET LATERAL CONDUIT.

GENERAL NOTES

- ALL CONSTRUCTION AND MATERIAL REQUIREMENTS SHALL BE IN ACCORDANCE WITH THE 1999 METRIC STANDARD SPECIFICATIONS.
- INSTALLATION OF OUTLET LATERAL PIPES SHOULD BE SCHEDULED CONCURRENT WITH THE INSTALLATION OF PAVEMENT EDGE DRAIN.
- PAVEMENT EDGE DRAIN CONDUIT SHALL NOT BE LEFT IN PLACE LONGER THAN 72 HOURS WITHOUT BEING CONNECTED TO OUTLET LATERAL PIPES.
- OUTLET ELBOWS (90°) SHALL BE USED WHEN PIPE EDGE DRAIN SLOPE EXCEEDS TWO (2) PERCENT.
- SOLID SLAB SODDING TO BE INCLUDED IN PRICE BID FOR OUTLET HEADWALL.
- OUTLET LATERAL SHALL BE PLACED NEAREST TO LOW POINT IN SAG AREAS.
- CONNECTION OF THE OUTLET LATERAL PIPE TO THE OUTLET FITTING SHALL BE DONE IN A MANNER APPROVED BY THE ENGINEER. COST OF ALL CAPS, FITTINGS, LATERAL PIPE, BONDING MATERIALS, RODENT SCREENS, TRENCHING AND BACKFILLING NEEDED TO INSTALL OUTLET LATERAL PIPE SHALL BE INCLUDED IN THE PRICE BID FOR EDGE DRAIN OUTLET LATERAL (NONPERFORATED).
- EDGE DRAINS AND OUTLET LATERALS SHALL BE LOCATED ON LOW SIDE OF SUPER ELEVATED SECTIONS AT CURVES.

BASIS OF PAYMENT		
ITEM NO.	ITEM	UNIT
653.06(A)	EDGE DRAIN CONDUIT - PERFORATED	METER
653.06(B)	EDGE DRAIN OUTLET LATERAL - NONPERFORATED	METER
653.06(C)	OUTLET LATERAL HEADWALL	EACH
325.06	SEPARATOR FABRIC	SQ. METER

- THE DIMENSIONS OF PERFORATED AND NONPERFORATED CONDUITS SHALL BE DESIGNATED ON THE PLANS.

APPROVED BY ROADWAY ENGINEER	DATE
OKLAHOMA DEPT. OF TRANSPORTATION ROADWAY STANDARD (METRIC) PAVEMENT EDGE DRAIN	
1999 SPECIFICATIONS	PED-2 OOM
ALL DIMENSIONS ON THIS SHEET IN MILLIMETERS UNLESS OTHERWISE NOTED.	
R-140M	