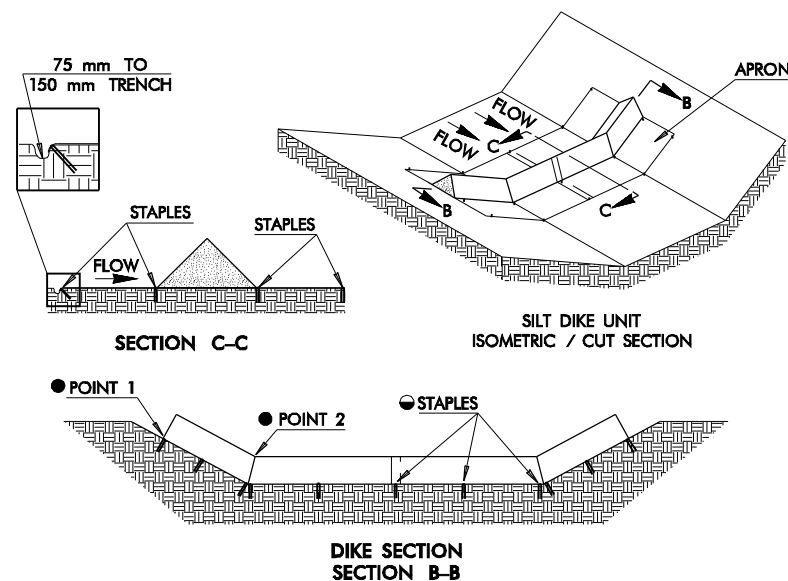
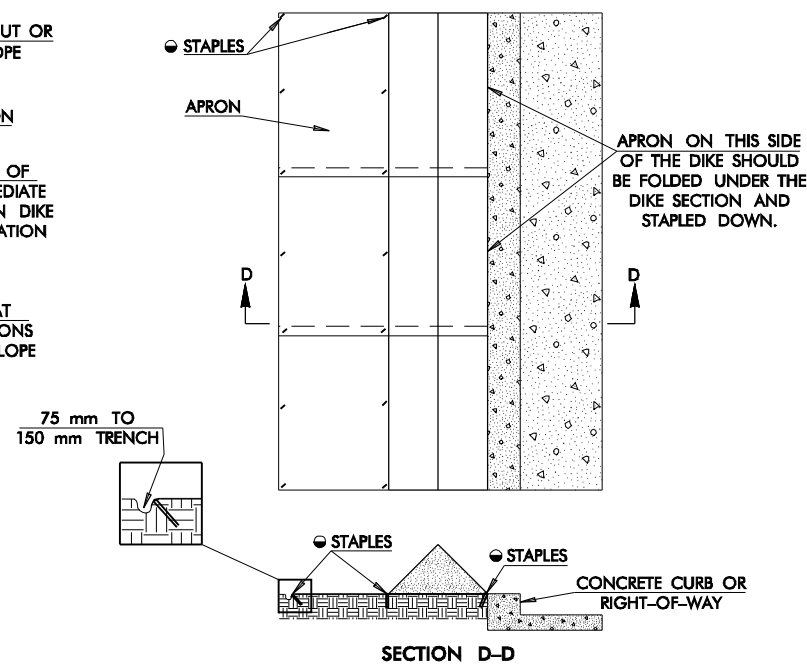


TEMPORARY SILT DIKE INSTALLATION  
FOR  
DIVERSION DIKES AND /OR DITCH LINER

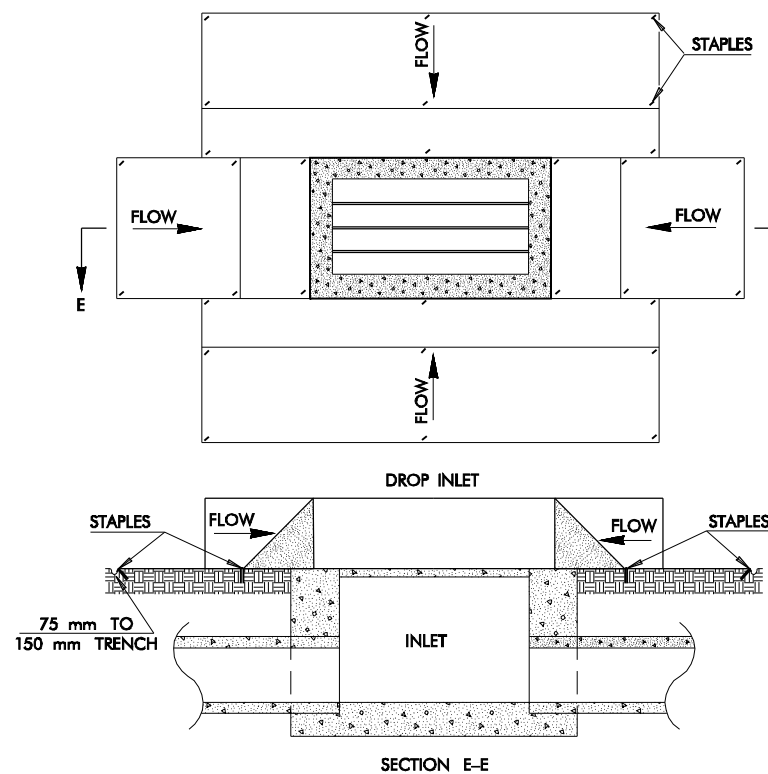


TEMPORARY SILT DIKE INSTALLATION  
FOR  
ROADWAY DITCH OR DRAINAGE DITCH

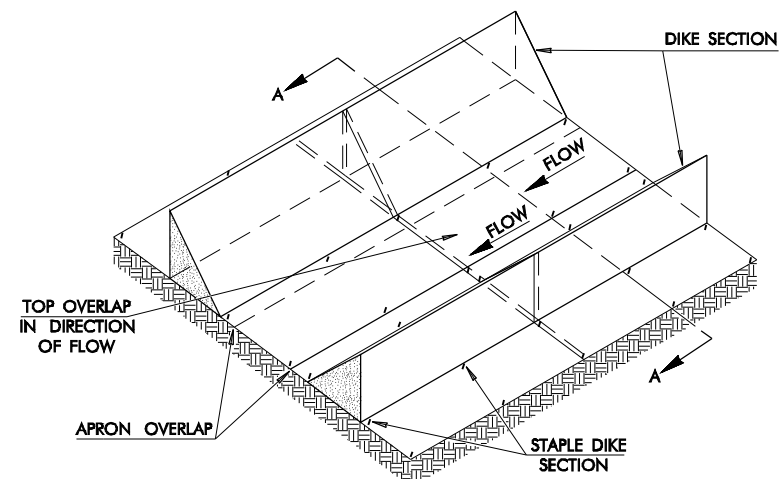
- POINT "1" MUST BE HIGHER THAN POINT "2" TO ENSURE THAT WATER FLOWS OVER THE DIKE AND NOT AROUND THE ENDS.
- STAPLES SHALL BE PLACED WHERE THE UNITS OVERLAP AND IN THE CENTER OF THE UNIT AS SHOWN ON THE DIAGRAM.



TEMPORARY SILT DIKE INSTALLATION  
FOR  
CONTINUOUS BARRIER



TEMPORARY SILT DIKE INSTALLATION  
FOR  
DROP INLETS



TEMPORARY SILT DIKE INSTALLATION  
FOR  
TEMPORARY DITCH LINER

#### GENERAL NOTES

1. THIS WORK SHALL CONSIST OF FURNISHING, INSTALLING, AND MAINTAINING THE TEMPORARY SILT DIKE. THE DIKES SHALL BE USED AS A CONTINUOUS LINE BARRIER AT THE TOE OF SLOPE OR ACROSS THE ROADWAY DITCH TO CONTAIN SEDIMENT AND MINIMIZE EROSION, OR AS DIRECTED BY THE ENGINEER. THESE DIKES SHALL BE INSTALLED AND LOCATED AS SOON AS CONSTRUCTION WILL ALLOW OR AS DIRECTED BY THE ENGINEER.
2. TEMPORARY SILT DIKE SHALL BE TRIANGULAR SHAPED HAVING A HEIGHT OF AT LEAST 200 mm TO 300 mm IN THE CENTER WITH EQUAL SIDES AND A 400 mm TO 500 mm BASE. THE TRIANGULAR SHAPED INNER MATERIAL SHALL BE URETHANE FOAM MEETING THE REQUIREMENTS FOR ASTM D-3574. THE OUTER COVER SHALL BE A WOVEN GEOTEXTILE FABRIC PLACED AROUND THE INNER MATERIAL AND ALLOWED TO EXTEND BEYOND BOTH SIDES OF THE TRIANGLE 600 mm TO 900 mm. THIS FABRIC SHOULD BE MILDEW RESISTANT, ROT-PROOF AND RESISTANT TO HEAT AND ULTRAVIOLET RADIATION MEETING THE REQUIREMENTS FOR SEDIMENT CONTROL IN AASHTO M 288. THE DIKES SHALL BE ATTACHED TO THE GROUND WITH WIRE STAPLES. THE STAPLES SHALL BE NO. 11 GAUGE WIRE AND BE AT LEAST 150 mm TO 200 mm LONG. STAPLES SHALL BE PLACED AS SHOWN ON THESE DETAILS.
- THE CONTRACTOR SHALL INSPECT ALL DIKES AFTER EACH RAINFALL EVENT OF AT LEAST 13 mm OR GREATER. ANY DEFICIENCIES OR DAMAGE SHALL BE REPAIRED BY THE CONTRACTOR. ACCUMULATED SILT OR DEBRIS SHALL BE REMOVED AND RELOCATED AS DIRECTED BY THE ENGINEER. IF DIKES ARE DAMAGED OR INADVERTENTLY MOVED DURING THE SILT REMOVAL PROCESS, THE CONTRACTOR SHALL IMMEDIATELY REPLACE AFTER DAMAGE OCCURS.
3. ACCEPTED TEMPORARY SILT DIKE, MEASURED AS PROVIDED ABOVE, WILL BE PAID FOR AT THE CONTRACT UNIT PRICE BID FOR TEMPORARY SILT DIKE. PRICE BID WILL INCLUDE THE COST OF FURNISHING THE DIKES, INSTALLING, MAINTAINING AND REMOVAL WHEN DIRECTED BY THE ENGINEER.

SYMBOLOLOGY  
SYMBOL TO BE USED TO DENOTE  
DEVICE ON PLANS



NOTE: SILT DIKE SHOULD ONLY BE USED FOR  
DROP INLETS IN SUMP LOCATIONS.  
FOR DROP INLETS ON GRADE, USE  
SEDIMENT TRAPS OR OTHER CONTROLS.

#### BASIS OF PAYMENT

ITEM NO.	ITEM	UNIT
227.06	TEMPORARY SILT DIKE	METER

APPROVED BY ROADWAY ENGINEER  
OKLAHOMA DEPT. OF TRANSPORTATION  
ROADWAY STANDARD ( METRIC )

#### TEMPORARY SILT DIKE

1999 SPECIFICATIONS	TSD-1	OOM
ALL DIMENSIONS ON THIS SHEET IN MILLIMETERS UNLESS OTHERWISE NOTED.		R-135M