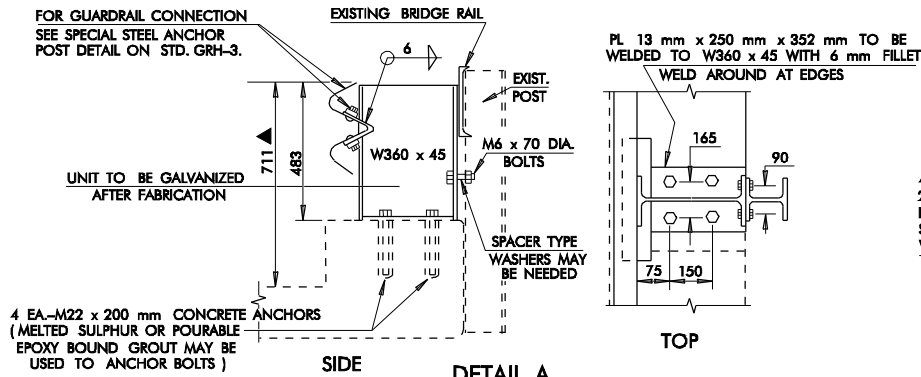
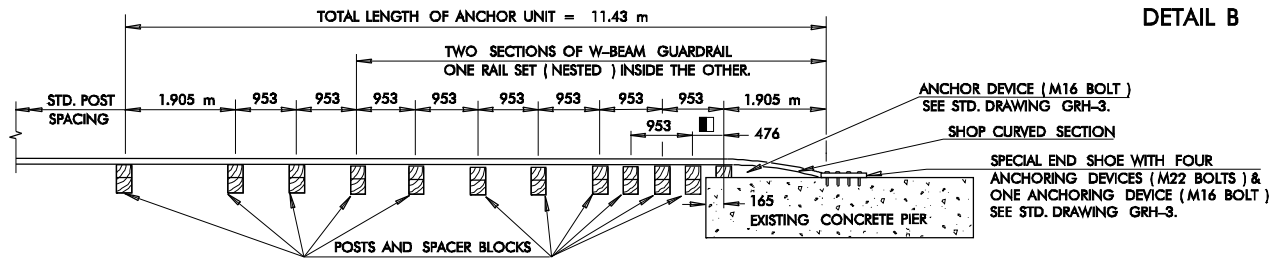


TYPE E ANCHOR UNIT

▲ RAIL HEIGHT TO TRANSITION TO STANDARD 711 mm HEIGHT (+25 mm) IN 3.81 m FROM END OF BRIDGE.

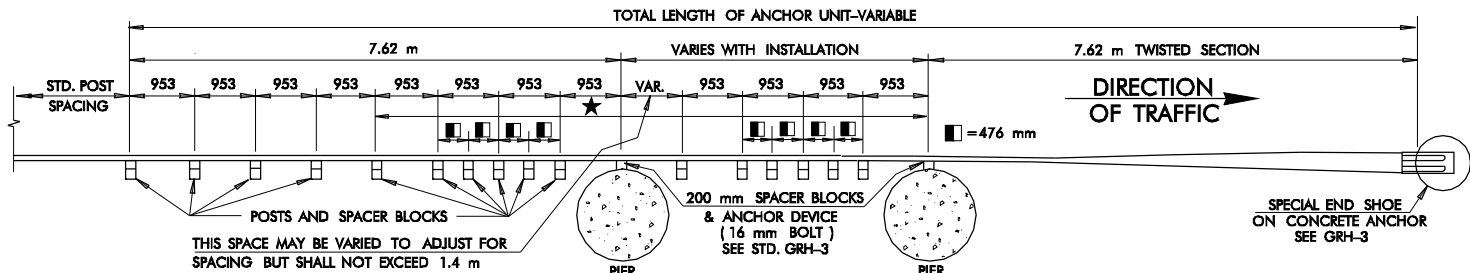


DETAIL OF ANCHOR TO BRIDGE WITH 450 mm CONCRETE CURB & STEEL HANDRAIL. IF CURB HEIGHT IS 150 mm OR LESS, SPECIAL STEEL ANCHOR POST MAY BE OMITTED & THE APPROACH RAIL ALIGNED WITH THE BRIDGE RAIL.

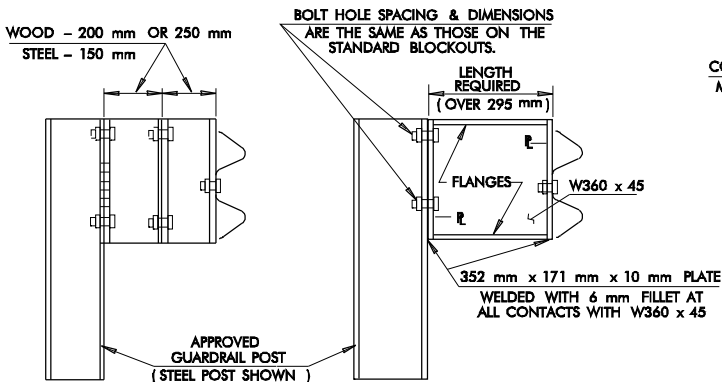


TYPE G ANCHOR UNIT

SPECIAL UNIT TO ANCHOR THE GUARDRAIL TO THE PIER AT/OR NEAR SHOULDER LINE

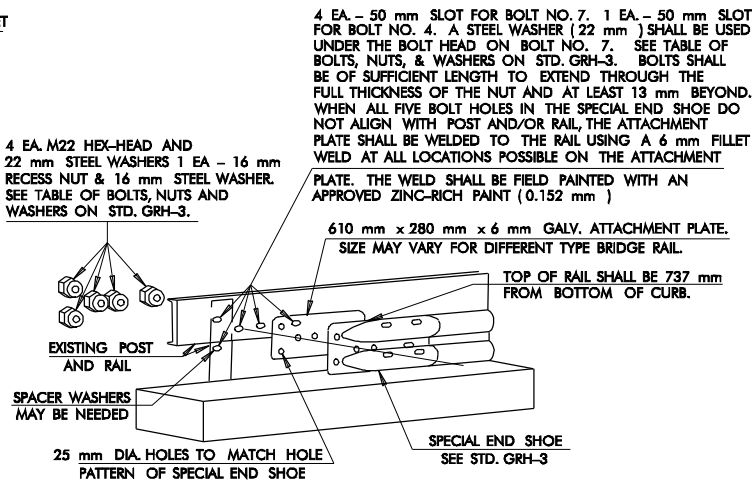


TYPE C ANCHOR UNIT



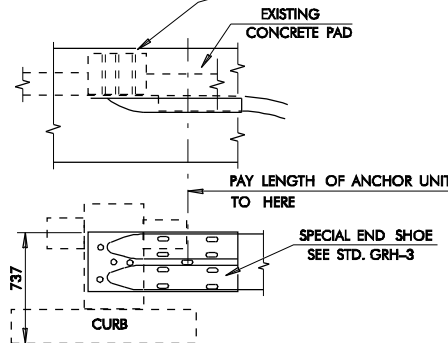
DETAIL OF LONG BLOCKOUT

IF MORE THAN ONE (1) EXTRA SPACER BLOCK (2 TOTAL) IS REQUIRED TO ALIGN THE POSTS OR TO CLEAR UNDERGROUND OBSTRUCTIONS, A SPECIAL WELDED MEMBER MUST BE FABRICATED WITH THE FLANGES ON TOP AND BOTTOM, AND PLATE MATERIAL ON THE ENDS AS SHOWN. THIS APPLIES TO STEEL AND WOOD POST INSTALLATIONS. TWO (2) EA. 16 mm LAG SCREWS MAY BE USED TO ATTACH BLOCKOUTS TO WOODEN POST.

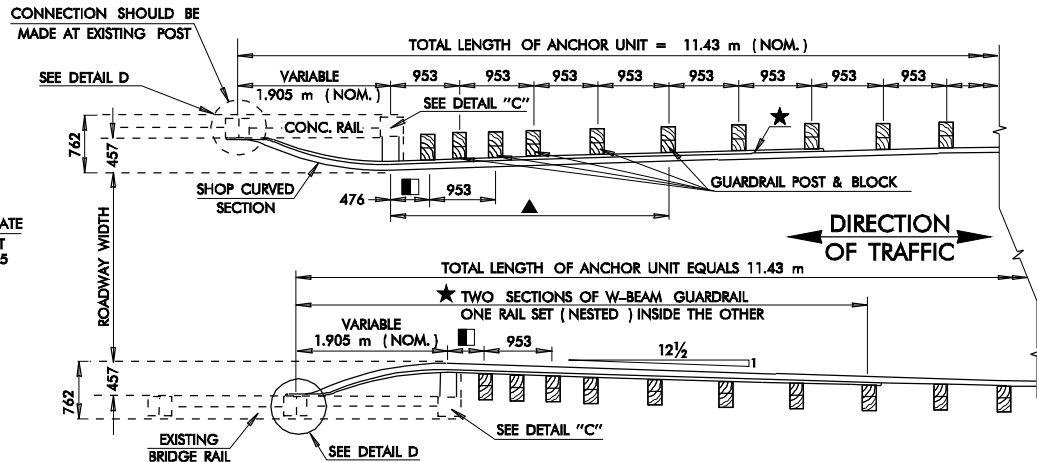


DETAIL B

4 EA. BOLT NO. 7 & ASSEMBLY. SEE TABLE OF BOLTS, NUTS, & WASHERS ON STD. GRH-3. BOLTS SHALL BE OF SUFFICIENT LENGTH TO EXTEND THROUGH THE FULL THICKNESS OF THE NUT AND AT LEAST 13 mm BEYOND.

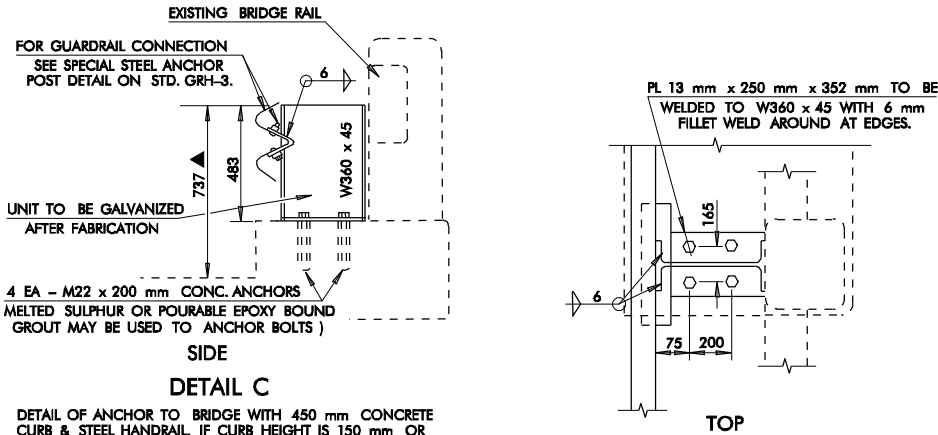


DETAIL D
(INTERIOR CONCRETE POST)



TYPE F ANCHOR UNIT

▲ RAIL HEIGHT TO TRANSITION TO STANDARD 711 mm HEIGHT IN 3.81 m FROM END OF BRIDGE.



DETAIL OF ANCHOR TO BRIDGE WITH 450 mm CONCRETE CURB & STEEL HANDRAIL. IF CURB HEIGHT IS 150 mm OR LESS SPECIAL STEEL ANCHOR POST MAY BE OMITTED & THE APPROACH RAIL ALIGNED WITH THE BRIDGE RAIL.

GENERAL NOTES

- ALL CONSTRUCTION AND MATERIAL REQUIREMENTS SHALL BE IN ACCORDANCE WITH THE 1999 METRIC STANDARD SPECIFICATIONS.
- GUARDRAIL POST HOLES DRILLED THROUGH THE APPROACH SLAB, CURB, OR DRAIN SHALL BE RESTORED TO THE ORIGINAL SHAPE OF THE SLAB, CURB, OR DRAIN WITH CONCRETE IN A MANNER APPROVED BY THE ENGINEER. COST TO BE INCLUDED IN OTHER ITEMS OF WORK.
- EXTRA LENGTH POSTS OR ADDITIONAL COMPACTED EARTH MAY BE REQUIRED AT OR NEAR BRIDGE, AS DIRECTED BY THE ENGINEER. SPECIAL DESIGN BLOCKOUT MAY BE REQUIRED.
- GUARDRAIL COMPONENTS SHALL MEET THE APPLICABLE STANDARDS OF 'A GUIDE TO STANDARDIZED HIGHWAY BARRIER RAIL HARDWARE' PREPARED AND APPROVED BY THE AASHTO-ARTBA-AGC JOINT COOPERATIVE COMMITTEE. TECHNICAL BULLETIN NUMBER 268 B.

BASIS OF PAYMENT

ITEM NO.	ITEM	UNIT
623.06(F)	GUARDRAIL ANCHOR UNIT (TYPE ●)	EACH

- INCLUDES GUARDRAIL, ALL HARDWARE AND OTHER APPURTENANCES NECESSARY TO CONSTRUCT UNIT.
- TYPE OF ANCHOR UNIT SHALL BE SPECIFIED.

APPROVED BY ROADWAY ENGINEER

DATE

OKLAHOMA DEPT. OF TRANSPORTATION
ROADWAY STANDARD (METRIC)

GUARDRAIL ANCHOR UNIT

1999 SPECIFICATIONS

GAU2-1

00M

ALL DIMENSIONS ON THIS SHEET IN MILLIMETERS UNLESS OTHERWISE NOTED.

R-133M