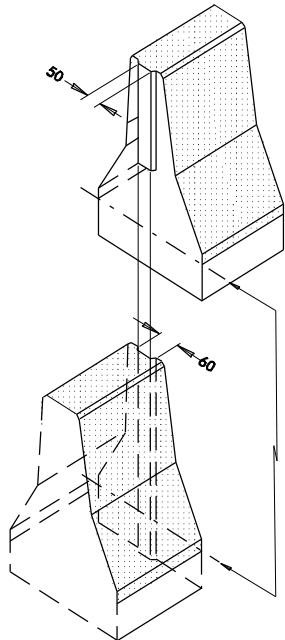
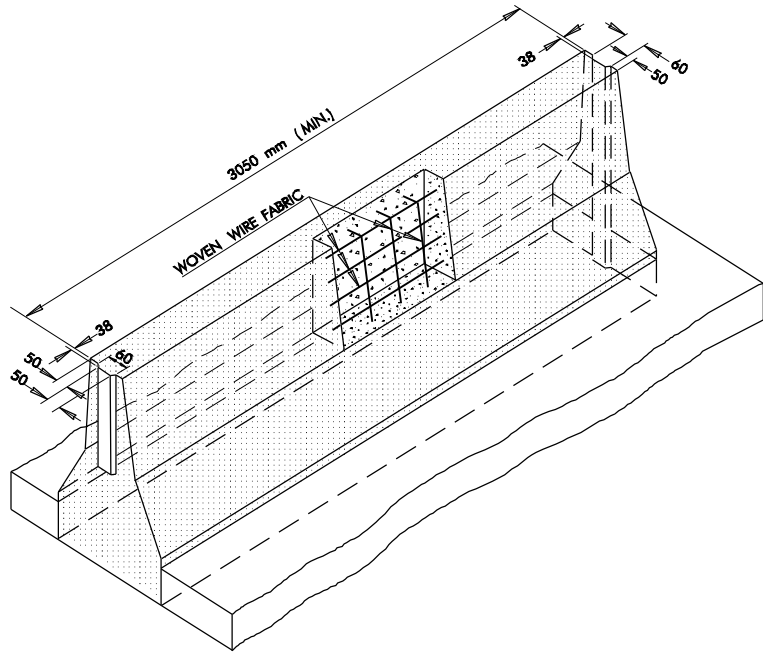
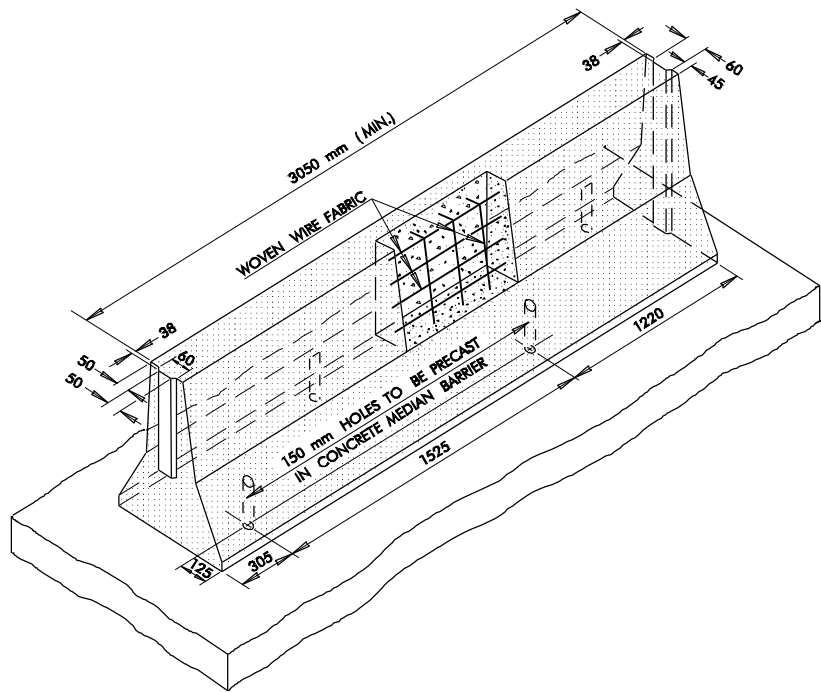


DESCRIPTION	REVISIONS	DATE
RE-ISSUE W/METRIC 1999 SPECS.		7/99



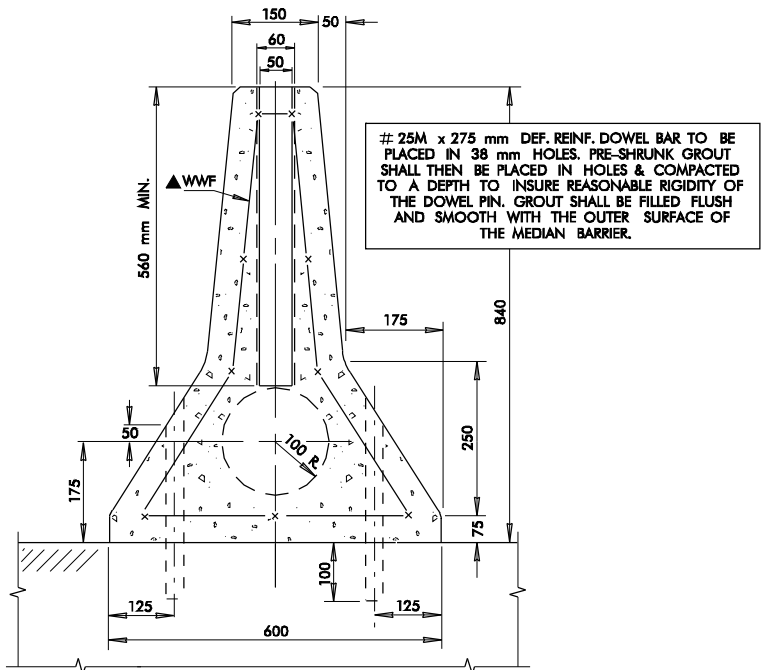
ASSEMBLY
(TYPICAL)

GENERAL NOTES

- ALL CONSTRUCTION AND MATERIAL REQUIREMENTS SHALL BE IN ACCORDANCE WITH THE 1999 METRIC STANDARD SPECIFICATIONS.
- WHEN JOINING TWO SECTIONS OF MEDIAN BARRIER, A COLD APPLIED MASTIC TYPE JOINT SEALER (SEC. 726.02C) SHALL BE APPLIED TO THE BOTTOM 430 mm ON BOTH ENDS OF BOTH JOINTS TO BE JOINED.
- ALL EXPOSED LONGITUDINAL EDGES OF THE MEDIAN BARRIER SHALL BE ROUNDED WITH A 25 mm RADIUS.
- COST OF JOINT FILLER & SEALER TO BE INCLUDED IN PRICE BID FOR MEDIAN BARRIER.
- WOVEN WIRE FABRIC AS SHOWN MAY BE EITHER SMOOTH WIRE (AASHTO M 55M) OR DEFORMED WIRE (AASHTO M 221M), (152 x 152 -MW9 x MW9 WELDED WIRE FABRIC).
- TERMINATING END(S) OF PRECAST MEDIAN BARRIER RUNS SHALL BE PROTECTED BY AN APPROVED SAFETY END TREATMENT.

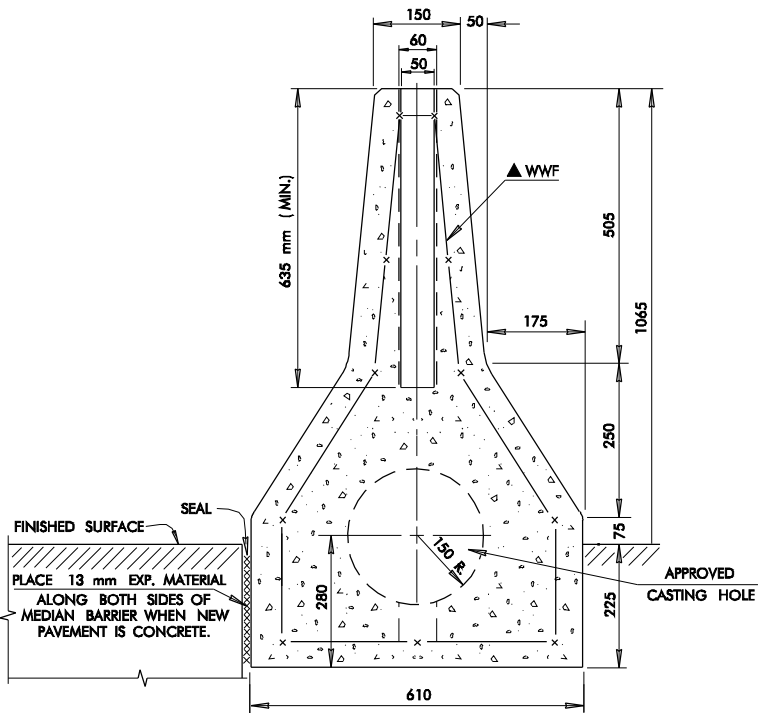
BASIS OF PAYMENT

ITEM NO.	ITEM	UNIT
627.06(A)	PRECAST CONCRETE MEDIAN BARRIER, TYPE I	METER
627.06(C)	PRECAST CONCRETE MEDIAN BARRIER, TYPE II	METER



PRECAST MEDIAN BARRIER – TYPE I
(FOR USE WITH EXISTING CONCRETE PAVEMENT)

NOTE: PRECAST HOLES FOR DOWEL PINS SHALL BE SPACED 1525 mm C/C ON ALTERNATE SIDES OF MEDIAN BARRIER SECTION.



PRECAST MEDIAN BARRIER – TYPE II
(FOR USE WITH NEW PAVEMENT CONSTRUCTION)

APPROVED BY ROADWAY ENGINEER

DATE

OKLAHOMA DEPT. OF TRANSPORTATION
ROADWAY STANDARD (METRIC)

PRECAST MEDIAN BARRIER

1999 SPECIFICATIONS

PMB-2

OOM

ALL DIMENSIONS ON THIS SHEET IN MILLIMETERS UNLESS OTHERWISE NOTED.

R-126AM