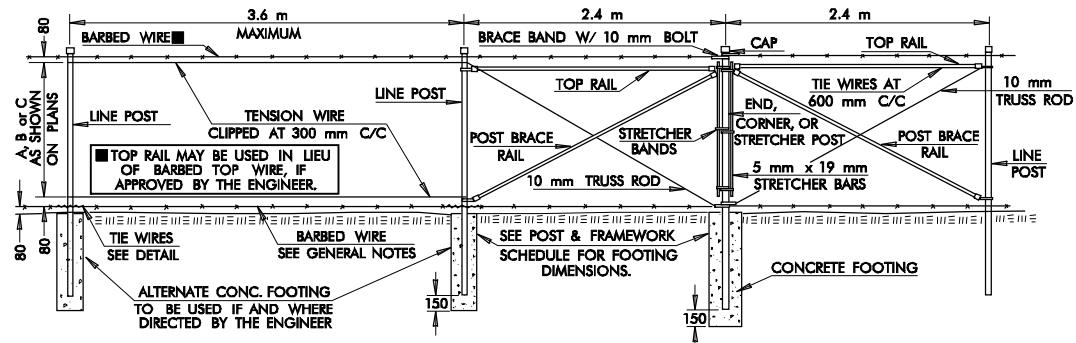
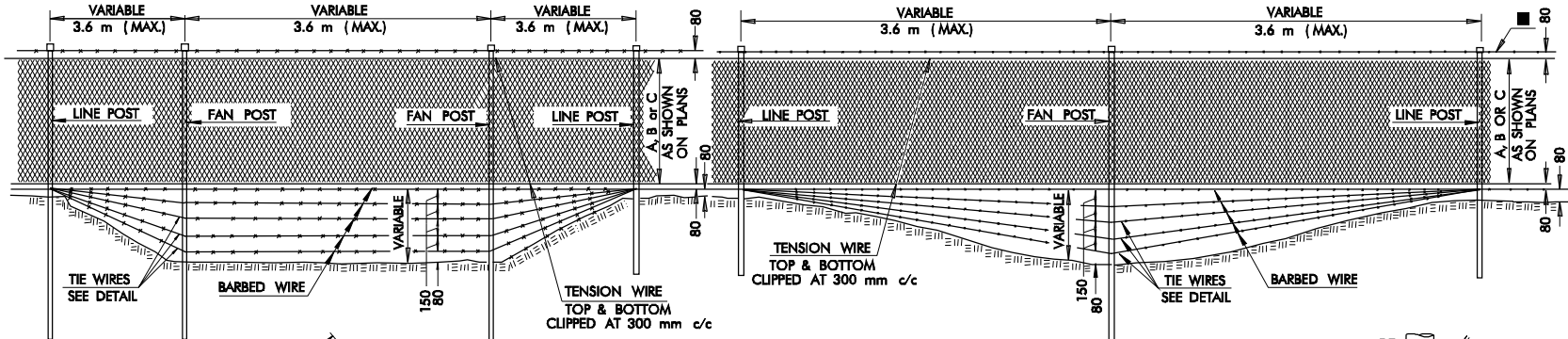


DESCRIPTION	REVISIONS	DATE
RE-ISSUE W/METRIC 1999 SPECS.		7/99

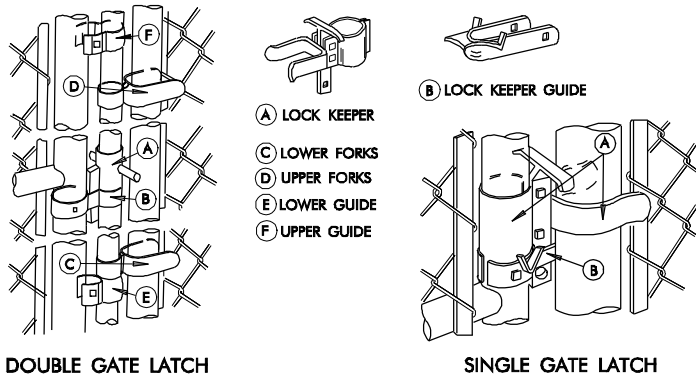
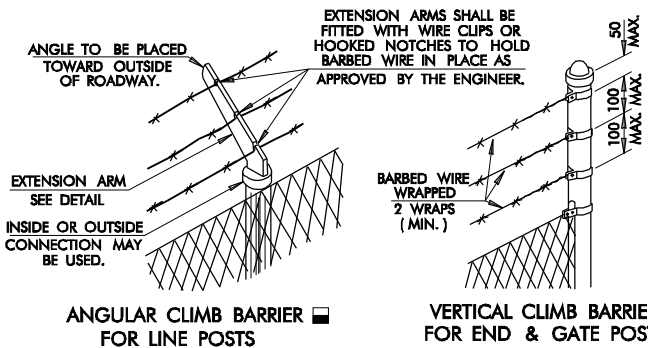
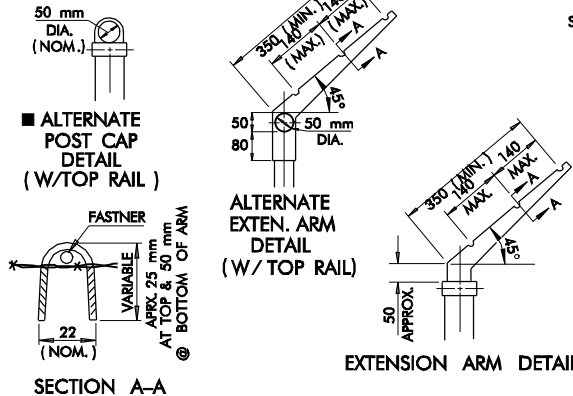


**TYPICAL LINE POST DETAIL**  
NOTE: LINE POSTS MAY BE DRIVEN OR EARTH EMBEDDED - SEE SPECIFICATIONS

**END, CORNER, & STRETCHER DETAILS**  
USE STRETCHER DETAILS AT ALL CORNERS, BENDS IN R/W, ON HILLTOPS, IN VALLEYS OR DEEP DEPRESSIONS AND AT 150 METERS MAXIMUM SPACING. (REQUIRES CONCRETE FOOTING)



**FAN DETAILS**  
SEE PLANS FOR APPROX. LOCATION OF FANS.



**TYPICAL GATE LATCH DETAIL**  
ALTERNATE TYPE LATCH MAY BE USED IF APPROVED BY THE ENGINEER.

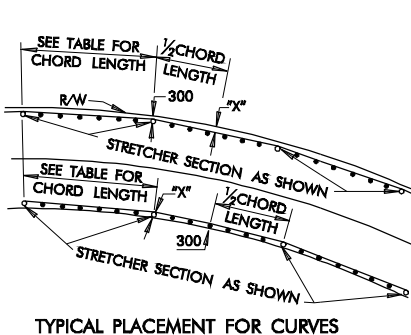
**CULVERT CONNECTION**

### GENERAL NOTES

- ALL CONSTRUCTION AND MATERIAL REQUIREMENTS SHALL BE IN ACCORDANCE WITH THE 1999 METRIC STANDARD SPECIFICATIONS.
- COST OF BARBED WIRE AND EXTRA LENGTH POSTS FOR FAN TO BE INCLUDED IN PRICE BID FOR CHAIN LINK FENCE.
- THE BOTTOM BARBED WIRE MAY BE OMITTED AND FABRIC INSTALLED 25 mm CLEAR FROM GROUND LINE IN LOCATIONS APPROVED BY THE ENGINEER.
- ALL MISCELLANEOUS HARDWARE SHALL BE FURNISHED GALVANIZED OR ALUMINUM ALLOY.
- CLIMB BARRIER SHOWN INTENDED ONLY TO SHOW AN ACCEPTABLE TYPE. ALTERNATE CLIMB BARRIERS APPROVED BY THE ENGINEER PRIOR TO INSTALLATION MAY BE USED. FENCE POST EXTENSION ARM SHALL BE MADE OF PRESSED STEEL OR MALLEABLE IRON AND SHALL BE GALVANIZED AFTER FABRICATION.
- CHAIN LINK FABRIC MAY BE ACCEPTED KNUCKLED BOTH SELVAGES IN ALL WIDTHS. NO FABRIC WITH TWISTS AND BARBS ON BOTH SELVAGES WILL BE ACCEPTED.
- STRETCHER POSTS TO BE USED IN GENERAL AT HILL TOPS AND AT BOTTOM OF VALLEYS AND AT A MAXIMUM OF 150 m APART.
- ALL POSTS WITH THE EXCEPTION OF LINE POSTS, FAN POSTS AND HEADWALL CONNECTION STRETCHER POSTS SHALL BE EMBEDDED IN CONCRETE WHEN FENCE IS BEING ERECTED ON EARTHEN FOUNDATIONS. OTHER POSTS MAY BE EMBEDDED IN CONCRETE IF AND AS DIRECTED BY THE ENGINEER TO SATISFY SPECIFIC FOOTING REQUIREMENTS.

POST & FRAMEWORK SCHEDULE														
SHAPE	LINE POST				END, CORNER, OR STRETCHER POSTS		GATE POSTS			TOP RAIL OR POST BRACE RAIL		GATE FRAMES		
	38 mm PIPE	ROLL FORMED HEAVY "C"	ROLL FORMED STAND. "C"	"H" RAIL	50 mm PIPE	ROLL FORMED	2.0m WIDE & LESS	2.1m TO 4.0m WIDE	4.1m TO 6.0m WIDE	32 mm PIPE	ROLL FORMED	GATES UP TO 2.0m WIDE	GATES 2.1m TO 4.0m	GATES 4.1m TO 6.0m
NOMENCLATURE	38 mm PIPE	ROLL FORMED HEAVY "C"	ROLL FORMED STAND. "C"	"H" RAIL	50 mm PIPE	ROLL FORMED	63 mm PIPE	88 mm PIPE	127 mm PIPE	32 mm PIPE	ROLL FORMED	32 mm PIPE	38 mm PIPE	38 mm PIPE
DIMENSIONS	48mm O.D. 40mm I.D. 3.7mm THK.	57mm x 43mm 43mm I.D. 3.1mm THK.	48mm x 42mm 42mm I.D. 2.7mm THK.	57mm x 43mm 43mm I.D. 3.2mm THK.	60mm O.D. 53mm I.D. 3.9mm THK.	88mm x 63mm 63mm I.D. 3.2mm THK.	73mm O.D. 63mm I.D. 5.2mm THK.	102mm O.D. 14mm I.D. 5.7mm THK.	141mm O.D. 128mm I.D. 6.7mm THK.	42mm O.D. 37mm I.D. 2.8mm THK.	41mm x 37mm 37mm I.D. 1.91mm THK.	42mm O.D. 37mm I.D. 4.6mm THK.	48mm O.D. 42mm I.D. 2.9mm THK.	48mm O.D. 41mm I.D. 3.7mm THK.
CRITICAL AXIS SEC. MODULUS	5.39 cm <sup>3</sup>	5.02 cm <sup>3</sup>	6.03 cm <sup>3</sup>	10.83 cm <sup>3</sup>	9.18 cm <sup>3</sup>	16.39 cm <sup>3</sup>	17.37 cm <sup>3</sup>	39.17 cm <sup>3</sup>	89.33 cm <sup>3</sup>	3.20 cm <sup>3</sup>	2.70 cm <sup>3</sup>	3.20 cm <sup>3</sup>	4.43 cm <sup>3</sup>	5.34 cm <sup>3</sup>
WEIGHT (kg/m)	4.05	3.93	2.75	4.85	5.43	7.22	8.62	13.55	21.75	2.69	2.00	2.69	3.21	4.02
LENGTH FOR GIVEN FENCE FAB. HT.	A 2.083m W/CONC. FOOTING; 2.235m IF DRIVEN.	B 2.464m W/CONC. FOOTING; 2.616m IF DRIVEN.	C 2.845m W/CONC. FOOTING; 3.000m IF DRIVEN.			2.235m W/CONC. FOOTING	2.616m W/CONC. FOOTING	2.770m W/CONC. FOOTING	3.150m W/CONC. FOOTING					
EMBEDMENT FOR GIVEN FENCE FAB. HT.	A 600mm IN CONC. FOOTING; 500mm IF DRIVEN.	B 675mm IN CONC. FOOTING; 500mm IF DRIVEN.	C 750mm IN CONC. FOOTING; 900mm IF DRIVEN.			762 mm IN CONC. FOOTING	838 mm IN CONC. FOOTING	990 mm IN CONC. FOOTING	1050 mm IN CONC. FOOTING					
FOOTING DIM. IN EARTH		225 mm DIA.			225mm DIA.	395mm DIA.	304mm DIA.	406mm DIA.	457mm DIA.					
FOOTING DIM. IN ROCK		900 mm DEEP			100mm DIA.	150mm DIA.	125mm DIA.	150mm DIA.	200mm DIA.					
		100 mm DIA.			225mm DIA.	406mm DIA.	304mm DIA.	406mm DIA.	609mm DIA.					

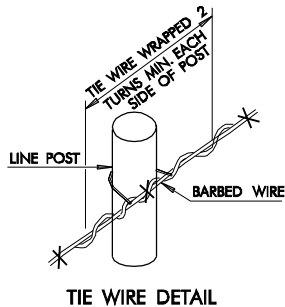
- MAXIMUM WIDTH OF SINGLE SWING GATE TO BE 6 m MAXIMUM OPENING MAY BE UP TO 12 m WIDE. DIAMETERS AS SHOWN ARE MINIMUM VALUES. DEPTHS FOR ROCK ARE MINIMUMS. DEPTHS SHOWN FOR CONCRETE FOOTINGS IN EARTH ARE MINIMUM FOR 2 m HIGH FENCE AND MAY BE REDUCED 225 mm FOR EACH METER OF FENCE HEIGHT LESS THAN 2 METERS HIGH.
- WIRE FABRIC TO BE WOVEN INTO LOCK LOOPS FOR THE ENTIRE WIDTH OF THE FABRIC.
- SECTION MODULUS AS SHOWN IS BASED UPON ASTM A53 AND AASHTO M 181M. SEE SPECIFICATIONS FOR SUBSTITUTION FORMULA ON CLASS 2 COLD FORMED STEEL PIPE.
- SECTION MODULUS AS SHOWN IS BASED UPON ASTM A 501 AND AASHTO M 181M. SEE SPECIFICATIONS FOR SUBSTITUTION FORMULA ON CLASS 2 COLD FORMED STEEL PIPE.



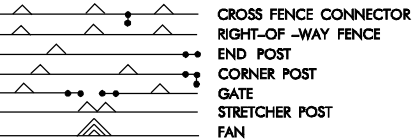
**TYPICAL PLACEMENT FOR CURVES**

SPACING FROM R/W TO FENCE	RADIUS	"X" mm
1600	370	
1400	380	
1200	395	
1000	410	
800	440	
600	485	
590	375	
500	390	
450	400	
400	415	
350	430	
300	450	
290	360	
250	370	
200	385	

SPACING FOR STRETCHER SECTION	
CURVE RADIUS	CHORD LENGTH
OVER 1600 m	STD. FENCE
600 m TO 1600 m	29.8 m
300 m TO 590 m	19.0 m
LESS THAN 300 m	11.8 m



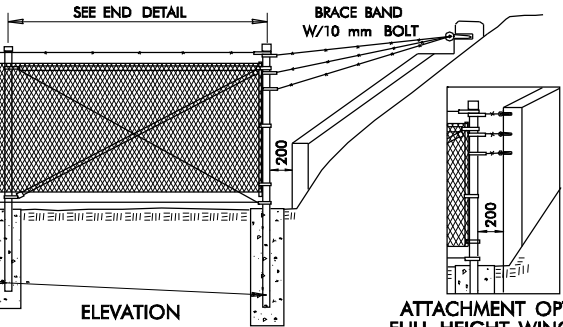
**TIE WIRE DETAIL**



**FENCING SYMBOLS ON PLANS**  
SEE PLAN AND PROFILE SHEETS FOR LOCATION.

**CONCRETE FOOTING FOR POSTS**

**FENCING SYMBOL THIS SHEET**



**ATTACHMENT OPTION FULL HEIGHT WING/WALL**  
WHEN WING OR WALL HEIGHT EQUALS FENCE HEIGHT

BASIS OF PAYMENT		
ITEM NO.	ITEM	UNIT
624.06 (D)	FENCE - STYLE CLF (11 mm HIGH-CLASS )	METER
624.06 (E)	GATES - STYLE CLF (11 mm HIGH-CLASS )	EACH
932.16	TOP RAIL	METER

WHEN TOP RAIL IS USED IN LIEU OF BARBED TOP WIRE THE COST OF TOP RAIL SHALL BE INCLUDED IN THE PRICE BID FOR FENCE. WHEN TOP RAIL (ONLY) IS ADDED AS A RETROFIT ITEM, THE COST OF TOP RAIL, INCLUDING ALL HARDWARE FOR INSTALLATION, SHALL BE PAID FOR AS TOP RAIL, BY THE LINEAR METER, AS INSTALLED.  
HEIGHT OF FENCE OR GATE SHALL BE SPECIFIED.  
CLASS A DESIGNATES FENCE OR GATE WITHOUT CLIMB BARRIER  
CLASS B DESIGNATES FENCE OR GATE WITH CLIMB BARRIER

APPROVED BY ROADWAY ENGINEER	DATE
OKLAHOMA DEPT. OF TRANSPORTATION ROADWAY STANDARD (METRIC ) RIGHT - OF - WAY FENCE STYLE - CLF (CHAIN LINK FENCE )	
1999 SPECIFICATIONS	RWF3-1 OOM
ALL DIMENSIONS ON THIS SHEET IN MILLIMETERS UNLESS OTHERWISE NOTED.	R-112M