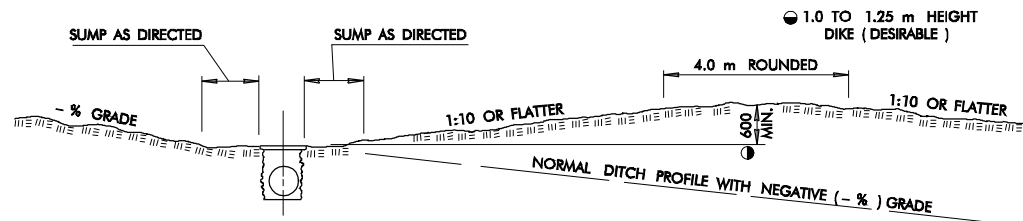
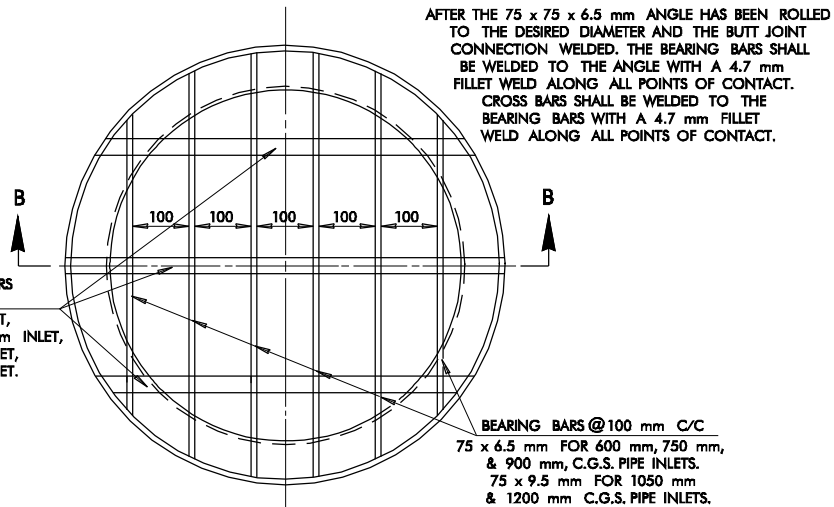


PLAN

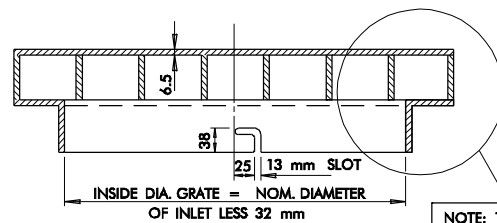


TYPICAL DIKE IN DITCH

25 x 6.5 mm CROSS BARS @ 200 mm C/C
2 BARS FOR 600 mm INLET,
3 BARS FOR 750 & 900 mm INLET,
4 BARS FOR 1050 mm INLET,
5 BARS FOR 1200 mm INLET.

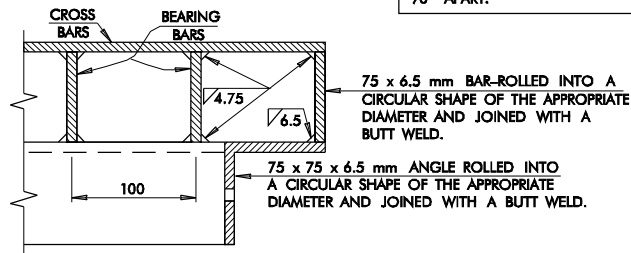


DETAIL A

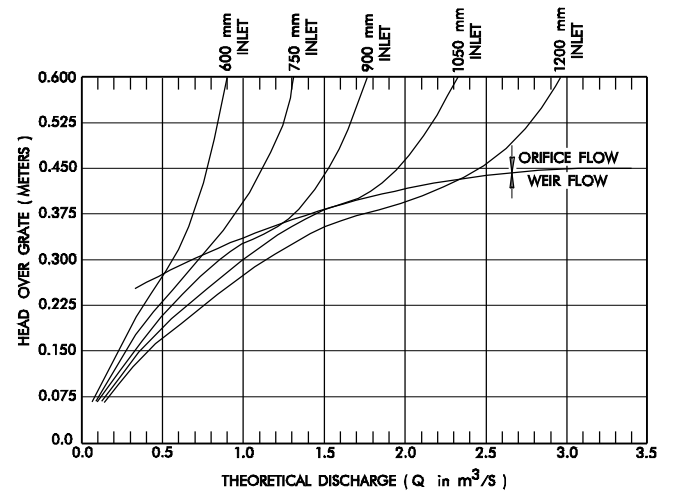


SECTION B - B

NOTE: THE 75 x 75 x 6.5 mm ANGLE PORTION OF THE GRATE SHALL HAVE 4 SLOTS LOCATED 90° APART.



DETAIL B



HYDRAULIC PERFORMANCE CHART

TO ALLOW FOR CLOGGING 60% THEORETICAL DISCHARGE IS THE RECOMMENDED FACTOR TO USE IN AREAS SUBJECT TO DEBRIS.

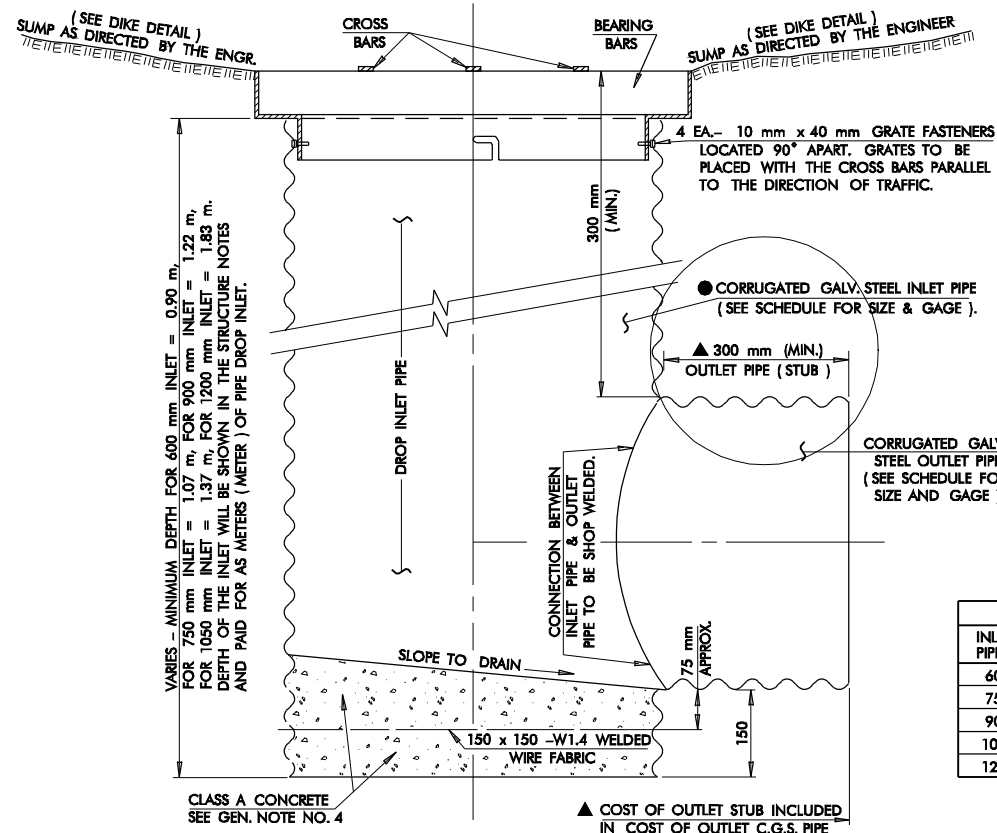
GENERAL NOTES

- ALL CONSTRUCTION AND MATERIAL REQUIREMENTS SHALL BE IN ACCORDANCE WITH THE 1999 METRIC STANDARD SPECIFICATIONS.
- FLAT BARS AND STRUCTURAL ANGLE SHALL CONFORM TO AASHTO M 183M SPECIFICATIONS OR OTHER APPROVED STEELS OF EQUAL QUALITY.
- GRATES TO BE SHOP WELDED TO CONFORM TO AWS STRUCTURAL WELDING CODE. FINISHED GRATE TO BE GALVANIZED IN ACCORDANCE WITH AASHTO M 111M SPECIFICATIONS.
- COST OF CLASS A CONCRETE AND WIRE FABRIC TO BE INCLUDED IN THE PRICE BID FOR THE CORRUGATED STEEL INLET PIPE.
- ▲ COST OF SHOP WELDING 300 mm OUTLET PIPE STUB TO DROP INLET PIPE TO BE INCLUDED IN PRICE BID FOR CORRUGATED STEEL INLET PIPE.

BASIS OF PAYMENT

ITEM NO.	ITEM	UNIT
611.06(L)	DROP INLET GRATE (mm SPD)	EACH
613.06(D)	● CORRUGATED GALVANIZED STEEL PIPE	METER

- DIMENSION OF INLET GRATE SHALL BE SPECIFIED.
● TYPE AND SIZE OF INLET PIPE, PLACED VERTICALLY, SHALL BE SPECIFIED.



SECTION A - A

NOTE: STANDARD METAL COUPLING BAND TO BE USED FOR CONNECTION OF 300 mm OUTLET STUB TO OUTLET METAL CULVERT.

DROP INLET SCHEDULE			
INLET PIPE ●	GAGE	OUTLET PIPE ▲	GAGE
600	14	450	16
750	14	750	14
900	12	900	14
1050	10	1050	12
1200	10	1200	12