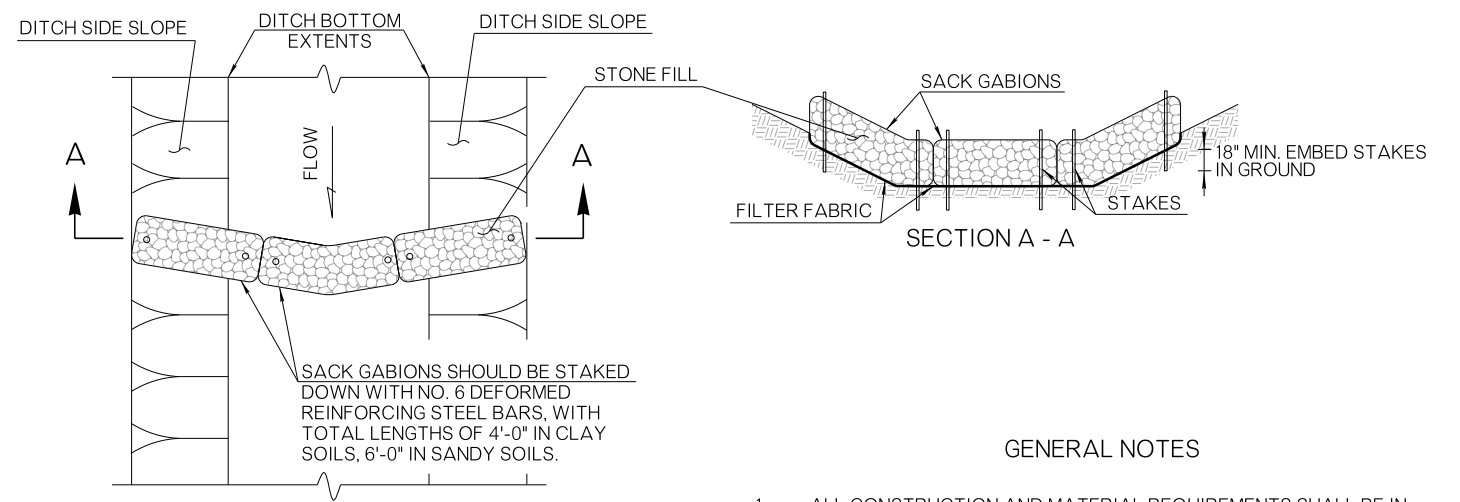


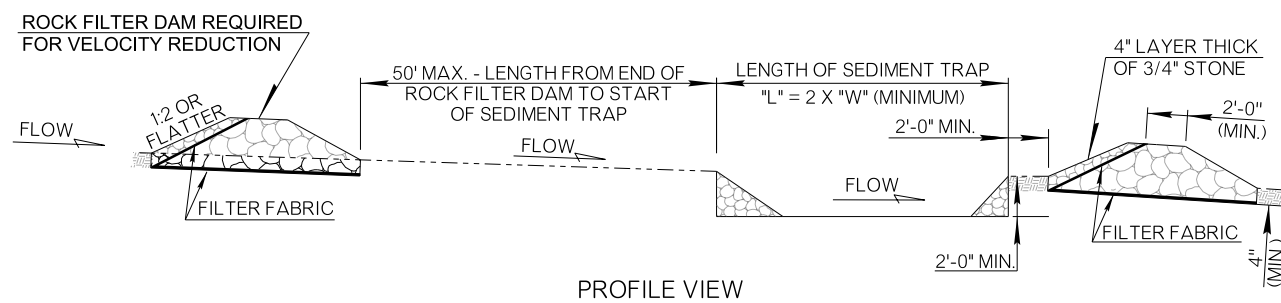
**ROCK FILTER DAM WITH SEDIMENT TRAP
PLAN VIEW**
CAN BE USED IMMEDIATELY UPSTREAM OF A SEDIMENT BASIN OR ANOTHER BMP, TO SETTLE LARGER SOIL PARTICLES AND EASE SEDIMENT LOAD IN SEDIMENT BASIN



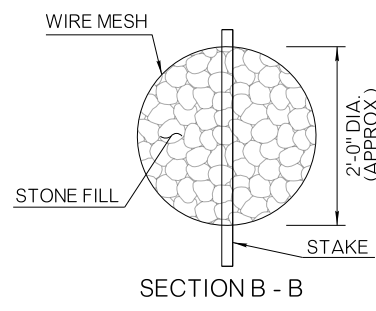
**DITCH CHANNEL
PLAN VIEW**

GENERAL NOTES

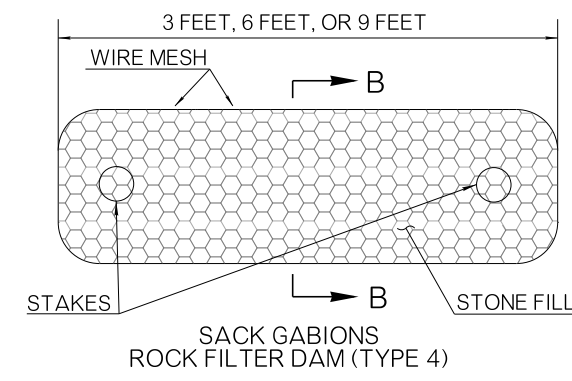
1. ALL CONSTRUCTION AND MATERIAL REQUIREMENTS SHALL BE IN ACCORDANCE WITH THE 2019 ODOT STANDARD SPECIFICATIONS.
2. MATERIALS SPECIFICATIONS FOR FILTER FABRIC, STONE FILL FOR GABIONS (ROCK) AND WIRE MESH, SHALL BE IN ACCORDANCE WITH THE STANDARD SPECIFICATION SECTIONS 712.02, 713.03 AND 732.09, RESPECTIVELY. STONE FILL CONVERSION FACTOR SHALL BE 150 - 160 LBS. PER CU. FT.
3. SPECIFIC DIMENSIONS OF ROCK FILTER DAMS AND/OR SEDIMENT TRAPS SHALL BE SHOWN ON THE PLANS.
4. ROCK FILTER DAM WITH SEDIMENT TRAP TO BE USED AT THE END, OR DOWNSLOPE OF SERIES OF ROCK FILTER DAMS AND IN AN EASILY ACCESSIBLE AREA TO REMOVE SEDIMENT. COST OF MATERIALS AND CONSTRUCTION OF SEDIMENT TRAP SHALL BE INCLUDED IN COST OF ROCK FILTER DAM.
5. ROCK FILTER DAM DITCH CHECKS SHOULD BE SPACED SO THAT THE ELEVATION OF THE TOE OF THE UPSTREAM DAM IS EQUAL TO THE ELEVATION OF THE CREST OF THE DOWNSTREAM DAM. THIS ALLOWS THE WATER BETWEEN EACH CHECK DAM TO POOL, GREATLY REDUCING THE FLOW VELOCITY.
6. ROCK FILTER DAM TYPES 2 AND 3 SHALL BE SECURED WITH WIRE MESH. THE ROCK SHALL BE PLACED ON THE MESH TO THE HEIGHT AND SLOPES SPECIFIED. THE MESH SHALL BE FOLDED AT THE UPSTREAM SIDE OVER THE ROCK AND TIGHTLY SECURED TO ITSELF ON THE DOWNSTREAM SIDE USING WIRE TIES OR HOG RINGS. IN CHANNEL USE, THE MESH SHALL BE SECURED OR STAKED TO THE CHANNEL BED PRIOR TO ROCK PLACEMENT.
7. ROCK FILTER DAMS SHALL BE EMBEDDED A MINIMUM OF 4 INCHES INTO THE EXISTING GROUND. FILTER FABRIC SHALL BE INSTALLED ON TOP OF EXISTING GROUND, BEFORE INSTALLING THE ROCK FILTER DAMS.
8. TOES OF SEDIMENT TRAP EXCAVATION ARE TO FIT THE DITCH BOTTOM.
9. MAXIMUM DRAINAGE AREA OF DISTURBED SOIL SHALL BE 5 ACRES AND LONGITUDINAL SLOPE SHALL NOT BE GREATER THAN 10%.
10. COST OF ROCK FILTER DAM (ALL TYPES) TO INCLUDE ALL MATERIAL AND LABOR REQUIRED FOR CONSTRUCTION AND MAINTENANCE. ROCK FILTER DAM TYPES 1, 2 OR 3 SHALL INCLUDE COST OF FILTER FABRIC. MAINTENANCE SHALL INCLUDE THE REMOVAL OF SEDIMENT WHEN HALF OF THE HEIGHT OF THE DAM HAS BEEN FILLED OR AS DIRECTED BY THE ENGINEER.



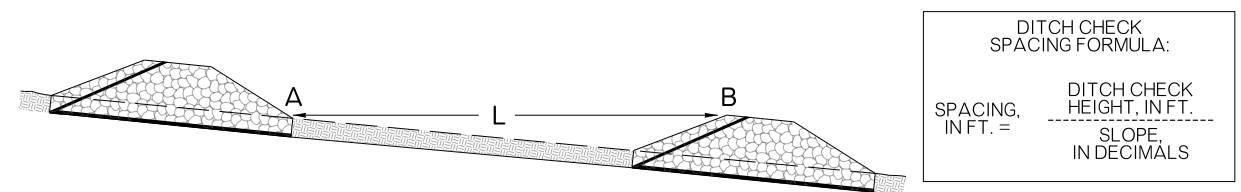
PROFILE VIEW



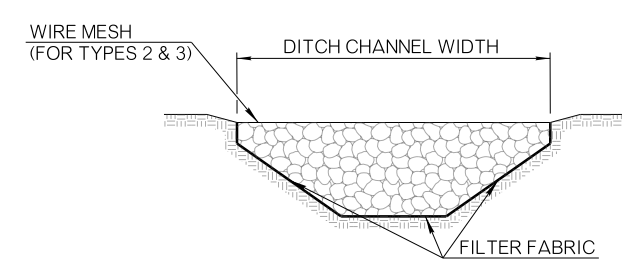
SECTION B - B



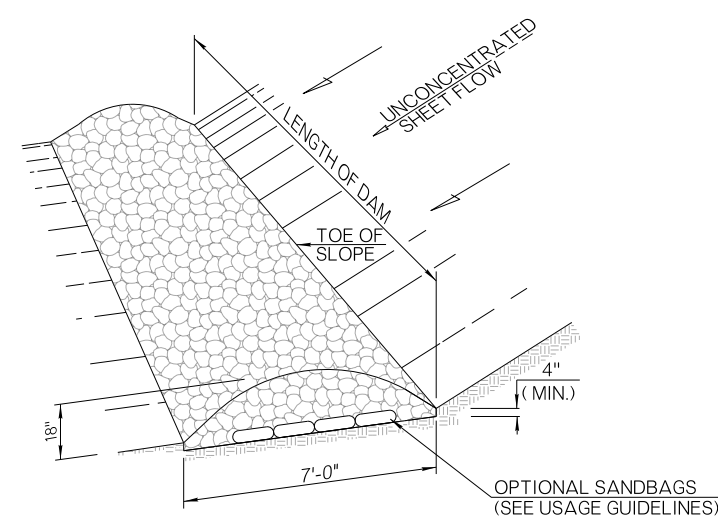
**SACK GABIONS
ROCK FILTER DAM (TYPE 4)**



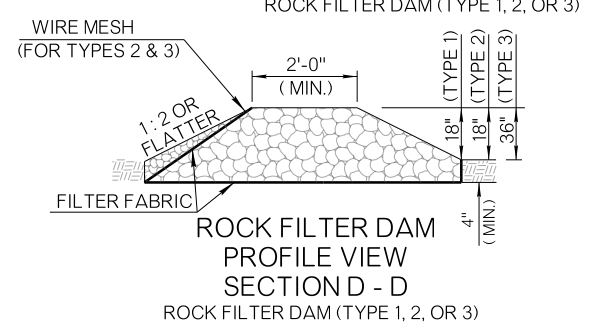
ROCK FILTER DAM DITCH CHECK
L = THE DISTANCE SUCH THAT POINTS A AND B ARE OF EQUAL ELEVATION



**ROCK FILTER DAM
CROSS SECTION
SECTION D - D
ROCK FILTER DAM (TYPE 1, 2, OR 3)**



ROCK FILTER DAM AT TOE OF SLOPE
CAN BE USED WHEN REINFORCED SILT FENCE IS INADEQUATE. USED WITH ROCK FILTER DAM (TYPE 1) ONLY. ESTIMATED QTY. = 0.28 C.Y. PER FOOT OF LENGTH.



**ROCK FILTER DAM
PROFILE VIEW
SECTION D - D
ROCK FILTER DAM (TYPE 1, 2, OR 3)**

ROCK FILTER DAM USAGE GUIDELINES

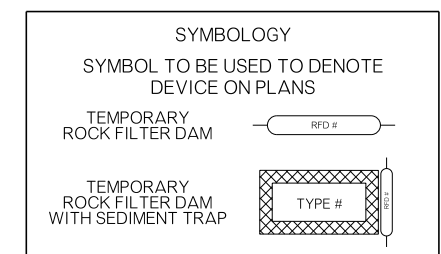
ROCK FILTER DAMS SHOULD BE USED WHEN SIGNIFICANT AMOUNTS OF SEDIMENT ARE ANTICIPATED, TO DISSIPATE THE ENERGY OF FLOWING WATER AND COLLECT SEDIMENT NEAR THE TOE OF SLOPES, AT UPSTREAM AND DOWNSTREAM DRAINAGE STRUCTURES, IN ROADWAY DITCHES AND IN SMALL CHANNELS, AS SHOWN IN PLANS OR AS DIRECTED BY THE ENGINEER.

TYPE 1 (18 IN. HIGH WITH NO WIRE MESH): TYPE 1 SHOULD BE USED AT THE TOE OF SLOPES, AROUND INLETS, IN SMALL DITCHES AND AT DIKE OR SWALE OUTLETS. THIS TYPE OF DAM IS RECOMMENDED TO CONTROL EROSION FROM A DRAINAGE AREA OF 5 ACRES OR LESS. TYPE 1 SHOULD NOT BE USED IN CONCENTRATED HIGH VELOCITY FLOWS (APPROX. 7-9 FT./SEC. OR MORE) IN WHICH ROCK WASH OUT MAY OCCUR. SANDBAGS MAY BE USED AT THE EMBEDDED FOUNDATION (4 IN. DEEP MIN.) FOR BETTER FILTERING EFFICIENCY OF LOW FLOWS.

TYPE 2 (18 IN. HIGH WITH WIRE MESH): TYPE 2 SHOULD BE USED IN DITCHES AND AT DIKES OR SWALE OUTLETS.

TYPE 3 (3 FT. HIGH WITH WIRE MESH): TYPE 3 SHOULD BE USED IN CHANNEL FLOW AND SHOULD BE SECURED TO THE CHANNEL BED.

TYPE 4 (SACK GABIONS): TYPE 4 SHOULD BE USED IN DITCHES AND SMALLER CHANNELS TO FORM AN EROSION CONTROL DAM.



BASIS OF PAYMENT		
ITEM NO.	ITEM	UNIT
221(F)	TEMPORARY ROCK FILTER DAM (TYPE 1)	CY
221(F)	TEMPORARY ROCK FILTER DAM (TYPE 2)	CY
221(F)	TEMPORARY ROCK FILTER DAM (TYPE 3)	CY
221(F)	TEMPORARY ROCK FILTER DAM (TYPE 4)	CY

APPROVED BY ROADWAY ENGINEER: *R. G. W. S.* DATE: 6/24/22
ROADWAY DESIGN DIVISION STANDARD

TEMPORARY ROCK FILTER DAM APPLICATIONS
OKLAHOMA Transportation
2019 SPECIFICATIONS