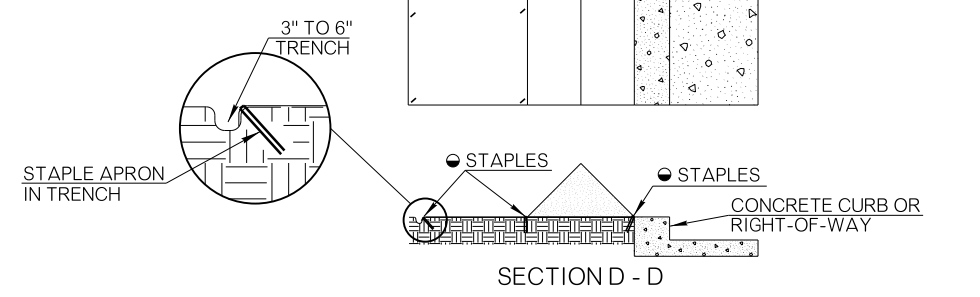
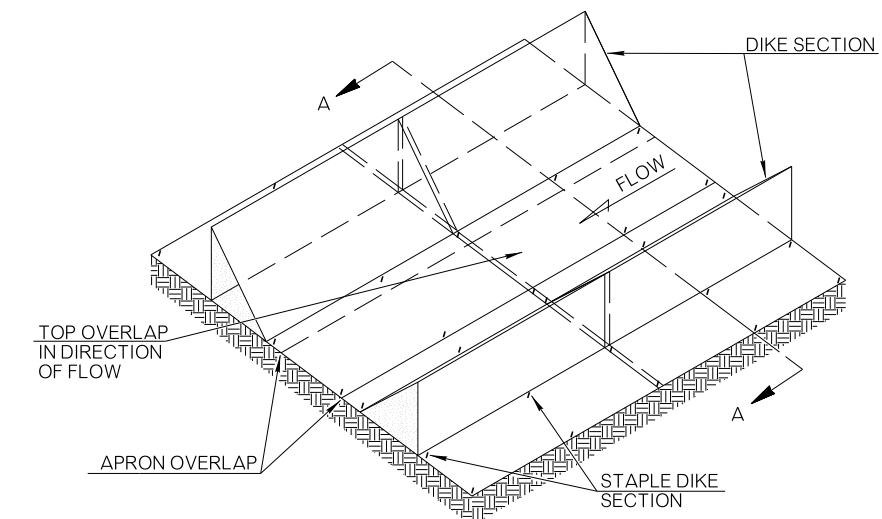


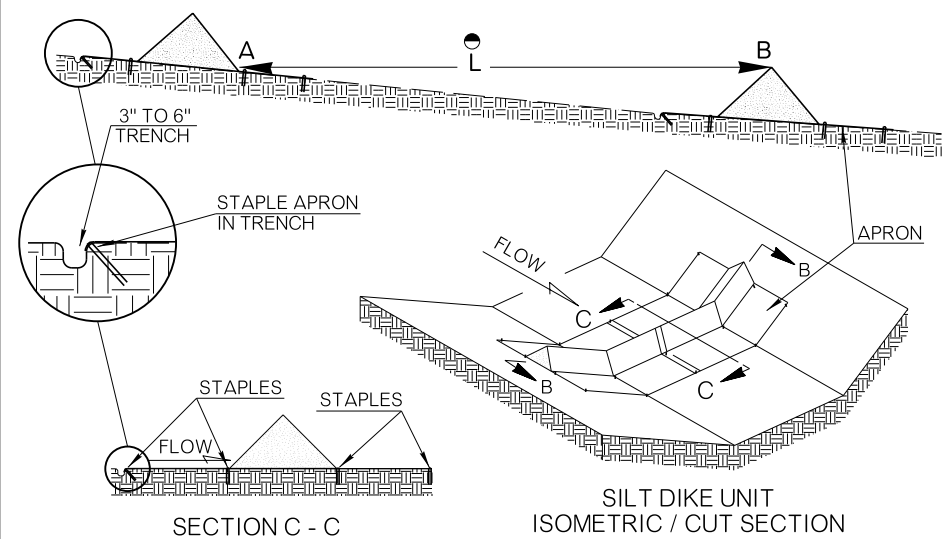
TEMPORARY SILT DIKE INSTALLATION AS DIVERSION DIKE AND / OR DITCH CHECK



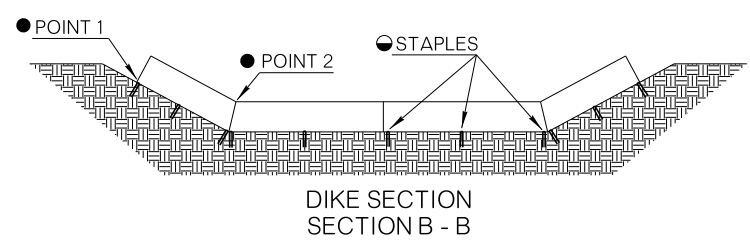
TEMPORARY SILT DIKE INSTALLATION AS PERIMETER CONTROL



TEMPORARY SILT DIKE INSTALLATION AS TEMPORARY DITCH LINER



SILT DIKE UNIT ISOMETRIC / CUT SECTION

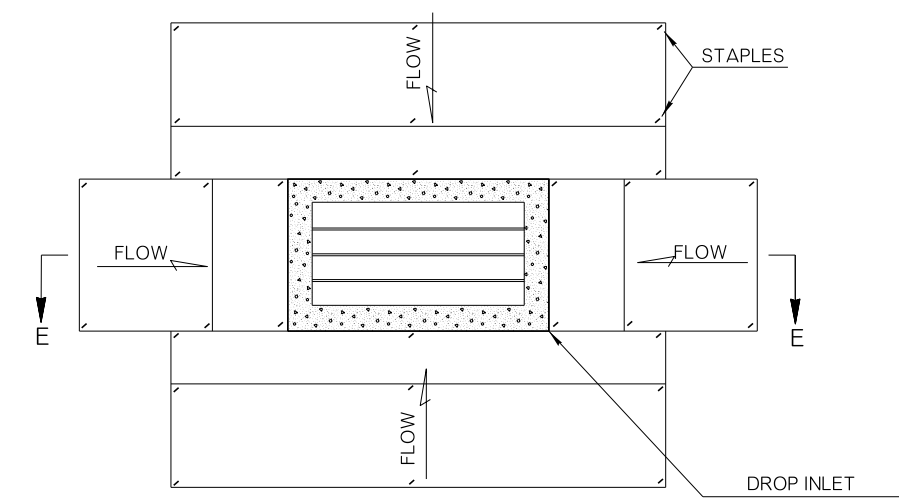


TEMPORARY SILT DIKE INSTALLATION AS ROADWAY DITCH OR DRAINAGE DITCH CHECK

- POINT "1" MUST BE HIGHER THAN POINT "2" TO ENSURE THAT WATER FLOWS OVER THE DIKE AND NOT AROUND THE ENDS.
- STAPLES SHALL BE PLACED WHERE THE UNITS OVERLAP AND IN THE CENTER OF THE UNIT AS SHOWN ON THE DIAGRAM.
- L = THE DISTANCE SUCH THAT POINTS 'A' AND 'B' ARE OF EQUAL ELEVATION

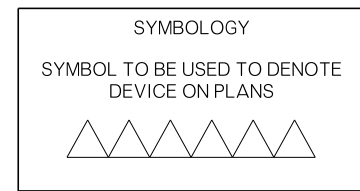
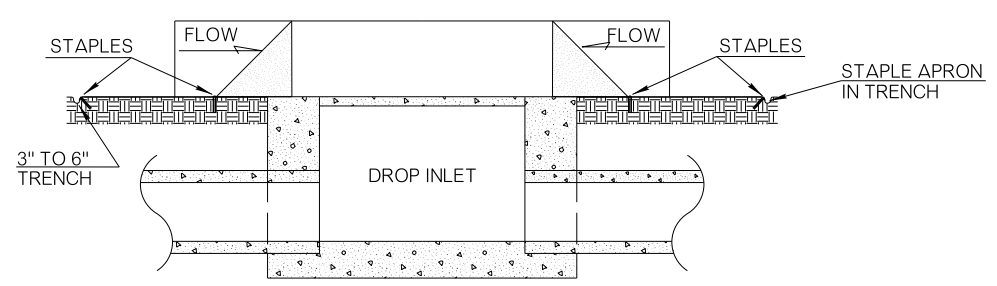
DITCH CHECK SPACING FORMULA:

$$\text{SPACING, IN FT.} = \frac{\text{DITCH CHECK HEIGHT, IN FT.}}{\text{SLOPE, IN DECIMALS}}$$



TEMPORARY SILT DIKE INSTALLATION FOR DROP INLETS

NOTE: SILT DIKE SHOULD ONLY BE USED FOR DROP INLETS IN SUMP LOCATIONS. FOR DROP INLETS ON GRADE, USE SEDIMENT TRAPS OR OTHER CONTROLS.



- GENERAL NOTES
- ALL CONSTRUCTION AND MATERIAL REQUIREMENTS SHALL BE IN ACCORDANCE WITH THE 2019 ODOT STANDARD SPECIFICATIONS.
  - THIS WORK SHALL CONSIST OF FURNISHING, INSTALLING, AND MAINTAINING THE TEMPORARY SILT DIKE. THE DIKES SHALL BE USED AS A CONTINUOUS LINE BARRIER AT THE TOE OF SLOPE OR ACROSS THE ROADWAY DITCH TO CONTAIN SEDIMENT AND MINIMIZE EROSION, OR AS DIRECTED BY THE ENGINEER. THESE DIKES SHALL BE INSTALLED AND LOCATED AS SOON AS CONSTRUCTION WILL ALLOW OR AS DIRECTED BY THE ENGINEER.
  - TEMPORARY SILT DIKE SHALL BE TRIANGULAR SHAPED HAVING A HEIGHT OF AT LEAST 8 TO 10 INCHES IN THE CENTER WITH EQUAL SIDES AND A 16 TO 20 INCH BASE. THE TRIANGULAR SHAPED INNER MATERIAL SHALL BE URETHANE FOAM MEETING THE REQUIREMENTS FOR ASTM D3574. THE OUTER COVER SHALL BE A WOVEN GEOTEXTILE FABRIC PLACED AROUND THE INNER MATERIAL AND ALLOWED TO EXTEND BEYOND BOTH SIDES OF THE TRIANGLE 24 INCHES TO 36 INCHES. THIS FABRIC SHOULD BE MILDEW RESISTANT, ROT-PROOF RESISTANT TO HEAT AND ULTRAVIOLET RADIATION, AND MEETING REQUIREMENTS FOR SEDIMENT CONTROL IN AASHTO M 288. THE DIKES SHALL BE ATTACHED TO THE GROUND WITH WIRE STAPLES. THE STAPLES SHALL BE NO. 11 GAUGE WIRE AND BE AT LEAST 6 TO 8 INCHES LONG. STAPLES SHALL BE PLACED AS SHOWN ON THESE DETAILS.
  - SILT DIKES ARE FURNISHED IN 7 FOOT INCREMENTS. TOP OVERLAPS SHALL BE INSTALLED IN THE DIRECTION OF FLOW.
  - SILT DIKE DITCH CHECKS SHOULD BE SPACED SO THAT THE ELEVATION OF THE TOE OF THE UPSTREAM DEVICE IS EQUAL TO THE ELEVATION OF THE CREST OF THE DOWNSTREAM DEVICE. THIS ALLOWS THE WATER BETWEEN EACH DITCH CHECK TO POOL, GREATLY REDUCING THE FLOW VELOCITY.
  - ACCEPTED TEMPORARY SILT DIKE, MEASURED AS PROVIDED ABOVE, WILL BE PAID FOR AT THE CONTRACT UNIT PRICE BID FOR TEMPORARY SILT DIKE. PRICE BID WILL INCLUDE THE COST OF FURNISHING THE DIKES, INSTALLING, MAINTAINING AND REMOVAL WHEN DIRECTED BY THE ENGINEER.

| BASIS OF PAYMENT |                     |      |
|------------------|---------------------|------|
| ITEM NO.         | ITEM                | UNIT |
| 221(E)           | TEMPORARY SILT DIKE | LF   |

APPROVED BY ROADWAY ENGINEER: *R. G. W.* DATE: 6/24/22

ROADWAY DESIGN DIVISION STANDARD



TEMPORARY SILT DIKE APPLICATIONS