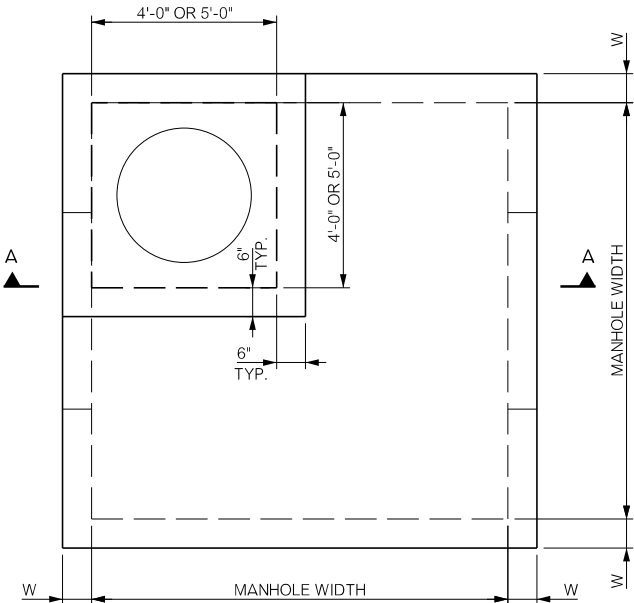


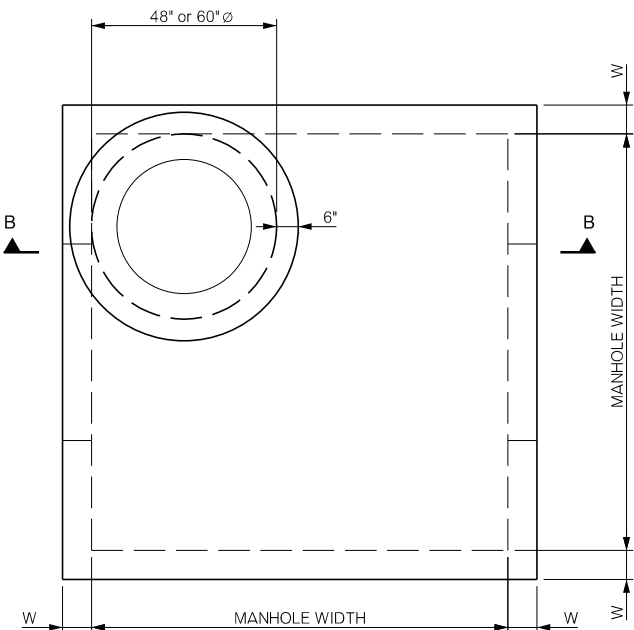
DESIGN DATA

MATERIAL:
CLASS A CONCRETE
REINFORCING STEEL
LOADING:
HL-93
DESIGN:
AASHTO LRFD BRIDGE DESIGN SPECIFICATIONS, LATEST EDITION
ASTM C890
ASTM C913

$f'_c = 4 \text{ KSI}$
 $f_y = 60 \text{ KSI}$



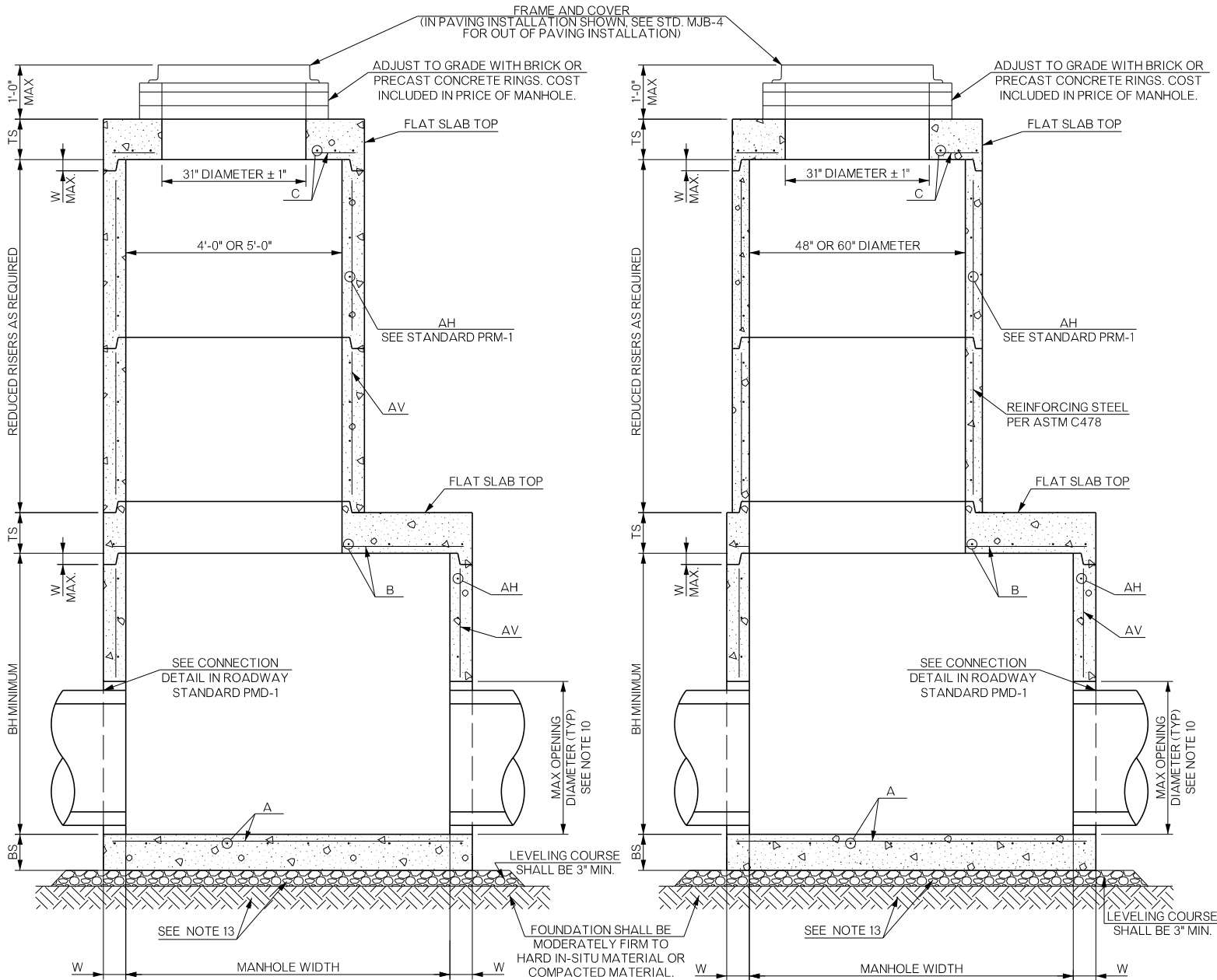
PLAN VIEW - SQUARE REDUCED RISER
SQUARE MANHOLE, TYPE I



PLAN VIEW - ROUND REDUCED RISER
SQUARE MANHOLE, TYPE II

TO INCLUDE A REDUCED RISER, DEPTH OF MANHOLE
MUST BE A MINIMUM OF 52 INCHES.

DEPTH OF UP TO, AND INCLUDING, 6' SHALL BE
INCLUDED IN PRICE BID PER MANHOLE. ANY
DEPTH ABOVE 6' TO A MAXIMUM DEPTH OF 25',
SHALL BE PAID FOR AS 'ADDITIONAL DEPTH.'



TYPE I
SECTION A-A
SQUARE REDUCED RISER OPTION
SHOWING FLAT SLAB TOP.

TYPE II
SECTION B-B
ROUND REDUCED RISER OPTION
SHOWING FLAT SLAB TOP.
CONE MAY BE USED.

SCHEDULE OF DIMENSIONS AND REINFORCING STEEL									
MANHOLE WIDTH	DEPTH ≤ 25 FT.								
	BH	BS	TS	W	A	B	C	AH	AV
48"	12"	6"	6"	6"	0.49 IN ² /FT	-	0.28 IN ² /FT	0.24 IN ² /FT	0.11 IN ² /FT
60"	36"	6"	8"	6"	0.63 IN ² /FT	0.41 IN ² /FT	0.30 IN ² /FT	0.36 IN ² /FT	0.11 IN ² /FT
72"	36"	6"	8"	8"	0.61 IN ² /FT	0.48 IN ² /FT	0.41 IN ² /FT	0.34 IN ² /FT	0.11 IN ² /FT

VALUES LISTED IN "SCHEDULE OF DIMENSIONS AND REINFORCING STEEL"
ARE MINIMUM VALUES. STRUCTURES THAT PROVIDE LARGER VALUES
THAN THOSE SHOWN WILL BE CONSIDERED ACCEPTABLE.

THE DETAILS SHOWN ON THIS SHEET ARE FOR STORM SEWER APPLICATIONS
ONLY AND ARE NOT INTENDED FOR SANITARY SEWER APPLICATIONS.

GENERAL NOTES

- ALL CONSTRUCTION AND MATERIAL REQUIREMENTS SHALL BE IN ACCORDANCE WITH THE 2019 ODOT STANDARD SPECIFICATIONS.
- FOR DETAILS OF FRAME AND COVER, SEE CURRENT VERSION OF ROADWAY STANDARD MFC-5. PRICE BID OF MANHOLE SHALL INCLUDE PAYMENT FOR THESE ITEMS AND ALL OTHER ITEMS AND LABOR, NECESSARY TO COMPLETE THE INSTALLATION. PRICE BID OF ADDITIONAL DEPTH SHALL INCLUDE PAYMENT FOR ALL MATERIAL AND LABOR PERTAINING ONLY TO THE ADDITIONAL DEPTH, NECESSARY TO COMPLETE ITS INSTALLATION.
- PRECAST ROUND MANHOLES MAY BE SUBSTITUTED PER THE MANUFACTURER'S RECOMMENDATION. SEE ROADWAY STANDARD PRM-1 FOR DESIGN AND INSTALLATION DETAILS.
- THERE SHALL BE A MINIMUM DISTANCE OF 6 INCHES BETWEEN AN OPENING AND ANY JOINT.
- PROVIDE LIFTING DEVICES IN CONFORMANCE WITH THE MANUFACTURER'S RECOMMENDATIONS.
- PROVIDE GRADE 60 REINFORCING STEEL CONFORMING TO ASTM A615 OR EQUIVALENT AREA OF WELDED WIRE REINFORCING CONFORMING TO ASTM A1064.
- PROVIDE A MINIMUM CLEAR COVER OF 1½ INCHES TO REINFORCING STEEL.
- WALLS OR SLABS WITH A THICKNESS OF 8 INCHES OR GREATER REQUIRE A SECONDARY LAYER OF REINFORCING STEEL. PROVIDE AN AREA OF REINFORCING STEEL EQUAL TO 0.11 SQ. IN. / FT EACH WAY IN THE SECONDARY LAYER.
- DESIGN TONGUE AND GROOVE JOINTS FOR FULL CLOSURE ON RISER SHOULDERS, CONICAL TOPS, AND FLAT SLABS. MINIMUM SPIGOT DEPTH IS ¾ INCHES.
- MAXIMUM OPENING SHALL BE 4 INCHES LARGER THAN OUTSIDE PIPE DIAMETER. REFER TO ROADWAY DESIGN STANDARD PMD-1 FOR PIPE CONNECTION MATERIAL.
- SEAL TONGUE AND GROOVE JOINTS WITH PREFORMED OR BULK MASTIC IN CONFORMANCE WITH THE MANUFACTURER'S RECOMMENDATIONS. TONGUE AND GROOVE JOINTS MAY BE GROUTED NO MORE THAN 1 INCH BETWEEN EACH SECTIONS OR ½ THE JOINT DEPTH, WHICHEVER IS GREATER. JOINT SEALING SHALL BE INCLUDED IN THE COST OF THE MANHOLE.
- DO NOT GROUT RUBBER GASKET JOINTS WITHOUT THE MANUFACTURER'S RECOMMENDATIONS.
- THE FOUNDATION SHALL BE STABILIZED OR REMOVED AND REPLACED WITH FIRM AND STABLE FOUNDATION MATERIAL. A MINIMUM 3 INCHES THICK LEVELING COURSE SHALL BE PROVIDED BELOW THE BASE AREA OF THE MANHOLE AND EXTEND 6 INCHES BEYOND THE BASE AREA. THE LEVELING COURSE SHALL BE CONSTRUCTED WITH AGGREGATE BASE TYPE A. COSTS ASSOCIATED WITH THE FOUNDATION AND LEVELING COURSES SHALL BE INCLUDED IN THE PRICE BID OF THE MANHOLE.
- OPENINGS IN FLAT SLAB TOPS SHALL BE ADDITIONALLY REINFORCED WITH A MINIMUM OF 0.20 SQ. IN. OF STEEL AT 90 DEGREES.
- REFER TO PROJECT PLAN SHEETS FOR NUMBER, LOCATION, AND SIZE OF PIPE.
- FLEXURAL REINFORCING STEEL SHALL NOT EXCEED SPACING OF 9 INCHES CENTER TO CENTER.
- SEE CURRENT VERSION OF ROADWAY STANDARD PRM-1 FOR DIMENSIONS AND REINFORCING REQUIREMENTS FOR PRECAST CONCRETE ROUND MANHOLES, WITH AND WITHOUT ROUND REDUCED RISER SECTIONS.
- THE ENGINEER MAY SPECIFY THE USE OF STEPS OR LADDERS AND SHALL CONFORM TO ASTM C478.
- THE ORIENTATION OF THE SPIGOT IS SHOWN FOR INFORMATIONAL PURPOSES ONLY AND IS AT THE DISCRETION OF THE MANUFACTURER.

BASIS OF PAYMENT		
ITEM NO.	ITEM	UNIT
611(A)	PRECAST CONC SQ 4' WIDE MANHOLE	EACH
611(A)	PRECAST CONC SQ 5' WIDE MANHOLE	EACH
611(A)	PRECAST CONC SQ 6' WIDE MANHOLE	EACH
611(B)	ADD'L DEPTH PRECAST SQ 4' MANHOLE	VF
611(B)	ADD'L DEPTH PRECAST SQ 5' MANHOLE	VF
611(B)	ADD'L DEPTH PRECAST SQ 6' MANHOLE	VF

APPROVED BY
ROADWAY ENGINEER: *R. D. W.* DATE: 1/8/2025
ROADWAY DESIGN DIVISION STANDARD



PRECAST SQUARE MANHOLE

2019 SPECIFICATIONS

PSM-1	3
	R-51