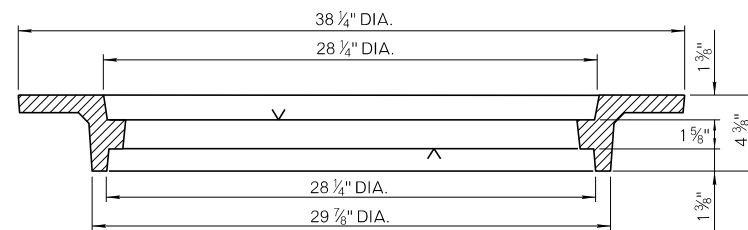
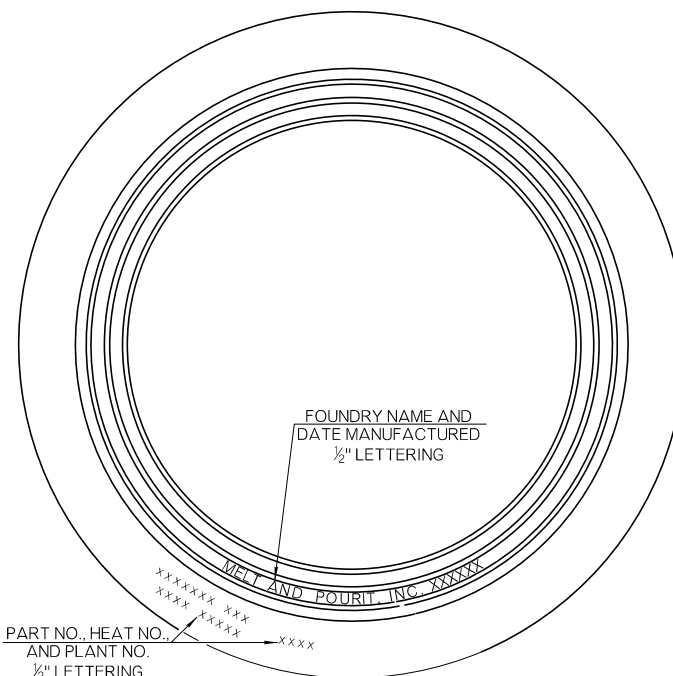


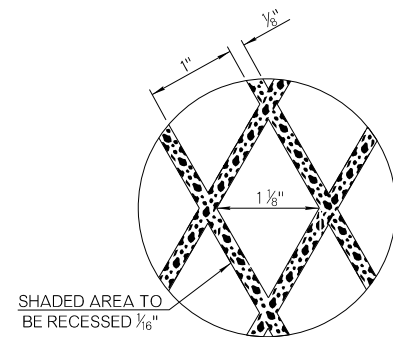
TOP SIDE OF FRAME FOR  
OUT OF PAVING INSTALLATION



SECTION THRU FRAME, WHEN INSTALLED OUT OF PAVING

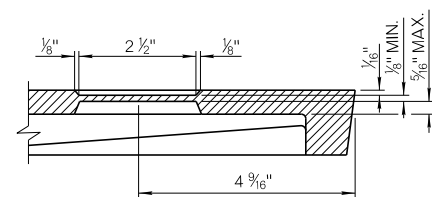


TOP SIDE OF FRAME FOR  
IN PAVING INSTALLATION

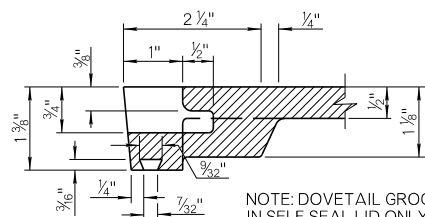


CHECKERED DESIGN DETAIL

\*NOTE: FRAME TO BE TURNED OVER  
WHEN INSTALLED INSIDE OF PAVING.



SECTION THRU  
OVAL KNOCKOUT

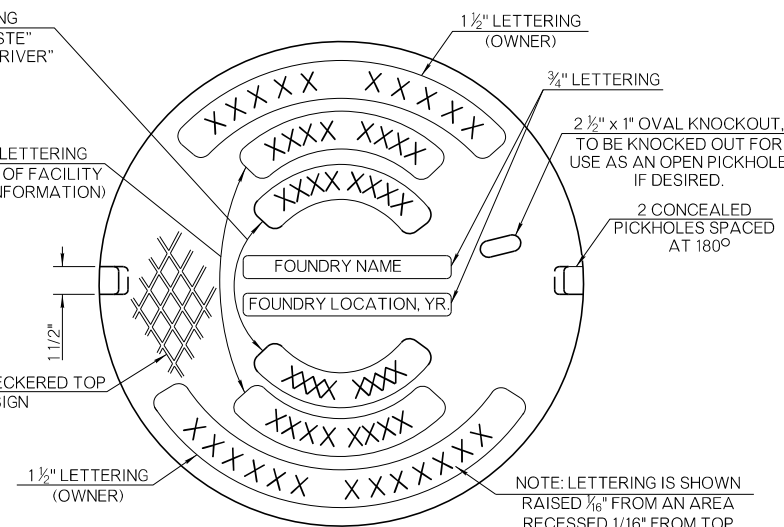


SECTION THRU PICKHOLE

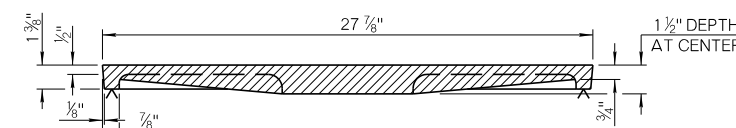
1 1/8\" LETTERING  
"DUMP NO WASTE"  
AND "DRAINS TO RIVER"

1 1/8\" LETTERING  
(TYPE OF FACILITY  
AND INFORMATION)

1 1/2\" LETTERING  
(OWNER)

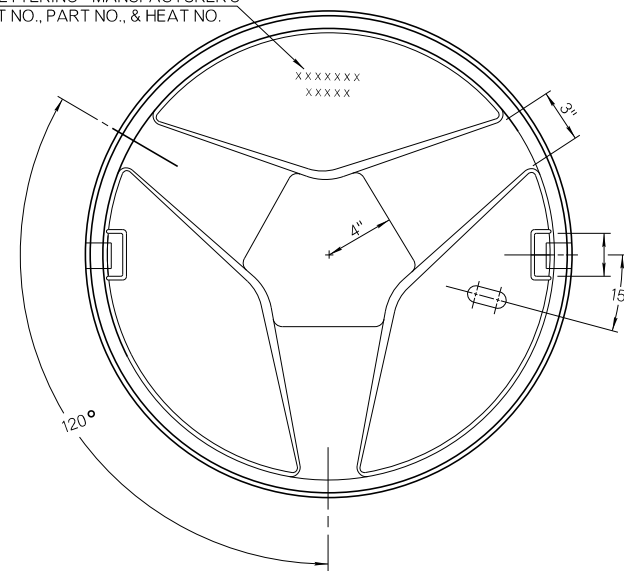


TOP SIDE OF COVER

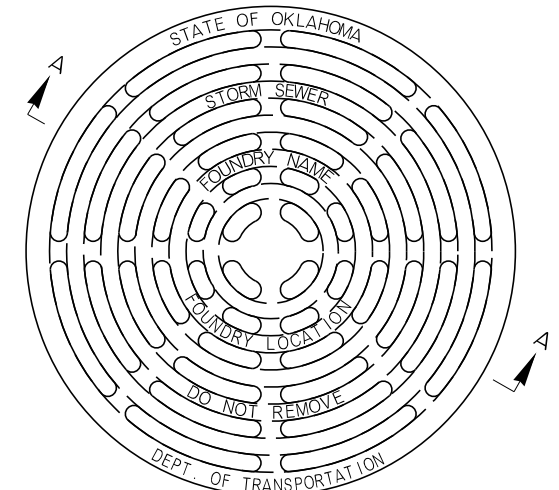


SECTION THRU COVER

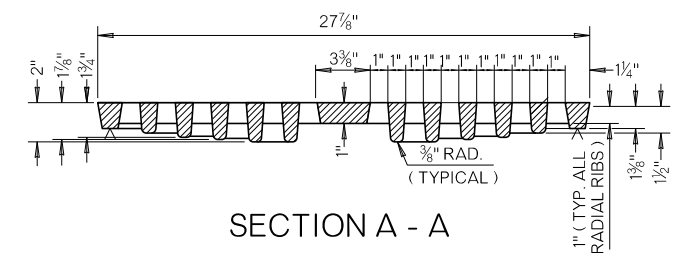
3/4\" LETTERING - MANUFACTURER'S  
PLANT NO., PART NO., & HEAT NO.



BOTTOM SIDE OF COVER



TOP SIDE OF COVER GRATE



SECTION A - A

#### GENERAL NOTES

1. ALL CONSTRUCTION AND MATERIAL REQUIREMENTS SHALL BE IN ACCORDANCE WITH THE 2019 ODOT STANDARD SPECIFICATIONS.
2. COVERS WILL BE FURNISHED WITH A PLAIN SEAT, UNLESS A SELF-SEAL SEAT OR A LOCKING DEVICE IS SPECIFIED IN THE PLANS.
3. LETTERING TO DENOTE OWNERSHIP AND TYPE OF USAGE WILL BE AT THE DISCRETION OF THE OWNER.
4. FRAMES AND COVERS SHALL BE CAST STEEL, DUCTILE IRON, OR GRAY IRON CONFORMING TO SECTION 725 OF THE SPECIFICATIONS.
5. MANHOLE FRAMES, COVERS AND COVER GRATES INSTALLED DURING ORIGINAL CONSTRUCTION SHALL BE INCLUDED IN THE CONTRACT UNIT PRICE OF THE ORIGINAL MANHOLE.

NOTE: MACHINING (SYMBOL  $\wedge$ ) MAY BE ACCOMPLISHED BY MILLING OR BY LEVEL GRINDING.

BASIS OF PAYMENT		
ITEM NO.	ITEM	UNIT
611 (C)	REPLACEMENT OF MANHOLE FRAME AND COVER	EA
611 (D)	REPLACEMENT MANHOLE FRAME	EA
611 (E)	REPLACEMENT OF MANHOLE COVER	EA
611 (F)	REPLACEMENT OF MANHOLE COVER GRATE	EA

APPROVED BY  
ROADWAY ENGINEER: *[Signature]* DATE: 4/1/2025  
ROADWAY DESIGN DIVISION STANDARD



#### MANHOLE FRAME AND COVER

2019 SPECIFICATIONS

MFC-5 2

R-48