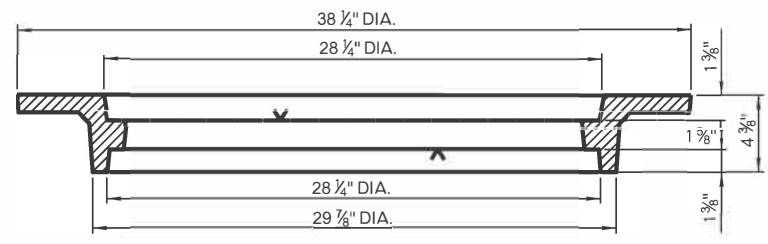
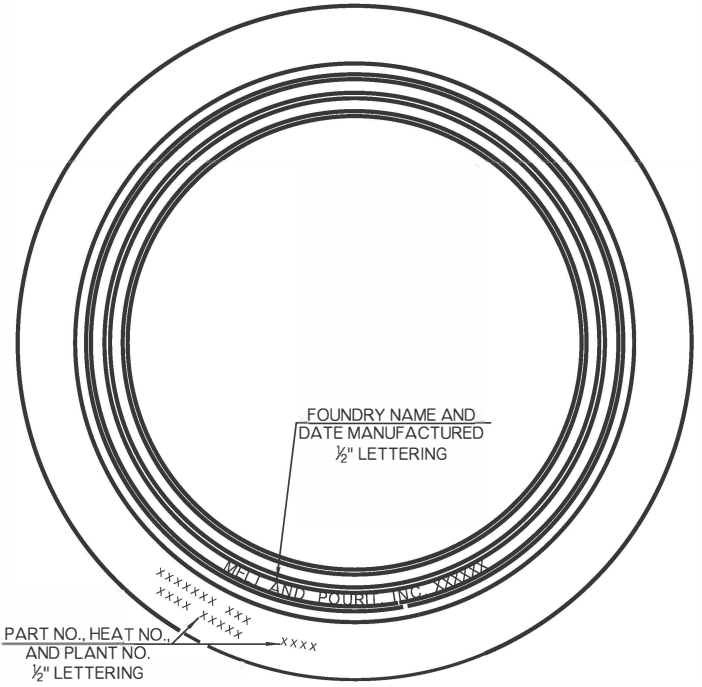


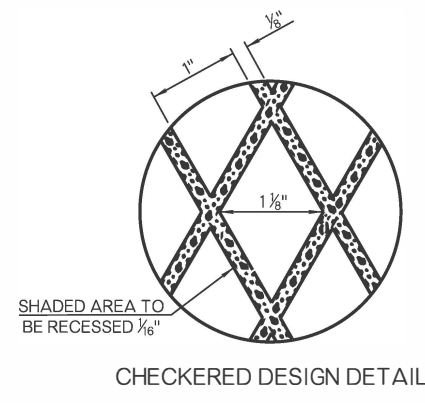
TOP SIDE OF FRAME FOR OUT OF PAVING INSTALLATION



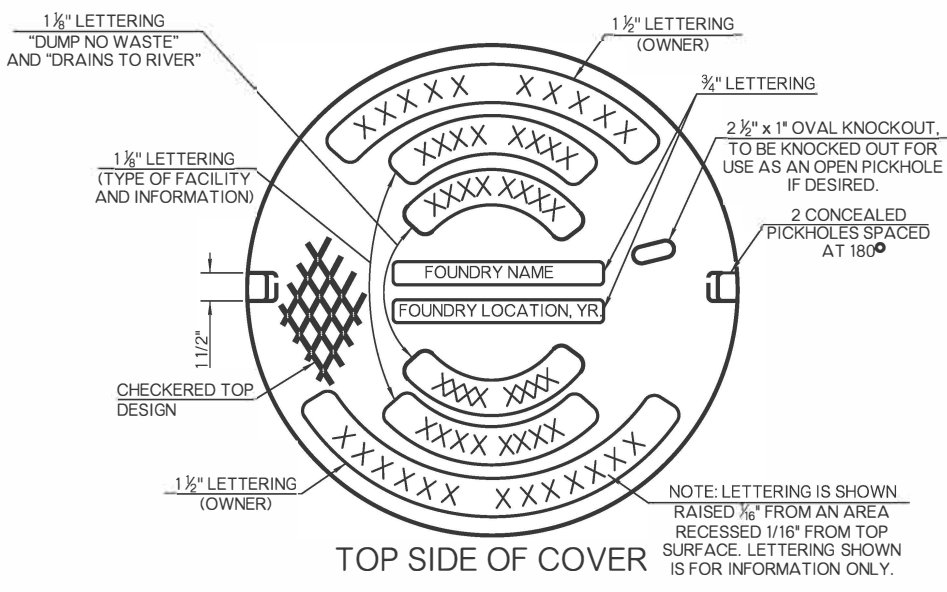
REVERSIBLE FRAME



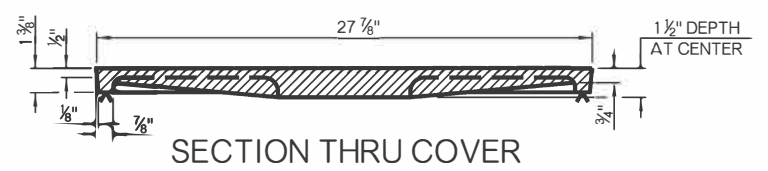
TOP SIDE OF FRAME FOR IN PAVING INSTALLATION



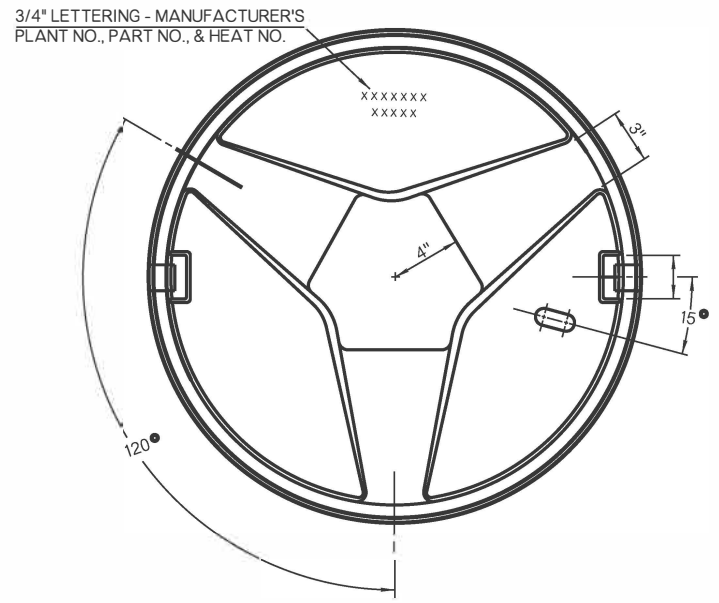
CHECKERED DESIGN DETAIL



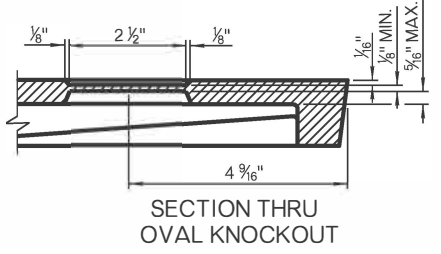
TOP SIDE OF COVER



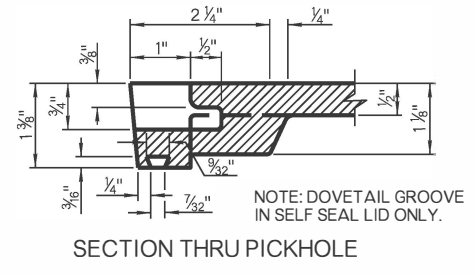
SECTION THRU COVER



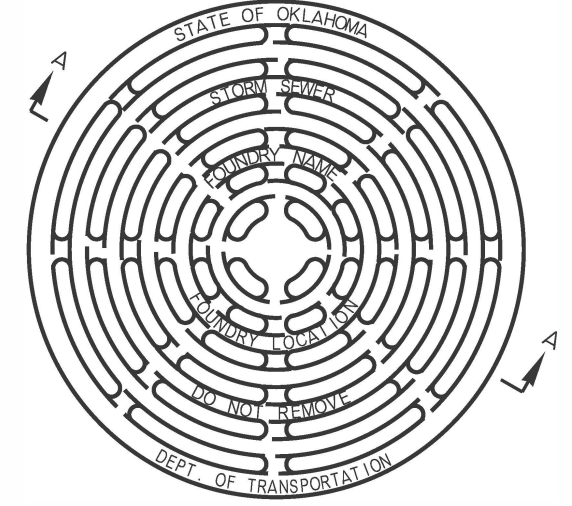
BOTTOM SIDE OF COVER



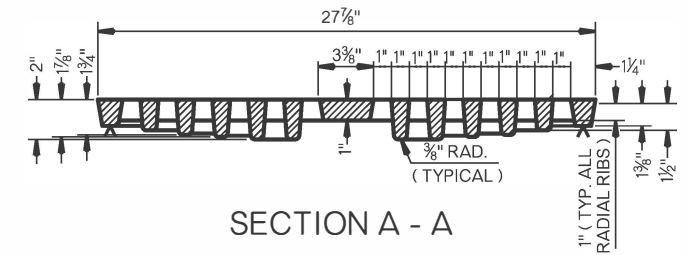
SECTION THRU OVAL KNOCKOUT



SECTION THRU PICKHOLE



TOP SIDE OF COVER GRATE



SECTION A - A

- GENERAL NOTES**
1. ALL CONSTRUCTION AND MATERIAL REQUIREMENTS SHALL BE IN ACCORDANCE WITH THE 2019 ODOT STANDARD SPECIFICATIONS.
 2. COVERS WILL BE FURNISHED WITH A PLAIN SEAT, UNLESS A SELF-SEAL SEAT OR A LOCKING DEVICE IS SPECIFIED IN THE PLANS.
 3. LETTERING TO DENOTE OWNERSHIP AND TYPE OF USAGE WILL BE AT THE DISCRETION OF THE OWNER.
 4. FRAMES AND COVERS SHALL BE CAST STEEL, DUCTILE IRON, OR GRAY IRON CONFORMING TO SECTION 725 OF THE SPECIFICATIONS.
 5. MANHOLE FRAMES, COVERS AND COVER GRATES INSTALLED DURING ORIGINAL CONSTRUCTION SHALL BE INCLUDED IN THE CONTRACT UNIT PRICE OF THE ORIGINAL MANHOLE.

NOTE: MACHINING (SYMBOL ▲) MAY BE ACCOMPLISHED BY MILLING OR BY LEVEL GRINDING.

BASIS OF PAYMENT		
ITEM NO.	ITEM	UNIT
611 (C)	REPLACEMENT OF MANHOLE FRAME AND COVER	EA
611 (D)	REPLACEMENT MANHOLE FRAME	EA
611 (E)	REPLACEMENT OF MANHOLE COVER	EA
611 (F)	REPLACEMENT OF MANHOLE COVER GRATE	EA

APPROVED BY ROADWAY ENGINEER: *[Signature]* DATE: 6/30/22
ROADWAY DESIGN DIVISION STANDARD