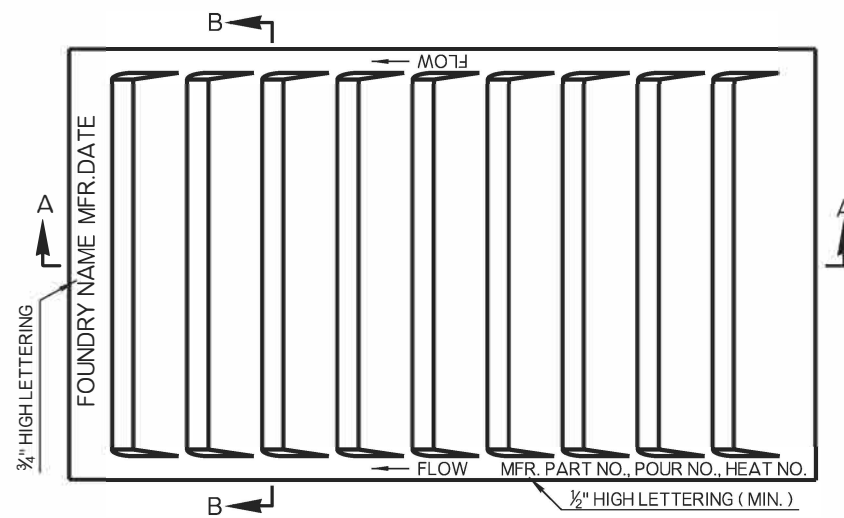


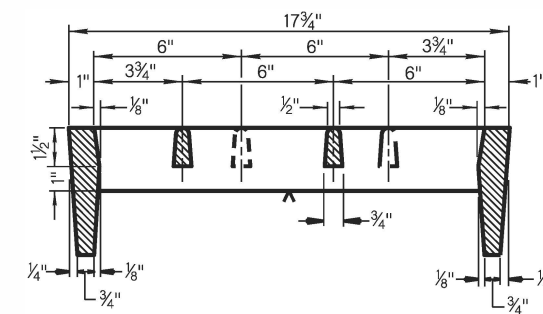
PLAN - RIBBED VANE GRATE  
(SHOWN FOR TRENCH INSTALLATION)

TYPE RVG-F ( FRAME INSTALLATION )  
TYPE RVG-T ( TRENCH INSTALLATION )

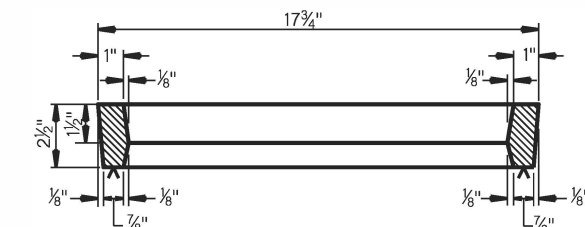


PLAN - VANE GRATE  
(SHOWN FOR FRAME INSTALLATION)

TYPE VG-F ( FRAME INSTALLATION )  
TYPE VG-T ( TRENCH INSTALLATION )



SECTION B - B (TRENCH INSTALLATION)

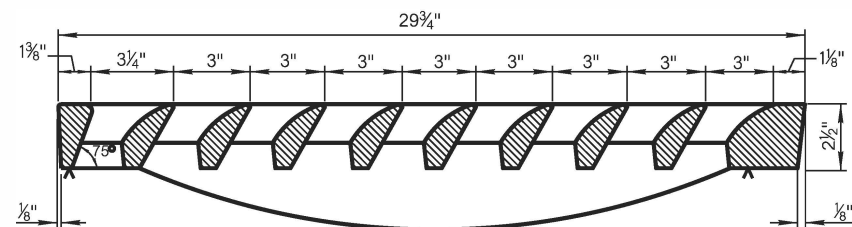


SECTION B - B (FRAME INSTALLATION)

GENERAL NOTES

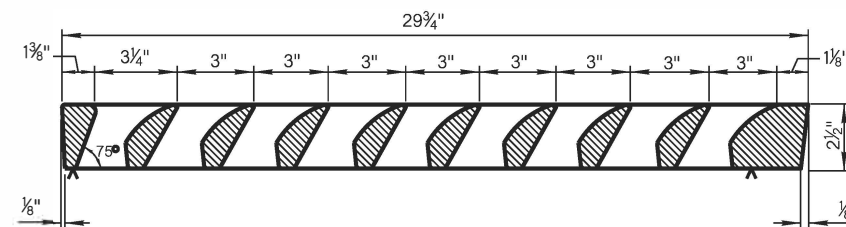
1. ALL CONSTRUCTION AND MATERIAL REQUIREMENTS SHALL BE IN ACCORDANCE WITH THE 2019 ODOT STANDARD SPECIFICATIONS.
2. FRAME TYPE GRATES SHALL NOT TO BE USED IN TRENCH INSTALLATIONS.
3. GRATES SHALL BE INSTALLED IN THE FRAME WITH FLOW ARROW POINTING DOWNSTREAM OR TOWARD THE LOW POINT IN A SUMP.
4. ALL LETTERING IS TO BE RECESSED 1/16". ALL INFORMATION REQUIRED SHALL BE SUFFICIENT FOR IDENTIFICATION, AS SHOWN.
5. GRATES SHALL BE CAST STEEL, DUCTILE IRON, OR GRAY IRON CONFORMING TO SECTION 725 OF THE SPECIFICATIONS.
6. ALL GRATES INSTALLED IN A TRENCH FRAME ( STD. SSIF-5 ) SHALL HAVE A BOLTED HOLD-DOWN FEATURE. IF INSTALLED IN AN ANGLE IRON FRAME OR RESTING ON A CONCRETE SHOULDER, A POSITIVE HOLD-DOWN FEATURE, APPROVED BY THE ENGINEER, SHALL BE USED.
7. INLET FRAMES, GRATES AND COVER GRATES INSTALLED DURING ORIGINAL CONSTRUCTION SHALL BE INCLUDED IN THE CONTRACT UNIT PRICE OF THE ORIGINAL INLET OR MANHOLE.

NOTE: MACHINING ( SYMBOL ▲ ) MAY BE ACCOMPLISHED BY MILLING OR BY LEVEL GRINDING.

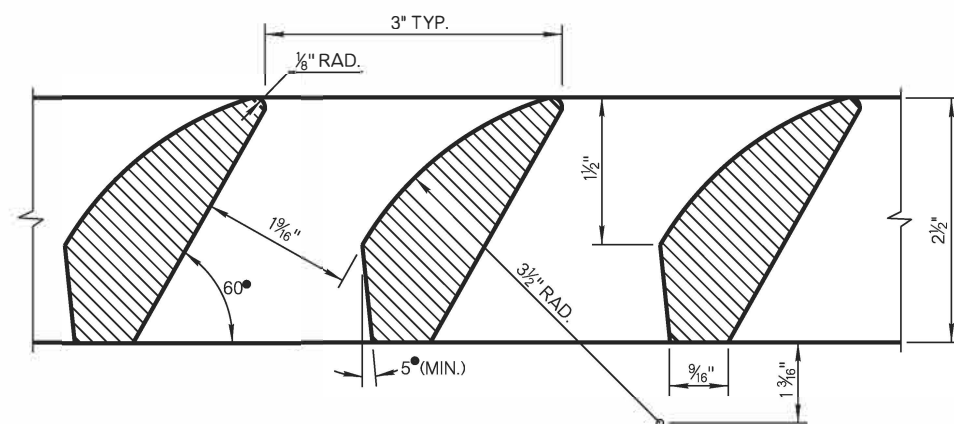


SECTION A - A (TRENCH INSTALLATION)

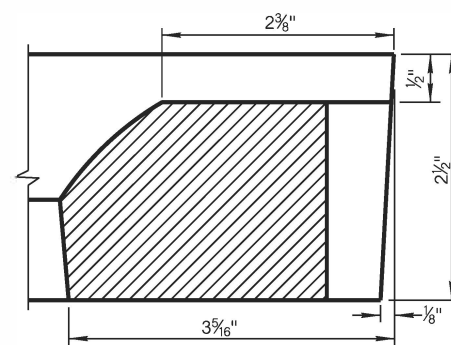
▲ MACHINING ONLY ON END BEARING AREAS



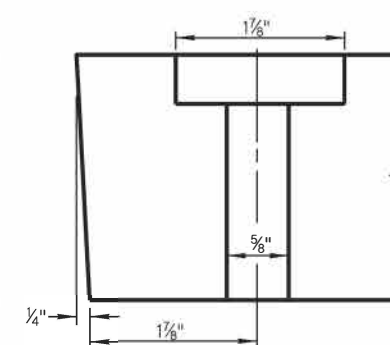
SECTION A - A (FRAME INSTALLATION)



TYPICAL SECTION THRU VANES



SECTION C - C



END VIEW

BOLT SLOT DETAILS

BASIS OF PAYMENT		
ITEM NO.	ITEM	UNIT
611 ( I )	REPLACEMENT OF INLET FRAME AND GRATE	EA
611 ( K )	REPLACEMENT OF INLET GRATE ( TYPE ■ )	EA

▼ ANY FRAME TYPE GRATE ON THIS DRAWING INSTALLED IN A PROPER FRAME, AS SHOWN ON ROADWAY STANDARD SSIF-5 ( TYPES A, B AND C ) WILL COMPRISE THE PAY ITEM.

■ CAST INLET GRATE NOMENCLATURE	
TYPE VG-F	VANE GRATE - FRAME TYPE
TYPE VG-T	VANE GRATE - TRENCH TYPE
TYPE RVG-F	RIBBED VANE GRATE - FRAME TYPE
TYPE RVG-T	RIBBED VANE GRATE - TRENCH TYPE

APPROVED BY ROADWAY ENGINEER:  DATE: 6/30/22  
ROADWAY DESIGN DIVISION STANDARD



CAST IRON GRATES  
( CURB INLETS )