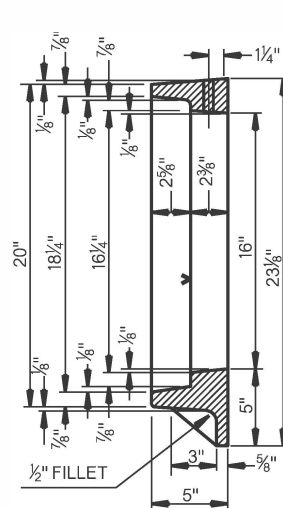
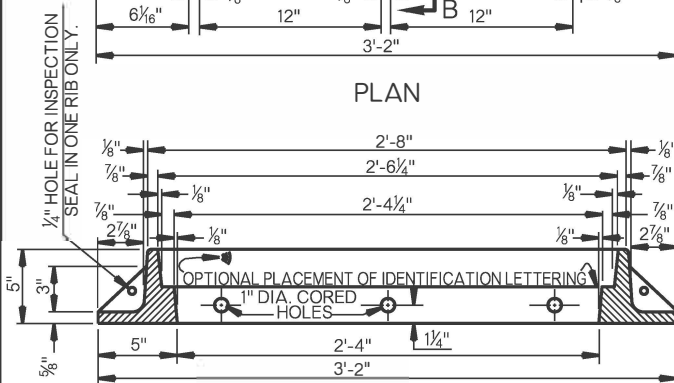


PLAN



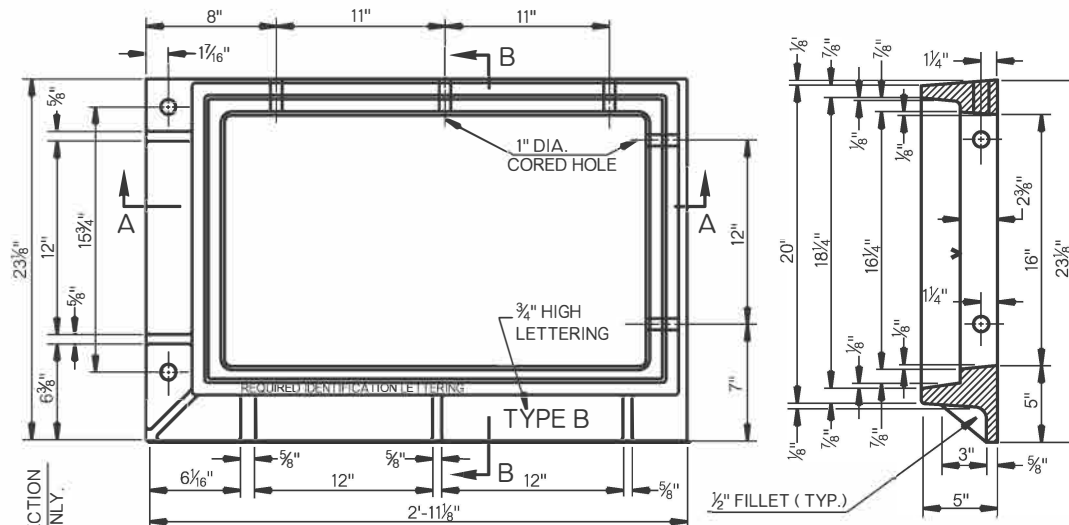
SECTION B-B

NOTE: ONLY ONE TYPE A FRAME FOR INLET DESIGN NO. 1

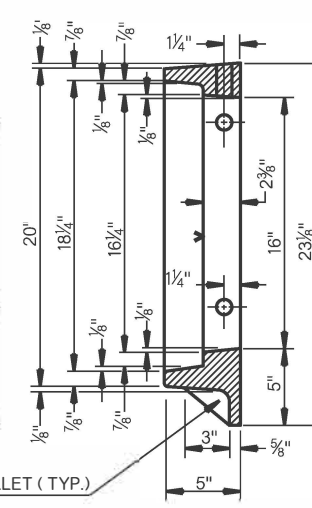


SECTION A-A

STORM SEWER INLET FRAME TYPE A FOR INLET DESIGN NO. 1



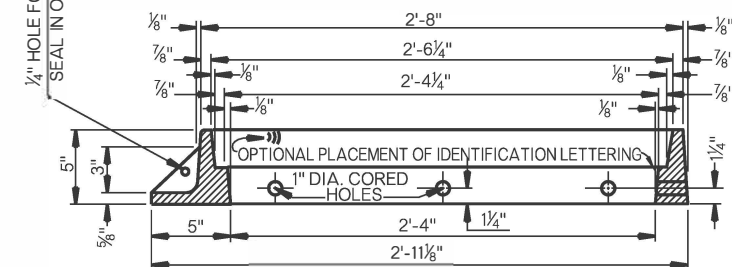
PLAN



SECTION B-B

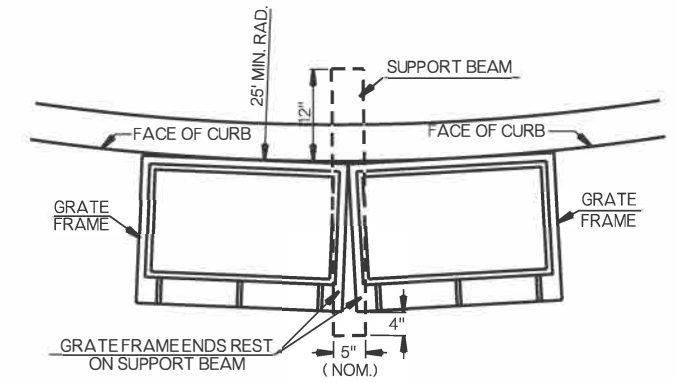
NOTE: MAKE ONE FRAME AS SHOWN AND ONE REVERSED FOR DOUBLE FRAMES

1/4" HOLE FOR INSPECTION SEAL IN ONE RIB ONLY.



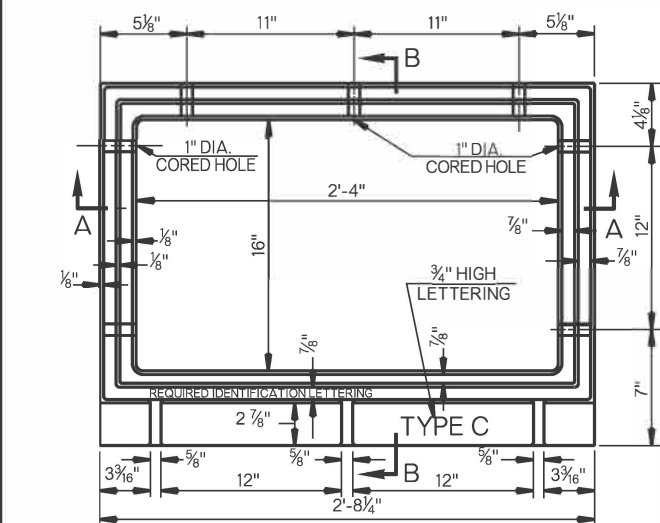
SECTION A-A

STORM SEWER INLET FRAME TYPE B FOR INLET DESIGN NOS. 2 AND 3

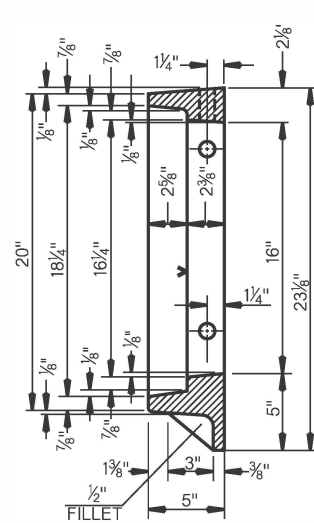


M 5 x 18.9 x 3'-4" LONG

ALTERNATE SUPPORT BEAM TO BE USED IN LIEU OF S 4 x 7.7, WHEN STRUCTURE IS BUILT ALONG CURVED CURB

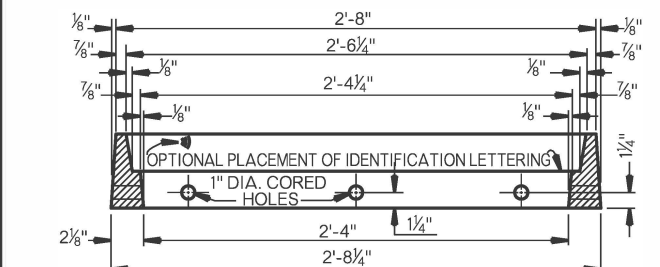


PLAN



SECTION B-B

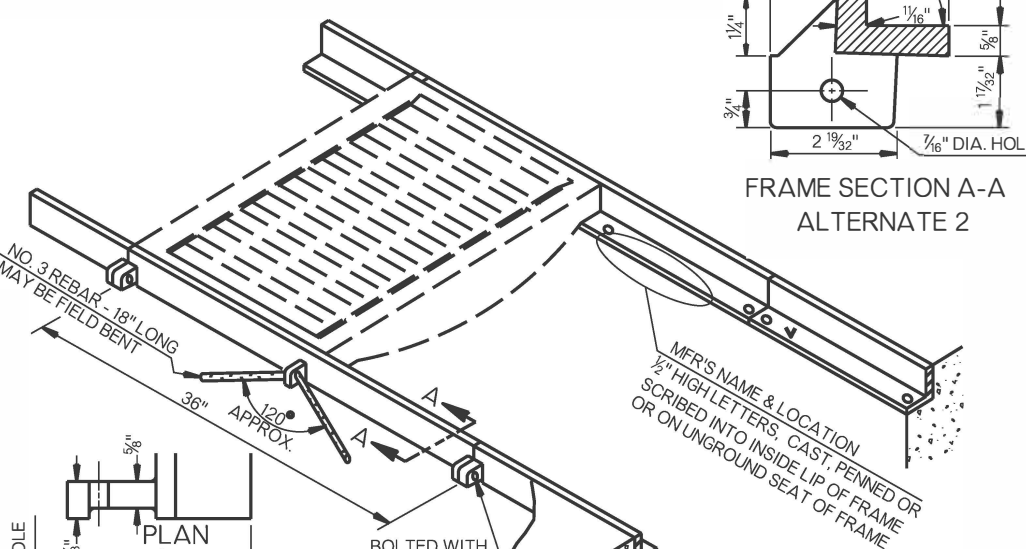
NOTE: TWO TYPE B FRAMES AND TWO TYPE C FRAMES ARE REQUIRED FOR INLET DESIGN NO. 3



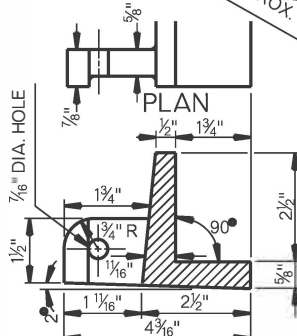
SECTION A-A

STORM SEWER INLET FRAME TYPE C FOR INLET DESIGN NO. 3

NOTE: ONE PAY UNIT OF TYPE 'TR' FRAME IS COMPOSED OF TWO 36" LONG SECTIONS OF FRAME. ONE TYPE 'TR' FRAME REQUIRES TWO TRENCH TYPE GRATES (SEE ROADWAY STANDARD CIG-4). DO NOT USE FRAME TYPE GRATES IN A TRENCH INSTALLATION. COST OF BOLTS AND REBARS TO BE INCLUDED IN PRICE BID FOR INLET FRAME. FRAME MEMBERS MAY BE FURNISHED AS TWO 18" LONG PIECES, END-MATCHED, TO PROVIDE ONE 36" LONG UNIT.



FRAME SECTION A-A ALTERNATE 2



FRAME SECTION A-A ALTERNATE 1

STORM SEWER INLET FRAME TYPE TR FOR TRENCH INLET

INLET FOR USE WITH INLET FRAME TR WILL NORMALLY BE A SPECIAL DESIGN REINFORCED CONCRETE BOX WITH PART(S) OF THE TOP REMOVED.

GENERAL NOTES

- ALL CONSTRUCTION AND MATERIAL REQUIREMENTS SHALL BE IN ACCORDANCE WITH THE 2019 ODOT STANDARD SPECIFICATIONS.
- INLET DESIGN NO. 1 REQUIRES ONE TYPE 'A' FRAME.
- INLET DESIGN NO. 2 REQUIRES TWO TYPE 'B' FRAMES AND 2 EA. -3/4" x 5" BOLTS WITH NUTS AND ONE S 4 x 7.7 x 3'-4" LONG SUPPORT BEAM. IF BUILT ON CURVED CURB, THE INLET REQUIRES 1 EA. 3/4" x 5" BOLT WITH NUT AND 1 EA. 3/4" x 6 1/2" BOLT WITH NUT AND ONE M 5 x 18.9 x 3'-4" LONG SUPPORT BEAM.
- INLET DESIGN NO. 3 REQUIRES THE SAME APPURTENANCES AS DESIGN NO. 2 WITH TWO OR MORE TYPE 'C' FRAMES LOCATED BETWEEN THE TWO TYPE 'B' FRAMES AND ONE ADDITIONAL SUPPORT BEAM AND A PAIR OF BOLTS WITH NUTS FOR EACH ADDED TYPE 'C' FRAME, PLUS ONE ADDITIONAL PAIR OF BOLTS AND SUPPORT BEAM.
- ALL LETTERING TO BE RECESSED 1/16" AND SHALL NOT EXCEED 1" IN HEIGHT. INFORMATION REQUIRED SHALL BE STATED IN THE SPECIFICATIONS. LOCATION OF LETTERING TO BE AS SHOWN WITH ADDITIONAL IDENTIFICATION LETTERING AT OTHER LOCATIONS ACCEPTABLE.
- FRAMES SHALL BE CAST STEEL, DUCTILE IRON, OR GRAY IRON CONFORMING TO SECTION 725 OF THE SPECIFICATIONS.
- INLET FRAMES AND GRATES INSTALLED DURING ORIGINAL CONSTRUCTION SHALL BE INCLUDED IN THE CONTRACT UNIT PRICE OF THE ORIGINAL INLET.

NOTE: MACHINING (SYMBOL ▲) MAY BE ACCOMPLISHED BY MILLING OR BY LEVEL GRINDING.

BASIS OF PAYMENT		
ITEM NO.	ITEM	UNIT
611 (I)	REPLACEMENT OF INLET FRAME AND GRATE (■)	EA
611 (J)	REPLACEMENT OF INLET FRAME (■)	EA

■ TYPE OF FRAME AND TYPE OF GRATE SHALL BE SPECIFIED.

TYPE A, B, OR C FRAMES AS SHOWN HERE WITH GRATES FROM STANDARD CIG-4 (TYPE VG-F OR RVG-F) COMPRISE THE PAY ITEM. SEE NOTE THIS SHEET FOR PAY UNIT.

APPROVED BY ROADWAY ENGINEER: *[Signature]* DATE: 6/30/22
ROADWAY DESIGN DIVISION STANDARD



STORM SEWER INLET FRAMES (CURB INLETS)