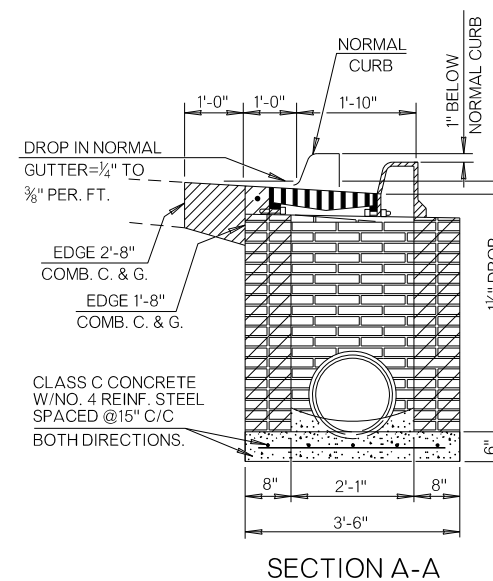
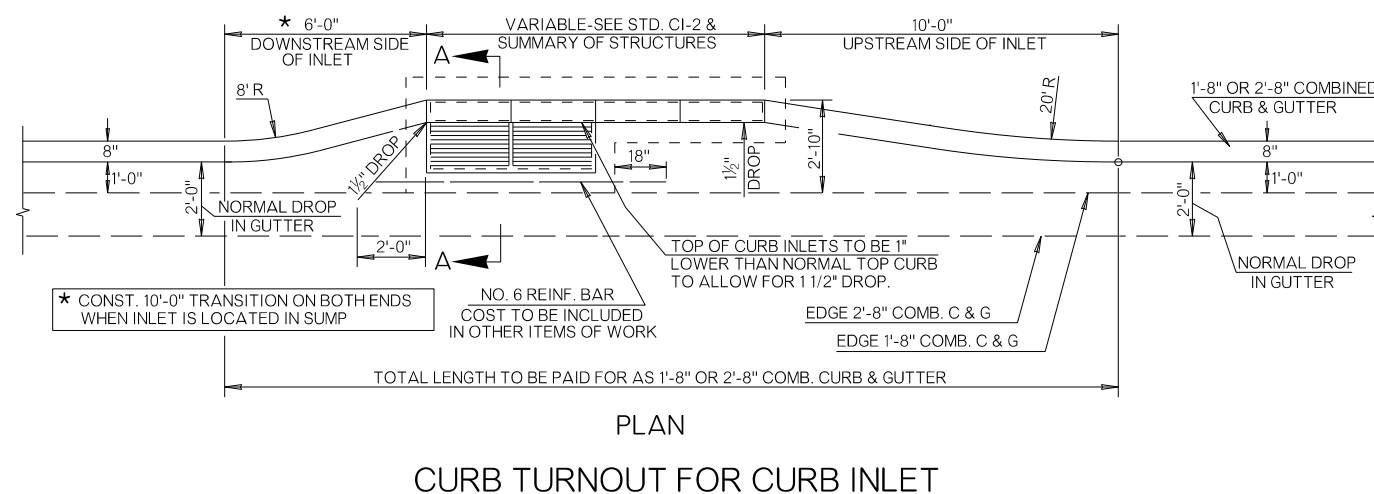


CURB OPENING - CLASS C CONCRETE QUANTITIES					
DESIGN 1			DESIGN 2		
ONE 9" LONG CURTAIN WALL	ONE 12" LONG CURTAIN WALL	PER FOOT OF FLUME	ONE 9" LONG CURTAIN WALL	ONE 12" LONG CURTAIN WALL	PER FOOT OF FLUME
0.072 C.Y.	0.096 C.Y.	0.048 C.Y.	0.055 C.Y.	0.074 C.Y.	0.037 C.Y.

ALL QUANTITIES SHOWN IN THIS TABLE ARE BASED ON WIDTHS SHOWN FOR EACH DESIGN, AND ARE FOR ONE 12" LONG CURTAIN WALL, ONE 9" LONG CURTAIN WALL AND PER FT OF FLUME LENGTH.



- GENERAL NOTES
- ALL CONSTRUCTION AND MATERIAL REQUIREMENTS SHALL BE IN ACCORDANCE WITH THE 2019 ODOT STANDARD SPECIFICATIONS.
 - INLET STRUCTURES MAY BE SUPPLIED AS PRECAST UNITS IF PROPOSED PRECAST DESIGN IS SUBMITTED TO THE ENGINEER AND APPROVED FOR USE. SEE ROADWAY STANDARD CI-2.

BASIS OF PAYMENT		
ITEM NO.	ITEM	UNIT
509 (D)	CLASS C CONCRETE	CY

APPROVED BY ROADWAY ENGINEER: *[Signature]* DATE: 4/1/2025
ROADWAY DESIGN DIVISION STANDARD



STORM SEWER CONSTRUCTION DETAILS

2019 SPECIFICATIONS

SSCD-4	2
	R-41