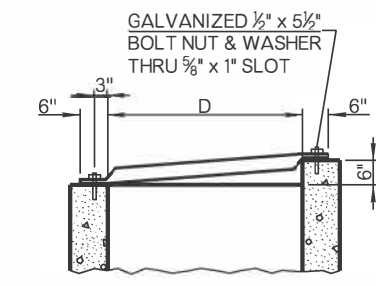
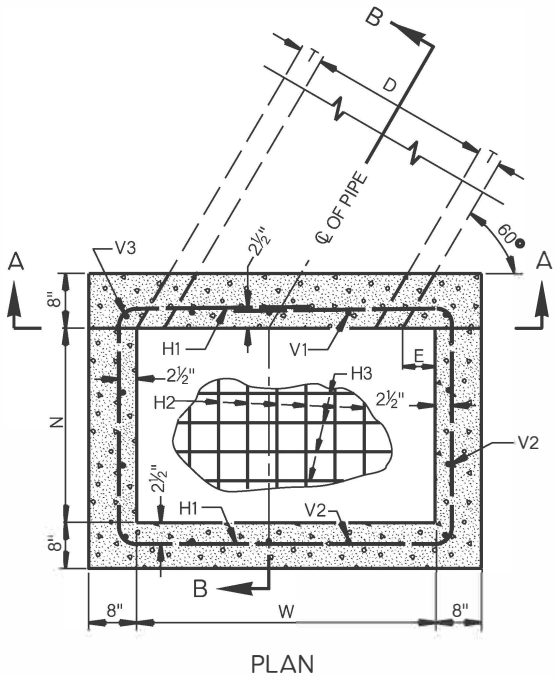


DIMENSIONS																				
DESIGN NO.	1	2	3	4	5	6	7	8	9	10										
DIAM.(D) & N	18"	24"	30"	36"	42"	48"	54"	60"	66"	72"										
AREA (SQ. FEET)	1.77	3.14	4.91	7.07	9.62	12.57	15.90	19.63	23.76	28.27										
STANDARD DEPTH	1'-11½"	2'-6"	3'-½"	3'-7"	4'-1½"	4'-8"	5'-2½"	5'-9"	6'-3½"	6'-10"										
T	2½"	3"	3½"	4"	4½"	5"	5½"	6"	6½"	7"										
E	4½"	4½"	4½"	4½"	4½"	4½"	4½"	4½"	4½"	4½"										
W	2'-7"	3'-3"	3'-11"	4'-7"	5'-3"	5'-11"	6'-7"	7'-4"	8'-0"	8'-8"										
REINFORCING STEEL																				
DESCRIPTION	NO.	LGTH.	NO.	LGTH.	NO.	LGTH.	NO.	LGTH.	NO.	LGTH.	NO.	LGTH.	NO.	LGTH.	NO.	LGTH.	NO.	LGTH.	NO.	LGTH.
CH-STR. #4 BAR	4	42"	4	50"	4	58"	4	65"	4	74"	4	81"	4	90"	4	98"	4	105"	4	113"
H1-BENT #4 BAR	5	136"	6	164"	7	192"	8	220"	14	248"	15	276"	16	304"	17	334"	18	362"	19	390"
H2-BENT #4 BAR @6" C/C	7	30"	8	36"	9	42"	10	48"	11	54"	12	60"	13	66"	14	72"	15	78"	16	84"
H3-STR. #4 BAR @6" C/C	7	39"	8	47"	9	55"	10	62"	11	71"	12	78"	13	86"	14	95"	15	102"	16	110"
V1-STR. #4 BAR	2	11½"	3	13"	4	14½"	4	16"	5	16½"	5	19"	6	20"	6	21½"	7	23"	7	24½"
V2-BENT #4 BAR	5	42"	5	48"	5	54"	6	60"	8	66"	9	72"	10	78"	12	84"	12	90"	13	96"
V3-BENT #4 BAR	2	48"	2	54"	2	59"	2	66"	2	72"	2	77"	2	84"	2	90"	2	96"	2	102"
QUANTITIES																				
CLASS A CONCRETE, CUBIC YARDS																				
STANDARD DROP INLETS	0.80	1.15	1.57	2.07	2.62	3.23	3.92	4.68	5.51	6.38										
PER FOOT OF ADD'L DEPTH	0.26	0.31	0.37	0.43	0.49	0.54	0.60	0.65	0.71	0.77										
REINFORCING STEEL, POUNDS (LBS)																				
STANDARD DROP INLETS	92.4	124.4	161.2	204.6	328.3	390.6	460.3	541.4	616.2	700.8										
PER FOOT OF ADD'L DEPTH	18.9	24.9	28.6	32.9	40.0	42.3	50.6	57.3	63.6	69.5										
NUMBER OF PIPE GRATES	2	2	3	3	4	4	5	5	6	6										

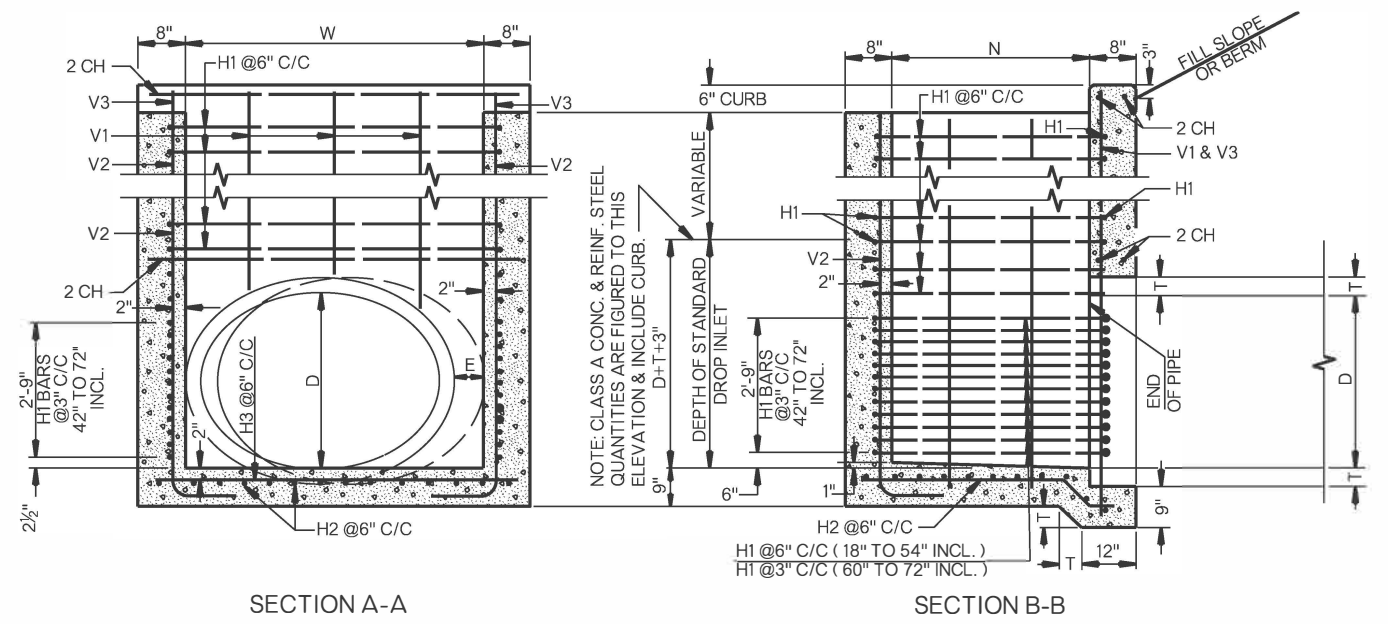


TYPICAL GRATE DETAIL



PLAN

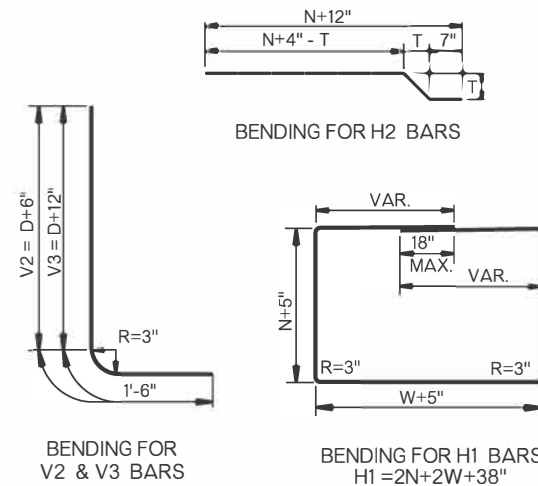
- GENERAL NOTES**
- ALL CONSTRUCTION AND MATERIAL REQUIREMENTS SHALL BE IN ACCORDANCE WITH THE 2019 ODOT STANDARD SPECIFICATIONS.
 - TOTAL QUANTITIES AS SHOWN IN TABLE ARE COMPUTED TO TOP OF THE PIPE PLUS 3" AND INCLUDES CURB. FOR DROP INLETS OF GREATER DEPTH, MULTIPLY THE FIGURE IN THE PER FOOT ROW BY THE DIFFERENCE IN HEIGHT FROM TOP OF PIPE PLUS 3" TO TOP OF DROP INLET AND ADD THE RESULT TO THE STANDARD DROP INLET QUANTITY.
 - MAXIMUM DEPTH OF DROP INLETS FOR 42" TO 72" RCP SHALL BE AS FOLLOWS:
 - 42" RCP - 22'-0"
 - 48" RCP - 18'-0"
 - 54" RCP - 16'-0"
 - 60" RCP - 14'-0"
 - 66" RCP - 12'-0"
 - 72" RCP - 11'-0"
 - INLET TOP OPENING SHALL HAVE 3" x 7.58 LBS/FT. STD. WEIGHT STEEL PIPE, GALVANIZED, SCHEDULE 40, PIPE SAFETY GRATES INSTALLED PERPENDICULAR TO THE DIRECTION OF TRAFFIC AT 12" (MAXIMUM) CENTERS WITH THE COST OF PIPE SAFETY GRATES & ALL HARDWARE NEEDED FOR INSTALLATION TO BE INCLUDED IN THE PRICE BID FOR THE INLET.
 - PIPE GRATE ENDS SHALL BE HELD DOWN WITH 1/2" x 5 1/2" GALVANIZED BOLT, WASHER & NUT MEETING THE REQUIREMENTS OF ASTM F 3125. BOLT THREADS, 1 3/4", SHALL REMAIN EXPOSED FOR INSTALLING GRATE.
 - BAR BENDING DIAGRAMS AND DIMENSIONS, AS SHOWN THIS SHEET, ARE FOR STANDARD DEPTH DROP INLETS.



SECTION A-A

SECTION B-B

NOTE: CLASS A CONC. & REINF. STEEL QUANTITIES ARE FIGURED TO THIS ELEVATION & INCLUDE CURB. D+T+3"



BAR BENDING DIAGRAMS

BASIS OF PAYMENT		
ITEM NO.	ITEM	UNIT
611 (G)	INLET CDI 30SK RCP DES.	EA
611 (H)	ADD'L. DEPTH IN INLET CDI 30SK RCP	VF

DESIGN NUMBER SHALL BE SPECIFIED.

APPROVED BY ROADWAY ENGINEER: *[Signature]* DATE: 6/30/22
ROADWAY DESIGN DIVISION STANDARD

CAST-IN-PLACE CONCRETE DROP INLETS FOR 30 DEG. SKEW 18" TO 72" R.C. PIPES
OKLAHOMA Transportation