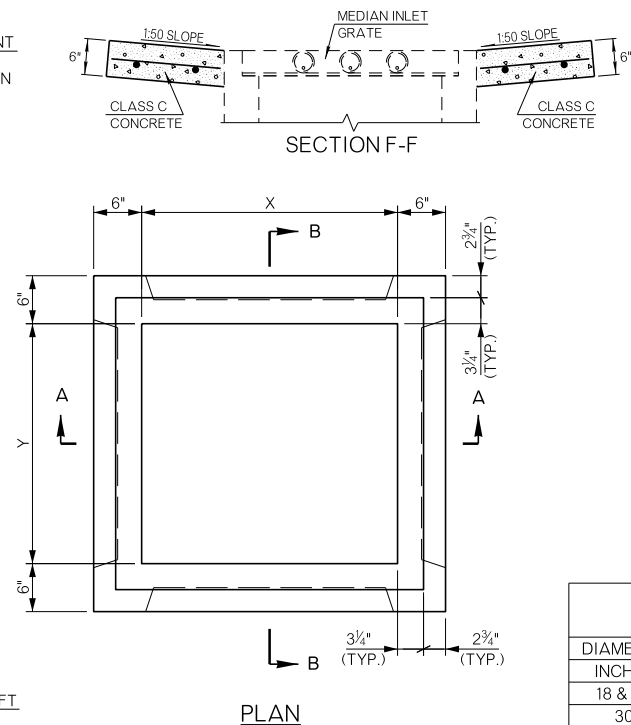


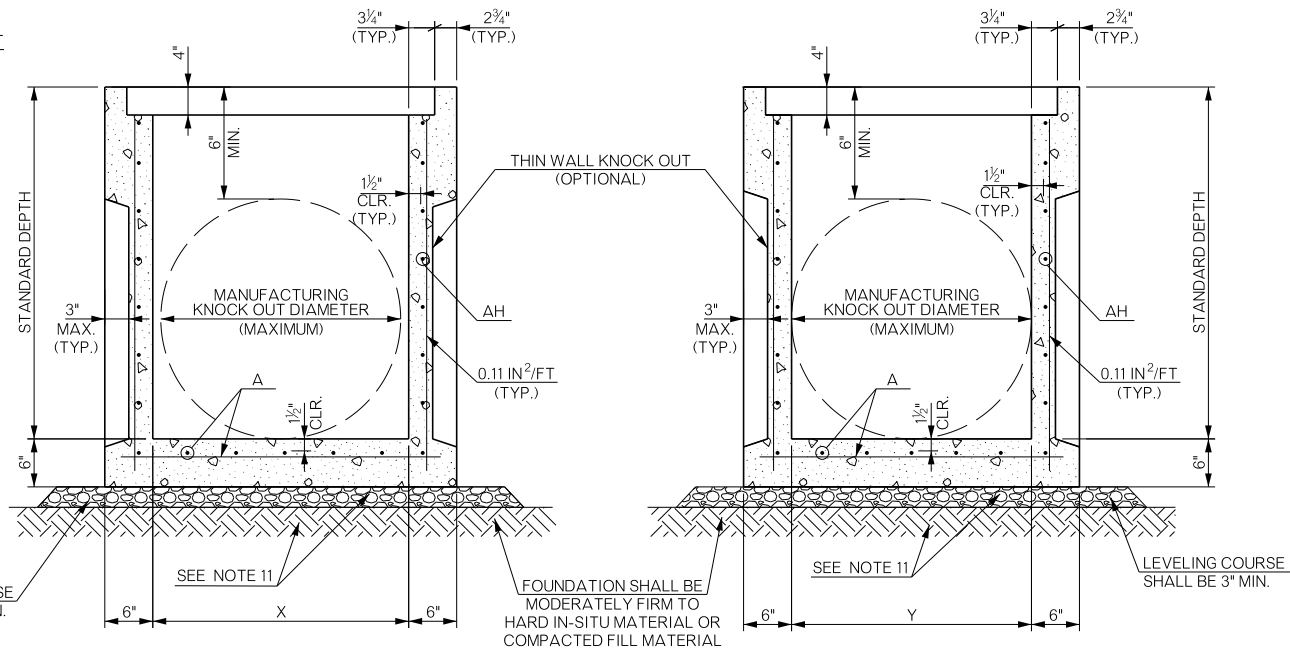
SECTION A-A
RISER OPTION



PLAN

APRON REINFORCING STEEL LOCATION & LENGTHS (#4 BARS - EQUALLY SPACED @ 18" MAXIMUM) ①								APRON REINF. STEEL °	APRON CLASS C CONCRETE °
DIAMETER INCHES	E - BARS (NO.) FT. - IN.	F - BARS (NO.) FT. - IN.	G - BARS (NO.) FT. - IN.	H - BARS (NO.) FT. - IN.	X FT. - IN.	Y FT. - IN.			
18 & 24	(4) 6 - 5	(4) 1 - 9	(4) 6 - 3	(4) 1 - 9	2 - 8	2 - 6		44	0.68
30	(4) 7 - 5	(8) 1 - 9	(4) 7 - 5	(8) 1 - 9	3 - 8	3 - 8		59	0.84

① MINIMUM 1 1/2" COVER OVER STEEL ° QUANTITIES ARE FOR ONE APRON



SECTION A-A
STANDARD DEPTH INLET

SECTION B-B
STANDARD DEPTH INLET

SCHEDULE OF DIMENSIONS AND REINFORCING STEEL																			
PIPE DIAMETER	STANDARD DEPTH	TYPE OF INLET	TYPE OF GRATE	MANUFACTURING KNOCK OUT DIAMETER	X	Y	A BARS (IN ² /FT)			AH BARS (IN ² /FT) ①									
							DEPTH			DEPTH									
							≤5'	≤10'	≤15'	4'	5'	6'	7'	8'	9'	10'	11'	12'	13'
18" & 24"	3'-2"	TYPE 1 OR 2	TYPE 1 OR 2	2'-6"	2'-8"	2'-6"	0.17	0.21	0.26	0.12	0.12	0.12	0.13	0.14	0.15	0.17	0.18	0.20	0.21
30"	4'-3"	TYPE 2B	TYPE 1B OR 2B	3'-8"	3'-8"	3'-8"	0.20	0.27	0.34	0.19	0.22	0.25	0.28	0.31	0.35	0.38	0.41	0.45	0.48

REINFORCING STEEL VALUES LISTED IN "SCHEDULE OF DIMENSIONS AND REINFORCING STEEL" ARE MINIMUM VALUES. STRUCTURES THAT PROVIDE VALUES LARGER THAN THOSE SHOWN WILL BE CONSIDERED ACCEPTABLE.

① SECTIONS WITHOUT A THIN WALL KNOCK OUT AND A MINIMUM THICKNESS OF 6 INCHES MAY USE AN AREA OF REINFORCING STEEL EQUAL TO 0.13 IN²/FT

DESIGN DATA

MATERIAL:
CLASS A CONCRETE $f'_c = 4$ KSI
REINFORCING STEEL $f_y = 60$ KSI

LOADING:
HL-93

DESIGN:
AASHTO LRFD BRIDGE DESIGN SPECIFICATIONS, 7TH EDITION
ASTM C890
ASTM C913

GENERAL NOTES

- ALL CONSTRUCTION AND MATERIAL REQUIREMENTS SHALL BE IN ACCORDANCE WITH THE 2019 ODOT STANDARD SPECIFICATIONS.
- STANDARD DEPTH IS AS SHOWN. COST OF ALL MATERIALS FOR ADDITIONAL DEPTH SHALL BE INCLUDED IN THE PRICE BID FOR THE INLET. INLET ADDITIONAL DEPTH DATA SHALL BE NOTED ON THE PLANS.
- THERE SHALL BE A MINIMUM VERTICAL DISTANCE OF 6 INCHES BETWEEN OPENINGS AND THE TOP EDGE.
- PROVIDE LIFTING DEVICES IN CONFORMANCE WITH THE MANUFACTURER'S RECOMMENDATIONS.
- PROVIDE GRADE 60 REINFORCING STEEL CONFORMING TO ASTM A615 OR EQUIVALENT AREA OF WELDED WIRE REINFORCING CONFORMING TO ASTM A1064.
- PROVIDE A MINIMUM CLEAR COVER OF 1 1/2 INCHES TO REINFORCING STEEL.
- WALLS OR SLABS WITH A THICKNESS OF 8 INCHES OR GREATER REQUIRE A SECONDARY LAYER OF REINFORCING STEEL. PROVIDE AN AREA OF STEEL EQUAL TO 0.11 IN²/FT EACH WAY.
- DESIGN TONGUE AND GROOVE JOINTS FOR FULL CLOSURE ON BOTH SHOULDERS. MINIMUM SPIGOT DEPTH IS 3/4 INCHES.
- SEAL TONGUE AND GROOVE JOINTS WITH PREFORMED OR BULK MASTIC IN CONFORMANCE WITH THE MANUFACTURER'S RECOMMENDATIONS. TONGUE AND GROOVE JOINTS MAY BE GROUTED NO MORE THAN 1 INCH BETWEEN EACH SECTION OR 1/2 THE JOINT DEPTH, WHICHEVER IS GREATER. JOINT SEALING SHALL BE INCLUDED IN COST OF STRUCTURE.
- DO NOT GROUT RUBBER GASKET JOINTS WITHOUT THE MANUFACTURER'S RECOMMENDATIONS.
- THE FOUNDATION SHALL BE STABILIZED OR REMOVED AND REPLACED WITH FIRM AND STABLE FOUNDATION MATERIAL. A MINIMUM 3 INCH THICK LEVELING COURSE SHALL BE PROVIDED BELOW THE BASE AREA OF THE INLET AND EXTEND 6 INCHES BEYOND THE BASE AREA. THE LEVELING COURSE SHALL BE CONSTRUCTED WITH AGGREGATE BASE TYPE A. COSTS ASSOCIATED WITH THE FOUNDATION AND LEVELING COURSES SHALL BE INCLUDED IN THE PRICE BID OF THE STRUCTURE.
- THIN WALL KNOCKOUTS MAY BE CAST AT THE MANUFACTURER'S DISCRETION.
- REFER TO PROJECT PLAN SHEETS FOR NUMBER, LOCATION, AND SIZE OF PIPE.
- FLEXURAL REINFORCING STEEL SHALL NOT EXCEED SPACING OF 6 INCH CENTER TO CENTER.
- COST OF APRON MATERIALS (INCLUDING REINFORCING STEEL), LABOR, AND INSTALLATION SHALL BE INCLUDED IN THE PRICE BID FOR PRECAST SMD INLET. FOR DETAILS OF APRON SEE ROADWAY STANDARD SMD-4.
- FOR GRATE DIMENSIONS AND OTHER DETAILS, REFER TO ROADWAY STANDARD SMD-4.

BASIS OF PAYMENT

ITEM NO.	ITEM	UNIT
611(G)	PRECAST INLET (SMD - TYPE 1)	EA.
611(G)	PRECAST INLET (SMD - TYPE 2)	EA.
611(G)	PRECAST INLET (SMD - TYPE 2B)	EA.

NOTE: COST OF INLET GRATE SHALL BE INCLUDED IN THE PRICE BID FOR THE INLET. COST OF ALL CLASS A CONCRETE AND REINFORCING STEEL NEEDED FOR ADDITIONAL DEPTH SHALL BE INCLUDED IN THE PRICE BID FOR THE PRECAST SMD INLET. SMD INLET ADDITIONAL DEPTH DATA SHALL BE NOTED IN THE PLANS.

APPROVED BY
ROADWAY ENGINEER: *[Signature]* DATE: 4/3/2025

ROADWAY DESIGN DIVISION STANDARD

PRECAST STANDARD MEDIAN DRAIN



2019 SPECIFICATIONS

PSMD-2	3
	R-25