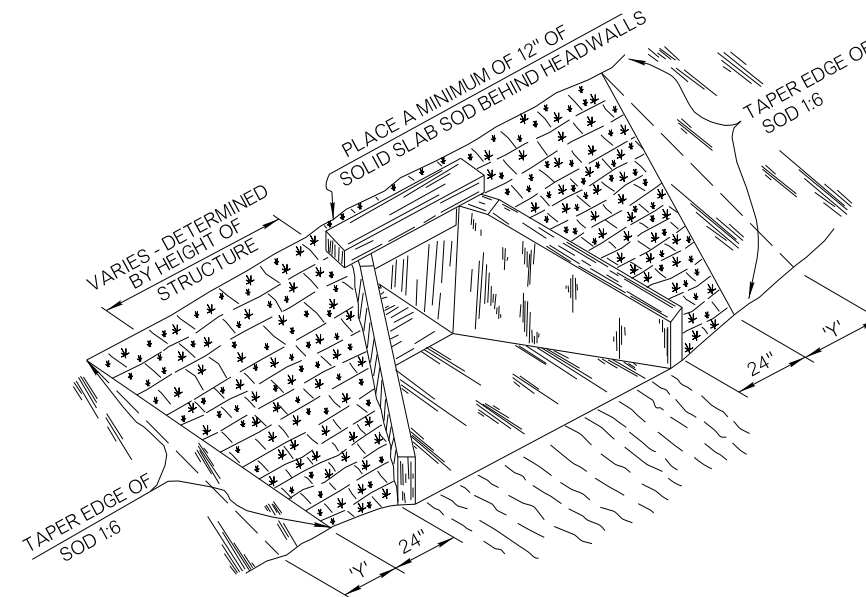


TAPER NOTE  
'Y' DIMENSION =  
SLOPE LENGTH x 0.17

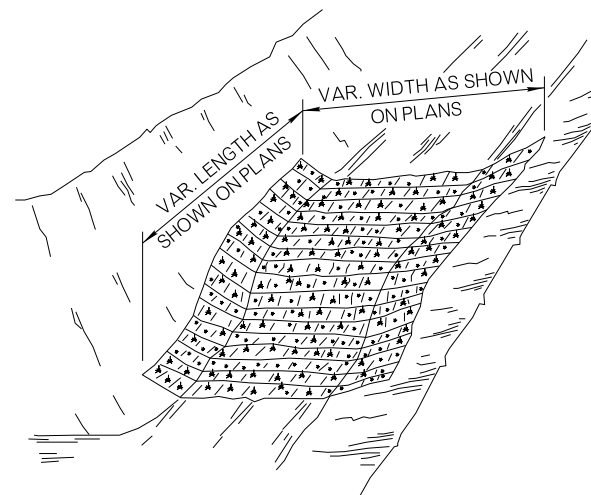
TYPICAL PLACEMENT OF SOLID SLAB SODDING OR APPROVED STABILIZING MAT ON FILL SLOPES, APPROACHES TO OVERPASSES AND BRIDGES



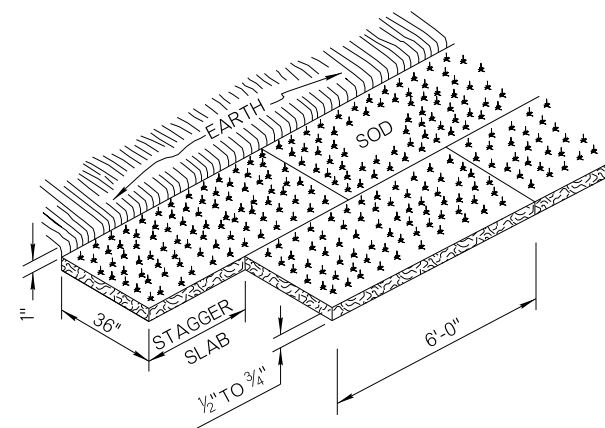
TYPICAL PLACEMENT OF SOLID SLAB SODDING AT STRUCTURE HEADWALLS

GENERAL NOTES

1. ALL CONSTRUCTION AND MATERIAL REQUIREMENTS SHALL BE IN ACCORDANCE WITH THE 2019 ODOT STANDARD SPECIFICATIONS.
2. SOLID SLAB SOD SHALL BE PLACED IN HORIZONTAL ROWS WITH THE LONGEST SIDE OF EACH SLAB RUNNING PARALLEL TO THE ROADWAY, AND THE SLABS IN ALTERNATE ROWS STAGGERED HALF THE LENGTH OF EACH INDIVIDUAL SLAB. ENSURE THE ROWS RUN PARALLEL TO THE ROADWAY.
3. SLABS SHALL BE CUT AND HARVESTED WITH A COMMERCIAL SOD CUTTER TO THE DIMENSIONS SHOWN, THEN LOADED, TRANSPORTED AND HANDLED ON PALLETS.
4. AFTER PLACEMENT OF SOLID SLAB SOD, EARTH AT THE OUTER EDGES OF THE PLACEMENT SHALL BE BACKFILLED AND LOOSELY COMPACTED TO AT LEAST 1 INCH ABOVE THE TOP OF THE SOLID SLAB SODDING.
5. WATER THE SOD IMMEDIATELY AFTER INSTALLATION, TO AN APPROPRIATE DEPTH SO AS TO ENCOURAGE HEALTHY GROWTH. SOD SHALL BE ESTABLISHED BEFORE BEING MOWED.
6. ON SLOPES STEEPER THAN ONE UNIT VERTICAL TO 4 UNITS HORIZONTAL (1:4), STAKE THE SOD WITH STAKES SPACED AS THE SOIL NATURE AND SLOPE STEEPNESS DICTATE, 24 INCHES APART ALONG THE LENGTH OF THE SOD STRIP. MAXIMUM SLOPE OF USING STAKED SOD IS 1:3; STEEPER SLOPES WILL REQUIRE AN APPROVED STABILIZING MAT. AFTER INSTALLING, STAKES SHOULD HOLD THE SOD FIRMLY IN PLACE AND PRESENT NO DANGER TO PEDESTRIANS OR MOWING CREWS. STAKES CAN BE MADE OF SOUND WOOD APPROXIMATELY 1 INCH SQUARE OR 1 INCH IN DIAMETER AND AT LEAST 6 INCHES LONG, OR METAL STAPLES IN PLACE OF WOODEN STAKES.



TYPICAL PLACEMENT OF SOLID SLAB SODDING IN DITCHES



SOLID SLAB SODDING  
( MARCH 1 THRU AUGUST 31 )

THE PLACEMENT OF SOLID SLAB SOD SHALL BE RESTRICTED TO THE PERIOD FROM MARCH 1 THRU AUGUST 31, UNLESS OTHERWISE APPROVED BY THE ENGINEER.

BASIS OF PAYMENT		
ITEM NO.	ITEM	UNIT
230(A)	SOLID SLAB SODDING	SY

APPROVED BY ROADWAY ENGINEER: *RGL* DATE: 6/29/22  
ROADWAY DESIGN DIVISION STANDARD



SOLID SLAB SODDING

2019 SPECIFICATIONS

SSS-2 1