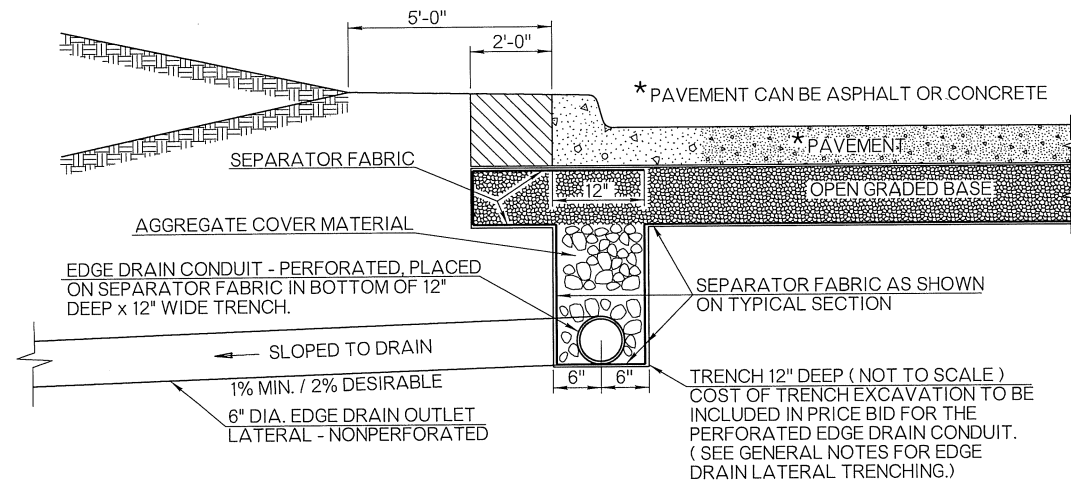
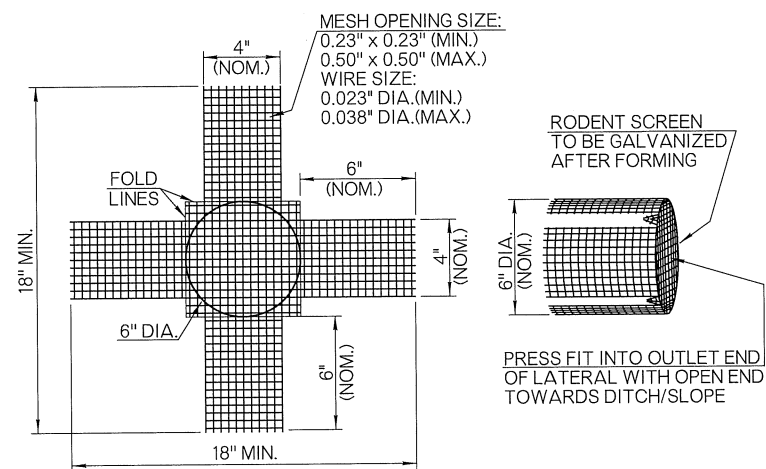


EDGE DRAIN INSTALLATION - OPEN TYPICAL SECTION

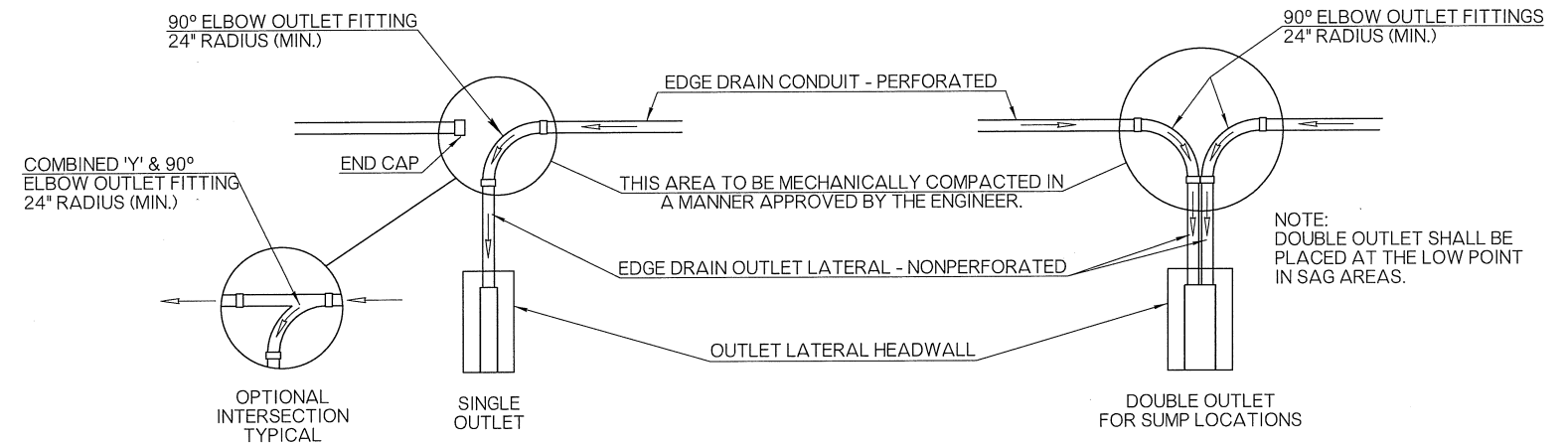


EDGE DRAIN INSTALLATION - CURBED TYPICAL SECTION

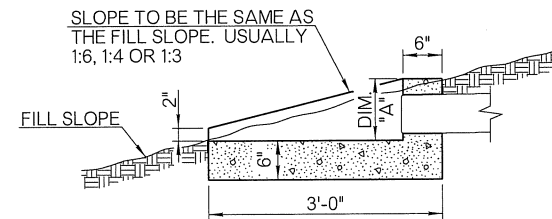


RODENT SCREEN DETAIL

THIS RODENT SCREEN DETAIL IS TYPICAL ONLY AND OTHER DESIGN LAYOUT PATTERNS MAY BE ALLOWED IF APPROVED BY THE ENGINEER. NO TOLERANCE SHALL BE ALLOWED ON MATERIAL SPECIFICATIONS. RODENT SCREEN DIMENSIONS WILL CHANGE PROPORTIONATELY FOR ALTERNATE SIZE OUTLET LATERAL CONDUIT.

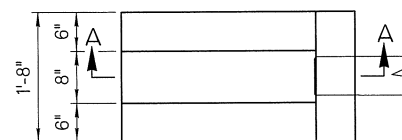


OUTLET LATERAL CONNECTIONS - PLAN

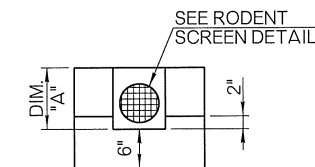


SECTION A - A

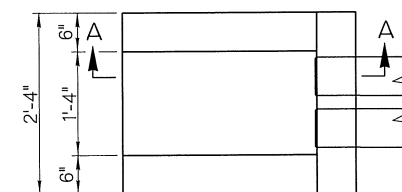
OUTLET LATERAL HEADWALL SCHEDULE			
FILL SLOPE	DIM. "A"	CLASS A CONCRETE QUANTITY	
		SINGLE OUTLET	DOUBLE OUTLET
1:3	1'-0"	0.18 C.Y.	0.23 CY
1:4	9 1/2"	0.17 CY	0.21 CY
1:6	7"	0.16 CY	0.19 CY



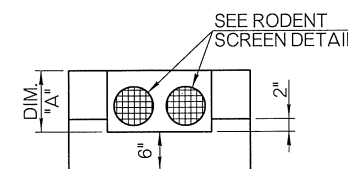
PLAN (SINGLE OUTLET)



END VIEW (SINGLE)



PLAN (DOUBLE OUTLET)



END VIEW (DOUBLE)


OUTLET LATERAL HEADWALL

NOTE: OPENING FOR LATERAL PIPE WILL VARY IN SIZE AND SHAPE, DEPENDING ON THE SIZE OF THE OUTLET LATERAL PIPE AND THE SLOPE OF THE STRUCTURE. THE OUTLET LATERAL PIPE SHALL BE CUT TO CONFORM TO THE TOP SURFACE OF THE OUTLET HEADWALL.

GENERAL NOTES

1. ALL CONSTRUCTION AND MATERIAL REQUIREMENTS SHALL BE IN ACCORDANCE WITH THE 2009 ODOT STANDARD SPECIFICATIONS.
2. INSTALLATION OF OUTLET LATERAL PIPES SHOULD BE SCHEDULED CONCURRENT WITH THE INSTALLATION OF PAVEMENT EDGE DRAIN.
3. PAVEMENT EDGE DRAIN CONDUIT SHALL NOT BE LEFT IN PLACE LONGER THAN 48 HOURS WITHOUT BEING CONNECTED TO OUTLET LATERAL PIPES.
4. OUTLET ELBOWS (90°) SHALL BE USED WHEN PIPE EDGE DRAIN SLOPE EXCEEDS TWO (2) PERCENT.
5. CONNECTION OF THE OUTLET LATERAL PIPE TO THE OUTLET FITTING SHALL BE DONE IN A MANNER APPROVED BY THE ENGINEER. COST OF ALL CAPS, FITTINGS, LATERAL PIPE, BONDING MATERIALS, RODENT SCREENS, TRENCHING AND BACKFILLING NEEDED TO INSTALL OUTLET LATERAL PIPE SHALL BE INCLUDED IN THE PRICE BID FOR EDGE DRAIN OUTLET LATERAL (NON-PERFORATED).
6. EDGE DRAINS AND OUTLET LATERALS SHALL BE LOCATED ON LOW SIDE OF SUPER ELEVATED SECTIONS AT CURVES. OUTLET LATERALS ARE TO BE PLACED AT 300' INTERVALS ON GRADE OR AS APPROVED BY THE ENGINEER.
7. PRICE BID FOR OUTLET LATERAL HEADWALL INCLUDES SURFACE PREPARATION, CLASS A CONCRETE, LABOR AND ANY INCIDENTALS NECESSARY FOR CONSTRUCTION.
8. CLASS A CONCRETE SHALL MEET REQUIREMENTS OF SECTION 509 OF THE SPECIFICATIONS.
9. AGGREGATE COVER MATERIAL SHALL MEET THE REQUIREMENTS OF SECTION 701.06 OF THE SPECIFICATIONS, AGGREGATE NO. 57. COST OF AGGREGATE COVER MATERIAL TO BE INCLUDED IN PRICE BID FOR EDGE DRAIN CONDUIT - PERFORATED.
10. DETAILS ON THIS SHEET ARE BASED ON 6" DIA. EDGE DRAIN CONDUIT. THE CONTRACTOR SHALL MAKE ALL NECESSARY ADJUSTMENTS TO ACCOMMODATE OTHER SIZE EDGE DRAINS.

BASIS OF PAYMENT		
ITEM NO.	ITEM	UNIT
613 (J)	EDGE DRAIN CONDUIT - PERFORATED	LF
613 (K)	EDGE DRAIN OUTLET LATERAL - NONPERFORATED	LF
613 (Q)	OUTLET LATERAL HEADWALL	EA

APPROVED BY _____ DATE _____
ROADWAY ENGINEER *Calderon*
ROADWAY DESIGN DIVISION STANDARD
 PAVEMENT EDGE DRAIN