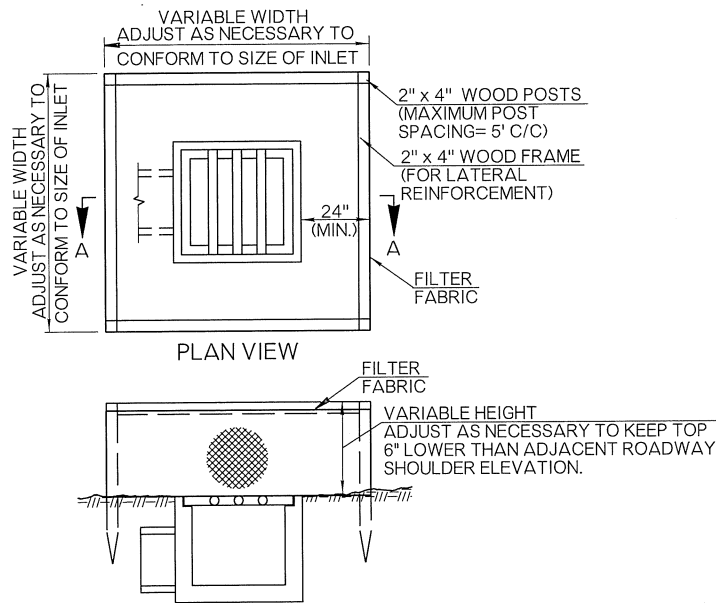
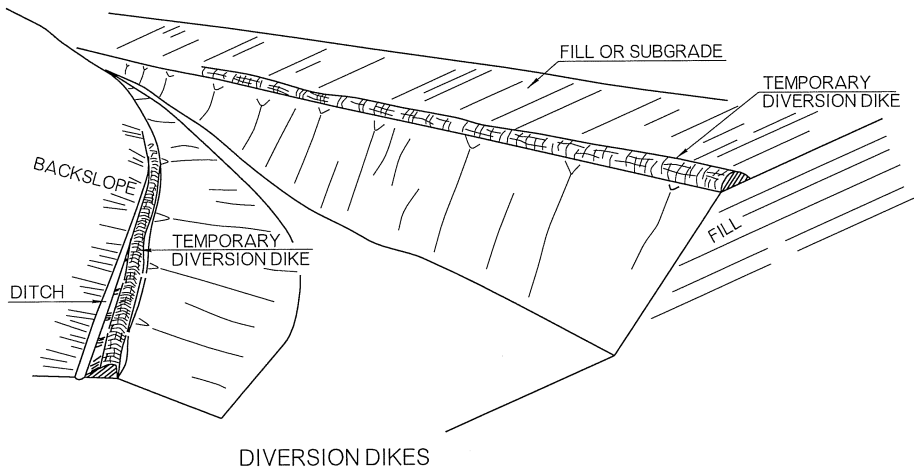
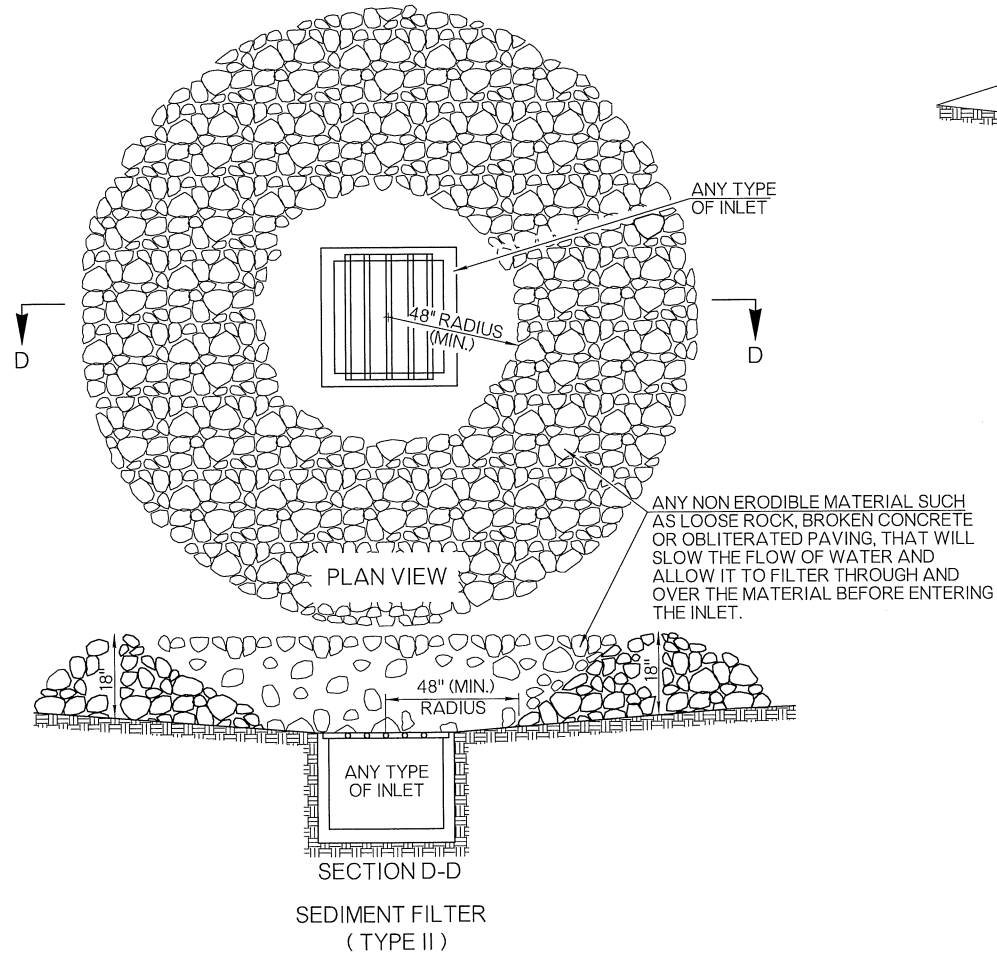
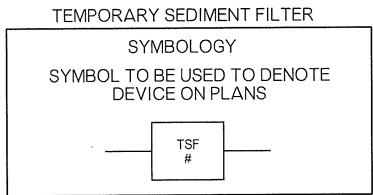


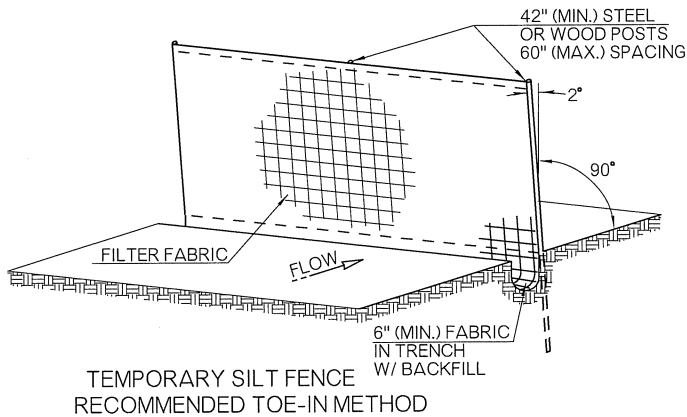
OKLAHOMA DEPARTMENT OF TRANSPORTATION		
STANDARD REVISIONS		
DESCRIPTION	DATE	



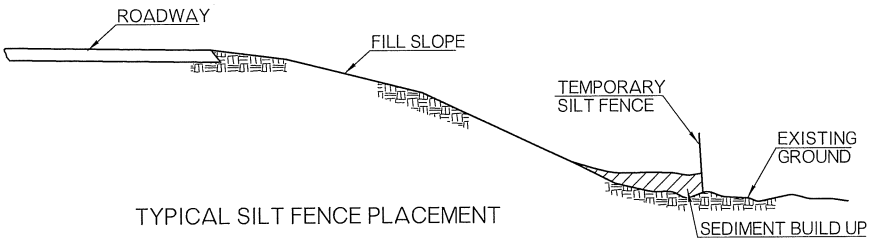
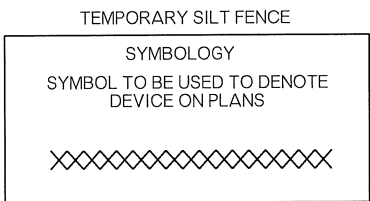
SECTION A - A
SEDIMENT FILTER



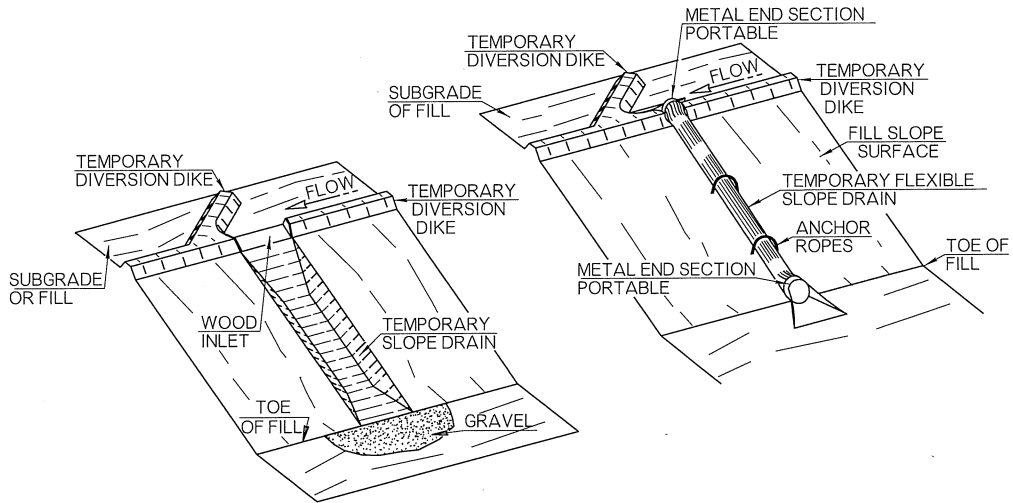
DIVERSION DIKES



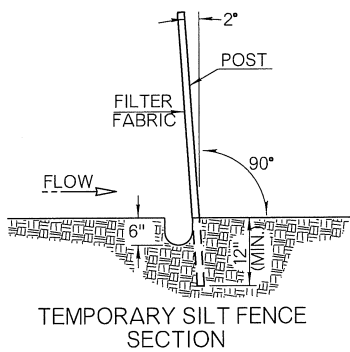
TEMPORARY SILT FENCE
RECOMMENDED TOE-IN METHOD



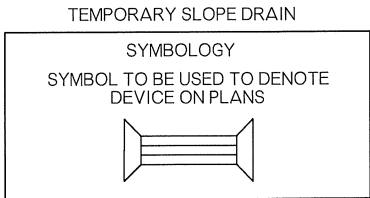
TYPICAL SILT FENCE PLACEMENT



SLOPE DRAINS



TEMPORARY SILT FENCE
SECTION



GENERAL NOTES

- ALL CONSTRUCTION AND MATERIAL REQUIREMENTS SHALL BE IN ACCORDANCE WITH THE 2009 ODOT STANDARD SPECIFICATIONS.
- COST OF TEMPORARY DIVERSION DIKES TO BE INCLUDED IN PRICE BID FOR OTHER ITEMS OF WORK.

BASIS OF PAYMENT		
ITEM NO.	ITEM	UNIT
221 (A)	TEMPORARY SLOPE DRAINS	LF
221 (C)	TEMPORARY SILT FENCE	LF
221 (D)	TEMPORARY SEDIMENT FILTER	EA

APPROVED BY

ROADWAY ENGINEER:

DATE

04/16/25

ROADWAY DESIGN DIVISION STANDARD

TEMPORARY SEDIMENT CONTROLS