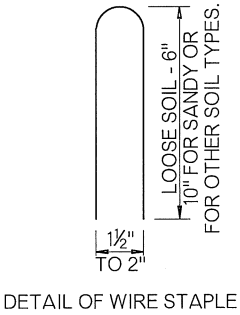
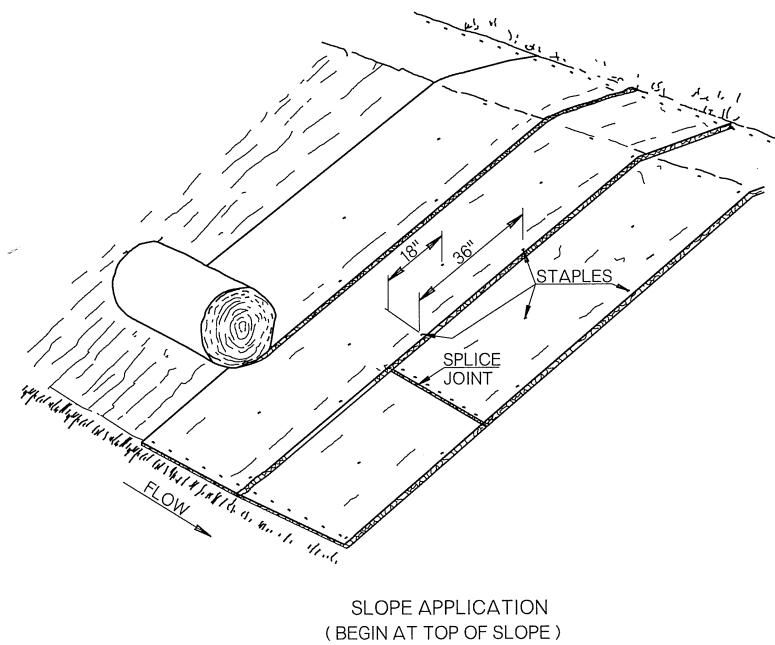
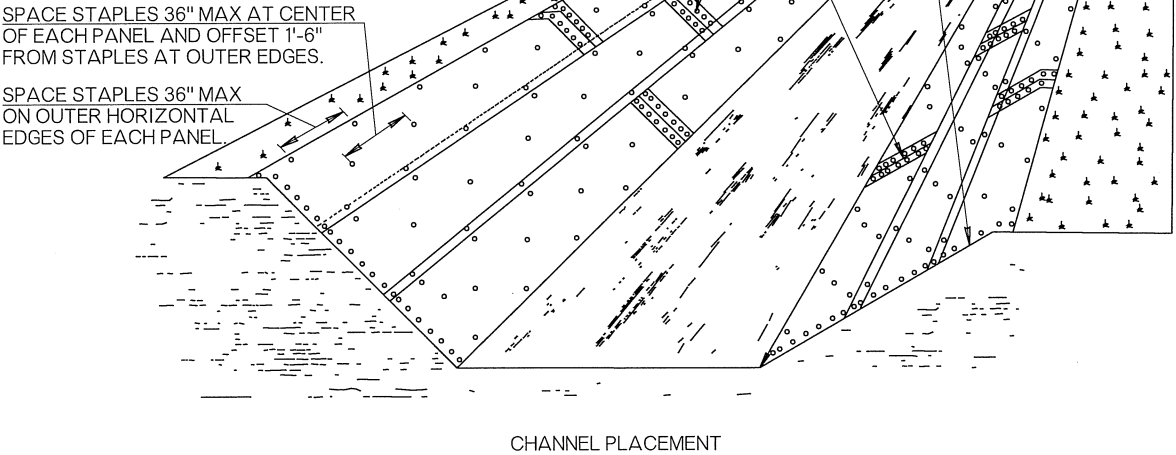
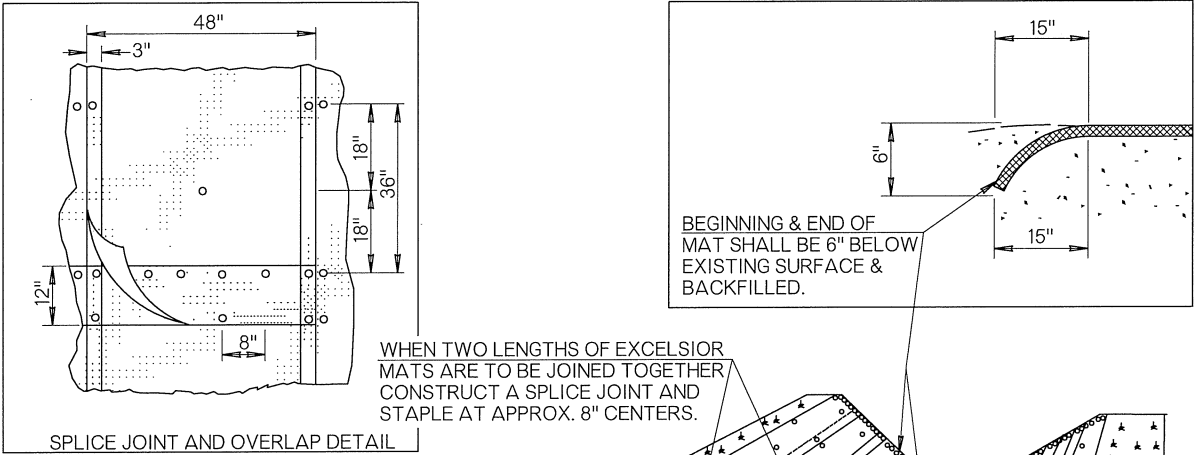
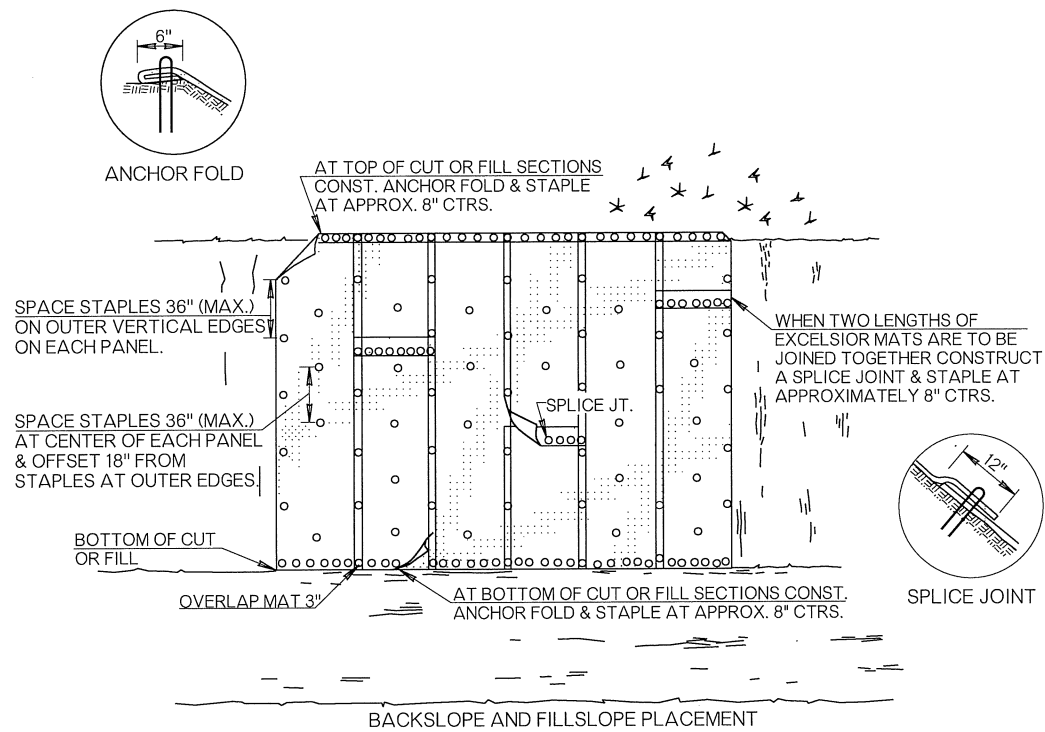


OKLAHOMA DEPARTMENT OF TRANSPORTATION		
STANDARD REVISIONS		
DESCRIPTION		DATE



- GENERAL NOTES**
1. ALL CONSTRUCTION AND MATERIAL REQUIREMENTS SHALL BE IN ACCORDANCE WITH THE 2009 ODOT STANDARD SPECIFICATIONS.
 2. THIS STANDARD DRAWING SHALL BE USED IN CONJUNCTION WITH MANUFACTURER'S SUGGESTED INSTALLATION PROCEDURES.
 3. EXCELSIOR MAT SHALL BE MEASURED & PAID FOR AS SQUARE YARDS OF MATERIAL INSTALLED IN PLACE, NOT INCLUDING OVERLAPS OR SPLICES.

BASIS OF PAYMENT		
ITEM NO.	ITEM	UNIT
233 (E)	EXCELSIOR MAT	SY

APPROVED BY

ROADWAY ENGINEER:

DATE

04/16/15

ROADWAY DESIGN DIVISION STANDARD

EROSION CONTROL MAT

(EXCELSIOR MAT)