

I-244 Bridge Bundle Pedestrian/Bicycle Trail Enhancements



Prepared by:

James Wagner
Senior Transportation Planner
INCOG

August 2009

General Concept

East Bank Realignment

The River Parks East Bank Trail follows the Arkansas River north to the intersection with Southwest Boulevard at the Arkansas River Bridge. At this point, the trail passes through the newly-completed Cyrus Avery Route 66 Centennial Plaza, under I-244 and then over the BNSF railway via a 26 foot bridge. The confluence of an arterial roadway, Interstate Highway, multi-use bicycle/pedestrian path, and Class I railroad make this a unique place for integrating modes of transportation linking the Tulsa CBD to the Arkansas River and points beyond. Currently, after passing under the vehicular bridges, pedestrians and cyclists must use the bridge over the BNSF railroad to continue on to the Newblock Park Trail and connect with the Katy Trail headed west to Sand Springs. The bridge has a 26' clearance to allow for double-stacked freight containers and requires switchbacks (see Figure 6 below) to ascend to the top of the bridge.

As proposed, the rail transit approach to the westbound lanes of the I-244 bridge could require the Right-of-Way currently occupied by the bridge structure. This may require the bridge to be retrofitted to accommodate the new alignment for rail transit as well as

West Bank Trail Extension

The west bank extension would follow a similar model as the east bank structure. The trail would continue under the Southwest Boulevard Bridge, the Cyrus Avery Route 66 Memorial Bridge, and the two spans of I-244. The trail would then terminate in a loop near the rapids just below the Holly Refinery.

Estimated Cost

	Linear Ft	\$/linear ft.	Cost
East bank, relocate trail under Southwest Blvd and Route 66 Memorial Bridge	880	\$ 800	\$ 704,000
Reconstruction of bridge over railroads to accommodate light rail	200	\$ 2,000	\$ 400,000
West bank, extend trail under 11th street bridge, Route 66 Memorial Bridge, and I-244 bridge structure	580	\$ 800	\$ 464,000
West bank, extend trail adjacent to the Arkansas River and Holly Refinery property	2,400	\$ 200	\$ 480,000

Total Project Cost \$ 2,048,000

Figure 1 Proposed East Bank Realignment

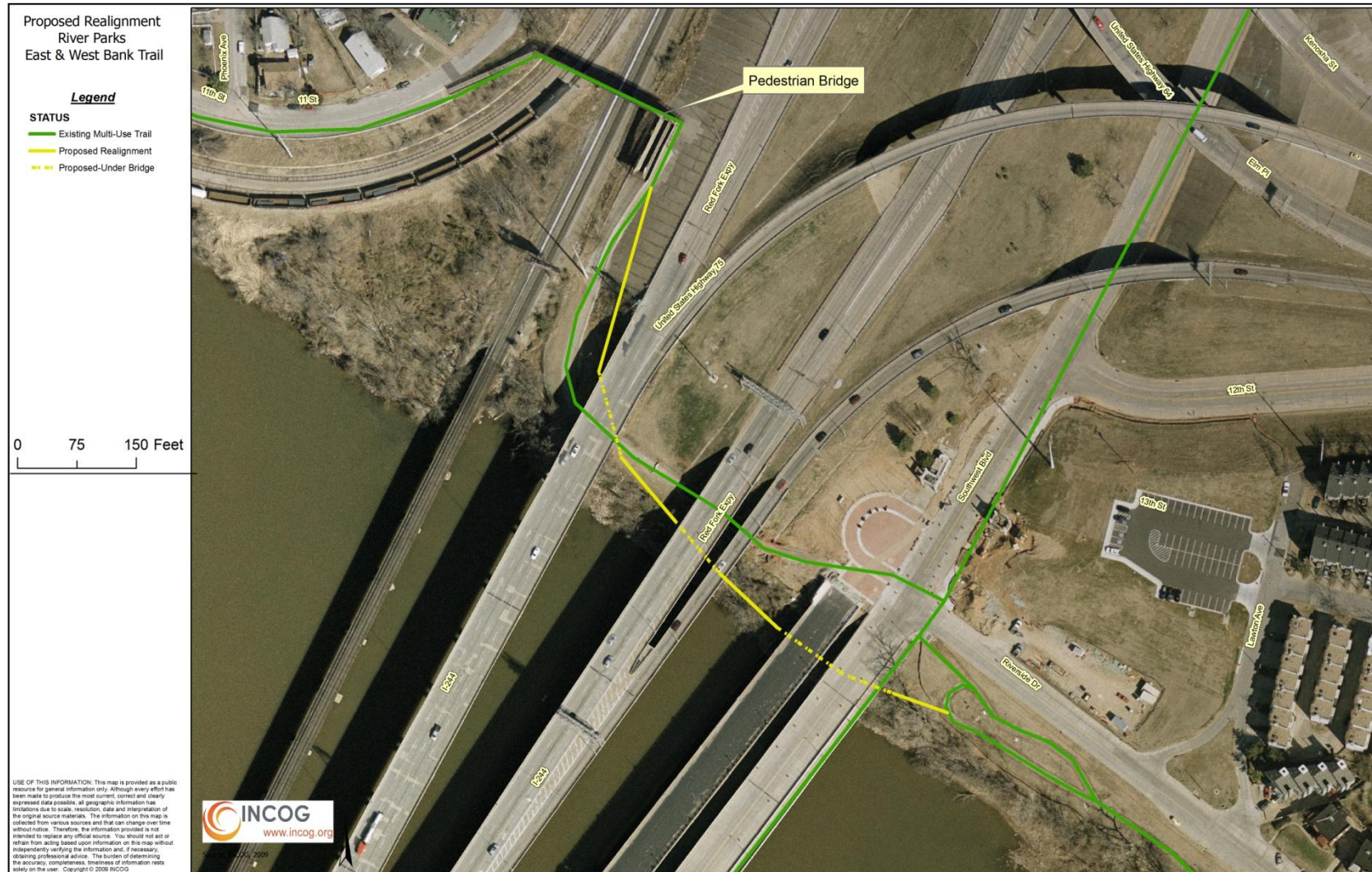


Figure 2 Proposed West Bank Extension



Figure 3 Overview of I-244 Bridge Area from the East Bank



Date: 7/23/2009
Taken From: Cyrus Avery Route 66 Centennial Plaza Parking Lot
Description: Taken from the future site of the Route 66 Interpretative Center at the corner of Riverside Drive and Southwest Boulevard. The River Parks trail crosses Southwest Boulevard and continues to connect with the Newblock Park trail.

Figure 4 Cyrus Avery Route 66 Memorial Bridge and I-244



Date: 7/23/2009

Taken From: Cyrus Avery Memorial Skywalk

Description: The Cyrus Avery Route 66 Memorial Bridge has been partially rehabilitated. This bridge was closed in 1980 due to structural concerns and had not been reopened since. The bridge terminates on the east side in the Cyrus Avery Centennial Plaza.

Figure 5 Pedestrian Bridge over BNSF Tracks



Date: 7/23/2009
Taken From: Newblock Trail Pedestrian Bridge
Description: This bridge is required to have a 26' clearance to accommodate double stacked containers (pictured). Due to this height requirement, there must be switchbacks (see Figure 6). The retrofit of this bridge will accommodate rail transit on the approach to the Westbound bridge as shown in the I-244 Bundle document produced by Dr. Jack Crowley.

Figure 6 Switchbacks to Pedestrian/Bicycle Bridge Over BNSF RR Tracks



Date: 7/23/2009
Taken From: Pedestrian/Bicycle Bridge over BNSF Railroad Tracks
Description: This bridge enables pedestrians and bicyclists to cross the BNSF railroad tracks to access the Newblock Park trail which connects with the Katy Trail to Sand Springs. This bridge crosses the BNSF tracks as well as the Sand Springs Railroad interchange tracks.

Figure 7 Layout of Route 66 Interpretive Center (future)



Description: The Route 66 Interpretive Center which is now under design will be a \$10 million facility featuring Historic Route 66 information. Currently, the bridge and Cyrus Avery Centennial Plaza are completed.

Figure 8 West Bank at the River Parks Trail



Date: 7/23/2009

Description: This photo shows clearance on the west bank of the Arkansas River for the trail to continue under the Southwest Blvd, I-244, and BNSF railway bridge and onto the Holly Refinery property just past the BNSF bridge (see Figure 2). On this side of the river, there are some rock shoals in the river that are currently not viewable to recreational runners or cyclists. Recently, the refinery made improvements to the river bank, making this an ideal extension.