

72 09 0410 X
12 / 18 / 2002

I-244 over Arkansas River, Tulsa Co.
NBI 17052

Pier # 24W
72-009X0410W
BM # 11 from VI
← S N →

I-244 over Arkansas River, Tulsa Co.
NBI 17052

72 09 0410 X
12 / 18 / 2002

Pier #27E
72 CORROSION
Bolt from W.
← N →

PIER #27E
72 0090410E
BM #11 FROM W.
← S →

72 09 0410 X

12 / 18 / 2002

E-244 over Arkansas River, Tulsa Co.

NBI 17052

72 09 0410 X

12 / 18 / 2002

I-244 over Arkansas River, Tulsa Co.

NBI 17052

Prep - 2 - 2
72 Cobblestone
Bm #11 = 1000

← →

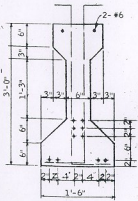
72 09 0410 X

12 / 18 / 2002

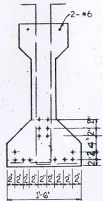
I-244 over Arkansas River, Tulsa Co.

NBI 17052

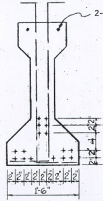
PER 30 W
72 09 0410 X
30 W FROM W
E N →



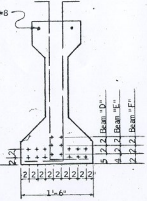
10- 1/2"
BEAM "A"



14- 1/2"
BEAM "B"



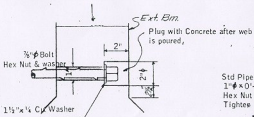
16- 1/2"
BEAM "C"



18- 1/2"
BEAMS "D", "E" & "F"

Tolerance for Lengths of RC Beams
± 1/8" for each 10 Ft. of Length with
Maximum of ± 1/2"

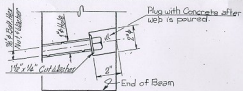
TYPICAL SECTION



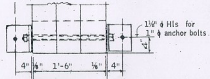
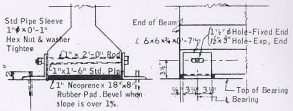
DETAIL 'A'
(TYPICAL RT. ANGLE DIAPHRAGM)




ANCHOR BOLT



'PLAN VIEW-EXT. BM.
DETAIL 'A' (SKEWED DIAPHRAGM)



GIRDER ANCHOR

A photograph of a concrete bridge pier. A prominent vertical crack runs down the center of the pier. At the top of the pier, there are two square metal plates, each with a circular hole, secured with bolts. The metal hardware is heavily rusted. The concrete surface is weathered and shows signs of scaling and cracking. In the background, a concrete bridge deck is visible, supported by the pier. The scene is outdoors, with some greenery visible in the distance.

72 09 0410 X

12 / 18 / 2002

I-244 over Arkansas River, Tulsa Co.
NBI 17052




72 09 0410 X


12 / 18 / 2002

I-244 over Arkansas River, Tulsa Co.

NBI-17052



72 09 0410 EX
12 / 18 / 2002
I-244 OVER ARKANSAS RIVER
TULSA CO.
NBI 17052




72 09 0410 EX

12 / 18 / 2002

I-244 OVER ARKANSAS RIVER

TULSA CO.


NBI 17052



72 09 0410 EX

12 / 18 / 2002


I-244 over Arkansas River, Tulsa Co.
NBI 17052



72 09 0410 EX

12 / 18 / 2002

I-244 over Arkansas River, Tulsa Co.
NBI 17052



I-244 over Arkansas River, Tulsa Co.

NBI 17052

72 09 0410 EX

12 / 18 / 2002



72 09 0410 EX

12 / 18 / 2002

I-244 over Arkansas River, Tulsa Co.

NBI 17052

72 09 0410 EX

12 / 18 / 2002

I-244 over Arkansas River, Tulsa Co.

NBI 17052



72 09 0410 EX
12 / 18 / 2002

I-244 over Arkansas River, Tulsa Co.
NBI 17052



I-244 over Arkansas River, Tulsa Co.

NBI 17052

72 09 0410 EX

12 / 18 / 2002



I-244 over Arkansas River, Tulsa Co.

NBI 17052

72 09 0410 EX

12 / 18 / 2002



72 09 0410 EX

12 / 18 / 2002

I-244 over Arkansas River, Tulsa Co.

NBI 17052

