



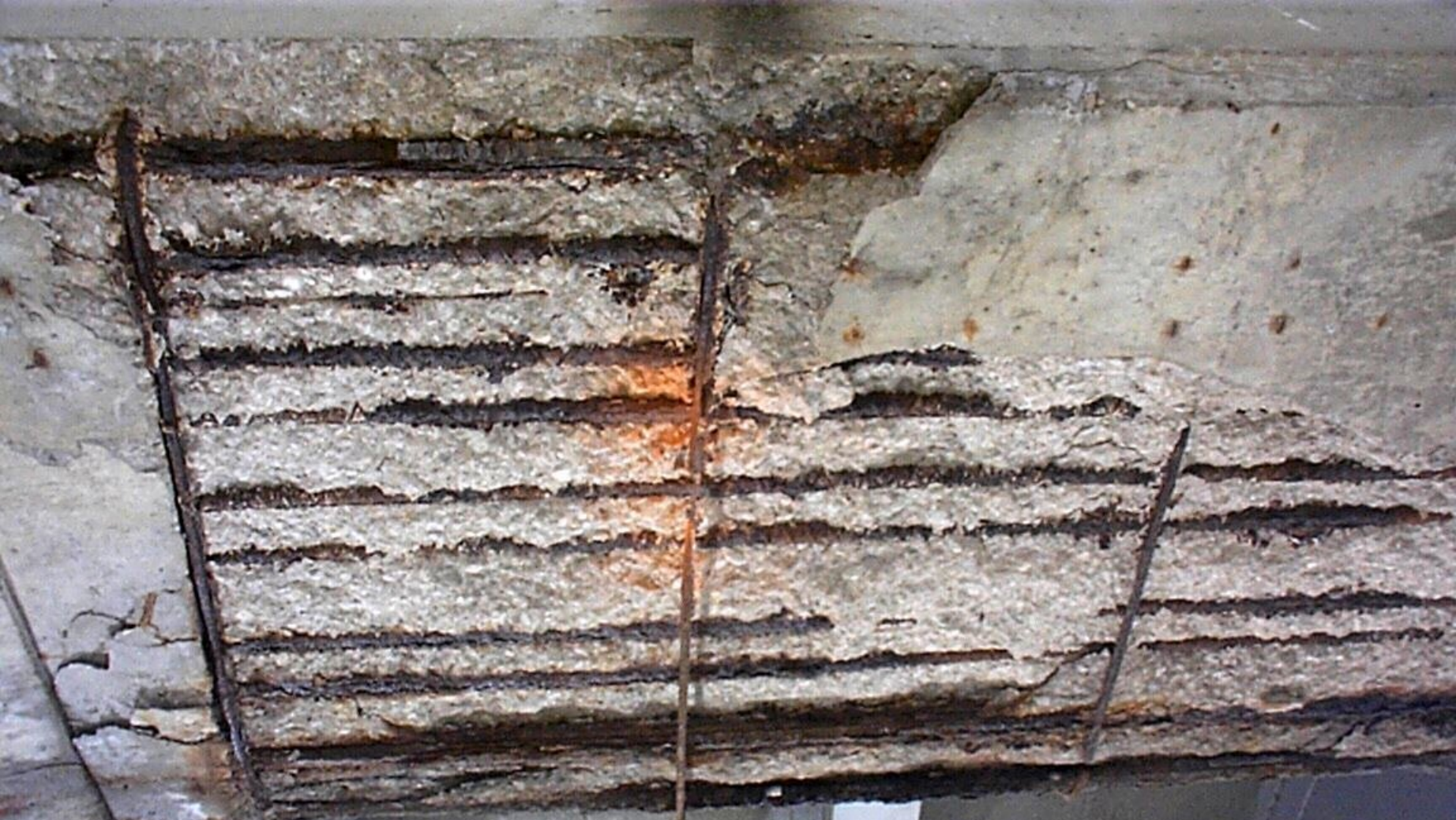
Pier #47
Beams 1 & 2
Rollers with broken keeper bars
Roller is 2" in exp.

72 09 0410 EX
12 / 18 / 2002
I-244 over Arkansas River
NBI 17052, Tulsa Co.
12/17/02



Pier #47
Beams 1 & 2
Rollers with broken keeper bars
Roller is 2" in exp.

72 09 0410 EX
12 / 18 / 2002
I-244 over Arkansas River
NBI 17052, Tulsa Co.
12/17/02



Pier #42
Bottom Cap and
South Side of Cap

I-244 over Arkansas River
NBI 17052, Tulsa Co.
12/17/02
72 09 0410 EX
12 / 18 / 2002

I-244 over Arkansas River
NBI 17052, Tulsa Co.
12/17/02
72 09 0410 EX
12 / 18 / 2002

Pier #42
Bottom Cap and
South Side of Cap

