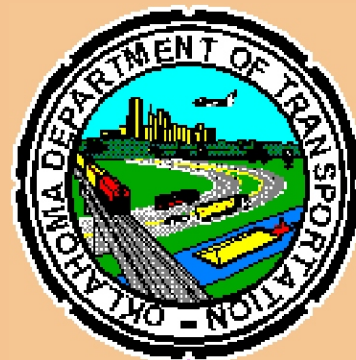




**OKLAHOMA'S MEMORIAL
HIGHWAYS & BRIDGES**



2001



OKLAHOMA'S MEMORIAL HIGHWAYS & BRIDGES

**A CHRONOLOGY OF TRANSPORTATION COMMISSION
AND LEGISLATIVE ACTIONS**

Official Designations made before

July 31, 2001

Including Oklahoma Session Laws for 2001

***Historical Data Researched and Compiled by
Planning Division
Oklahoma Department of Transportation***

Table of Contents

Forward.....	iii
Acknowledgments.....	iv
Chronological Listing of Memorial Bridges, Highways and other Special Routes with annotations of Legislative and Transportation Commission actions(s).....	1
Chronological Guide to Memorial Bridges.....	23
Map of Oklahoma’s Memorial Bridges.....	31
Chronological Guide to Memorial Highways.....	33
Map of Oklahoma’s Memorial Highways.....	45
Transportation Policy for Dedications and Commendations Title 730 Section 15-1-9 (OAC).....	47
Legislative and Transportation Commission actions by year.....	48
Standard monuments and signs - typical examples.....	55
Master Index.....	62

List of Illustrations

Map of Oklahoma’s Memorial Bridges..... 31

Map of Oklahoma’s Memorial Highways..... 45

Standard Memorial Signing..... 55

The Quanah Parker Trailway..... 56

Bronze Memorial Plaque and Monument..... 57

Dwight F. Whelan Memorial Highway..... 58

Admiral Joe “Jocko” Clark Trailway..... 59

Senator Don Baldwin Bridge..... 60

Blue Star Memorial Highway..... 61

Forward

This report is published biennially by the Planning Division of the Oklahoma Department of Transportation for distribution to the State Legislature, Transportation Commission and Department Administrative personnel. The chronology lists Memorial Highways, Bridges and other special named routes that have been designated by the State Legislature and the Oklahoma Transportation Commission since 1947. Its primary purpose is to inform the reader of existing named facilities and the prevention of duplicate or multiple commemorations for the same section of highway or bridge site. Commemorative designations for sections of Oklahoma's Turnpike System other than the *Turner* and *Will Rogers* are not listed.

Copies of Legislative and/or Transportation Commission actions pertaining to specific Memorial Highways and Bridges may be obtained upon request from the Planning Engineer, Planning Division. Current Transportation Commission policy for Dedications and Commendations is presented under Title 730, Section 15-1-9 of the Oklahoma Administrative Code. A **(PIC)** symbol in the chronology section of the guide indicates that photographic documentation is available for a particular commemorative highway or bridge.

To date, one hundred and ninety-four (194) memorial designations have been placed on roads and bridges within the state to honor and commemorate Oklahomans and Americans from all walks of life. From Martin Luther King, Jr. to Shannon Miller and Jim Thorpe of Olympic fame, Oklahoma acknowledges the outstanding contributions of its citizens and fellow Americans.

ACKNOWLEDGMENTS

PRINCIPAL RESEARCHERS

**David R. Lopez
Richard R. Sumpter
Gary R. Howell**

CONTRIBUTORS

**Jay Adams
Mary Bell
Brenda Conatser
Gary Huddleston
Thom Renbarger**

HIGHWAY NAME	DESCRIPTION	DATE
US 69	Across Oklahoma - “Jean Pierre Chouteau Highway” Commission Item U.S. Highway 69, P. 59846, 7-8-47	1947
US 70	Bridge across Lake Texoma (Washita River) east of Kingston - “Roosevelt Memorial Bridge” (Monument with plaque acknowledging appreciation of the US 70 Association to the State of Oklahoma, past and present administrations, for construction and improvement of US 70). Commission Item 83, 2-2-48. (PIC)	1948
US 77	Across Oklahoma - “Blue Star Memorial Highway” (Dedicated in Honor of all Oklahomans who served in the Armed Forces of the United States in World War I and World War II.) S. J. R. 12, Okla. Session Laws 1951, pg. 350; 69 O.S. 1981, Sec. 1601. (PIC)	1951
City Street (Old US 60)	In Bartlesville - “Frank Phillips Boulevard” . Commission Item 346, 6-4-51. (PIC)	1951
US 81	Connection to Vance Air Force Base - “Fox Drive” . Commission Item 525, 8-6-51.	1951
SH 77S (Scenic)	From SH 32 east of Marietta northerly around Lake Murray State Park with stub to City of Ardmore - “SH 77 Scenic” . Commission Item 529, 8-6-51; Commission Item 533, 10-6-52; Commission Item 150, 7-6-64 and Commission Item 40, 3-4-74. (PIC)	1951 1952 1964 1974
I-44 (Skelly Dr.) (US 66 Bypass)	51st Street Bridge across the Arkansas River in Tulsa - “Homer X. White Memorial Bridge” . Commission Item 39, 1-8-52.	1952
US 64	Across Oklahoma - “Kit Carson Highway” . Commission Item 151, 4-6-53 (Referred to Legislature for consideration; further action unknown).	1953
SH 34	Bridge across the Canadian River south of Camargo - “Johnston Murray Bridge” . Commission Item 578, 10-5-53. (PIC)	1953

HIGHWAY NAME	DESCRIPTION	DATE
SH 18	In Pawnee from Harrison Street north and east to the Black Bear Creek Bridge - “Oscar Sewell Drive” . Commission Item 144, 3-9-54. (PIC)	1954
SH 80	From Fort Gibson north to the Fort Gibson Dam - “Nathan Boone Highway” . Commission Item 485, 7-13-55.	1955
I-44	Between Tulsa and the Oklahoma/Missouri State line - “Will Rogers Turnpike” . H. J. R. 523, Okla. Session Laws 1955, pg. 583. (PIC)	1955
I-44	Between Oklahoma City and Tulsa - “Turner Turnpike” . H. J. R. 523, Okla. Session Laws 1955, pg. 583.	1955
SH 51	Bridge across the Verdigris River between Wagoner and Coweta - “The Robert S. Kerr Bridge” . S. J. R. 45, Okla. Session Laws 1955; 69 O.S. 1981, Sec. 1602. (PIC)	1955
US 60	Bridge across the Cimarron River at Orienta - “Julius W. Cox Bridge” . Commission Item 481, 6-5-56. (PIC)	1956
SH 66 (Old 66)	Bridge across the Verdigris River south of Claremore - “H. Tom Kight, Jr. Bridge” . Commission Item 562, 7-9-56. (PIC)	1956
SH 51	Bridge across Skeleton Creek east of Hennessey - “L. A. Ferrel Memorial Bridge” . Commission Item 566, 7-9-56. (PIC)	1956
SH 30	Bridge across the North Fork of the Red River north of Erick - “Louis Tittle Bridge” . Commission Item 784, 10-15-56. (PIC)	1956
US 281	Bridge across the Cimarron River south of Waynoka - “Raymond Gary Bridge” . Commission Item 802, 10-16-56. (PIC)	1956
SH 51	Bridge across the North Canadian River east of Canton - “Old Fort Cantonment Crossing” . Commission Item 917, 12-17-56. (PIC)	1956

HIGHWAY NAME	DESCRIPTION	DATE
SH 58	Bridge across Deer Creek south of Hydro - “Senator Don Baldwin Bridge” . Commission Item 402, 6-10-57. (PIC)	1957
SH 6	Bridge across the North Fork of the Red River north of Granite - “Louis M. Tittle Bridge” . Commission Item 487, 7-15-57.	1957
SH 74	Bridge across the Cimarron River south of Crescent - “Velvie Bridal Bridge” . Commission Item 591, 8-19-57. (PIC)	1957
US 183	Bridge across the Canadian River at Taloga - “The Emma Gary Bridge” . Commission Item 592, 8-19-57 (Referred to Governor Gary)	1957
SH 11 or US 177	Bridge across the Chickaskia River at Blackwell - “C. A. ‘Bud’ Stoldt Bridge” . Commission Item 687, 9-30-57.	1957
I-35	Across Oklahoma - “Raymond Gary Expressway” . H. J. R. 530, Okla. Session Laws 1957.	1957
SH 8	Bridge across Salt Fork Creek north of Cherokee - “Stanley Coppock Bridge” . Commission Item 801, 11-12-57.	1958
SH 16 (Old SH 27)	Between Drumright and Bristow - “Shibley Highway” . Commission Item 817, 12-23-58.	1958
I-40 BUS. (Old US 66)	Through Clinton - “Raymond Gary Freeway” . Commission Item 777, 11-17-58.	1958
US 281	Across Oklahoma - “American Legion Memorial Highway” H. J. R. 514, Okla. Session Laws 1959, pg. 497; 69 O.S. 1981, Sec. 1604; Commission Item 144, 5-2-60.	1959 1960
SH 132	Bridge across Turkey Creek north of Drummond - “Bruce Perry Memorial Bridge” . (PIC) (Mr. Perry was a Garfield County Commissioner)	1960

HIGHWAY NAME	DESCRIPTION	DATE
US 56	Across Oklahoma - “Santa Fe Trail Highway” . Commission Item 98, 4-4-61.	1961
US 259	Bridge across the Red River between Harris, Oklahoma and Dekalb, Texas - “The D. I. McCullough Bridge” . S. J. R. 28 Okla. Session Laws 1961, pg. 720; 69 O.S. 1981, Sec. 1610. (PIC)	1961
SH 22	Bridge across Blue River in Bryan County - “The Cowboy Pink Williams Bridge” . S. J. R. 35 Okla. Session Laws 1961, pg. 718; 69 O.S. 1981, Sec. 1611. (PIC)	1961
US 81	Bridge across Cimarron River South of Dover - “The Roy C. Boecher Bridge” . Commission Item 249, 11-5-62. (PIC)	1962
SH 117	Creek County - “Heber Finch, Jr. Highway” . H. J. R. 546, Okla. Session Laws 1963, pg. 749. (PIC)	1963
US 270	Shawnee Bypass - “Gordon Cooper Expressway” . Commission Item E-156, 7-1-63. (PIC)	1963
SH 47	Between Roll and the Roger Mills/Dewey County line - “Jody S. Moad Highway” . S. J. R. 552; 69 O.S. 1981, Sec. 1609; Commission Item 156, 7-1-63.	1963
SH 47	Between the Oklahoma/Texas State line and Roll - “S. S. McColgin Highway” . H. J. R. 552; 69 O.S. 1981, Sec. 1608; Commission Item 156, 7-1-63. (PIC)	1963
SH 2	Between Wilburton and the Latimer/Haskell County line - “Jim Cook Highway” . H. J. R. 551, pg. 761; 69 O.S. 1981, Sec. 1607; Commission Item 155, 7-1-63. (PIC)	1963
SH 20	Bridge over the Grand River west of Salina - “Jean Pierre Chouteau Bridge” . S. J. R. 63; Commission Item 154, 7-1-63. (New bridge elected in 2000. One of the old monuments was given to Chouteau Memorial in Salina just east of bridge site.) (PIC)	1963

HIGHWAY NAME	DESCRIPTION	DATE
US 59	Bridge over the Arkansas River south of Sallisaw - “Ed McDonald Bridge” . S. J. R. 28, pg. 750; 69 O.S. 1981 Sec. 1606; Commission Item 153, 7-1-63. (PIC)	1963
SH 51	Across Oklahoma - “42nd ‘Rainbow’ Infantry Division Memorial Highway” (not including “Jim Thorpe Memorial Highway”, 1975 and “Broken Arrow Expressway”, 1999). House Bill 2259, Okla. Session Laws 1998, pg. 216; House Bill 1455, Sec. 2, Okla. Session Laws 1999; Commission Items 60, 4-1-63, 111 (B), 6-1-98 and 104 (B), 7-6-99. (PIC)	1963 1998 1999
SH 1 (Old SH 88)	Between US 271 and the Oklahoma/Arkansas State line - “Robert S. Kerr Skyline Drive” . Commission Item 22, 1-7-63.	1963
US 77	Between I-35 and 15th Street in Perry - “Henry S. Johnston Memorial Highway” . Commission Item 62-E, 3-1-65. (PIC)	1965
SH 34	Bridge over the North Canadian River north of Woodward - “J. O. Selman Bridge” . Commission Item 97, 5-3-65. (PIC)	1965
US 77	Bridge over Walnut Creek in Purcell - “C. Hubert Gragg Bridge” . Commission Item 224, 11-1-66. (PIC)	1966
US 77	Bridge across the Canadian River between Purcell and Lexington - “The James C. Nance Bridge” . H. J. R. 525, Okla. Session Laws 1967, pg. 709; 69 O.S. 1981, Sec. 1612. (PIC)	1967
SH 88	Between US 169 and the Will Rogers Memorial near Lake Oologah - “Coo-Wee-Scoo-Wee Parkway” . S. J. R. 23, Okla. Session Laws 1967, pg. 716; 69 O.S. 1981, Sec. 1613.	1967
SH 58	Bridge over Medicine Lodge River west of Bryon - “Hop Bell Bridge” . (Dedicated in Honor of William H. Bell) Commission Item 100, 5-1-67.	1967

HIGHWAY NAME	DESCRIPTION	DATE
US 270	Bridge over the South Canadian River near Calvin - “Allen G. Nichols Bridge” . Commission Item E-243, 4-11-68. (PIC)	1968
SH 1	LeFlore County - “Talimena Scenic Drive” . Commission Item 190, 9-9-68.	1968
SH 3E & SH 1 (Old SH 12)	Northwest quadrant of the Ada Bypass - “The J. A. Richardson Loop” . S .J. R. 68, Okla. Session Laws 1968, pg. 815; 69 O.S. 1981, Sec. 1614. (PIC)	1968
SH 51	Bridge over the Cimarron River west of Mannford - “Wyche B. Murphy Bridge” . Commission Item 84, 4-28-69. (PIC)	1969
SH 50	Bridge over the north Canadian River southwest of Mooreland - “Omer Schnoebelin Bridge” . (Mr. Schnoebelin was founder and editor of the Mooreland Leader). Commission Item 55, 3-2-70. (PIC)	1970
US 70 Bypass	Idabel Bypass - “Virgil Jumper Memorial Highway” . Commission Resolution, 11-16-70.	1970
SH 3 (Old SH 19)	Bridge across Muddy Boggy Creek west of Farris - “C. B. Memminger Bridge” . S. R. 15, 14 th Okla. Legislature First Extra Ordinary Sessions July 15, 1933, <i>Journal of Senate of the 14th Legislature of the State of Okla.</i> Page 508. (Bridge was named in 1933 and monument was erected in 1970). (PIC)	1970 1933
US 69	Erection of markers between Muskogee and Vinita - “Jean Pierre Chouteau Highway” . Commission Item 28, 2-4-71 (See Commission Item U.S. Highway 69, 7-8-47, pg. 59846).	1971
US 64	Bridge across the Arkansas River near Webber Falls - “Ray Fine Bridge” . (Mr. Fine served as a State Legislator for 30 years). Commission Item E-59, 4-3-72. (PIC)	1972

HIGHWAY NAME	DESCRIPTION	DATE
US 77	Between Britton Road and 33 rd Street in Edmond - “Dwight F. Whelan Memorial Highway” . H. C. R. 1064, 33 rd Leg., 2d Reg. Sess., 1972. (PIC)	1972
SH 93	Bridge over the Kiamichi River in Choctaw County - “The Carl Albert Bridge” . H. J. R. 102, Okla.. Session Laws 1973, pg. 543; 69 O.S. 1981, Sec. 1615. (PIC)	1973
SH 69A	Between US 69 and the Mid-America Industrial Complex south of Pryor - “The Lyndon Baines Johnson Memorial Highway” . S. J. R. 9, Okla. Session Laws 1974, pg. 715; 69 O.S. 1981, Sec. 1616. (PIC)	1974
SH 108	Bridge across Cimarron River north of Ripley in Payne County - “Allen Williamson Bridge” . (Mr. Williamson served as State Representative 1966 - 1974. Monument erected by Cimarron River Valley Historical Society). Commission Item 56, 4/2/73. (PIC)	1974
US 60, US 64, US 412	Through the City of Enid on previous Lahoma and Markets Streets - “Owen K. Garriott Road” (Dedicated in honor of Dr. Owen K. Garriott, Astronaut). H. C. R. 1030, Oka. Session Laws 1975, pg. 768. (PIC)	1975
SH 3E	Bridge over the North Canadian River east of Shawnee - “Gene Rainbolt Bridge” . (Mr. Rainbolt served as State Highway Commissioner for District Four). Commission item 115, 6-2-75. (PIC)	1975
US 60	Between Pawhuska and the Arkansas River - “Mabelle Kennedy Highway” . (Ms. Kennedy was an avid supporter of US 60 on a local, state and national level). Commission Item 152 (A), 8-4-75. (PIC)	1975
US 412 (Old SH 33)	Bridge over the Verdigris River Navigation Channel - “Dan P. Holmes Bridge” . (Mr. Holmes was a long time highway booster and supporter of SH 33). Commission Item 152 (B), 8-4-75. (PIC)	1975

HIGHWAY NAME	DESCRIPTION	DATE
SH 51	Between SH 18 west of Yale and US 64 near Keystone Dam - “Jim Thorpe Memorial Highway” . H. C. R. 1028, Okla. Session Laws 1975; pg. 767; Commission Item 174, 9-2-75. (PIC)	1975
SH 48	Bridge east of Allen across the Canadian River - “Hugh M. Sandlin Bridge” . H. J. R. 1011, Okla. Session Laws 1975; pg. 736; 69 O.S. 1981, Sec. 1617. (PIC)	1975
I-40	Between Roland and Moffett, Sequoyah County - “Ray Fine Memorial Highway” . (Mr. Fine served as a State Legislator for 30 years). Commission Item 102, 6-7-76.	1976
US 177	Bridge over the Cimarron River south of Perkins - “Lee Kirk Bridge” . (Mr. Kirk was an outstanding Payne County leader.) Commission Item 252, 12-6-76. (PIC)	1976
SH 33	Bridge over the Cimarron River east of Perkins - “Robert M. Murphy Bridge” . (Mr. Murphy served as a State Senator). Commission Item 32 B, 2-7-77. (PIC)	1977
SH 99	Bridge over Wewoka Creek south of Seminole - “John Quimby Wilson Bridge” . (Mr. Wilson was a long time Resident Engineer with the Department of Highways). S. J. R. 9, Okla. Session Laws 1977, pg. 989; 69 O.S. 1981, Sec. 1618. (PIC)	1977
SH 10	Between I-40 and US 64 in Sequoyah County - “Paul Carlile Road” . (Mr. Carlile Served as State Highway Commissioner from 1947 to 1959). Commission Item 157, 9-6-77. (PIC)	1977
SH 104	Bridge over the Arkansas River between Haskell and Choska Bottom - “The Choska Bridge” . Commission Item 208, 12-4-78. (PIC)	1978
US 283	Bridge over the south Canadian River on the Roger Mills/Ellis County line - “The Mark ‘Buzz’ Bradshaw-Packsaddle Bridge” . H. C. R. 1026, Okla. Session Laws 1979, pg. 945. (PIC)	1979

HIGHWAY NAME	DESCRIPTION	DATE
SH 56	Across Seminole County - “Seminole Nation Highway” . (Acknowledges the Seminole Nation for its public service and contributions to its constituents and all Oklahoma). H. C. R. 1028; Commission Item 102, 7-2-79. (PIC)	1979
SH 93	Between the Choctaw/Pushmataha County line and Hugo Lake in Choctaw County - “Ben Haskins Memorial Highway” . (Mr. Haskins was a prominent contractor and owner of Ben Haskins Construction Company). Commission Item 161, 10-1-79. (PIC)	1979
US 77	Between north city limits of Ponca City north to SH 11 - “Flavel D. Perry Highway” . Commission Item 47, 3-3-80. (PIC)	1980
City Street (Old SH 77H)	Bridge over I-35 on Reno Avenue in Oklahoma City - “Frank Lynch Bridge” . (Mr. Lynch served as County Commissioner for Oklahoma County from 1964 to 1980). Commission Item 98, 6-2-80. (PIC)	1980
SH 50	Bridge over the Cimarron River at the Woods/Woodward County line - “Louis M. Kamas Bridge” . H. R. 1063; Commission Item 116, 7-1-80. (PIC)	1980
US 81	Bridge on US 81 south of Enid at the Vance Air Force Base Exit - “James H. Gungoll Bridge” . (Mr. Gungoll served as State Transportation Commissioner from 1975-1980). Commission Item 210, 12-1-80. (PIC)	1980
SH 3	Between the State Capitol at Oklahoma City and the Colorado State line north of Boise City - “Northwest Passage” . Commission Item 18 (E), 2-2-81; Commission Resolution. (PIC)	1981
US 62	Tahlequah Bypass (SE section) - “Bertha Parker Bypass” . (Ms. Parker served as Chairman of the Transportation Commission and President of the American Legion Auxiliary). S. C. R. 16, Okla. Session Laws; Commission Item 86, 5-4-81. (PIC)	1981

HIGHWAY NAME	DESCRIPTION	DATE
S. 71st Street (Old SH 117)	Bridge across the Arkansas River on south 71st Street in Tulsa (plaque erected in recognition of William R. Nash , Transportation Commissioner). Commission Item 123, 7-11-83. (PIC)	1983
SH 270	Bridge over the North Canadian River at Dale - “Oliver C. Walker Bridge” . Commission Item 137, 8-1-83. (PIC)	1983
I-40	Between Oklahoma City and Shawnee - “Tom Steed Memorial Highway” . H. C. R. 1023, 6-23-83; Commission Item 172, 10-11-83. (PIC)	1983
SH 33 US 412	Between I-44 in Tulsa County and the Oklahoma/Arkansas State line at West Siloam Springs - “Dan P. Holmes Memorial Highway” . Commission Item 30, 2-6-84. (PIC)	1984
I-244	Between I-44 Junctions in Tulsa - “Martin Luther King, Jr. Memorial Expressway” . Commission Item 30, 2-6-84. (PIC)	1984
SH 66	Between Bushyhead and White Oak, Rogers and Craig Counties - “Admiral Joe ‘Jocko’ Clark Trailways” . Commission Item 149, 9-4-84. (PIC)	1984
City Street (Old SH 18)	Bridge over the North Canadian River on Beard Street in Shawnee - “James W. Allen Bridge” . Commission Item 150, 9-4-84. (PIC)	1984
SH 3 Bypass	Between SH 3 and SH 7 at the west edge of Atoka - “The Cecil B. ‘Bud’ Greathouse Bypass” . Commission Item 170, 10-1-84. (PIC)	1984
I-35	Through the Arbuckle Mountains beginning at the intersection of I-35 and US 77 and ending at the intersection of I-35 and SH 53 - “Honey Creek Pass” . S. C. R. 30, Okla. Session Laws 1984, pg. 1199. (PIC)	1984

HIGHWAY NAME	DESCRIPTION	DATE
US 70	Bridge over Boggy Creek west of Soper - “ The Frank M. Fodge Bridge ”. S. C. R. 32, Okla. Session Laws 1984, pg. 1200. (PIC)	1984
US 75	Bridge over the North Canadian River north of Wetumka - “ Jack Herring Bridge ”. S. C. R. 31, Okla. Session Laws 1984, pg. 1201. (PIC)	1984
Ash Creek Rd.	Bridge over Fouche Maline Creek at Lake Wayne Wallace in Latimer County - “ The Frank Glenn Bridge ”. H. R. 1057, Okla. Session Laws 1984, pg. 1239. (Resolution directs the Department of Wildlife to place suitable permanent markers on said bridge). (PIC)	1984
Lake Access Rd.	Between US 77 and Kaw Reservoir - “ Roy Grantham Memorial Road ”. S. C. R. 12, Okla. Session Laws 1985, pg. 1689; Commission Item 44, 3-4-85.	1985
SH 33	Bridge over the South Canadian River east of Thomas - “ Marion Diel Bridge ”. Commission Item 75, 4-1-85. (PIC)	1985
US 60	Bridge over Deer Creek approximately 1.8 miles west of I-35 Junction - “ William J. King Bridge ”. H. R. 1010, Okla. Session Laws 1985, pg. 1746; Commission Item 80, 5-6-85. (PIC)	1985
SH 9A	Bridge over the Poteau River at Arkoma - “ Tom Traw Bridge ”. H. C. R. 1004, Okla. Session Laws 1985, pg. 1710; Commission Item 80, 5-6-85. (PIC)	1985
SH 99	Pawhuska Bypass - “ John Dahl Avenue ”. Commission Item 110 (A), 6-3-85. (PIC)	1985
SH 66	Between Claremore and Bushyhead - “ Clem McSpadden Highway ”. Commission Item 175, 10-7-85 (PIC)	1985
US 70	Hugo Bypass - “ Jake Pullen Bypass ”. Commission Item 192, 11-4-85.	1985

HIGHWAY NAME	DESCRIPTION	DATE
US 69	Across Pittsburg County - “George Nigh Expressway” . S .C. R. 44, Okla. Session Laws 1986, pg. 1605; Commission Item 33, 2-21-86.	1986
SH 66 (Old US 66)	Across Lincoln County - “Route 66 Memorial Highway” . H. R. 1051, Okla. Session Laws 1986, pg. 1674.	1986
US 64, US 412	Between I-244 in Tulsa and US 270 - SH 3 in Woodward - “Cimarron Highway” . Commission Item 5 (A), 1-5-87. (PIC)	1987
US 60	Bridge over Turkey Creek, near Lahoma - “Floyd E. Carrier Bridge” . Commission Item 5 (B), 1-5-87. (PIC)	1987
SH 123	Between SH 11 and US 60 in Osage County - “Frank Phillips Memorial Highway” . Commission Item 164, 9-8-87. (PIC)	1987
US 60	From the Arkansas River Bridge south of Ponca City west to the Grant County line - “E. W. Marland Memorial Highway” . Commission Item 27, 2-1-88. (PIC)	1988
SH 3	Across Oklahoma - “45th Infantry Division Memorial Highway” . S. C. R. 93, Okla. Session Laws 1988, pg. 1919; S. C. R. 7, Okla. Session Laws 1989, pg. 1679; S. C. R. 64, Okla. Session Laws 1992, pg. 2884; Commission Items 88, 5-2-88, and 194 (D), 9-5-89. (PIC)	1988 1989 1992
I-235	In Oklahoma City - “Centennial Expressway” Commission Item 134, 7-5-88. (PIC)	1988
SH 99	Bridge across the South Canadian River on the Pontotoc/ Seminole County line - “Haney-Abbott Bridge” Seminole County side, “Abbott-Haney Bridge” Pontotoc County side; Dedicated to Enoch Kelly Haney and Lonnie Abbott. S. C. R. 97, Okla. Session Laws 1988, pg. 1920 (Designation pending commission consideration; further action unknown).	1988

HIGHWAY NAME	DESCRIPTION	DATE
SH 44	Bridge across the North Fork of the Red River on the Greer/ Kiowa County line - “Victor Wickersham Bridge” S. C. R. 98, Okla. Session Laws 1988, pg. 1227; Senate Bill 203, Okla. Session Laws 1999, pg. 141; Commission Item 86 (A), 6-7-99. (PIC)	1988 1999
US 59	Bridge over the Poteau River south of Heavener - “Joe A. Johnson Bridge” . H. C. R. 1086, Okla. Session Laws 1988, pg. 1922.	1988
US 59	Between Beeler Street and Hughes Drive in Poteau - “Mick Thompson Road” . H. C. R. 1087, Okla. Session Laws 1988, pg. 1923. (PIC)	1988
SH 112	Between Arkoma and Pocola - “B.L. Klutts Highway” . H. C. R. 1088, Okla. Session Laws 1988, pg. 1924; Commission Item 183, 10-2-95. (PIC)	1988 1995
SH 56	Bridge over the North Canadian River in Okfuskee County - “J. O. ‘Cotton’ Smith Bridge” . H. C. R. 1107, Okla. Session Laws 1988, pg. 1956; Commission Item 48 (B), 3-5-90 and 112, 5-7-90. (PIC)	1988 1990
US 64	Bridge over the Arkansas River in Bixby - “Bixby Spartan Pass” . Commission Item 38; 2-6-89. (PIC)	1989
US 69	Across Oklahoma - “Lakeshore Parkway” . Promotional designation sponsored by the Department of Tourism, (Dept. of Tourism to pay cost of signs and ODOT to select location of signs in accordance with uniform signing code). Commission Item 80, 4-3-89.	1989
SH 10	From Tahlequah to Kansas - “Illinois River Scenic Drive” . Commission Item 81, 4-3-89. (PIC)	1989
SH 100	Between the Adair/Cherokee County line and US 59 south of Stilwell - “The W. H. ‘Bill’ Langley, Sr. Memorial Highway” . H. J. R. 1020, Okla. Session Laws 1989, pg. 1655; Commission Item 82, 4-3-89.	1989

HIGHWAY NAME	DESCRIPTION	DATE
SH 99	Across Oklahoma - “Veterans Memorial Highway” . House Bill No. 1457, Okla. Session Laws 1989; 69 O.S. Supp. 1989, Sec. 1619, A; Commission Item 151, 7-5-89 and 48 (A), 3-5-90.	1989 1990
US 75	Between Tulsa and Henryetta - “American Wars Highway” . House Bill No. 1457, Okla. Session Laws 1989, pg. 200; 69 O.S. Supp. 1989, Sec. 1619, B; Amended S .J. R. 8, Okla. Session Laws 1997; Commission Item 151, 7-5-89 (Item deferred).	1989 1997
SH 20	From SH 11 east of Skiatook west to SH 18 east of Ralston - “Major General Clarence L. Tinker Memorial Highway” . S. C .R. 1, Okla. Session Laws 1989, pg. 1671; Commission Item 194 (B), 9-5-89. (PIC)	1989
SH 11	Bridge across Candy Creek south of Avant, Osage County - “Chief James Bigheart Memorial Bridge” . S. C .R. 2, Okla. Session Laws 1989, pg. 1672; Commission Item 194 (C), 9-5-89. (PIC)	1989
US 66 (Old Route) SH 66	Across Oklahoma - “Historic Route 66” . H. J . R. 1029, Okla. Session Laws 1989, pg. 1656; Commission Item 187, 9-5-89. (PIC)	1989
I-35	Bridge over the South Canadian River south of Norman - “Samuel King McCall Bridge” . Commission Item 48 (C), 3-5-90. (PIC)	1990
US 69	Bridges over Muddy Boggy Creek north of Atoka - southbound structure “Dr. Robert C. Dean Memorial Bridge” ; northbound structure “First Sergeant James McLeroy Memorial Bridge” . S. C. R. 91., Okla. Session Laws 1990, pg. 1944; Commission Item 157 (A), 7-9-90 and Item 32, 3-3-92. (PIC)	1990 1992
SH 156	Between US 77 in Noble County and US 60 in Kay County - “101 Ranch Memorial Road” . S. C. R. 80, Okla. Session Laws 1990, pg. 1945; Commission Item 157 (B), 7-9-90. (PIC)	1990

HIGHWAY NAME	DESCRIPTION	DATE
US 81	Across Garfield County - “Martin Garber Memorial Highway” . S. C. R. 110, Okla. Session Laws 1990, pg. 1952; Commission Item 157 (C), 7-9-90. (PIC)	1990
I-44	In Lawton - “Martin Luther King, Jr. Freeway” . (City of Lawton will be responsible for cost of signing.) Commission Item 224, 10-1-90. (PIC)	1990
SH 74	Between NW 70th Street and Memorial Road (Kilpatrick Turnpike) in Oklahoma City - “Lake Hefner Parkway” . Commission Item 45, 4-6-92. (PIC)	1992
US 62	Between Lawton and Altus - “The Quanah Parker Trailway” . Commission Item 71, 5-4-92. (PIC)	1992
SH 31	Bridge over Muddy Boggy Creek in Coal County - “The John O. Linton Bridge” . S. C. R. 72, Okla. Session Laws 1992, pg. 2284; Commission Item 72, 5-4-92 (Deferred) and Item 115, 7-1-92. (PIC)	1992
US 62	From Anderson Road to Harrah Road along NE 23rd Street in Oklahoma County - “John Miskelly, Jr. Memorial Highway” . H. C. R. 1059, Okla. Session Laws 1992; Commission Item 121 (A), 7-6-93. (PIC)	1992 1993
SH 1	Between Ada and Calvin - “The Captain Otho Butler Memorial Highway” . Commission Item 16, 2-1-93. (PIC)	1993
SH 97	Between Sapulpa and Sand Springs - “The Leon Bench Memorial Highway” . Commission Item 15, 2-1-93. (PIC)	1993
US 412 Cherokee Turnpike	From its new alignment west of the Locust Grove Area east to Flint Creek - “Scenic U.S. Highway 412” . House Bill 1476, Okla. Session Laws 1993 pg. 78; Commission Item 121 (C), 7-6-93.	1993

HIGHWAY NAME	DESCRIPTION	DATE
US 412	Bridges across the North Canadian River east of Woodward - “Trooper Billy G. Young Bridge” . S. C. R. 17, Okla. Session Laws 1993, pg. 2309; Commission Item 121 (B), 7-6-93. (PIC)	1993
US 69	Bridge over Buck Creek in Atoka County - “The Lawrence A. Edge Bridge” . S. C. R. 37, Okla. Session Laws 1994, pg. 2082; Commission Item 100 (A), 5-2-94. (PIC)	1994
SH 101	Beginning at SH 59 (US 59) and extending to the intersection of SH 101 and SH 64B, Sequoyah County - “Sequoyah Memorial Highway” . House Bill 2168, Okla. Session Laws 1994, pg. 114; Commission Item 100 (B), 5-2-94. (PIC)	1994
SH 89	Between SH 32 at Courtney and the Oklahoma/Texas State State Line - “Eldon B. Davis Memorial Highway” . Commission Item 172 (A), 9-46-94. (PIC)	1994
SH 89	Bridge across the Red River south of Courtney, Love County - “Taovayas Bridge” . Commission Item 172 (B), 9-6-94. (PIC)	1994
I-40 Bus.	Between SH 30 in Erick and I-40 (Exit) 11 - “Roger Miller Memorial Highway” . House Bill 2399, Sec. 2, Okla. Session Laws 1994, pg. 241; Commission Item 186 (A), 10-3-94. (PIC)	1994
SH 99	Across Pontotoc County - “Hugh Warren Memorial Highway” House Bill 2399, Sec. 1, Okla. Session Laws 1994, pg. 291; Commission Item 186 (B), 10-3-94.	1994
SH 97	Between Sand Springs and Sapulpa - “Marques Haynes Highway” . S. C. R. 48, Okla. Session Laws 1994, pg. 2093; Commission Item 186 (C), 10-3-94. (PIC)	1994

HIGHWAY NAME	DESCRIPTION	DATE
US 75	Bridge over Cedar Creek in Coal County - “ Orland Hammersly Bridge ”. H. C. R. 1118, Okla. Session Laws 1994, pg. 2134; Commission Item 186 (D), 10-3-94. (PIC)	1994
US 75	Bridge across Muddy Boggy Creek in Coal County - “ Roy Linton Bridge ”. H. C. R. 1120, Okla. Session Laws 1994, pg. 2135; Commission Item 186 (E), 10-3-94. (PIC)	1994
SH 66 (Old US 66)	Bridge across Catfish Creek west of Bristow in Creek County “ Donald J. Hurt Bridge ”. Commission Item 72, 5-1-95. (PIC)	1995
SH 131	Bridge across North Boggy Creek in Atoka County - “ Marvin Newberry Bridge ”. H. C. R. 1017, Okla. Session Laws 1995, pg. 2146; Commission Item 97 (A), 6-5-95. (PIC)	1995
SH 131	Bridge across Five Mile Creek in Atoka County - “ George L. Shields Bridge ”. H. C. R. 1018, Okla. Session Laws 1995, pg. 2146; Commission Item 97 (B), 6-5-95. (PIC)	1995
SH 63	Bridge across Chunn Creek in Pittsburg County - “ Henry A. Foris Bridge ”. H. C. R. 1038, Okla. Session Laws 1995, pg. 2165; Commission Item 97 (C), 4-5-95. (PIC)	1995
SH 20	From Salina to approximately one mile west of Salina - “ Carl Belew Memorial Highway ”. House Bill 1216, Okla. Session Laws 1995, pg. 221; Commission Item 97 (D), 6-5-95. (PIC)	1995
SH 101	From SH 64B east to the Arkansas State line - “ Thomas D. Peace Memorial Highway ”. House Bill 1613, Section 1, Okla. Session Laws 1995, pg. 278; Commission Item 203 (A), 11-6-95. (PIC)	1995
US 62, SH 10 & SH 82	From the junction of US 62 and SH 82 and SH 10 north to the Bertha Parker Bypass, south of Tahlequah - “ POW-MIA Memorial Highway ”. House Bill 1613, Sec. 2, Okla. Session Laws 1995, pg. 278; Commission Item 203 (B), 11-6-95. (PIC)	1995

HIGHWAY NAME	DESCRIPTION	DATE
SH 152	From Sayre to Oklahoma City - “Scenic Route of Western Oklahoma” . H. C. R. 1035, Okla. Session Laws 1995, pg. 2164. (PIC)	1995
SH 51 & SH 74	SH 51 from the junction of SH 74 west to the Kingfisher County line, and SH 74 from the junction of SH 51 north to The Garfield County line - “Angie Debo Memorial Highway” . H. C. R. 1093, Okla. Session Laws 1996, pg. 1909: Commission Item 139 (A), 8-5-96. (PIC)	1996
US 64	From the City of Pawnee west to US 177 - “Pawnee Bill Memorial Highway” . H. J. R. 1077, Okla. Session Laws 1996, pg. 1869; Commission Item 139 (B), 8-5-96. (PIC)	1996
SH 48	Bridge across Leader Creek in Pontotoc County - “Vernon Sweat Memorial Bridge” . H. C. R. 1099, Okla. Session Laws 1996, pg. 1921; Commission Item 139 (C), 8-5-96. (PIC)	1996
SH 1	Bridge across Muddy Boggy Creek in Pontotoc County - “The Pete Gray Memorial Bridge” . H. C. R. 1100, Okla. Session Laws 1996, pg. 1922; Commission Item 139 (D), 8-5-96. (PIC)	1996
US 283	From the North Fork of the Red River south to the Texas State line - “Old Greer County Highway” . S. C. R. 75, Okla. Session Laws 1996, pg. 1947; Commission Item 139 (E), 8-5-96.	1996
SH 74	Within the borders of Garfield County - “John N. ‘Happy’ Camp Memorial Highway” . S. J. R. 35, Okla. Session Laws 1996, pg. 1876; Commission Item 139 (F), 8-5-96. (PIC)	1996
SH 3E	The MacArthur Street Bridge in the City of Shawnee - “Pierre F. Taron, Jr. Bridge” . S. C. R. 73, Okla. Session Laws 1996, pg. 1946; Commission Item 139 (G), 8-5-96. (PIC)	1996

HIGHWAY NAME	DESCRIPTION	DATE
US 81	Across Oklahoma - “Chisholm Trail Highway” . S. J. R. 30, Okla. Session Laws 1996, pg. 1869. (PIC)	1996
US 75	From I-44 to the southern city limits of Glenpool - “Perryman Memorial Highway” . S. J. R. 8, Oklahoma Session Laws 1997, pg. 2831; Amending 69 O.S. 1991, Sec. 1619. (PIC)	1997
US 75	From the southern city limits of Glenpool to Henryetta - “Colonel John L. Hillman Parkway” . S. J. R. 8, Okla. Session Laws 1997, pg. 2831; Amending 69 O.S. 1991, Sec. 1619. (PIC)	1997
US 60	From Washington County line to junction of US 60 & SH 99 “Ben Johnson Memorial Highway” . H. C. R. 1045, Okla. Session Laws 1997, pg. 2898; Commission Item 146, 7-7-97.	1997
SH 33	From Cushing to Drumright - “Earl R. Gible Memorial Highway” . H. C. R. 1008, Okla. Session Laws 1997, pg. 2878. (PIC)	1997
SH 51	From US 81 to SH 132 in Kingfisher County - “Jack H. Choate Memorial Highway” . S. C. R. 39, Okla. Session Laws 1998, pg. 2420; Commission Item 74, 4-6-98. (PIC)	1998
I-35	From Memorial Road to Danforth Road - “Shannon Miller Parkway” . H. C. R. 1064, Okla. Session Laws 1998, pg. 2417; Commission Item 74, 4-6-98. (PIC)	1998
County Road	Washita River Bridge north of Alex - “Jakie Horn Memorial Bridge” . H. J. R. 1092, Okla. Session Laws 1998, pg. 2401.	1998
SH 47 & SH 47A	From Oklahoma/Texas State line to Cheyenne and SH 47A - “Black Kettle Memorial Highway” . H. J. R. 1075, Okla. Session Laws 1998, pg. 2407; Commission Item 111 (A), 6-1-98. (PIC)	1998

HIGHWAY NAME	DESCRIPTION	DATE
SH 1	Bridge across Sandy Creek southwest of Allen - “Harold L. Jennings Memorial Bridge” . H. C. R. 1111, Okla. Session Laws 1998, pg. 2476; Commission Item 131 (B), 7-6-98. (PIC)	1998
I-35	From the Interstate Highway 35 and Interstate Highway 40 Intersection southbound to the State line - “World War I Veterans Memorial Highway” . Senate Bill 854, Okla. Session Laws 1998, pg. 1435; Commission Item 131 (A), 7-6-98. (PIC)	1998
I-35	From the Interstate Highway 35 and Interstate Highway 40 Intersection northbound to the State line - “World War II Veterans Memorial Highway” . Senate Bill 854, Okla. Session Laws 1998, pg. 1435; Commission Item 131 (A), 7-6-98.	1998
I-40	From the Interstate Highway 35 and Interstate Highway 40 Intersection westbound to the State line - “Korean War Veterans Memorial Highway” . Senate Bill 854, Okla. Session Laws 1998, pg. 1435; Commission Item 131 (A), 7-6-98. (PIC)	1998
I-40	From the Interstate Highway 35 and Interstate Highway 40 Intersection eastbound to the State line - “Vietnam Veterans Memorial Highway” . Senate Bill 854, Okla. Session Laws 1998, pg. 1435; Commission Item 131 (A); 7-6-98. (PIC)	1998
US 59, US 259 and US 271	US 59 south of Interstate 40 in Sequoyah County and US 59, US 271 and US 259 within the boundaries of LeFlore County - “Mountain Gateway” . Senate Bill 673, Okla. Session Laws 1999, pg. 627; Commission Item 86 (B), 6-7-99. (PIC)	1999
SH 51	Between Broken Arrow and Coweta - “Dr. William R. Bright Bypass” . S. J. R. 21, Okla. Session Laws 1999, pg. 2099; Commission Item 86 (C), 6-7-99. (PIC)	1999

HIGHWAY NAME	DESCRIPTION	DATE
SH 51	Between US 75 in Tulsa County and the City limits of Coweta in Wagoner County - “Broken Arrow Expressway” . House Bill 1455, Okla. Session Laws 1999, pg. 917; Commission Item 104 (A), 7-6-99. (PIC)	1999
N. E. 23rd Street	Bridge across I-35 in Oklahoma City - “Dr. A. L. Dowell Bridge” . H. C. R. 1056, Okla. Session Laws 1999, pg. 2152; Commission Item 104 (B), 7-6-99. (PIC)	1999
SH 18	From Fairfax northbound to US 60 in Osage County - “Marjorie and Maria Tallchief Highway” . Senate Bill 1106, Okla. Session Laws 2000; Commission Item 97 (F), 6-5-00. (PIC)	2000
SH 18	From Fairfax southbound to SH 20 in Osage County - “Senator Frank Mahan Highway” . Senate Bill 1106, Okla. Session Laws 2000; Commission Item 97 (F), 6-5-00. (PIC)	2000
SH 107	Between I-235 and I-35 in Oklahoma City on N. 23 rd Street - “Clara Luper Corridor” . House Bill 2714, Okla. Session Laws 2000; Commission Item 97 (A), 6-5-00. (PIC)	2000
SH 82	Between SH 20 in Mayes County and SH 66 in Craig County - “Cliff Bogle Memorial Highway” . House Bill 2195, Okla. Session Laws 2000; Commission Item 97 (E), 6-5-00. (PIC)	2000
SH 127	Between SH 20 and SH 10 in Delaware County - “Sam Fields Memorial Highway” . House Bill 2446, Okla. Session Laws 2000; Commission Item 97 (D), 6-5-00. (PIC)	2000
I-40	Bridge across Little Deep Creek east of Weatherford - “Sparland Rose Memorial Bridge” . House Bill 2717, Okla. Session Laws 2000; Commission Item 97 (B), 6-5-00.	2000
US 281	Bridge Across East Cache Creek south of Apache in Caddo County - “Tom Manar Memorial Bridge” . H.C.R. 1098, Okla. Session Laws 2000; Commission Item 97 (C), 6-5-00.	2000

HIGHWAY NAME	DESCRIPTION	DATE
SH 77 & I-35 Interchange	Interchange of SH 77 and I-35 at Guthrie - “ Cleo Bradshaw Interchange ”. H. C. R. 1036, Okla. Session Laws 2001; Commission Item 112 (C), 7/2/01.	2001
US 169	Between Memorial Drive in the City of Tulsa and the Tulsa County line - “ Pearl Harbor Memorial Expressway ”. H. C. R. 1007, Okla. Session Laws 2001; Commission Item 112 (B), 7/2/01.	2001
SH 131	Bridge across Coal Creek east of Cairo in Coal County - “ John C. Farley Bridge ”. H. C. R. 1039, Okla. Session Laws 2001; Commission Item 112 (A), 7/2/01.	2001
SH 9	From US 69 in McIntosh County and extend west approximately 2 miles - “ J. M. Bailey Highway ”. Senate Bill 459, Okla. Session Laws 2001; Commission Item 92 (B), 6/24/01.	2001
US 59	Bridge across Grand Lake in Delaware County- “ Sailboat Bridge ”. Senate Bill 459, Okla. Session Law 2001; Commission Item 92 (C), 6/24/01.	2001

Chronological Guide to Memorial Bridges

(For alphabetical listing see Master Index)

Chronological Guide to Memorial Bridges

(For alphabetical listing see Master Index)

FACILITY	DESCRIPTION	DATE	PAGE
US 70	Roosevelt Memorial Bridge Lake Texoma/Washita River	1948 *	1
I-44	Homer X. White Memorial Bridge 51 st Street/Arkansas River	1952 *	1
SH 34	Johnston Murray Bridge Canadian River south of Camargo	1953 *	1
SH 51	Robert S. Kerr Bridge Verdigris River	1955 •	2
US 60	Julius W. Cox Bridge Cimarron River at Orienta	1956 *	2
SH 66	H. Tom Kight, Jr. Bridge Verdigris River	1956 *	2
SH 51	L.A. Ferrel Memorial Bridge Skeleton Creek E. of Hennessey	1956 *	2
SH 30	Louis Tittle Bridge North Fork Red River N. of Erick	1956 *	2
US 281	Raymond Gary Bridge Cimarron River S. of Waynoka	1956 *	2
SH 51	Old Fort Cantonment Crossing North Canadian River east of Canton	1956 *	2
SH 58	Senator Don Baldwin Bridge Deer Creek south of Hydro	1957 *	3
SH 6	Louis M. Tittle Bridge North Fork Red River N. of Granite	1957 *	3

FACILITY	DESCRIPTION	DATE	PAGE
SH 74	Velvie Bridal Bridge Cimarron River south of Crescent	1957 *	3
US 183	Emma Gary Bridge Canadian River at Taloga	1957 *	3
US 177	C. A. 'Bud' Stoldt Bridge Chickaskia River at Blackwell	1957 *	3
SH 8	Stanley Coppock Bridge Salt Fork of the Arkansas River N. of Cherokee	1958*	3
SH 132	Bruce Perry Memorial Bridge Turkey Creek north of Drummond	1960 °	3
US 259	D. I. McCullough Bridge Red River	1961 •	4
SH 22	Cowboy Pink Williams Bridge Blue River/Bryan County	1961 •	4
US 81	Roy C. Boecher Bridge Cimarron River	1962 *	4
SH 20	Jean Pierre Chouteau Bridge Grand River west of Salina	1963 ▲	4
US 59	Ed McDonald Bridge Arkansas River south of Sallisaw	1963 ▲	5
SH 34	J. O. Selman Bridge North Canadian River N. of Woodward	1965 *	5
US 77	C. Hubert Gragg Bridge Walnut Creek in Purcell	1966 *	5
US 77	James C. Nance Bridge Canadian River east of Purcell	1967 •	5
SH 58	Hop Bell Bridge Medicine Lodge River W. of Bryon	1967 *	5

FACILITY	DESCRIPTION	DATE	PAGE
US 270	Allen G. Nichols Bridge Canadian River N. of Calvin	1968 *	6
SH 51	Wyche B. Murphy Bridge Cimarron River west of Mannford	1969 *	6
SH 50	Omer Schnoebelin Bridge North Canadian River SW of Mooreland	1970 *	6
SH 3 (Old SH 19)	C. B. Memminger Bridge Muddy Boggy Creek W. of Farris	1970 1933 •	6
SH 64	Ray Fine Bridge Arkansas River east of Webber's Falls	1972 *	6
SH 93	Carl Albert Bridge Kiamichi River	1973 •	7
SH 108	Allen Williamson Bridge Cimarron River north of Ripley	1974 *	7
SH 3E	Gene Rainbolt Bridge North Canadian River east of Shawnee	1975 *	7
US 412	Dan P. Holmes Bridge Verdigris River Nav. Channel	1975 *	7
SH 48	Hugh M. Sandlin Bridge Canadian River east of Allen	1975 •	8
US 177	Lee Kirk Bridge Cimarron River south of Perkins	1976 *	8
SH 33	Robert M. Murphy Bridge Cimarron River E. of Perkins	1977 *	8
SH 99	John Quimby Wilson Bridge Wewoka Creek south of Seminole	1977 •	8
SH 104	Choska Bridge Arkansas River east of Haskell	1978 *	8

FACILITY	DESCRIPTION	DATE	PAGE
US 283	Mark “Buzz” Bradshaw - Packsaddle Bridge South Canadian River	1979 •	8
Old SH 77H (Reno Avenue)	Frank Lynch Bridge I-35 & Reno Ave.	1980 *	9
SH 50	Louis M. Kamas Bridge Cimarron River at Woods C/L	1980 ▲	9
US 81	James H. Gungoll Bridge Vance Air Force Base Exit	1980 *	9
S. 71 st St. (Old SH 117)	William R. Nash Bridge Arkansas River in Tulsa	1983 *	10
SH 270	Oliver C. Walker Bridge North Canadian River at Dale	1983 *	10
Beard St. (Old SH 18)	James W. Allen Bridge North Canadian River	1984 *	10
US 70	Frank M. Fodge Bridge Boggy Creek west of Soper	1984 •	11
US 75	Jack Herring Bridge North Canadian River N. of Wetumka	1984 •	11
Ash Creek Road	Frank Glenn Bridge Latimer Co./Robber’s Cave State Park	1984 •	11
SH 33	Marion Diel Bridge South Canadian River E. of Thomas	1985 *	11
US 60	William J. King Bridge Deer Creek west of I-35	1985 ▲	11
SH 9A	Tom Traw Bridge Poteau River at Arkoma	1985 ▲	11
US 60	Floyd E. Carrier Bridge Turkey Creek east of Lahoma	1987 *	12

FACILITY	DESCRIPTION	DATE	PAGE
SH 99	Haney-Abbott Bridge South Canadian River at Pontotoc C/L	1988 ▲	12
SH 44	Victor Wickersham Bridge North Fork Red River at Kiowa C/L	1988 • 1999 ▲	13
US 59	Joe A. Johnson Bridge Poteau River south of Heavener	1988 •	13
SH 56	J. O. “Cotton” Smith Bridge North Canadian River at Okfuskee C/L	1988 • 1990 *	13
US 64	Bixby Spartan Pass Arkansas River at Bixby	1989 *	13
SH 11	Chief James Bigheart Memorial Bridge Candy Creek south of Avant	1989 ▲	14
I-35	Samuel King McCall Bridge South Canadian River south of Norman	1990 *	14
US 69	Dr. Robert C. Dean Memorial Bridge First Sgt. James McLeroy Bridge Muddy Boggy Creek north of Atoka	1990 ▲ 1992 *	14
SH 31	John O. Linton Bridge Muddy Boggy Creek in Coal County ⁷	1992 ▲	15
US 412	Trooper Billy G. Young Bridge North Canadian River east of Woodward	1993 ▲	16
US 69	Lawrence A Edge Bridge Buck Creek in Atoka County	1994 ▲	16
SH 89	Taovayas Bridge Red River south of Courtney	1994 *	16
US 75	Orland Hammersly Bridge Cedar Creek in Coal County	1994 ▲	17
US 75	Roy Linton Bridge Muddy Boggy Creek in Coal County	1994 ▲	17

FACILITY	DESCRIPTION	DATE	PAGE
SH 66	Donald J. Hurt Bridge Catfish Creek west of Bristow	1995 *	17
SH 131	Marvin Newberry Bridge North Boggy Creek in Atoka Co.	1995 ▲	17
SH 131	George L. Shields Bridge Five Mile Creek in Atoka Co.	1995 ▲	17
SH 63	Henry A. Foris Bridge Chunn Creek in Pittsburg Co.	1995 ▲	17
SH 48	Vernon Sweat Bridge Leader Creek in Pontotoc Co.	1996 ▲	18
SH 1	Pete Gray Memorial Bridge Muddy Boggy Creek in Pontotoc Co.	1996 ▲	18
SH 3E	Pierre F. Taron, Jr. Bridge MacArthur Street in Shawnee	1996 ▲	18
County Road	Jakie Horn Memorial Bridge Washita River north of Alex	1998 •	19
SH 1	Harold L. Jennings Memorial Bridge Sandy Creek SW of Allen	1998 ▲	20
NE 23 rd Street (Over I-35)	Dr. A. L. Dowell Bridge NE 23 rd Street and I-35 in OKC	1999 ▲	21
I-40	Sparland Rose Memorial Bridge Little Deep Creek east of Weatherford	2000 ▲	21
US 281	Tom Manar Memorial Bridge East Cache Creek south of Apache	2000 ▲	21
SH 77 & I-35 Interchange	Cleo Bradshaw Interchange SH 77 and I-35 Interchange at Guthrie	2001 ▲	22
SH 131	John C. Farley Bridge Coal Creek east of Cairo	2001 ▲	22

FACILITY	DESCRIPTION	DATE	PAGE
US 59	Sailboat Bridge Grand Lake in Delaware County	2001 ▲	22

- * **Transportation Commission action**
- **Legislative action**
- ▲ **Legislative and Transportation Commission action**
- **Authorizing action unknown**

**Chronological Guide
to
Memorial Highways**

(For alphabetical listing see Master Index)

Chronological Guide to Memorial Highways

(For alphabetical listing see Master Index)

FACILITY	DESCRIPTION	DATE	PAGE
US 69	Jean Pierre Chouteau Highway Statewide	1947 *	1 & 6
US 77	Blue Star Memorial Highway Statewide	1951 •	1
Old US 60	Frank Phillips Boulevard City of Bartlesville	1951 *	1
US 81	Fox Drive Connection to Vance Air Force Base	1951*	1
SH 77S	SH 77 Scenic Lake Murray and vicinity	1951 * 1952 * 1964 * 1974 *	1
US 64	Kit Carson Highway Statewide	1953 *	1
SH 18	Oscar Sewell Drive City of Pawnee	1954 *	2
SH 80	Nathan Boone Highway Fort Gibson and vicinity	1955 *	2
I-44	Will Rogers Turnpike Between Tulsa and Missouri State line	1955 •	2
I-44	Turner Turnpike Between Oklahoma City and Tulsa	1955 •	2
I-35	Raymond Gary Expressway Statewide	1957 •	3

FACILITY	DESCRIPTION	DATE	PAGE
SH 16	Shibley Highway Between Drumright and Bristow	1953 *	3
I-40 Bus.	Raymond Gary Freeway City of Clinton	1958 *	3
US 281	American Legion Memorial Highway Statewide	1959 • 1960 *	3
US 56	Santa Fe Trail Highway Statewide	1961 *	4
SH 117	Heber Finch, Jr. Highway City of Sapulpa	1963 •	4
US 270	Gordon Cooper Expressway Shawnee Bypass-City of Shawnee	1963 *	4
SH 47	Jody S. Moad Highway Between Roll and the Roger Mills/Dewey County line	1963 ▲	4
SH 47	S. S. McColgin Highway Between the Texas State line And Roll in Roger Mills County	1963 ▲	4
SH 2	Jim Cook Highway Between Wilburton and the Latimer/Haskell County line	1963 ▲	4
SH 51	42nd 'Rainbow' Infantry Division Memorial Highway Statewide	1963 * 1998 ▲ 1999 ▲	5
SH 1	Robert S. Kerr Skyline Drive Between US 271 and the Arkansas State line in LeFlore County	1963 *	5
US 77	Henry S. Johnston Memorial Highway City of Perry	1965 *	5

FACILITY	DESCRIPTION	DATE	PAGE
SH 88	Coo-Wee-Scoo-Wee Parkway Between US 169 and the Will Rogers Memorial in Rogers County	1967 •	5
SH 1	Talimena Scenic Drive Across LeFlore County	1968 *	6
SH 3E SH 1	J. A. Richardson Loop Northwest quadrant Ada Bypass-City of Ada	1968 •	6
US 70 Bypass	Jumper Memorial Highway Idabel Bypass-City of Idabel	1970 *	6
US 77	Dwight F. Whelan Memorial Highway Broadway Extension in OKC & Edmond	1972 •	7
SH 69A	Lyndon Baines Johnson Memorial Highway Between US 69 and the Mid-America Industrial Complex in Mayes County	1974 •	7
US 412	Owen K. Garriott Road City of Enid	1975 •	7
US 60	Mabelle Kennedy Highway Between Pawhuska and the Arkansas River	1975 *	7
SH 51	Jim Thorpe Memorial Highway Between SH 18 west of Yale and US 64 near the Keystone Dam	1975 ▲	8
I-40	Ray Fine Memorial Highway Between Roland and Moffett in Sequoyah County	1976 *	8
SH 10	Paul Carlile Road Between I-40 and US 64 in Sequoyah County	1977 *	8

FACILITY	DESCRIPTION	DATE	PAGE
SH 56	Seminole Nation Highway Across Seminole County	1979 ▲	9
SH 93	Ben Haskins Memorial Highway Between the Choctaw/Pushmataha County line and Hugo Lake in Choctaw County	1979 *	9
US 77	Flavel D. Perry Highway Ponca City north to SH 11 in Kay County	1980 *	9
SH 3	Northwest Passage Between the State Capitol and the Colorado State line	1981 *	9
US 62	Bertha Parker Bypass SE quadrant Tahlequah Bypass-City of Tahlequah	1981 ▲	9
I-40	Tom Steed Memorial Highway Between Oklahoma City and Shawnee	1983 ▲	10
US 412 US 412 Alt. (Old SH 33)	Dan P. Holmes Memorial Highway Between I-44 in Tulsa and the Arkansas State line	1984 *	10
I-244	Martin Luther King, Jr. Memorial Expressway Between I-44 junctions in City of Tulsa	1984 *	10
SH 66	Admiral Joe ‘Jocko’ Clark Trailways Between Bushyhead and White Oak	1984 *	10
SH 3 Bypass	Cecil B. ‘Bud’ Greathouse Bypass City of Atoka and vicinity	1984 *	10
I-35	Honey Creek Pass Through Arbuckle Mountains in Murray and Carter Counties	1984 •	10

FACILITY	DESCRIPTION	DATE	PAGE
Lake Access Rd.	Roy Grantham Memorial Road Between US 77 and Kaw Reservoir	1985 ▲	11
SH 99	John Dahl Avenue Pawhuska Bypass-City of Pawhuska	1985 *	11
SH 66	Clem McSpadden Highway Between Claremore and Busyhead in Rogers County	1985 *	11
US 70	Jake Pullen Bypass Hugo Bypass-City of Hugo	1985 *	11
US 69	George Nigh Expressway Across Pittsburg County	1986 ▲	12
SH 66	Route 66 Memorial Highway Across Lincoln County	1986 •	12
US 412	Cimarron Highway Between I-244 in Tulsa and US 270 in Woodward	1987 *	12
SH 123	Frank Phillips Memorial Highway Between SH 11 and US 60 in Osage County	1987 *	12
US 60	E. W. Marland Memorial Highway From the Arkansas River Bridge south of Ponca City west to the Grant County line In Kay County	1988 *	12
SH 3	45th Infantry Division Memorial Highway Statewide	1988 ▲ 1989 ▲ 1992 •	12
I-235	Centennial Expressway City of Oklahoma City	1988 *	12
US 59	Mick Thompson Road City of Poteau	1988 •	13

FACILITY	DESCRIPTION	DATE	PAGE
SH 112	B. L. Klutts Highway Between Arkoma and Pocola in LeFlore County	1988 • 1995 *	13
US 69	Lakeshore Parkway Statewide	1989 *	13
SH 10	Illinois River Scenic Drive Between Tahlequah and Kansas in Cherokee and Delaware Counties	1989 *	13
SH 100	W. H. 'Bill' Langley Sr. Memorial Highway Between the Adair/Cherokee County line And US 59 south of Stilwell	1989 ▲	13
SH 99	Veterans Memorial Highway Statewide	1989 ▲ 1990 *	14
US 75	American Wars Highway Between Tulsa and Henryetta	1989 ▲ 1997 •	14
SH 20	Major General Clarence L. Tinker Memorial Highway From SH 11 east of Skiatook west to SH 18 east of Ralston in Osage County	1989 ▲	14
SH 66 (Old US 66)	Historic Route 66 Statewide	1989 ▲	14
SH 156	101 Ranch Memorial Road Between US 77 in Noble County and US 60 in Kay County	1990 ▲	14
US 81	Martin Garber Memorial Highway Across Garfield County	1990 ▲	15
I-44	Martin Luther King, Jr. Freeway City of Lawton	1990 *	15

FACILITY	DESCRIPTION	DATE	PAGE
SH 74	Lake Hefner Parkway Between NW 70 th Street and Memorial Road in Oklahoma City	1992 *	15
US 62	Quanah Parker Trailway Between Lawton and Altus	1992 *	15
US 62	John Miskelly, Jr. Memorial Highway From Anderson Road to Harrah Road in Oklahoma County	1992 • 1993 *	15
SH 1	Captain Otho Butler Memorial Highway Between Ada and Calvin in Hughes and Pontotoc Counties	1993 *	15
SH 97	Leon Bench Memorial Highway Between Sapulpa and Sand Springs in Creek and Tulsa Counties	1993 *	15
US 412 Cherokee Tpk.	Scenic U.S. Highway 412 Locust Grove area east to Flint Creek in Delaware and Mayes Counties	1993 ▲	15
SH 101	Sequoyah Memorial Highway US 59 east to SH 64B in Sequoyah County.	1994 ▲	16
SH 89	Eldon B. Davis Memorial Highway Between SH 32 and the Texas State line in Love County	1994 *	16
I-40 Bus.	Roger Miller Memorial Highway City of Erick SH 99	1994 ▲	16
SH 99	Hugh Warren Memorial Highway Across Pontotoc County	1994 ▲	16
SH 97	Marques Haynes Highway Between Sand Springs and Sapulpa in Creek and Tulsa Counties	1994 ▲	16

FACILITY	DESCRIPTION	DATE	PAGE
SH 20	Carl Belew Memorial Highway City of Salina	1995 ▲	17
SH 101	Thomas D. Peace Memorial Highway From SH 64B to the Arkansas State line in Sequoyah County	1995 ▲	17
US 62	POW-MIA Memorial Highway From SH 82 south of Tahlequah north to the Bertha Parker Bypass	1995 ▲	17
SH 152	Scenic Route of Western Oklahoma From Sayre to Oklahoma City	1995 •	18
SH 51 SH 74	Angie Debo Memorial Highway SH 51 from the junction of SH 74 west to the Kingfisher County line and SH 74 from the junction of SH 51 north to the Garfield County line	1996 ▲	18
US 64	Pawnee Bill Memorial Highway From the City of Pawnee west to US 177	1996 ▲	18
US 283	Old Greer County Highway From the North Fork of the Red River south to the Texas State line in Beckham, Greer and Jackson Counties	1996 ▲	18
SH 74	John N. ‘Happy’ Camp Memorial Highway Across Garfield County	1996 ▲	18
US 81	Chisholm Trail Highway Statewide	1996 •	19
US 75	Perryman Memorial Highway From I-44 in Tulsa south to Glenpool	1997 •	19

FACILITY	DESCRIPTION	DATE	PAGE
US 75	Colonel John L. Hillman Parkway From south city limits of Glenpool south to Henryetta	1997 •	19
US 60	Ben Johnson Memorial Highway From the Washington County line to the junction of US 60-SH99 in Osage County	1997 ▲	19
SH 33	Earl R. Gibble Memorial Highway From Cushing to Drumright in Creek and Payne Counties	1997 •	19
SH 51	Jack H. Choate Memorial Highway From US 81 to SH 132 in Kingfisher County	1998 ▲	19
I-35	Shannon Miller Parkway From Memorial Road to Danforth Road In Oklahoma County	1998 ▲	19
SH 47 SH 47A	Black Kettle Memorial Highway From the Texas State line east to City of Cheyenne and SH 74A at The Battle of the Washita Historic Site	1998 ▲	19
I-35	World War I Veterans Memorial Highway From I-40 south to the State line	1998 ▲	20
I-35	World War II Veterans Memorial Highway From I-40 north to the State line	1998 ▲	20
I-40	Korean War Veterans Memorial Highway From I-35 west to the State line	1998 ▲	20
I-40	Vietnam Veteran Memorial Highway From I-35 east to the State line	1998 ▲	20

FACILITY	DESCRIPTION	DATE	PAGE
US 59	Mountain Gateway	1999 ▲	20
US 259	US 59 from I-40 south in Sequoyah		
US 271	County and US 59, US 271, and US 259 Across LeFlore County		
SH 51	William R. Bright Bypass	1999 ▲	20
	Between Broken Arrow and Coweta		
SH 51	Broken Arrow Expressway	1999 ▲	21
	Between US 75 in Tulsa County and the city limits of Coweta in Wagoner County		
SH 18	Marjorie and Maria Tallchief Highway	2000 ▲	21
	From Fairfax north to US 60 in Osage County		
SH 18	Senator Frank Mahan Highway	2000 ▲	21
	From Fairfax south to SH 20 in Osage County		
SH 107	Clara Luper Corridor	2000 ▲	21
	Between I-235 and I-35 in Oklahoma City on N. 23 rd Street		
SH 82	Cliff Bogle Memorial Highway	2000 ▲	21
	Between SH 20 in Mayes County And SH 66 in Craig County		
SH 127	Sam Fields Memorial Highway	2000 ▲	21
	Between SH 20 and SH 10 in Delaware County		
US 169	Pearl Harbor Memorial Expressway	2001 ▲	22
	Between Memorial Drive in the City of Tulsa and the Tulsa County line		
SH 9	J. M. Bailey Highway	2001 ▲	22
	From US 69 in McIntosh County and extend west approximately 2 miles		

- * **Transportation Commission action**
- **Legislative action**
- ▲ **Legislative and Transportation Commission action**
- **Authorizing action unknown**

CHAPTER 15. HIGHWAY PLANNING

730:15-1-9. Dedications and commendations

(a) Highway, bridges, and other facilities which are part of the highway system may be considered for dedication in honor of an individual deserving of commendation for their active involvement in the project or for outstanding service to the nation, this state, or their community. Persons proposed to be so honored shall have been deceased not less than five years prior to consideration. Proposals for the dedication of highway facilities should specifically state the accomplishments upon which the proposal is based.

(b) Local governments and civic groups may propose resolutions commending persons actively involved in the projects and such persons may be recognized at the time of dedication. The Department shall not place any sign or other memorial on any highway facility except as may be specifically authorized by the Commission, however, appropriate memorials such as plaques may be placed in a location of local interest or exposure by the civic organization or local government to constitute a permanent record of the individuals's contribution to the project.

Extracted from Oklahoma Administrative Code, Title 730 dated 1996

Legislative and Transportation Commission Actions By Year

- 1933**, see Senate Extra Ordinary Session, S.R. 15, SH 19, **C. B. Memminger**
- 1947**, see Commission Item US 69, P.59846, US 69, **Jean Pierre Chouteau**
- 1948**, see Commission Item 83, US 70, **Franklin D. Roosevelt**
- 1951**, see Senate, S.J.R. 12, US 77, **Blue Star**
- 1951**, see Commission Item 346, Old US 60, **Frank Phillips**
- 1951**, see Commission Item 525, US 81, **Fox Drive**
- 1951**, see Commission Item 529, SH 77S, **SH 77 Scenic**
- 1952**, see Commission Item 533, SH 77S, **SH 77 Scenic**
- 1952**, Commission Item 39, I-44, **Homer X. White**
- 1953**, see Commission Item 151, US 64, **Kit Carson**
- 1953**, see Commission Item 578, SH 34, **Johnston Murray**
- 1954**, see Commission Item 144, SH 18, **Oscar Sewell**
- 1955**, see Commission Item 485, SH 80, **Nathan Boone**
- 1955**, see House, H.J.R. 523, I-44, **Will Rogers**
- 1955**, see House, H.J.R. 523, I-44, **Roy Turner**
- 1955**, see Senate, S.J.R. 45, SH 51, **Robert S. Kerr**
- 1956**, see Commission Item 481, US 60, **Julius W. Cox**
- 1956**, see Commission Item 562, SH 66, **H. Tom Kight, Jr.**
- 1956**, see Commission Item 566, SH 51, **L. A. Ferrel**
- 1956**, see Commission Item 784, SH 30, **Louis Tittle**
- 1956**, see Commission Item 802, US 281, **Raymond Gary**
- 1956**, see Commission Item 917, SH 51, **Old Fort Cantonment**
- 1957**, see Commission Item 402, SH 58, **Don Baldwin**
- 1957**, see Commission Item 487, SH 6, **Louis M. Tittle**
- 1957**, Commission Item 591, SH 74, **Velvie Bridal**
- 1957**, Commission Item 592, US 183, **Emma Gary**
- 1957**, see Commission Item 687, US 177 & SH 11, **C.A. 'Bud' Stoldt**
- 1957**, see House, H.J.R. 530, I-35, **Raymond Gary**
- 1958**, see Commission Item 801, SH 8, **Stanley Coppock**
- 1958**, See Commission Item 817, SH 16, **Sibley Highway**
- 1958**, see Commission Item 777, I-40 Bus., **Raymond Gary**
- 1959**, see House, H.J.R. 514, US 281, **American Legion**
- 1961**, see Commission Item 98, US 56, **Santa Fe Trail**
- 1961**, see Senate, S.J.R. 28, US 259, **D. I. McCullough**
- 1961**, see Senate S.J.R.35, SH 22, **Cowboy Pink Williams**
- 1963**, see House, H.J.R. 546, SH 117, **Heber Finch, Jr.**

1963, see Commission Item E-156, US 270,
Gordon Cooper
1963, see Senate, S.J.R. 552, SH 47,
Jody S. Moad
1963, see Commission Item 156, SH 47,
Jody S. Moad
1963, see House, H.J.R. 552, SH 47,
S.S. McColgin
1963, see Commission Item 156, SH 47,
S.S. McColgin
1963, see House, H.J.R. 51, SH 2,
Jim Cook
1963, see Commission Item 155, SH 2,
Jim Cook
1963, see Senate, S.J.R. 63, SH 20,
Jean Pierre Chouteau
1963, see Commission Item 154, SH 20,
Jean Pierre Chouteau
1963, see Senate, S.J.R. 28, US 59,
Ed McDonald
1963, see Commission Item 153, US 59,
Ed McDonald
1963, see Commission Item 60, SH 51,
42nd Infantry Division
1963, see Commission Item 22, SH 1,
Robert S. Kerr
1964, see Commission Item 150, SH 77S,
SH 77 Scenic
1965, see Commission Item 62-E, US 77,
Henry S. Johnston
1965, see Commission Item 97, SH 34,
J. O. Selman
1966, see Commission Item 224, US 77,
C. Hubert Gragg
1967, see House, H.J.R. 525, US 77,
James C. Nance
1967, see Senate, S.J.R. 23, SH 88,
Coo-Wee-Scoo-Wee
1967, see Commission Item 100, SH 58,
Hop Bell
1968, see Commission Item E-243, US 270,
Allen G. Nichols
1968, see Commission Item 190, SH 1,
Talimena Scenic Drive
1968, see Senate, S.J.R. 68, SH 3E & SH 1,
J. A. Richardson
1969, see Commission Item 84, SH 51,
Wyche B. Murphy
1970, see Commission Item 55, SH 50,
Omer Schnoebelin
1970, see Commission Resolution 11-6-70,
US 70 Bypass, **Virgil Jumper**
1971, see Commission Item 28, US 69,
Jean Pierre Chouteau
1972, see Commission Item E-59, US 64,
Ray Fine
1972, House, H. C. R. 1064,
D. F. Whelan
1973, see Commission Item 56, SH 108,
Allen Williamson
1973, see House, H.J.R. 1022, SH 93,
Carl Albert
1974, see Senate, S.J.R. 9, SH 69A,
Lyndon Baines Johnson
1974, see Commission Item 40, SH 77S,
SH 77 Scenic
1975, see House, H.C.R. 1030, US 60 &
US 412, **Owen K. Garriott**
1975, see Commission Item 115, SH 3E,
Gene Rainbolt
1975, see Commission Item 152 (a), US 60,
Mabelle Kennedy
1975, see Commission Item 152 (b), US
412, **Dan P. Holmes**
1975, see House, H.C.R. 1028, SH 51,
Jim Thorpe
1975, see Commission Item 174, SH 51,
Jim Thorpe
1975, see House, H.J.R. 1011, SH 48,
Hugh M. Sandlin
1976, see Commission Item 102, I-40,
Ray Fine
1976, See Commission Item 252, US 177,
Lee Kirk
1977, see Commission Item 32 (b), SH 33,
Robert M. Murphy
1977, see Senate, S.J.R.m9, SH 99,
John Quimby Wilson

- 1977, see Commission Item 157, SH 10,
Paul Carlile
- 1978, see Commission Item 208, SH 104,
Choska Bottom
- 1979, see House, H.C.R. 1026, US 283,
Mark “Buzz” Bradshaw
- 1979, see House, H.C.R. 1028, SH 56,
Seminole Nation
- 1979, see Commission Item 102, SH 56,
Seminole Nation
- 1979, see Commission Item 161, SH 93,
Ben Haskins
- 1980, see Commission Item 47, US 77,
Flavel D. Perry
- 1980, see Commission Item 98, Old SH
77H, **Frank Lynch**
- 1980, see House, H.R. 1063, SH 50,
Louis Kamas
- 1980, see Commission Item 116, SH 50,
Louis Kamas
- 1980, see Commission Item 210, US 81,
James H. Gungoll
- 1981, see Commission Item 18 (e), SH 3,
Northwest Passage
- 1981, see Senate, S.C.R. 16, US 62,
Bertha Parker
- 1981, see Commission Item 86, US 62,
Bertha Parker
- 1982, see Commission Item 123, S. 71st St.
In Tulsa, **William R. Nash**
- 1983, see Commission Item 137, SH 270,
Oliver C. Walker
- 1983, see House, H.C.R. 1023, I-40,
Tom Steed
- 1983, see Commission Item 172, I-40,
Tom Steed
- 1984, see Commission Item 30, US 412 &
SH 33, **Dan P. Holmes**
- 1984, see Commission Item 30, I-244,
Martin Luther King, Jr.
- 1984, see Commission Item 149, SH 66,
Joe ‘Jocko’ Clark
- 1984, see Commission Item 150, Old
SH 18, **James W. Allen**
- 1984, see Commission Item 170, SH 3
Bypass, **Cecil B. ‘Bud’ Greathouse**
- 1984, see Senate, S.C.R. 30, I-35,
Honey Creek Pass
- 1984, see Senate, S.C.R. 32, US 70,
Frank M. Fodge
- 1984, see House, H.R. 1057, Ash Creek
Road, **Frank Glenn**
- 1984, see Senate, S.C.R. 31, US 75,
Jack Herring
- 1985, see Senate, S.C.R. 12, Lake Access
Road, **Roy Grantham**
- 1985, see Commission Item 44, Lake
Access Road, **Roy Grantham**
- 1985, see Commission Item 75, SH 33,
Marion Diel
- 1985, see House, H.R. 1010, US 60,
William J. King
- 1985, see Commission Item 80, US 60,
William J. King
- 1985, see House, H.C.R. 1004, SH 9A,
Tom Traw
- 1985, see Commission Item 80, SH 9A,
Tom Traw
- 1985, see Commission Item 110, SH 99,
John Dahl
- 1985, see Commission Item 175, SH 66,
Clem McSpadden
- 1985, see Commission Item 192, US 70,
Jake Pullen
- 1986, see Senate, S.C.R. 44, US 69,
George Nigh
- 1986, see Commission Item 33, US 69,
George Nigh
- 1986, see House, H.R. 1051, SH 66,
Route 66
- 1987, see Commission Item 5 (a), US 412,
Cimarron Highway
- 1987, see Commission Item 5 (b), US 60,
Floyd E. Carrier
- 1987, see Commission Item 164, SH 123,
Frank Phillips
- 1988, see Commission Item 27, US 60,
E. W. Marland

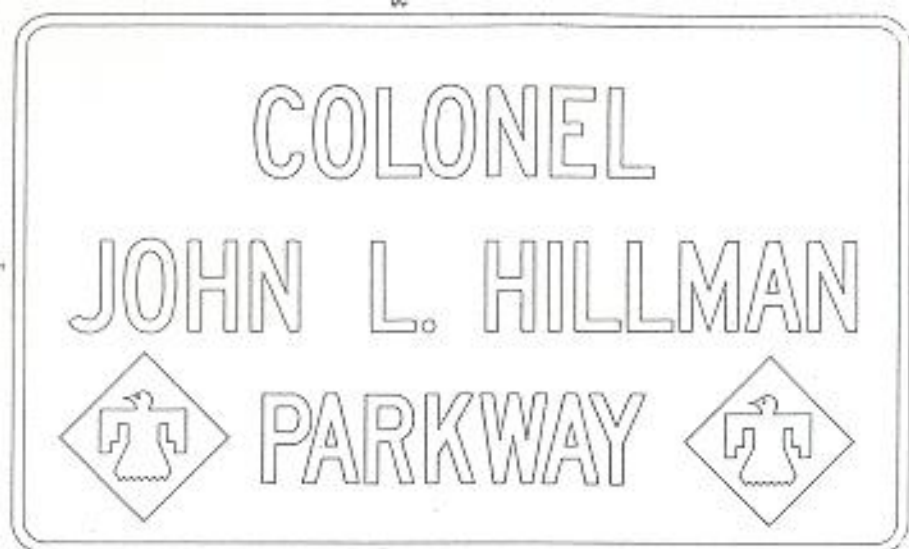
1988, see Senate, S.C.R. 93, SH 3,
45th Infantry Division
1988, see Commission Item 88, SH 3,
45th Infantry Division
1988, see Commission Item 134, I-235,
Centennial Expressway
1988, see Senate, S.C.R. 97, SH 99,
Lonnie Abbott & Enoch Kelly Haney
1988, see Senate, S.C.R. 98, SH 44,
Victor Wickersham
1988, see House, H.C.R. 1086, US 59,
Joe A. Johnson
1988, see House, H.C.R. 1087, US 59,
Mick Thompson
1988, see House, H.C.R. 1088, SH 112,
B.L. Klutts
1988, see House, H.C.R. 1107, SH 56,
J. O. “Cotton” Smith
1989, see Commission Item 38, US 64,
Bixby Spartan Pass
1989, see Commission Item 80, US 69,
Lakeshore Parkway
1989, see Commission Item 81, SH 10,
Illinois River Scenic Drive
1989, see House, H.J.R. 1020, SH 100,
W. H. Langley, Sr.
1989, see House Bill 1457, SH 99,
Veterans Memorial Highway
1989, see Commission Item 151, SH 99,
Veterans Memorial Highway
1989, see House Bill 1457, US 75,
American Wars
1989, see Commission Item 151, US 75
American Wars
1989, see Senate, S.C.R. 1, SH 20,
Clarence L. Tinker
1989, see Commission Item 194 (b),
SH 20, **Clarence L. Tinker**
1989, see Commission Item 194 (c),
SH 11, **Chief James Bigheart**
1989, see Senate, S.C.R. 7, SH 3,
45th Infantry Division
1989, see Commission Item 194 (d),
SH 3, **45th Infantry Division**
1989, see House, H.J.R. 1029, SH 66 &
Old US 66, **Historic Route 66**
1989, see Commission Item 187, SH 66
& Old US 66, **Historic Route 66**
1989, see Commission Item 48 (a), SH99,
Veterans Memorial Highway
1990, see Commission Item 48 (c), I-35,
Samuel King McCall
1990, see Senate, S.C.R. 91, US 69,
Dr. Robert C. Dean
1990, see Senate, S.C.R. 91, US 69,
James McLeroy
1990, see Senate, S.C.R. 91, US 69,
James McLeroy
1990, see Commission Item 157 (a),
Dr. Robert C. Dean
1990, see Commission Item 157 (a),
James McLeroy
1990, see Senate, S.C.R. 80, SH 156,
101 Ranch
1990, see Commission Item 157 (b), SH 156,
101 Ranch
1990, see Senate, S.C.R. 110, US 81,
Martin Garber
1990, see Commission Item 157 (c), US 81,
Martin Garber
1990, see Commission Item 112, SH 56,
J. O. ‘Cotton’ Smith
1990, see Commission Item 224, I-44,
Martin Luther King, Jr.
1992, see Commission Item 45, SH 74,
Lake Hefner Parkway
1992, see Senate, S.C.R. 64, SH 3, **45th**
Infantry Division
1992, see Commission Item 71, US 62,
Quanah Parker
1992, see Senate, S.C.R. 72, SH 31,
John O. Linton
1992, see Commission Items 72 & 115,
SH 31, **John O. Linton**
1992, see Commission Item 32, US 69,
Dr. Robert C. Dean
1992, see Commission Item 32, US 69,
James McLeroy

1992, see House, H.C.R. 1059, US 62,
John Miskelly, Jr.
1993, see Commission Item 121 (a), US 62,
John Miskelly, Jr.
1993, see Commission Item 16, SH 1,
Otho Butler
1993, see Commission Item 15, SH 97,
Leon Bench
1993, see House Bill 1476, US 412,
Scenic U.S. Highway 412
1993, see Commission Item 121 (c),
Scenic U.S. Highway 412
1993, see Senate, S.C.R. 17, US 412,
Billy G. Young
1993, see Commission Item 121 (b),
US 412, **Billy G. Young**
1994, see Senate, S.C.R. 37, US 69,
Lawrence A. Edge
1994, see Commission Item 100 (a),
Lawrence A. Edge
1994, see House Bill, 2168, SH 101,
Sequoyah Memorial Highway
1994, see Commission Item 100 (b),
SH 101, **Sequoyah Memorial Highway**
1994, see Commission Item 172 (a),
SH 89, **Eldon B. Davis**
1994, see Commission Item 172 (b),
SH 89, **Taovayas Bridge**
1994, see House Bill 2399, Sec. 2,
I-40 Bus., **Roger Miller**
1994, see Commission Item 186 (a),
I-40 Bus., **Roger Miller**
1994, see House Bill 2399, Sec. 1,
SH 99, **Hugh Warren**
1994, see Commission Item 186 (b),
SH 99, **Hugh Warren**
1994, see Senate, S.C.R. 48, SH 97,
Marques Haynes
1994, see Commission Item 186 (c),
SH 97, **Marques Haynes**
1994, see House, H.C.R. 1118, US 75,
Orland Hammersly
1994, see Commission Item 186 (d),
US 75, **Orland Hammersly**
1994, see House, H.C.R. 1120, US 75,
Roy Linton
1994, see Commission Item 186 (e),
Roy Linton
1995, see Commission Item 72, SH 6,
Donald J. Hurt
1995, see Commission Item 183, SH 112,
B.L. Klutts
1995, see House, H.C.R. 1017, SH 131,
Marvin Newberry
1995, see Commission Item 97 (a),
SH 131, **Marvin Newberry**
1995, see House, H.C.R. 1018, SH 131,
George L. Shields
1995, see commission Item 97 (b),
SH 131, **George L. Shields**
1995, see House, H.C.R. 1038, SH 63,
Henry A. Foris
1995, see Commission Item 97 (c), SH 63,
Henry A. Foris
1995, see House Bill 1216, SH 20,
Carl Belew
1995, see Commission Item 97 (d), SH 20,
Carl Belew
1995, see House Bill 1613, Sec. 1, SH 101,
Thomas D. Peace
1995, see Commission Item 203 (a),
Thomas D. Peace
1995, see House Bill 1613, Sec. 2, US 62,
SH 19 & SH 82, **POW-MIA Highway**
1995, see Commission Item 203 (b), US 62,
SH 10 & SH 82, **POW-MIA Highway**
1995, see House, H.C.R. 1035, SH 152,
Scenic Route Western Oklahoma
1996, see House, H.C.R. 1093, SH 51
& SH 74, **Angie Debo**
1996, see Commission Item 139 (a), SH 51
& SH 74, **Angie Debo**
1996, see House, H.J.R. 1077, US 64,
Pawnee Bill
1996, see Commission Item 139 (b),
US 64, **Pawnee Bill**
1996, see House, H.C.R. 1099, SH 48,
Vernon Sweat

1996, see Commission Item 139 (c), SH 48, **Vernon Sweat**
1996, see House, H.C.R. 1100, SH 1, **Pete Gray**
1996, see Commission Item 139 (d), **Pete Gray**
1996, see Senate, S.C.R. 75, US 283, **Old Greer County Highway**
1996, see Commission Item 139 (e), US 283, **Old Greer County Highway**
1996, see Senate, S.J.R. 35, SH 74, **John N. ‘Happy’ Camp**
1996, see Commission Item 139 (f), SH 74, **John N. ‘Happy’ Camp**
1996, see Senate, S.C.R. 73, SH 3E, **Pierre F. Taron, Jr.**
1996, see Commission Item 139 (g), SH 3E, **Pierre F. Taron, Jr.**
1996, see Senate, S.J.R. 30, US 81, **Chisholm Trail**
1997, see Senate, S.J.R. 8, US 75, **Perryman Highway**
1997, see Senate, S.J.R. 8, US 75, **American Wars**
1997, see Senate, S.J.R. 8, US 75, **John L. Hillman**
1997, see House, H.C.R. 1045, US 60, **Ben Johnson**
1997, see Commission Item 146, US 60, **Ben Johnson**
1997, see House, H.C.R. 1008, SH 33, **Earl R. Gibble**
1998, see Senate, S.C.R. 39, SH 51, **Jack H. Choate**
1998, see Commission Item 74, SH 51, **Jack H. Choate**
1998, see House, H.C.R. 1064, I-35, **Shannon Miller**
1998, see Commission Item 74, I-35, **Shannon Miller**
1998, see House Bill 2259, SH 51, **42nd Infantry Division**
1998, see Commission Item 111 (b), SH 51, **42nd Infantry Division**
1998, see House, H.J.R. 1092, County Road, **Jakie Horn**
1998, see House, H.J.R. 1075, SH 47 & SH 47A, **Black Kettle**
1998, see Commission Item 111 (a), SH 47 & SH 47A, **Black Kettle**
1998, see House, H.C.R. 111, SH 1, **Harold L. Jennings**
1998, see Commission Item 131 (b), SH 1, **Harold L. Jennings**
1998, see Senate Bill 854, I-35, **World War I Veterans**
1998, see Commission Item 131 (a), **World War I Veterans**
1998, see Senate Bill 854, I-35, **World War II Veterans**
1998, see Commission Item 13 (a), I-35, **World War II Veterans**
1998, see Senate Bill 854, I-40, **Korean War Veterans**
1998, see Commission Item 131 (a), I-40, **Korean War Veterans**
1998, see Senate Bill 854, I-40, **Vietnam Veterans**
1998, see Commission Item 131 (a), I-40, **Vietnam Veterans**
1999, see Senate Bill 673, US 59, US 259 & US 271, **Mountain Gateway**
1999, see Commission Item 86 (b), US 59, US 259 & US 271, **Mountain Gateway**
1999, see Senate, S.J.R. 21, SH 51, **Dr. William R. Bright**
1999, see Commission Item 86 (c), SH 51, **Dr. William R. Bright**
1999, see House Bill 1455, SH 51, **Broken Arrow Expressway**
1999, see Commission Item 194 (a) Sec. 1, SH 51, **Broken Arrow Expressway**
1999, see House, H.C.R. 1056, NE 23rd St. In OKC, **Dr. A. L. Dowell**
1999, see Commission Item 104 (b), NE 23rd St. in OKC, **Dr. A. L. Dowell**
1999, see Senate Bill 203, SH 44, **Victor Wickersham**

1999, see Commission Item 86 (a), SH 44,
Victor Wickersham
1999, see House Bill 1455, SH 51,
42nd Infantry Division
1999, see Commission Item 104 (a) Sec. 2,
SH 51, **42nd Infantry Division**
2000, see Senate Bill 1106, SH 18,
Marjorie and Maria Tallchief
2000, see Commission Item 97 (f), SH 44,
Marjorie and Maria Tallchief
2000, see Senate Bill 1106, SH 18.
Senator Frank Mahan
2000, see Commission Item 97 (f), SH 18,
Senator Frank Mahan
2000, see House Bill 2714, SH 107,
Clara Luper Corridor
2000, see Commission Item 97 (a), SH 107,
Clara Luper Corridor
2000, see House Bill 2195, SH 82,
Cliff Bogle
2000, see Commission Item 97 (e), SH 82,
Cliff Bogle
2000, see House Bill 2446, SH 127,
Sam Fields
2000, see Commission Item 97 (d), SH 127,
Sam Fields
2000, see House Bill 2717, I-40,
Sparland Rose
2000, see Commission Item 97 (b), I-40,
Sparland Rose
2000, see House, H.C.R. 1098, US 281,
Tom Manar
2000, see Commission Item 97 (c), US 281,
Tom Manar
2001, see House, H.C.R 1036, Jct. SH 77
& I-35, **Cleo Bradshaw**
2001, see Commission Item 97 (a), Jct. SH
77 & I-35, **Cleo Bradshaw**
2001, see House, H.C.R. 1007, US 169,
Pearl Harbor Expressway
2001, see Commission Item 112 (b),
US 169, **Pearl Harbor Expressway**
2001, see House, H.C.R. 1039, SH 131,
John C. Farley
2001, see Commission Item 112 (a), SH 131,
John C. Farley
2001, see Senate Bill 459, SH 9,
J. M. Bailey
2001, see Commission Item 92 (b), SH 9,
J. M. Bailey
2001, see . Senate Bill 459, US 59,
Sailboat Bridge
2001, see Commission Item 97 (c), US 59,
Sailboat Bridge

28"



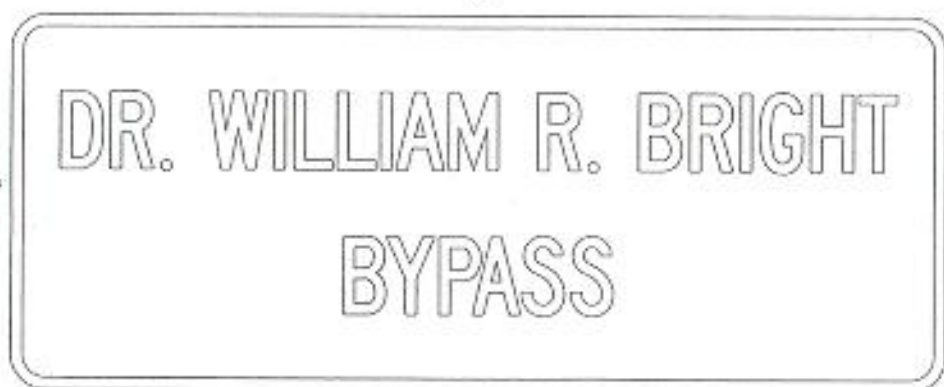
72"

24"



60"

24"



STANDARD MEMORIAL SIGNING
GREEN BACKGROUND WITH WHITE LETTERING
1985 TO PRESENT

COMANCHE COUNTY



THE QUANAH PARKER
TRAILWAY

BETWEEN LAWTON AND ALTUS
ON US 62

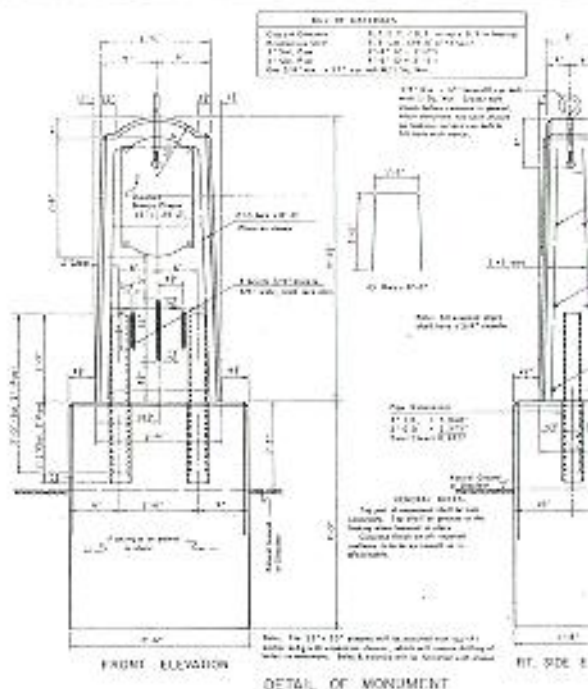
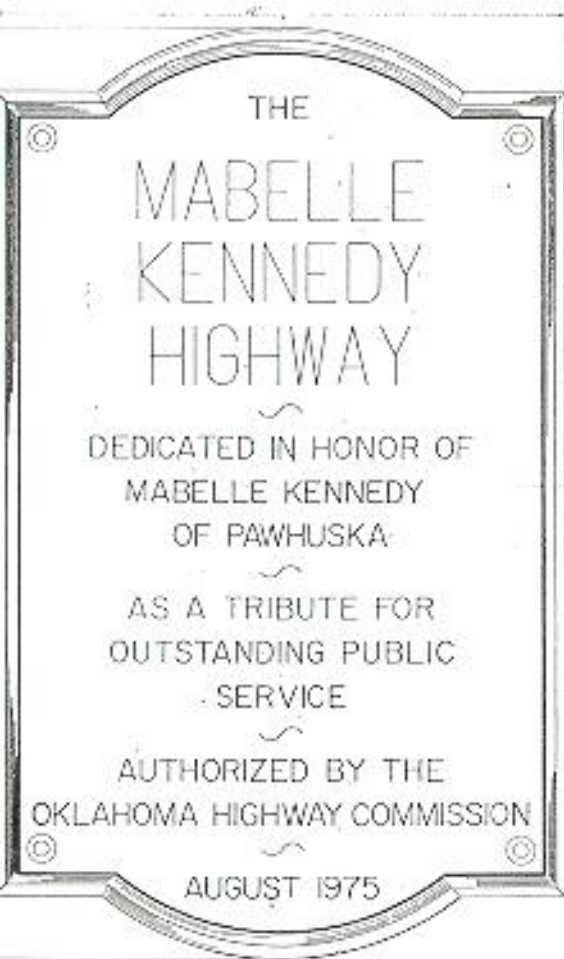
COMANCHE COUNTY



THE QUANAH PARKER
TRAILWAY

BETWEEN LAWTON AND ALTUS
ON US 62

THE MABELLE KENNEDY HIGHWAY



SPECIFICATIONS FOR BRONZE PLAQUE

These specifications are intended to be used in conjunction with the following:

1. Plans for the design of the plaque and monument, including the design of the plaque and monument, and the design of the base.
2. The design of the plaque and monument, including the design of the plaque and monument, and the design of the base.
3. The design of the plaque and monument, including the design of the plaque and monument, and the design of the base.
4. The design of the plaque and monument, including the design of the plaque and monument, and the design of the base.
5. The design of the plaque and monument, including the design of the plaque and monument, and the design of the base.
6. The design of the plaque and monument, including the design of the plaque and monument, and the design of the base.

BRONZE PLAQUE AND
MONUMENT
FOR
MABELLE KENNEDY
HIGHWAY
OKLAHOMA CITY LIMITS TO ARK.

BRONZE PLAQUE AND MONUMENT ERECTED AT MEMORIAL SITES 1940's - 1985

ROGERS COUNTY

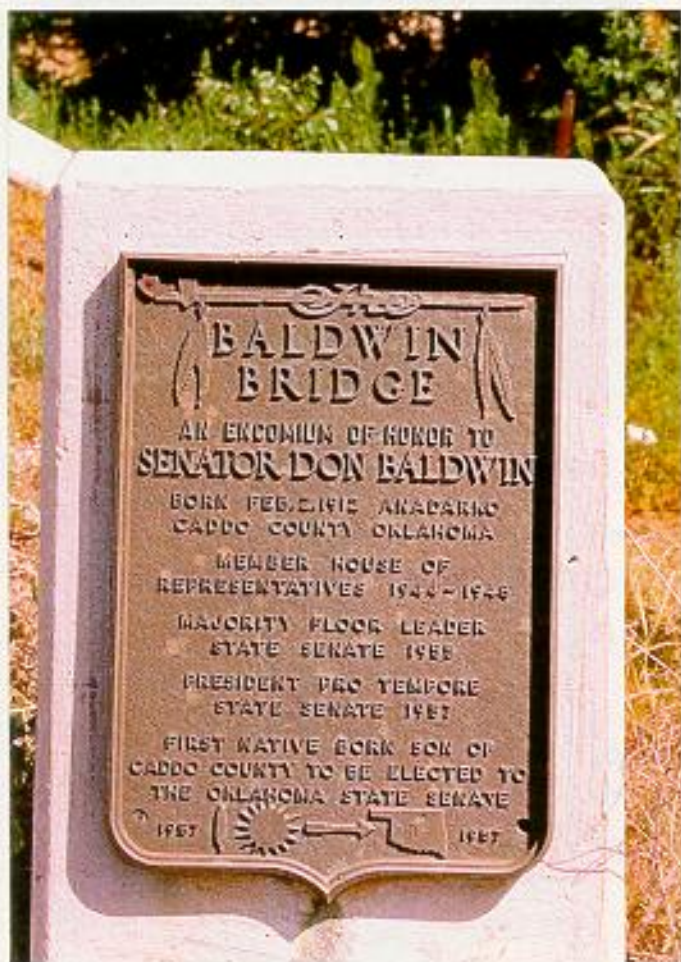


ADMIRAL JOE "JOCKO" CLARK TRAILWAY

BETWEEN BUSHYHEAD AND WHITE OAK
ON SH 66

Monument located at the junction of Sixth Street and Wanut in Chelsea

CADDO COUNTY



**SENATOR DON BALDWIN
BRIDGE**

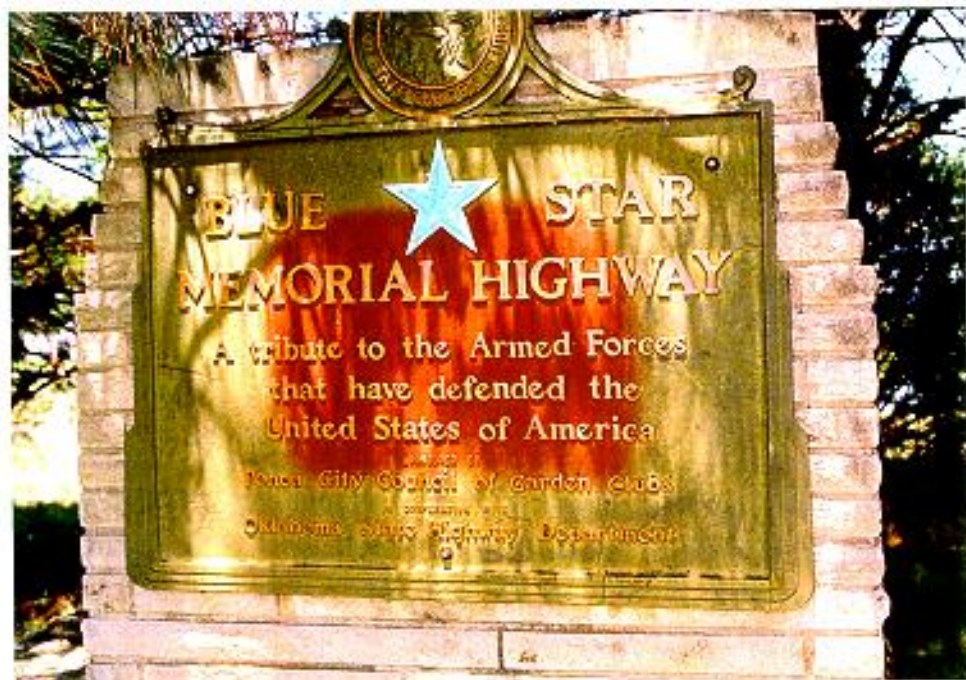
**DEER CREEK SOUTH OF HYDRO
ON SH 58**



BLUE STAR MEMORIAL HIGHWAY

US 77 ACROSS OKLAHOMA

Monument located at south edge of Ponca City
at junction US 60 and old US 177



Master Index

(Reference page numbers are in bold type)

- 42nd 'Rainbow' Infantry Division**, see
1963, 1998, 1999 (SH 51) ▲ **5**
- 45th Infantry Division**, see 1988, 1989,
1992 (SH 3) ▲ **12**
- 101 Ranch**, see 1990 (SH 156) ▲ **14**
- Abbott, Lonnie**, see 1988 (SH 99) ❖ **12**
- Albert, Carl**, see 1973 (SH 93) ❖ **6**
- Allen, James W.**, see 1984 (Old SH 18) ❖
10
- American Legion**, see 1959, 1960
(US 281) ▲ **3**
- American Wars**, see 1989, 1997
(US 75) ▲ **14**
- Bailey, J. M.**, see 2001 (SH 9) ▲ **22**
- Baldwin, Don**, see 1957 (SH 58) ❖ **3**
- Belew, Carl**, see 1995 (SH 20) ▲ **17**
- Bell, Hop**, see 1967 (SH 58) ❖ **5**
- Bench, Leon**, see 1993 (SH 97) ▲ **15**
- Bigheart, James**, see 1989 (SH 11) ❖ **14**
- Bixby Spartan Pass**, see 1989 (US 64) ❖
13
- Black Kettle**, see 1998 (SH 47 & 47A) ▲
19
- Blue Star**, see 1951 (US 77) ▲ **1**
- Bogle, Cliff**, see 2000 (SH 82) ▲ **21**
- Boecher, Roy C.**, see 1962 (US 81) ❖ **4**
- Boone, Nathan**, see 1955 (SH 80) ▲ **2**
- Bradshaw, Mark 'Buzz'**, see 1979
(US 283) ❖ **8**
- Bridal, Velvie**, see 1957 (SH 74) ❖ **3**
- Bright, William R.**, see 1999 (SH 51) ▲
20
- Broken Arrow Expressway**, see 1999
(SH 51) ▲ **21**
- Butler, Otho, Capt.** see 1993 (SH 1) ▲ **15**
- Camp, John N. 'Happy'**, see 1996
(US 283) ▲ **18**
- Carlile, Paul**, see 1977 (SH 10) ▲ **8**
- Carrier, Floyd E.**, see 1987 (US 60) ❖ **12**
- Carson, Kit**, see 1953 (US 64) ▲ **1**
- Centennial Expwy**, see 1988 (I-235) ▲ **12**
- Chisholm Trail**, see 1996 (US 81) ▲ **19**
- Choate, Jack H.**, see 1998 (SH 51) ▲ **19**
- Choska Bottom**, see 1978 (SH 104) ❖ **8**
- Chouteau, Jean Pierre**, see 1947 (US 69)
▲, 1963 (SH 20) ❖, 1971 (US 69) ▲
1, 4, 6
- Cimarron Highway**, see 1987 (US 412) ▲
12
- Clark, Joe 'Jocko'**, see 1984 (SH 66) ▲
10
- Cook, Jim**, see 1963 (SH 2) ▲ **4**
- Cooper, Gordon**, see 1963 (US 270) ▲ **4**
- Coo-Wee-Scoo-Wee**, see 1967 (SH 88) ▲
5
- Coppock, Stanley**, see 1958 (SH 8) ❖ **3**
- Cox, Julius W.**, see 1956 (US 60) ❖ **2**
- Dahl, John**, see 1985 (SH 99) ▲ **11**
- Davis, Eldon B.**, see 1994 (SH 89) ▲ **16**
- Dean, Robert C., Dr.**, see 1990, 1992
(US 69) ❖ **14**
- Debo, Angie**, see 1996 (SH 51 & SH 74) ▲
18
- Diel, Marion**, see 1985 (SH 33) ❖ **11**
- Dowell, A. L., Dr.** see 1999 (NE 23rd St.
OKC) ❖ **21**
- Edge, Lawrence A.**, see 1994 (US 69) ❖
16
- Farley, John C.**, see 2001 (SH 131) ❖ **22**
- Ferrel, L. A.**, see 1956 (SH 51) ❖ **2**
- Fields, Sam**, see 2000 (SH 127) ▲ **21**
- Finch, Heber, Jr.**, see 1963 (SH 117) ▲ **4**
- Fine, Ray**, see 1976 (I-40) ❖, 1972
(US 64) ▲ **6, 8**
- Fodge, Frank M.**, see 1984 (US 70) ❖ **11**
- Foris, Henry A.**, see 1995 (SH 63) ❖ **17**
- Fort Cantonment**, see 1956 (SH 51) ❖ **2**
- Fox Drive**, see 1951 (US 81) ▲ **1**
- Garber, Martin**, see 1990 (US 81) ▲ **15**

- Garriott, Owen K., Dr.**, see 1975 (US 60, US 412) ▲ 6
- Gary, Emma**, see 1957 (US 183) ❖ 3
- Gary, Raymond**, see 1956 (US 281) ❖, 1957 (I-35) ▲, 1958 (I-40 Bus.) ▲ 2, 3
- Gibble, Earl R.**, see 1997 (SH 33) ▲ 19
- Glenn, Frank**, see 1984 (Ash Creek Rd) ▲ 11
- Gragg, C. Hubert**, see 1966 (US 77) ❖ 5
- Grantham, Roy**, see 1985 (Lake Access Road) ▲ 11
- Gray, Pete**, see 1996 (SH 1) ❖ 18
- Greathouse, Cecil B. 'Bud'**, see 1984 (SH 3 Bypass) ▲ 10
- Greer County Highway**, see 1996 (US 283) ▲ 18
- Gungoll, James H.**, see 1980 (US 81) ❖ 9
- Hammersly, Orland**, see 1994 (US 75) ❖ 17
- Haney, Enoch Kelly**, see 1988 (SH 99) ❖ 12
- Haskins, Ben**, see 1979 (SH 93) ▲ 9
- Haynes, Marques**, see 1994 (SH 97) ▲ 16
- Herring, Jack**, see 1984 (US 75) ❖ 11
- Hillman, John L.**, see 1997 (US 75) ▲ 19
- Historic Route 66**, see 1989 (US 66) ▲ 14
- Holmes, Dan P.**, see 1975 (SH 33) ❖ 1984 (US 412 & SH 33) ▲ 6, 10
- Honey Creek Pass**, see 1984 (I-35) ▲ 10
- Horn, Jakie**, see 1998 (County Road) ❖ 19
- Hurt, Donald J., Sgt.**, see 1995 (SH 66) ❖ 17
- Illinois River Scenic Drive**, see 1989 (SH 10) ▲ 13
- Indians, Taovayas Tribe**, see 1994 (SH 89) ❖ 16
- Jennings, Harold L.**, see 1998 (SH 1) ❖ 20
- Johnson, Ben**, see 1997 (US 60) ▲ 19
- Johnson, Joe A.**, see 1988 (US 59) ❖ 13
- Johnson, Lyndon Baines**, see 1974 (SH 69A) ▲ 6
- Johnston, Henry S.**, see 1965 (US 77) ▲ 5
- Jumper, Virgil**, see 1970 (US 70 Bypass) ▲ 6
- Kamas, Louis M.** see 1980 (SH 50) ❖ 9
- Kennedy, Mabelle**, see 1975 (US 60) ▲ 6
- Kerr, Robert S.**, see 1955 (SH 51) ❖, 1963 (SH 1) ▲ 2, 5
- Right, H. Tom, Jr.**, see 1956 (SH 66) ❖ 2
- King, Martin Luther Jr.**, see 1984 (I-244) ▲, 1990 (I-44) ▲ 10, 15
- King William J.**, see 1985 (US 60) ❖ 11
- Kirk, Lee**, see 1976 (US 177) ❖ 8
- Klutts, B. L.**, see 1988, 1995 (SH 12) ▲ 13
- Korean War Veterans**, see 1998 (I-40) ▲ 20
- Langley, W. H. 'Bill', Sr.**, see 1989 (SH 100) ▲ 13
- Lake Hefner Parkway**, see 1992 (SH 74) ▲ 15
- Lakeshore Parkway**, see 1989 (US 69) ▲ 13
- Linton, John O.**, see 1992 (SH 31) ❖ 15
- Linton, Roy**, see 1994 (US 75) ❖ 17
- Luper, Clara**, see 2000 (SH 107) ▲ 21
- Lynch, Frank**, see 1980 (Old SH 77H) ❖ 9
- McCall, Samuel**, see 1990 (I-35) ❖ 14
- McColgin, S. S.**, see 1963 (SH 47) ▲ 4
- McCullough, D. I.**, see 1961 (US 259) ❖ 4
- McDonald, Ed**, see 1963 (US 59) ❖ 5
- McLeroy, James**, see 1990, 1992 (US 69) ❖ 14
- McSpadden, Clem**, see 1985 (SH 66) ▲ 11
- Mahan, Frank**, see 2000 (SH 18) ▲ 21
- Manar, Tom**, see 2000 (US 281) ❖ 21
- Marland, E. W.**, see 1988 (US 60) ▲ 12
- Memminger, C.B.**, see 1970 (SH 3) ❖ 6
- Military Units**, see 1998 (SH 51) ▲, 1992 (SH 3) ▲ 5, 12
- Miller, Roger**, see 1994, (I-40 Bus.) ▲ 16

- Miller, Shannon**, see 1998 (I-35) ▲ 19
- Miskelly, John, Jr.**, see 1992, 1993 (US 62) ▲ 15
- Moad, Jody S.**, see 1963 (SH 47) ▲ 4
- Mountain Gateway**, see 1999 (US 59, US 259, US 271) ▲ 20
- Murphy, Robert M.**, see 1977 (SH 33) ❖ 8
- Murphy, Wyche B.**, see 1969 (SH 51) ❖ 6
- Murray, Johnston**, see 1953 (SH 34) ❖ 1
- Nance, James C.**, see 1967 (US 77) ❖ 5
- Nash, William R.**, see 1983 (S. 71st St. in Tulsa) ❖ 10
- Newberry, Marvin**, see 1995 (SH 131) ❖ 17
- Nichols, Allen G.**, see 1968 (SH 1) ❖ 6
- Nigh, George**, see 1986 (US 69) ▲ 12
- Northwest Passage**, see 1981 (SH 3) ▲ 9
- Old Fort Cantonment Crossing**, see 1956 (SH 51) ❖ 2
- Old Greer County Highway**, see 1996 (US 283) ▲ 18
- Packsaddle Bridge**, see 1979 (US 283) ❖ 8
- Parker, Bertha**, see 1981 (US 62) ▲ 9
- Parker, Quanah**, see 1992 (US 62) ▲ 15
- Pawnee Bill**, see 1996 (US 64) ▲ 18
- Peace, Thomas D.**, see 1995 (SH 101) ▲ 17
- Pearl Harbor**, see 2001 (US 169) ▲ 22
- Perry, Bruce**, 1960 (SH 132) ❖ 3
- Perry, Flavel D.**, see 1980 (US 77) ▲ 9
- Perryman Highway**, see 1997 (US 75) ▲ 19
- Phillips, Frank**, see 1951 (Old US 60) ▲, 1987 (SH 123) ▲ 1, 12
- POW-MIA Highway**, see 1995 (US 62, SH 10 & SH 82) ▲ 17
- Pullen, Jake**, see 1985 (US 70) ▲ 11
- Rainbolt, Gene**, see 1975 (SH 3E) ❖ 6
- Richardson, J. A.**, see 1968 (SH 3E/SH 1) ▲ 6
- Rogers, Will**, see 1955 (I-44) ▲ 2
- Roosevelt, Franklin D.**, see 1948 (US 70) ❖ 6
- Rose, Sparland**, see 2000 (I-40) ❖ 21
- Route 66**, see 1986 (SH 66) ▲, 1989 (Old US 66 & SH 66) ▲ 12, 14
- Sailboat Bridge**, 2001 (US 59) ❖ 22
- Sandlin, Hugh M.**, see 1975 (SH 48) ❖ 8
- Santa Fe Trail**, see 1961 (US 56) ▲ 4
- Scenic SH 77S**, see 1951, 1952, 1964, 1974 (SH 77S) ▲ 1
- Scenic U.S. Highway 412**, see 1993 (US 412 & Cherokee Turnpike) ▲ 15
- Scenic Illinois River Drive**, see 1989 (SH 10) ▲ 13
- Scenic Route of Western Oklahoma**, see 1995 (SH 152) ▲ 18
- Scenic Talimena Drive**, see 1968 (SH 1) ▲ 6
- Schnoebelin, Omer**, see 1970 (SH 50) ❖ 6
- Selman, J. O.**, 1965 (SH 34) ❖ 5
- Seminole Nation**, 1979 (SH 56) ▲ 9
- Sequoyah**, see 1994 (SH 101) ▲ 16
- Sewell, Oscar**, 1954 (SH 18) ▲ 2
- Shibley Highway**, see 1958 (SH 16) ▲ 3
- Shields, George L.**, see 1995 (SH 131) ❖ 17
- Smith, J. O. 'Cotton'**, see 1988, 1990 (SH 56) ❖ 13
- Steed, Tom.**, see 1983 (I-40) ▲ 10
- Stoldt, C.A. 'Bud'**, see 1957 (SH11/US 77) ❖ 3
- Sweat, Vernon**, see 1996 (SH 48) ❖ 18
- Talimena Scenic Drive**, see 1968 (SH 1) ▲ 6
- Tallchief, Marjorie & Maria**, See 2000 (SH 18) ▲ 21
- Taovayas Bridge**, see 1994 (SH 89) ❖ 16
- Taron, Pierre F., Jr.**, see 1996 (SH 3E) ❖ 18
- Thompson, Mick**, see 1988 (US 59) ▲ 13
- Thorpe, Jim**, see 1975 (SH 51) ▲ 8

Tinker, Clarence L., see 1989 (SH 20) ▲
14

Tittle, Louis M., see 1956 (SH 30) ❖,
 1957 (SH 6) ❖ **2, 3**

Trails, see 1961 (US 56) ▲, 1996
 (US81) ▲ **4, 19**

Trailway(s), see 1984 (SH 66) ▲,
 1992 (US 62) ▲ **10, 15**

Traw, Tom, see 1985 (SH 9A) ❖ **11**

Turner, Roy, see 1955 (I-44) ▲ **2**

Turnpikes, see 1955 (I-44), 1993 (US 412)
2, 15

Veterans, see 1951 (US 77) ▲, 1959
 (US 281) ▲, 1989 (SH 99) ▲, 1989
 (SH 20) ▲, 1992 (SH 31) ❖, 1993 (SH 1)
 ❖, 1994 (US 69) ❖, 1994 (US 75) ❖,
 1995 (SH 131) ❖, 1995 (SH 66) ❖, 1997
 (US 75) ▲, 1998 (I-35) & (I-40) ▲
1, 3, 12, 14, 15, 17, 19, 20,

Veterans Memorial Highway, see 1989,
 1990 (SH 99) ▲ **14**

Vietnam Veterans, see 1998 (I-40) ▲ **20**

Walker Oliver C., see 1983 (SH 270) ❖
10

Warren, Hugh, see 1994 (SH 99) ▲ **16**

Whelan, Dwight F., see 1972 (US 77) ▲
6

White, Homer X., see 1952 (I-44) ❖ **1**

Wickersham, Victor C., see 1988, 1999
 (SH 44) ❖ **13**

Williams, Cowboy Pink, see 1961
 (SH 22) ❖ **4**

Williamson, Allen, see 1974 (SH 108) ❖ **7**

Wilson, John Quimby, see 1977
 (SH 99) ❖ **8**

World War I Veterans, see 1998 (I-35) ▲
20

World War II Veterans, see 1998
 (I-35) ▲ **20**

Young, Billy G., see 1993 (US 412) ❖ **16**

▲ Denotes memorial highway or other
 special named road
 ❖ Denotes memorial bridge