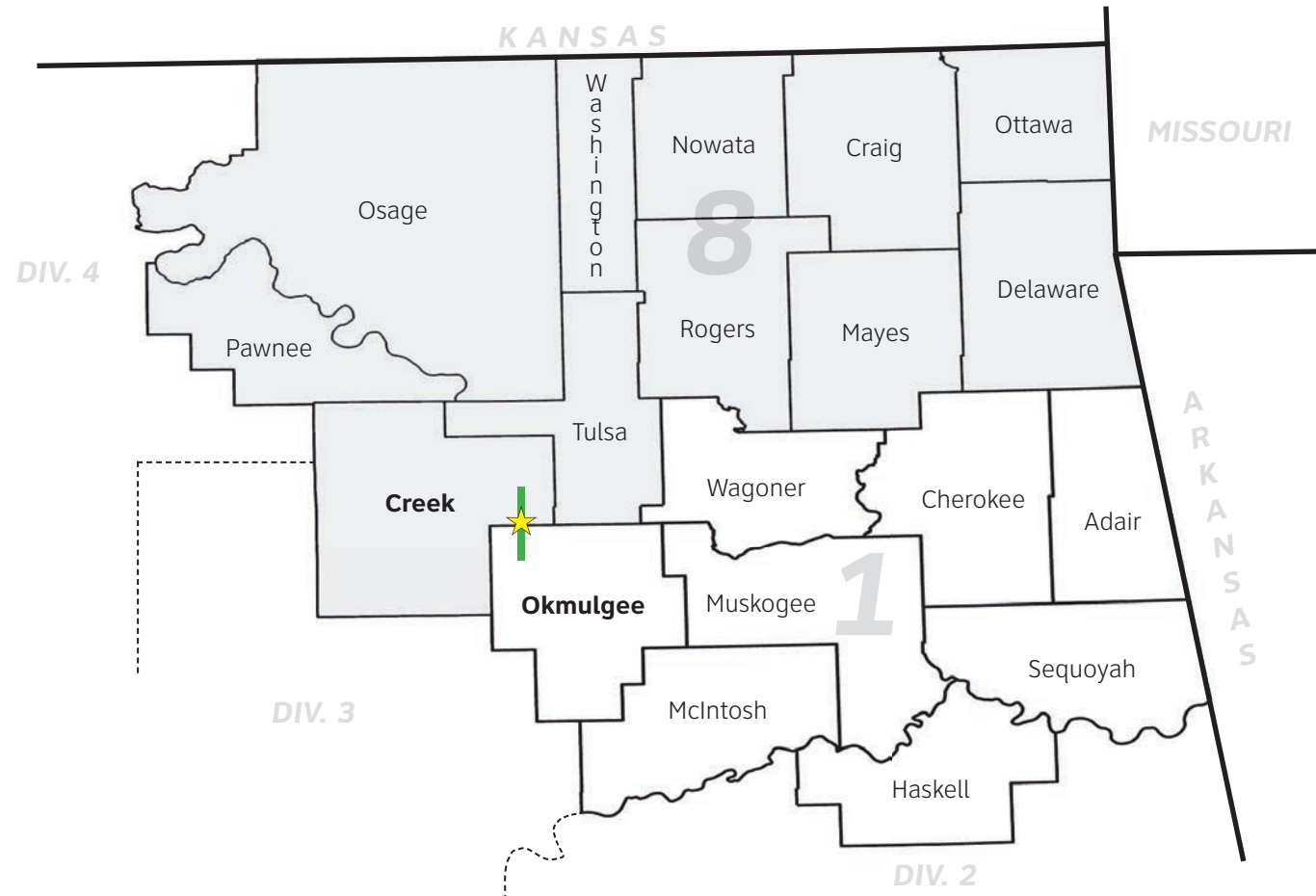


DIVISION 1 INFORMATION		DIVISION 8 INFORMATION	
•Division Engineer:	<i>Darren Saliba</i>	•Division Engineer:	<i>Randle White</i>
•Total Road Miles:	1,109.33	•Total Road Miles:	1,664.63
•Total Interstate Miles:	97.27	•Total Interstate Miles:	39.56
•Total Bridges:	706	•Total Bridges:	1,117
•Counties Serviced:	8	•Counties Serviced:	11



Visit us on your mobile device! Use the QR barcode to the left with your barcode reader of choice to visit [ODOT.org](http://ODOT.org) on the go.

### QUESTIONS? COMMENTS?

If you have any questions or comments about the Oklahoma Department of Transportation's proposed projects, please visit [www.odot.org/meetings/other.php](http://www.odot.org/meetings/other.php) to fill out an official comment form, or send an e-mail to [m-coordinator@odot.org](mailto:m-coordinator@odot.org) for any questions you have.

OKLAHOMA DEPARTMENT OF TRANSPORTATION

Public Outreach Program, Program Coordination Branch, 200 N.E. 21st St. Rm 3A7, Oklahoma City, OK 73105

**THE OKLAHOMA DEPARTMENT OF TRANSPORTATION**

# US-75A OPEN HOUSE

**Mounds High School Cafeteria  
1601 Russell Avenue  
Mounds, OK 74047**

**May 15<sup>th</sup>, 2014  
6:00pm**

**Welcome to The Oklahoma Department of Transportation (ODOT) Open House for US-75A in Creek & Okmulgee Counties, OK**

## PROJECT No. 24369(04): US-75a from 0.6 miles North of SH-16, North for 7.5 miles.

### PROJECT INFORMATION

- Estimated Project Cost: **\$15.9 Million**
- Projected Const. Start: **2016**
- Project to be constructed under traffic (no road closure)
- Current Est. ADT\*: *1,800 Vehicles a day*
- Future Est. ADT\*: *2,500 Vehicles a day*

### EXISTING CONDITIONS

- Narrow 2-Lane roadway - 22"
- No Shoulders for safety
- Poor sight distance

### PROPOSED IMPROVEMENTS

- Improvements to roadway geometry to improve sight distance
- Improvements built on an offset to the East.
- Replace bridge within project
- 40' Clear Roadway
- 2 - 12' Driving Lanes
- 2 - 8' Paved Shoulders

## PROJECT No. 27075(04): US-75a Bridge over SL&SF RailRoad, 1.9 miles north of Okmulgee County Line.

### PROJECT INFORMATION

- Estimated Project Cost: **\$5.2 Million**
- Projected Const. Start: **2016**
- Project to be constructed under traffic (no road closure)
- Current Est. ADT\*: *3,500 Vehicles a day*
- Future Est. ADT\*: *4,900 Vehicles a day*

### EXISTING CONDITIONS

- Narrow 2-Lane roadway - 22"
- No Shoulders for safety
- Poor sight distance
- Bridge is Fracture Critical
- Bridge is Structurally Deficient
- Bridge is Functionally Obsolete

### PROPOSED IMPROVEMENTS

- Improvements to roadway geometry for better sight distance
- Proposed to built on an offset to the West.
- Replace bridge within project
- 40' Clear Roadway
- 2 - 12' Driving Lanes
- 2 - 8' Paved Shoulders

## PROJECT No. 24425(04): US-75a from 0.34 miles North of the Okmulgee County Line, North for 4.83 miles.

### PROJECT INFORMATION

- Estimated Project Cost: **\$8.3 Million**
- Projected Right of way Start: **2019**
- Projected Const. Start: **2019**
- Project to be constructed under traffic (no road closure)

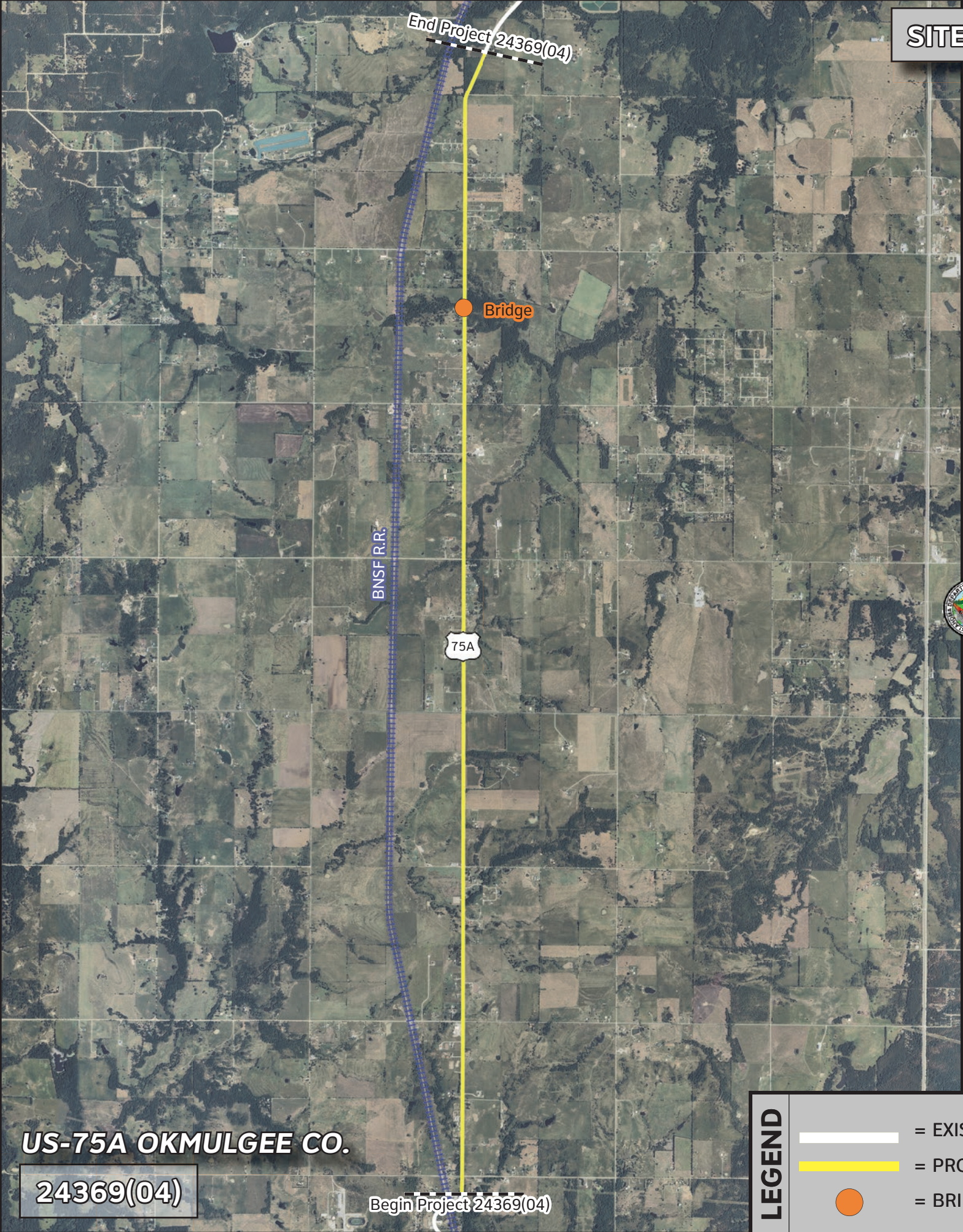
### EXISTING CONDITIONS

- Narrow 2-Lane roadway - 22"
- No Shoulders for safety
- Poor sight distance

### PROPOSED IMPROVEMENTS

- Improvements to roadway geometry to improve sight distance
- 40' Clear Roadway
- 2 - 12' Driving Lanes
- 2 - 8' Paved Shoulders

# SITE MAP






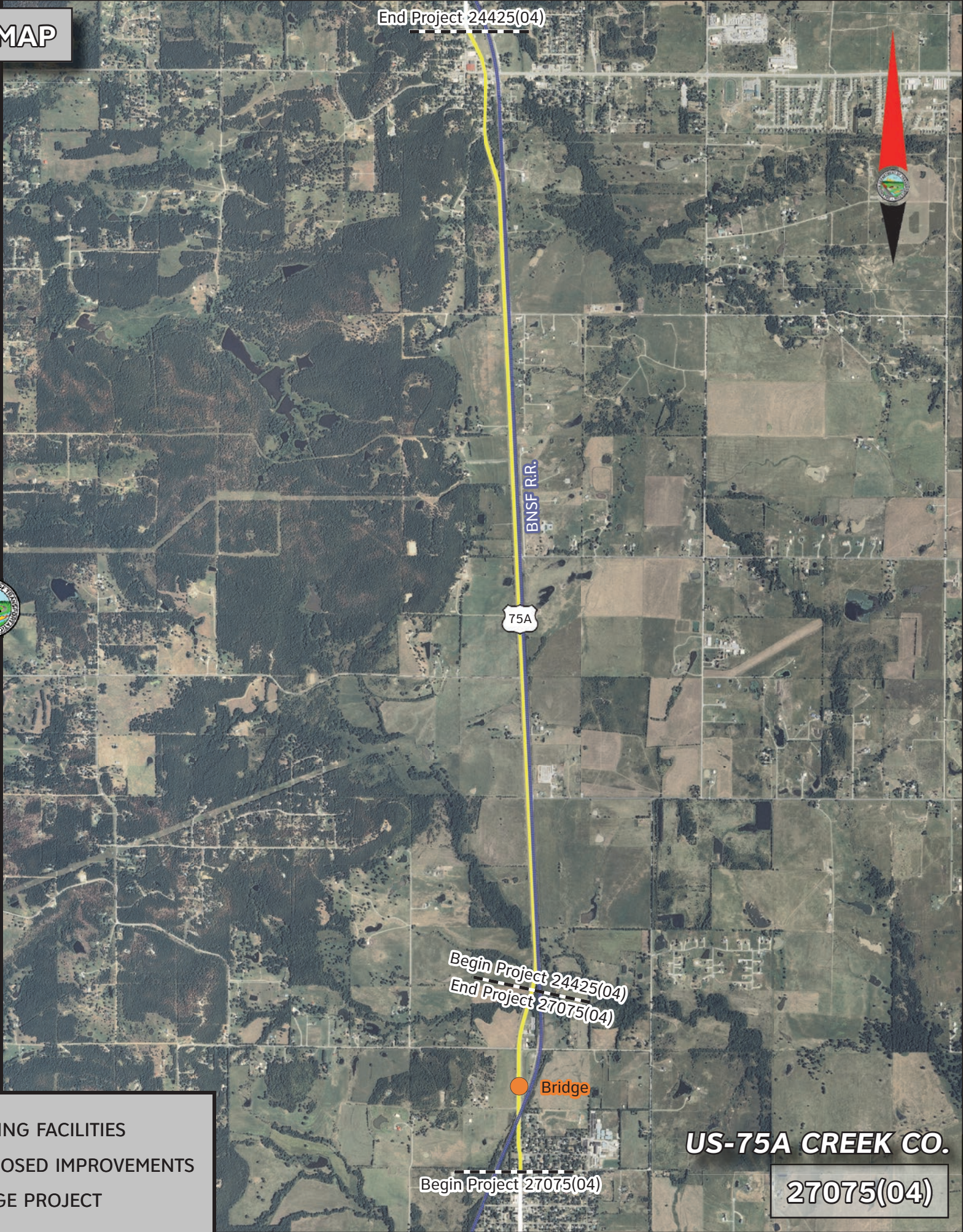
**US-75A OKMULGEE CO.**

**24369(04)**

Begin Project 24369(04)

## LEGEND

-  = EXISTING FACILITIES
-  = PROPOSED IMPROVEMENTS
-  = BRIDGE PROJECT



End Project 24425(04)

**US-75A CREEK CO.**

**27075(04)**

Begin Project 27075(04)

Begin Project 24425(04)  
End Project 27075(04)