











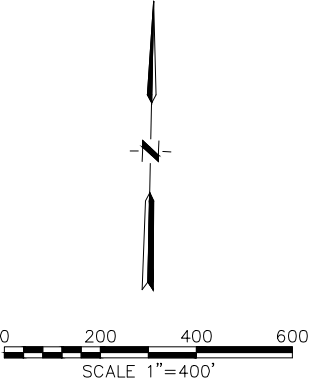
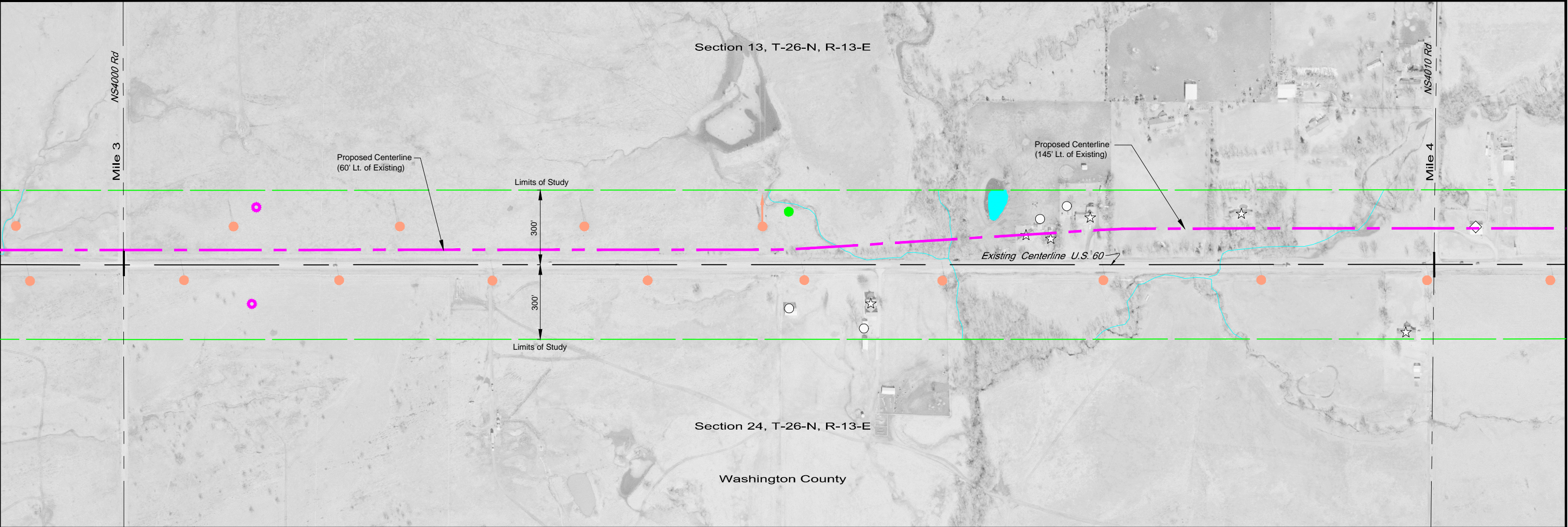


LEGEND

-  WATER FEATURE
-  FINAL CUT PIT IMPOUNDMENT
-  WETLAND
-  HAZARDOUS WASTE SITE
-  OIL SITE (ACTIVE)
-  OIL SITE (INACTIVE)
-  MAJOR UTILITY
-  RESIDENCE
-  BARN/SHED
-  SENSITIVE SITE
-  PARK
-  COMMERCIAL BUILDING

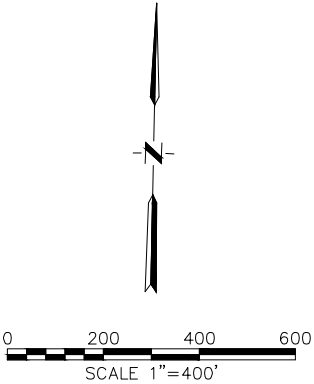


Survey	CKS	U.S. 60	WASHINGTON COUNTY
Drawn	CKD	NORTH MODIFIED PREFERRED ALTERNATE ENVIRONMENTAL CONSTRAINT MAP MILE 2.0 TO MILE 3.0	
Checked	CKE		
Approved			
Squad	C & K	JOB PIECE NO. EC882	SHEET NO. 1

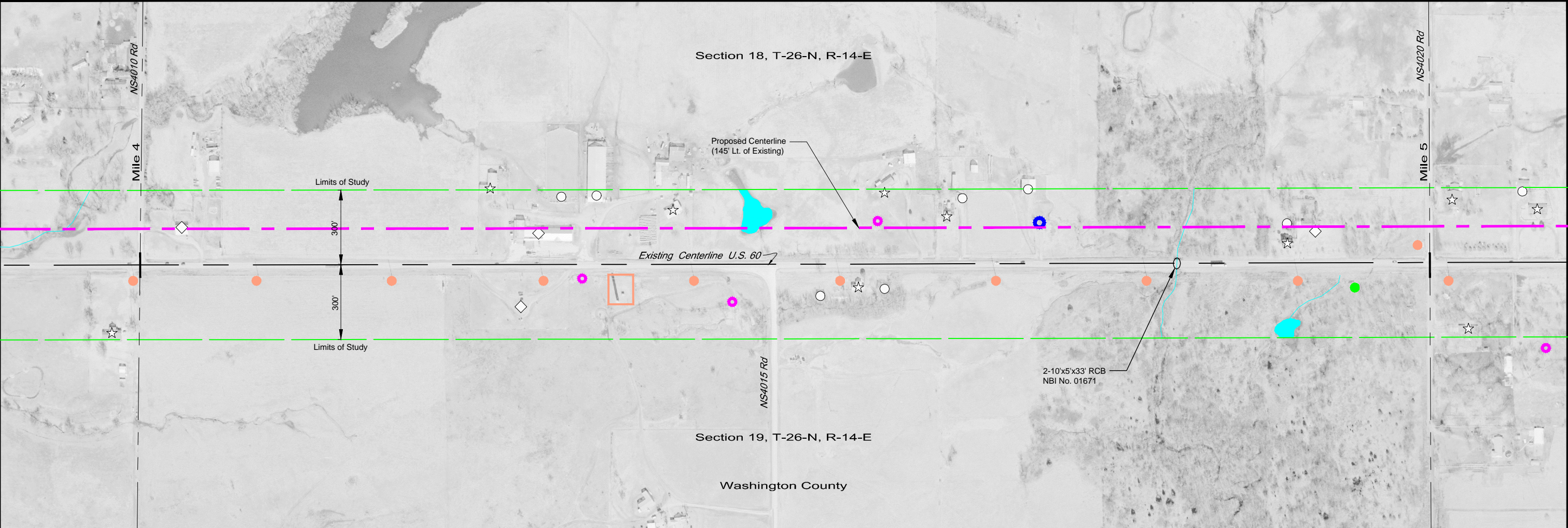


LEGEND

- WATER FEATURE
- FINAL CUT PIT IMPOUNDMENT
- WETLAND
- HAZARDOUS WASTE SITE
- OIL SITE (ACTIVE)
- OIL SITE (INACTIVE)
- MAJOR UTILITY
- RESIDENCE
- BARN/SHED
- SENSITIVE SITE
- PARK
- COMMERCIAL BUILDING

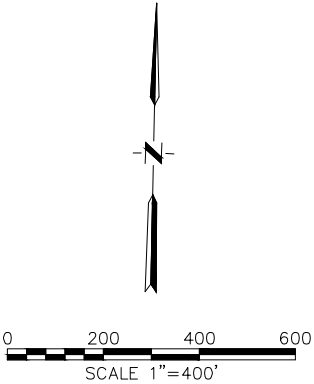


Survey	CKS	U.S. 60	WASHINGTON COUNTY
Drawn	CKD	NORTH MODIFIED PREFERRED ALTERNATE ENVIRONMENTAL CONSTRAINT MAP MILE 3.0 TO MILE 4.0	
Checked	CKE		
Approved			
Squad	C & K	JOB PIECE NO. EC882	SHEET NO. _2_

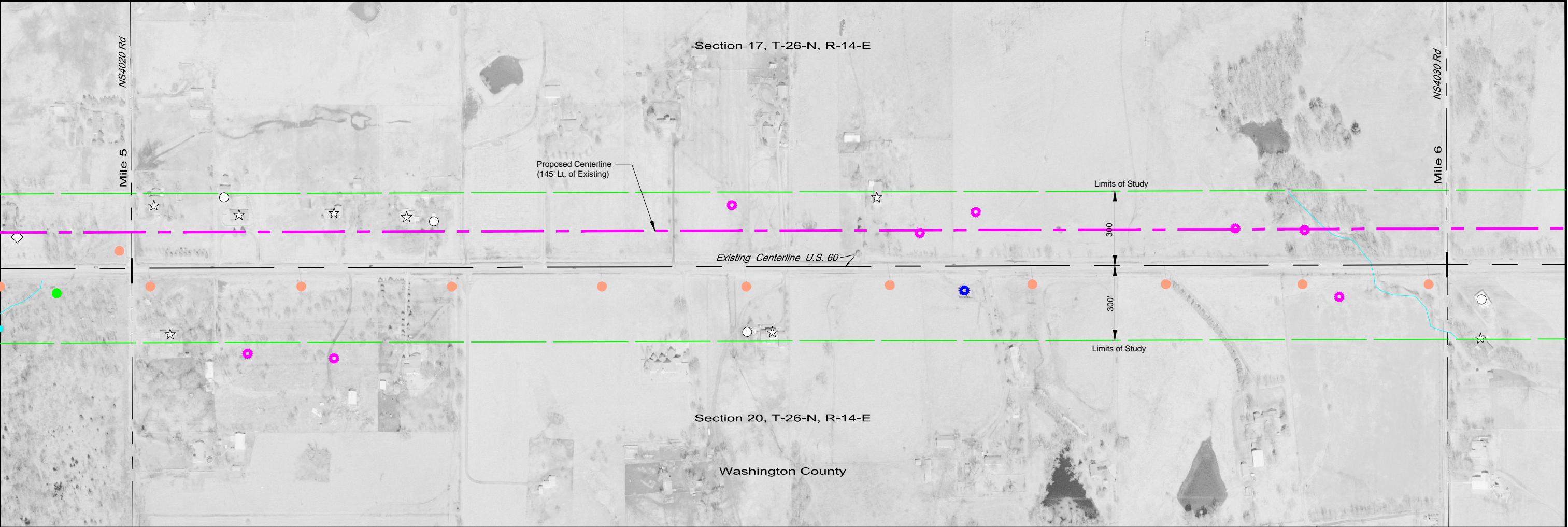


LEGEND













- WATER FEATURE
- FINAL CUT PIT IMPOUNDMENT
- WETLAND
- HAZARDOUS WASTE SITE
- OIL SITE (ACTIVE)
- OIL SITE (INACTIVE)
- MAJOR UTILITY
- RESIDENCE
- BARN/SHED
- SENSITIVE SITE
- PARK
- COMMERCIAL BUILDING

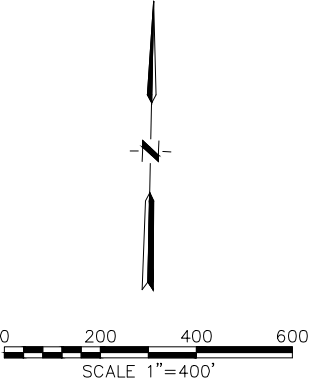


Survey	CKS	U.S. 60	WASHINGTON COUNTY
Drawn	CKD	NORTH MODIFIED PREFERRED ALTERNATE ENVIRONMENTAL CONSTRAINT MAP MILE 4.0 TO MILE 5.0	
Checked	CKE		
Approved			
Squad	C & K	JOB PIECE NO. EC882	SHEET NO. 3

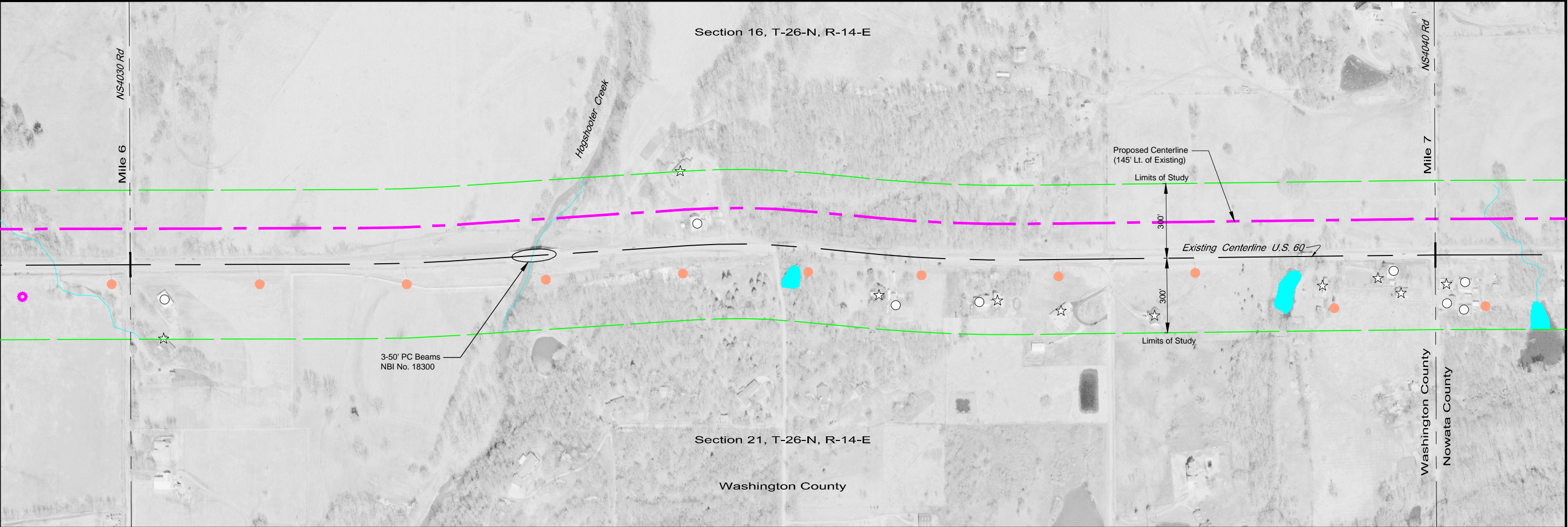


LEGEND

-  WATER FEATURE
-  FINAL CUT PIT IMPOUNDMENT
-  WETLAND
-  HAZARDOUS WASTE SITE
-  OIL SITE (ACTIVE)
-  OIL SITE (INACTIVE)
-  MAJOR UTILITY
-  RESIDENCE
-  BARN/SHED
-  SENSITIVE SITE
-  PARK
-  COMMERCIAL BUILDING

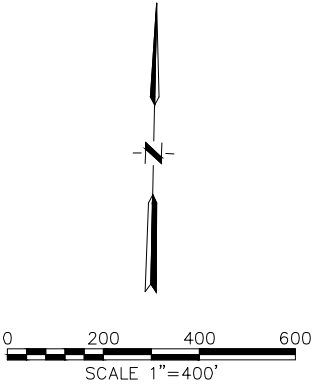


Survey	CKS	U.S. 60	WASHINGTON COUNTY
Drawn	CKD	NORTH MODIFIED PREFERRED ALTERNATE ENVIRONMENTAL CONSTRAINT MAP MILE 5.0 TO MILE 6.0	
Checked	CKE		
Approved			
Squad	C & K	JOB PIECE NO. EC882	SHEET NO. 4

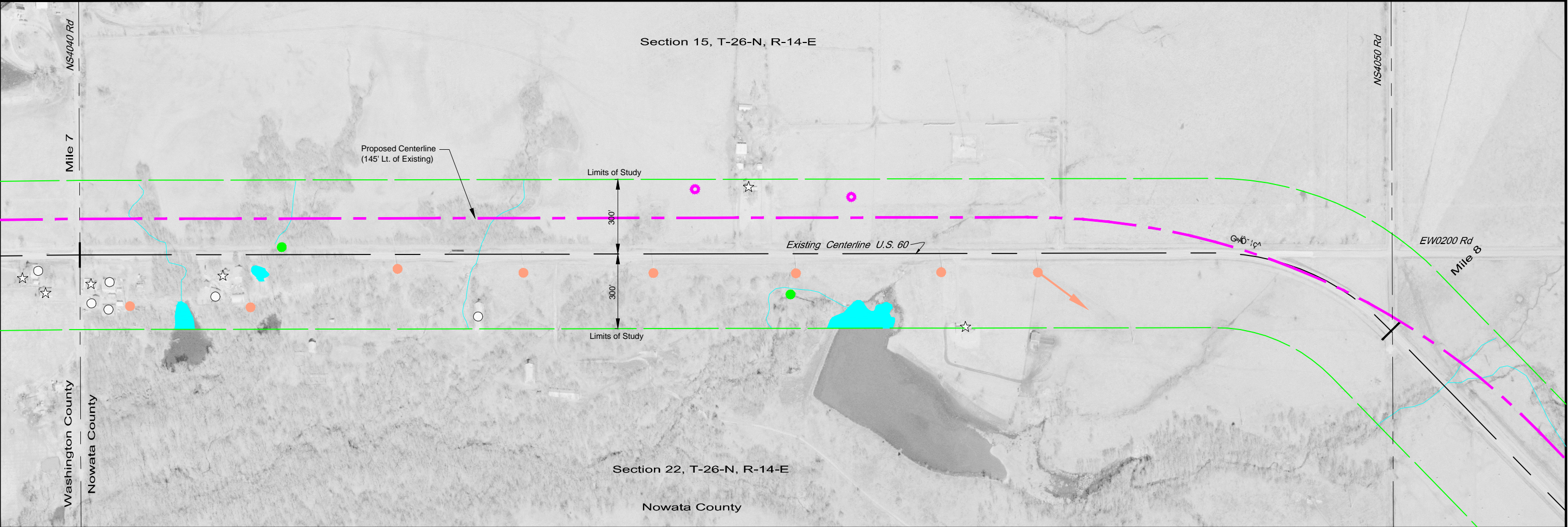


LEGEND













- WATER FEATURE
- FINAL CUT PIT IMPOUNDMENT
- WETLAND
- HAZARDOUS WASTE SITE
- OIL SITE (ACTIVE)
- OIL SITE (INACTIVE)
- MAJOR UTILITY
- RESIDENCE
- BARN/SHED
- SENSITIVE SITE
- PARK
- COMMERCIAL BUILDING

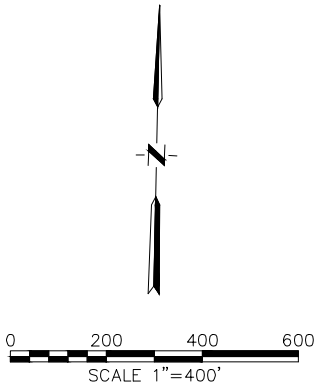


Survey	CKS	U.S. 60	WASHINGTON COUNTY
Drawn	CKD	NORTH MODIFIED PREFERRED ALTERNATE ENVIRONMENTAL CONSTRAINT MAP MILE 6.0 TO MILE 7.0	
Checked	CKE		
Approved			
Squad	C & K	JOB PIECE NO. EC882	SHEET NO. <u>5</u>

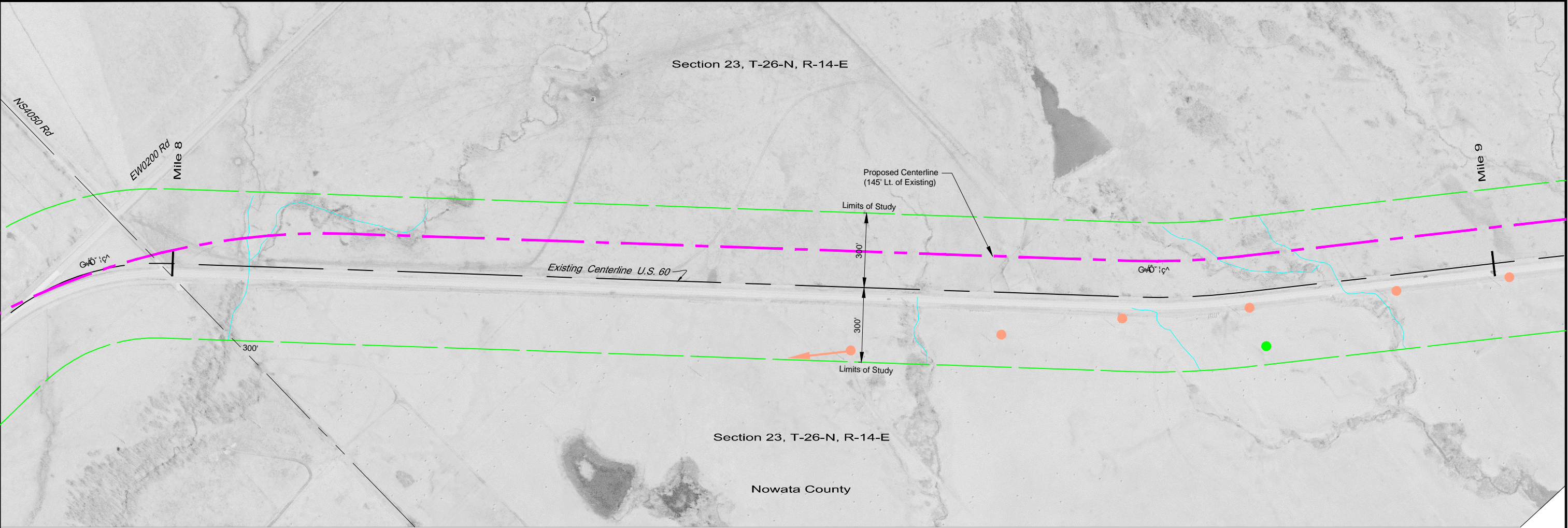


LEGEND

-  WATER FEATURE
-  FINAL CUT PIT IMPOUNDMENT
-  WETLAND
-  HAZARDOUS WASTE SITE
-  OIL SITE (ACTIVE)
-  OIL SITE (INACTIVE)
-  MAJOR UTILITY
-  RESIDENCE
-  BARN/SHED
-  SENSITIVE SITE
-  PARK
-  COMMERCIAL BUILDING

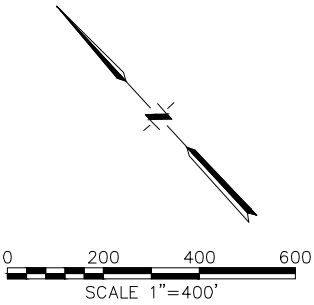


Survey	CKS	U.S. 60	NOWATA COUNTY
Drawn	CKD	NORTH MODIFIED PREFERRED ALTERNATE ENVIRONMENTAL CONSTRAINT MAP MILE 7.0 TO MILE 8.0	
Checked	CKE		
Approved			
Squad	C & K	JOB PIECE NO. EC882	SHEET NO. _6_

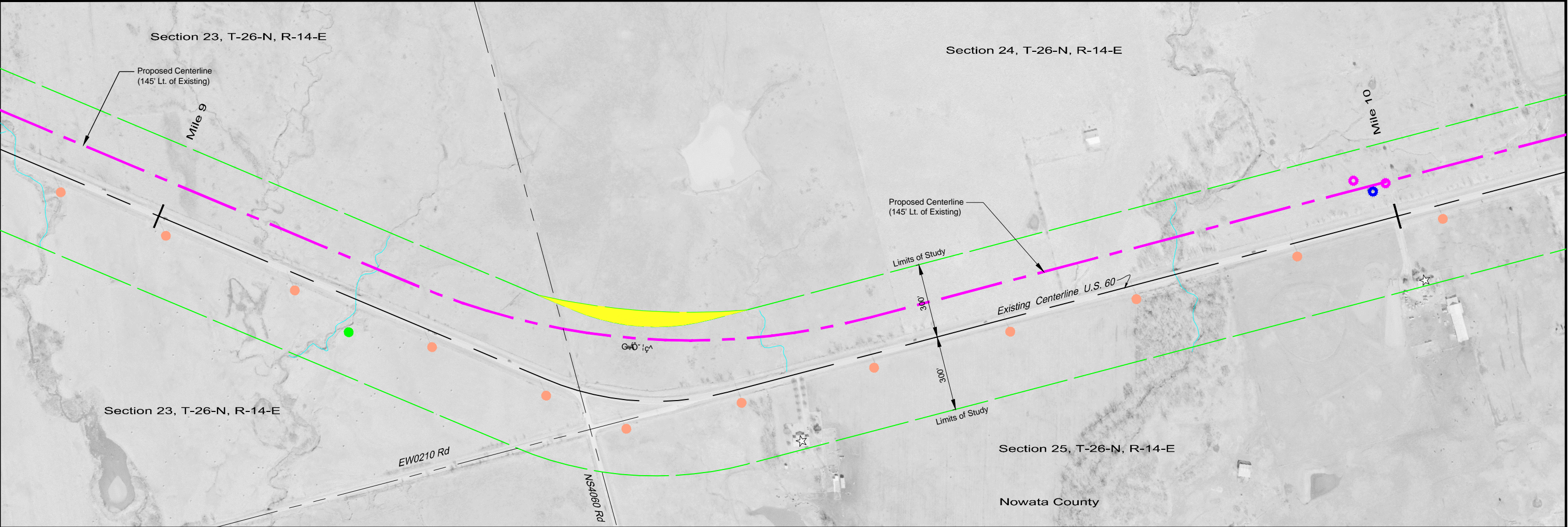


LEGEND

- WATER FEATURE
- FINAL CUT PIT IMPOUNDMENT
- WETLAND
- HAZARDOUS WASTE SITE
- OIL SITE (ACTIVE)
- OIL SITE (INACTIVE)
- MAJOR UTILITY
- RESIDENCE
- BARN/SHED
- SENSITIVE SITE
- PARK
- COMMERCIAL BUILDING

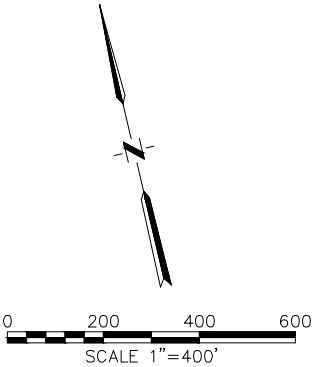


Survey	CKS	U.S. 60	NOWATA COUNTY
Drawn	CKD	NORTH MODIFIED PREFERRED ALTERNATE ENVIRONMENTAL CONSTRAINT MAP MILE 8.0 TO MILE 9.0	
Checked	CKE		
Approved			
Squad	C & K	JOB PIECE NO. EC882	SHEET NO. 7

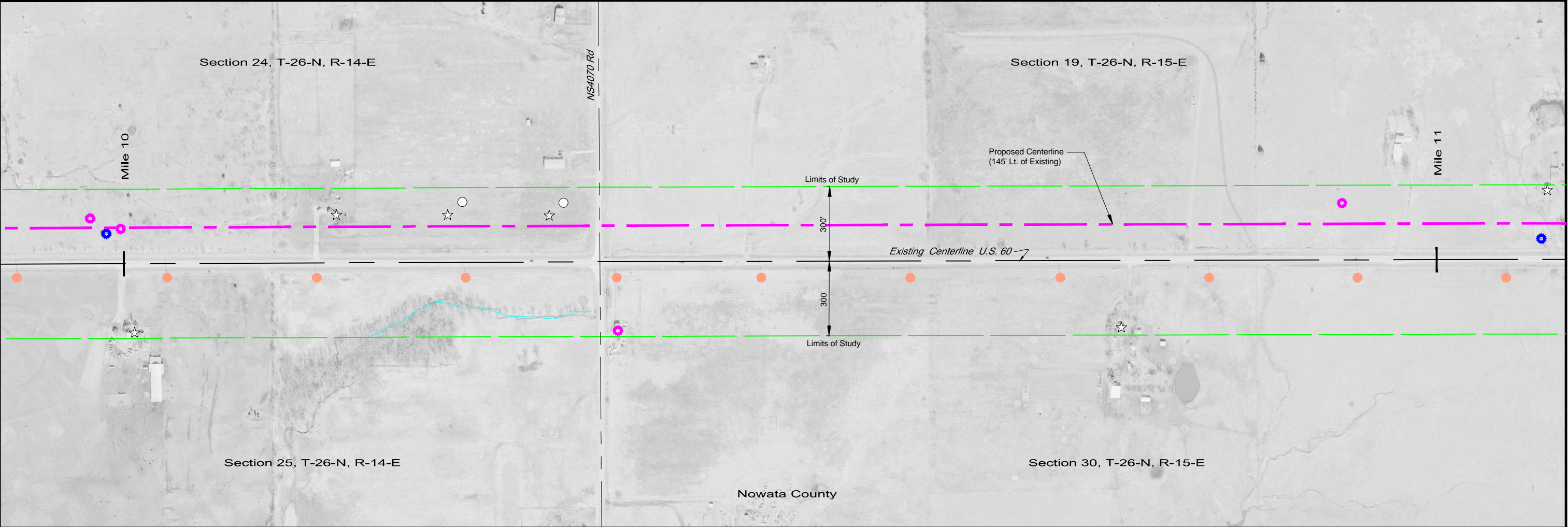


LEGEND














- WATER FEATURE
- FINAL CUT PIT IMPOUNDMENT
- WETLAND
- HAZARDOUS WASTE SITE
- OIL SITE (ACTIVE)
- OIL SITE (INACTIVE)
- MAJOR UTILITY
- RESIDENCE
- BARN/SHED
- SENSITIVE SITE
- PARK
- COMMERCIAL BUILDING
- EXPANDED STUDY AREA

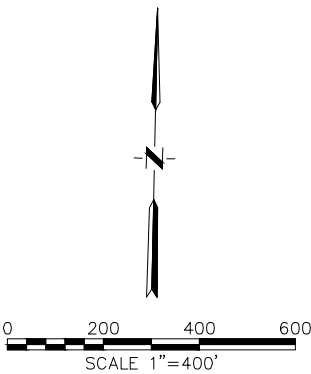


Survey	CKS	U.S. 60	NOWATA COUNTY
Drawn	CKD	NORTH MODIFIED PREFERRED ALTERNATE ENVIRONMENTAL CONSTRAINT MAP MILE 9.0 TO MILE 10.0	
Checked	CKE		
Approved			
Squad	C & K	JOB PIECE NO. EC882	SHEET NO. _8_

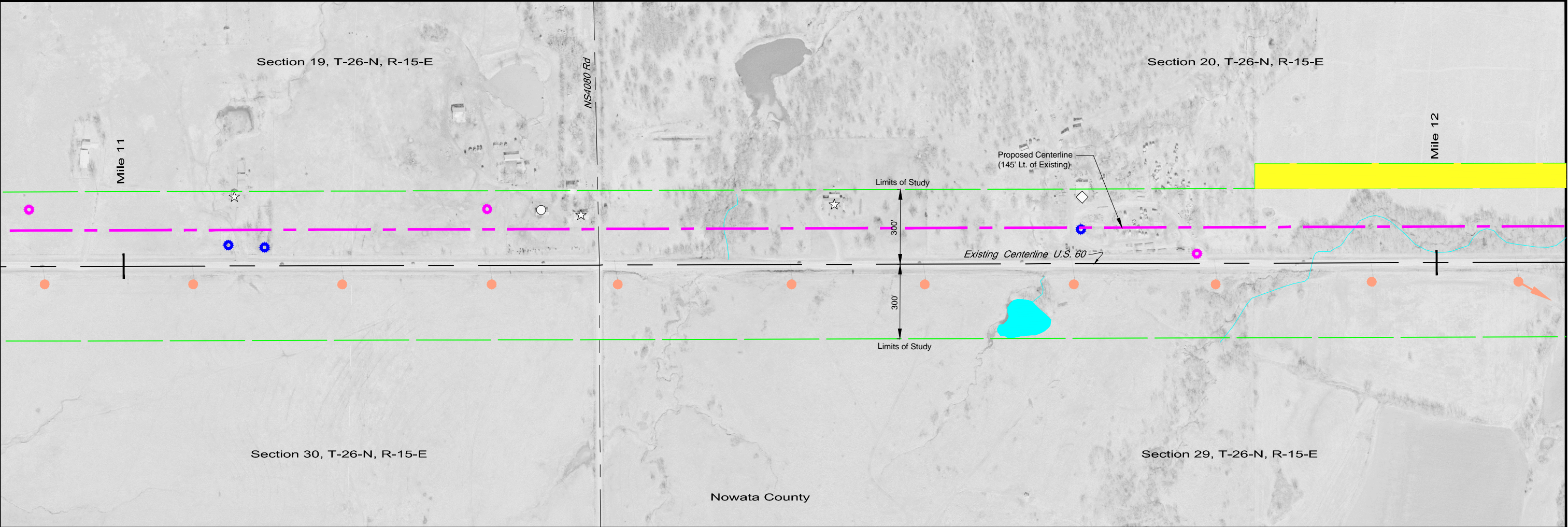


LEGEND

-   WATER FEATURE
-  FINAL CUT PIT IMPOUNDMENT
-  WETLAND
-  HAZARDOUS WASTE SITE
-  OIL SITE (ACTIVE)
-  OIL SITE (INACTIVE)
-  MAJOR UTILITY
-  RESIDENCE
-  BARN/SHED
-  SENSITIVE SITE
-  PARK
-  COMMERCIAL BUILDING

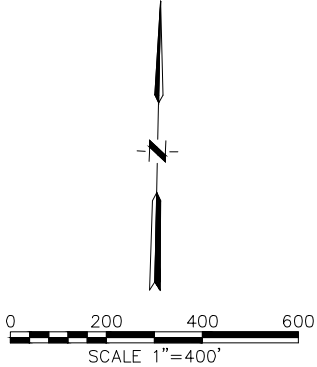


Survey	CKS	U.S. 60	NOWATA COUNTY
Drawn	CKD	NORTH MODIFIED PREFERRED ALTERNATE ENVIRONMENTAL CONSTRAINT MAP MILE 10.0 TO MILE 11.0	
Checked	CKE		
Approved			
Squad	C & K	JOB PIECE NO. EC882	SHEET NO. _9_

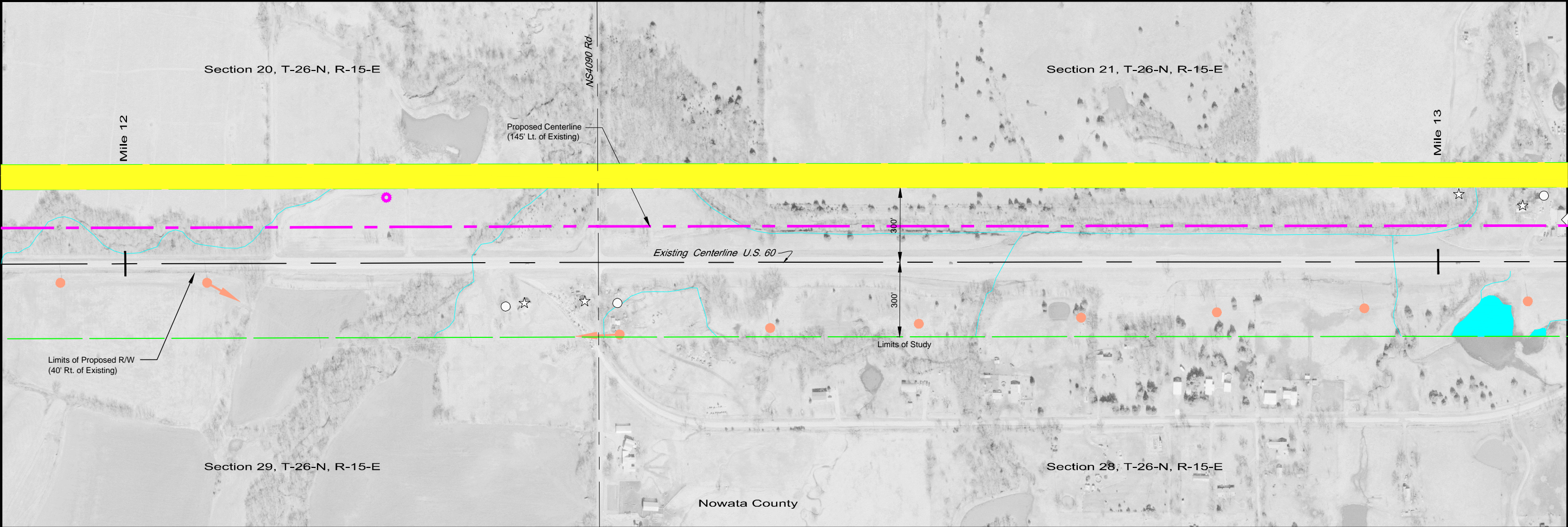


LEGEND

- WATER FEATURE
- FINAL CUT PIT IMPOUNDMENT
- WETLAND
- HAZARDOUS WASTE SITE
- OIL SITE (ACTIVE)
- OIL SITE (INACTIVE)
- MAJOR UTILITY
- RESIDENCE
- BARN/SHED
- SENSITIVE SITE
- PARK
- COMMERCIAL BUILDING
- EXPANDED STUDY AREA

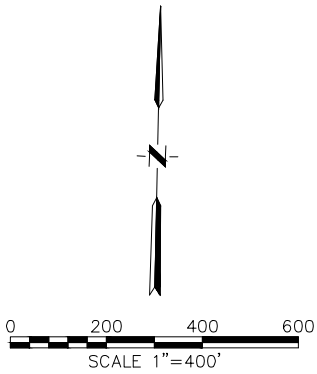


Survey	CKS	U.S. 60	NOWATA COUNTY
Drawn	CKD	NORTH MODIFIED PREFERRED ALTERNATE ENVIRONMENTAL CONSTRAINT MAP MILE 11.0 TO MILE 12.0	
Checked	CKE		
Approved			
Squad	C & K	JOB PIECE NO. EC882	SHEET NO. 10



LEGEND

- WATER FEATURE
- FINAL CUT PIT IMPOUNDMENT
- WETLAND
- HAZARDOUS WASTE SITE
- OIL SITE (ACTIVE)
- OIL SITE (INACTIVE)
- MAJOR UTILITY
- RESIDENCE
- BARN/SHED
- SENSITIVE SITE
- PARK
- COMMERCIAL BUILDING
- EXPANDED STUDY AREA

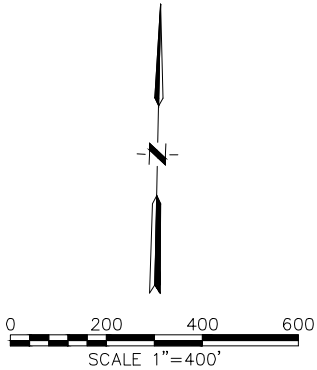


Survey	CKS	U.S. 60	NOWATA COUNTY
Drawn	CKD	NORTH MODIFIED PREFERRED ALTERNATE ENVIRONMENTAL CONSTRAINT MAP MILE 12.0 TO MILE 13.0	
Checked	CKE		
Approved			
Squad	C & K	JOB PIECE NO. EC882	SHEET NO. 11



LEGEND

- WATER FEATURE
- FINAL CUT PIT IMPOUNDMENT
- WETLAND
- HAZARDOUS WASTE SITE
- OIL SITE (ACTIVE)
- OIL SITE (INACTIVE)
- MAJOR UTILITY
- RESIDENCE
- BARN/SHED
- SENSITIVE SITE
- PARK
- COMMERCIAL BUILDING
- EXPANDED STUDY AREA



Survey	CKS	U.S. 60	NOWATA COUNTY
Drawn	CKD	NORTH MODIFIED PREFERRED ALTERNATE ENVIRONMENTAL CONSTRAINT MAP MILE 13.0 TO MILE 13.35	
Checked	CKE		
Approved			
Squad	C & K	JOB PIECE NO. EC882	SHEET NO. 12