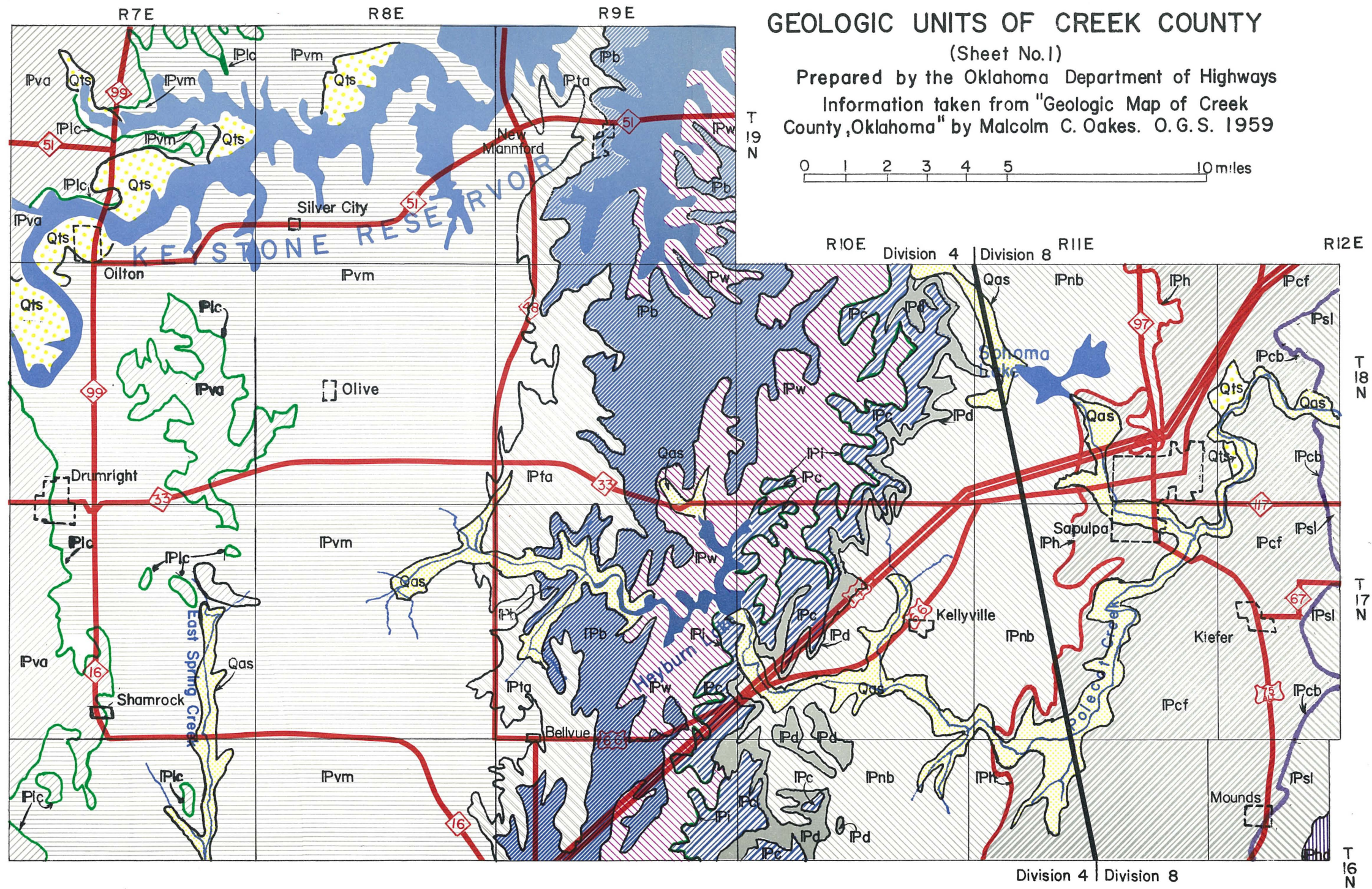
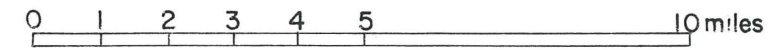


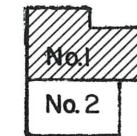
GEOLOGIC UNITS OF CREEK COUNTY

(Sheet No.1)

Prepared by the Oklahoma Department of Highways
 Information taken from "Geologic Map of Creek
 County, Oklahoma" by Malcolm C. Oakes. O.G.S. 1959



- | | | | |
|------|-------------------|--------|-------------------|
| Qas | Alluvium | Ip | Chanute Unit |
| Qts | Terrace Deposits | Ip | Dewey Unit |
| Ipva | Vanoss - Ada Unit | Ipn | Nellie Bly Unit |
| Iplc | Lecompton Unit | Iph | Hogshooter Unit |
| Ipvm | Vamoosa Unit | Ipcf | Coffeyville Unit |
| Ipta | Tallant Unit | Ipcb | Checkerboard Unit |
| Ipb | Barnsdall Unit | Ipsl | Seminole Unit |
| Ipw | Wann Unit | Iphd | Holdenville Unit |
| Ipl | Iola Unit | U Up | Fault |
| | | D Down | |



Division 4 | Division 8