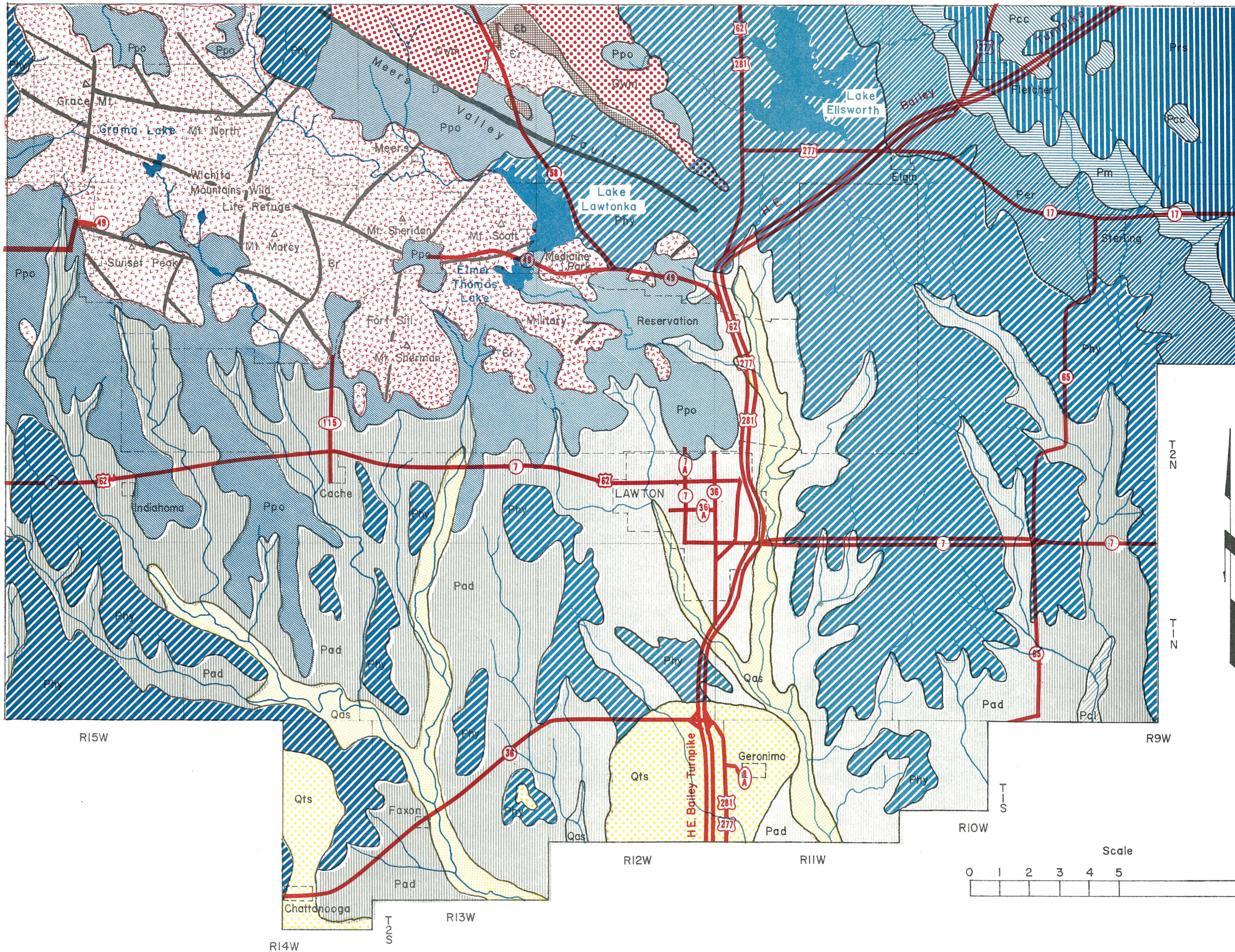


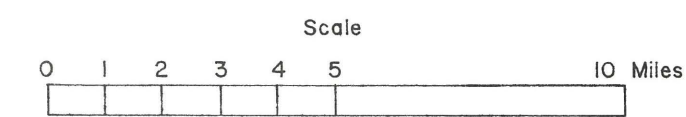
# GEOLOGIC UNITS OF COMANCHE COUNTY

Prepared by the Oklahoma Department of Highways

Information taken from: "Geology of Region II" by Robert O. Fay, from "The Appraisal of Water and Related Land Resources" by the Oklahoma Water and Resources Board, 1968; "Geologic Map of Oklahoma" by Hugh D. Miser and others U.S.G.S. 1954.



- Qas Alluvium
- Qts Terrace
- Pcc Cloud Chief Unit
- Prs Rush Springs Unit
- Pm Marlow Unit
- Per El Reno Unit
- Phy Hennessey Unit
- Ppo Post Oak Unit
- Pad Addington Unit
- Pcl Claypool Unit
- Own Upper Arbuckle Unit
- Eb Lower Arbuckle Unit
- Er Igneous Rock Unit
- U-Up Fault
- D-Down Fault



T 4 N

T 3 N

T 2 N

T 1 N

R15W

R9W

R12W

R11W

R10W

R13W

R14W

T 2 S