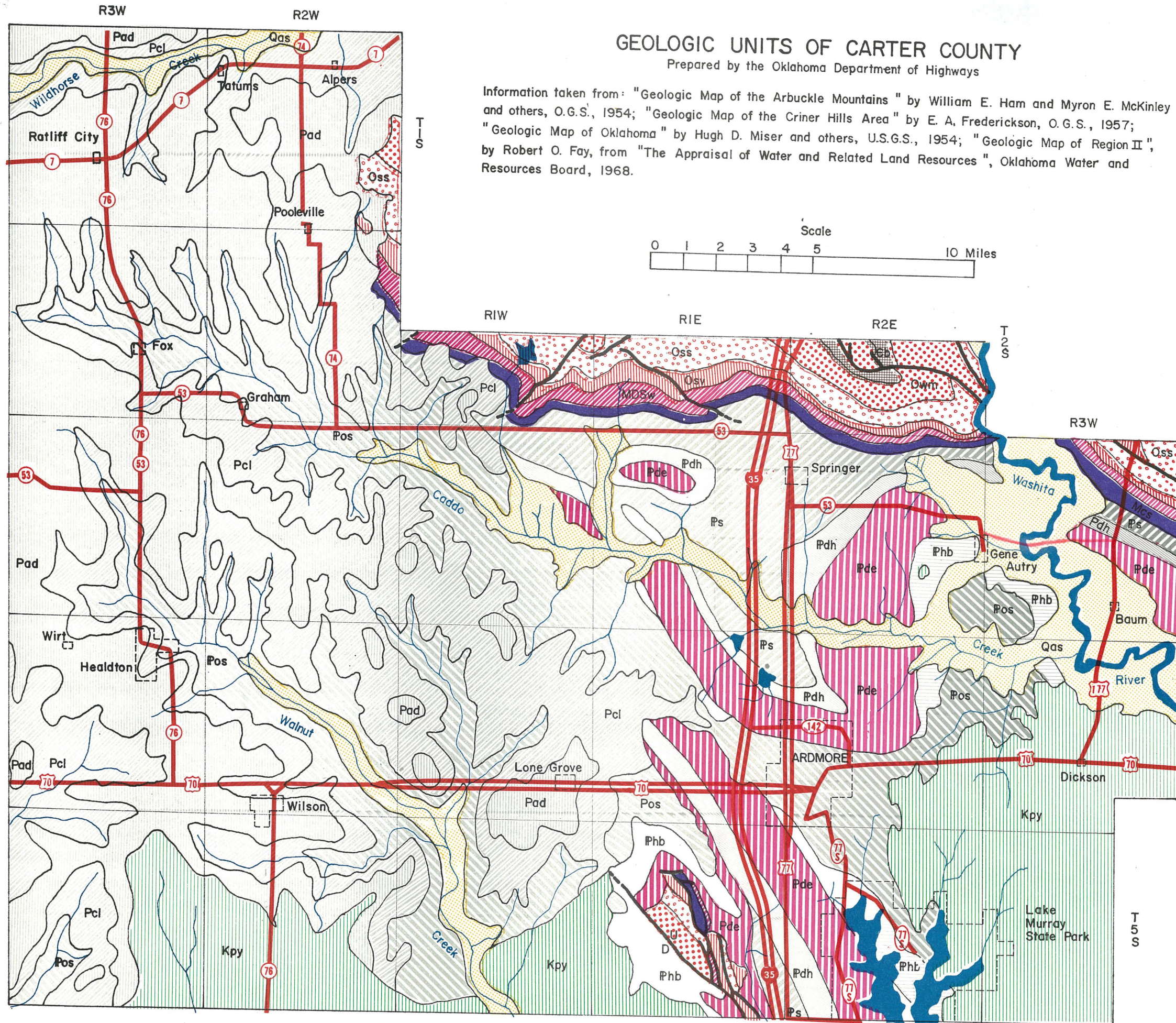
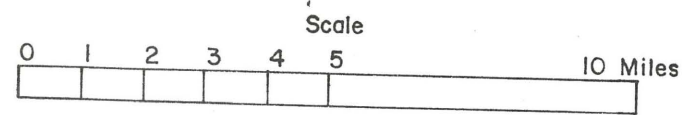


GEOLOGIC UNITS OF CARTER COUNTY

Prepared by the Oklahoma Department of Highways

Information taken from: "Geologic Map of the Arbuckle Mountains" by William E. Ham and Myron E. McKinley and others, O.G.S., 1954; "Geologic Map of the Criner Hills Area" by E. A. Frederickson, O.G.S., 1957; "Geologic Map of Oklahoma" by Hugh D. Miser and others, U.S.G.S., 1954; "Geologic Map of Region II", by Robert O. Fay, from "The Appraisal of Water and Related Land Resources", Oklahoma Water and Resources Board, 1968.



- | | | |
|--|----------------|----------------------|
| | Qas | Alluvium |
| | Kpy | Paluxy Unit |
| | Pad | Addington Unit |
| | Pcl | Claypool Unit |
| | Pos | Oscar Unit |
| | Phb | Hoxbar Unit |
| | Pde | Deese Unit |
| | Pdh | Dornick Hills Unit |
| | Ps | Springer Unit |
| | Mcs | Caney-Sycamore Unit |
| | MDSw | Woodford-Hunton Unit |
| | Osv | Sylvan-Viola Unit |
| | Oss | Simpson Unit |
| | Owm | Upper Arbuckle Unit |
| | Eb | Lower Arbuckle Unit |
| | U-Up D-Down | Fault |