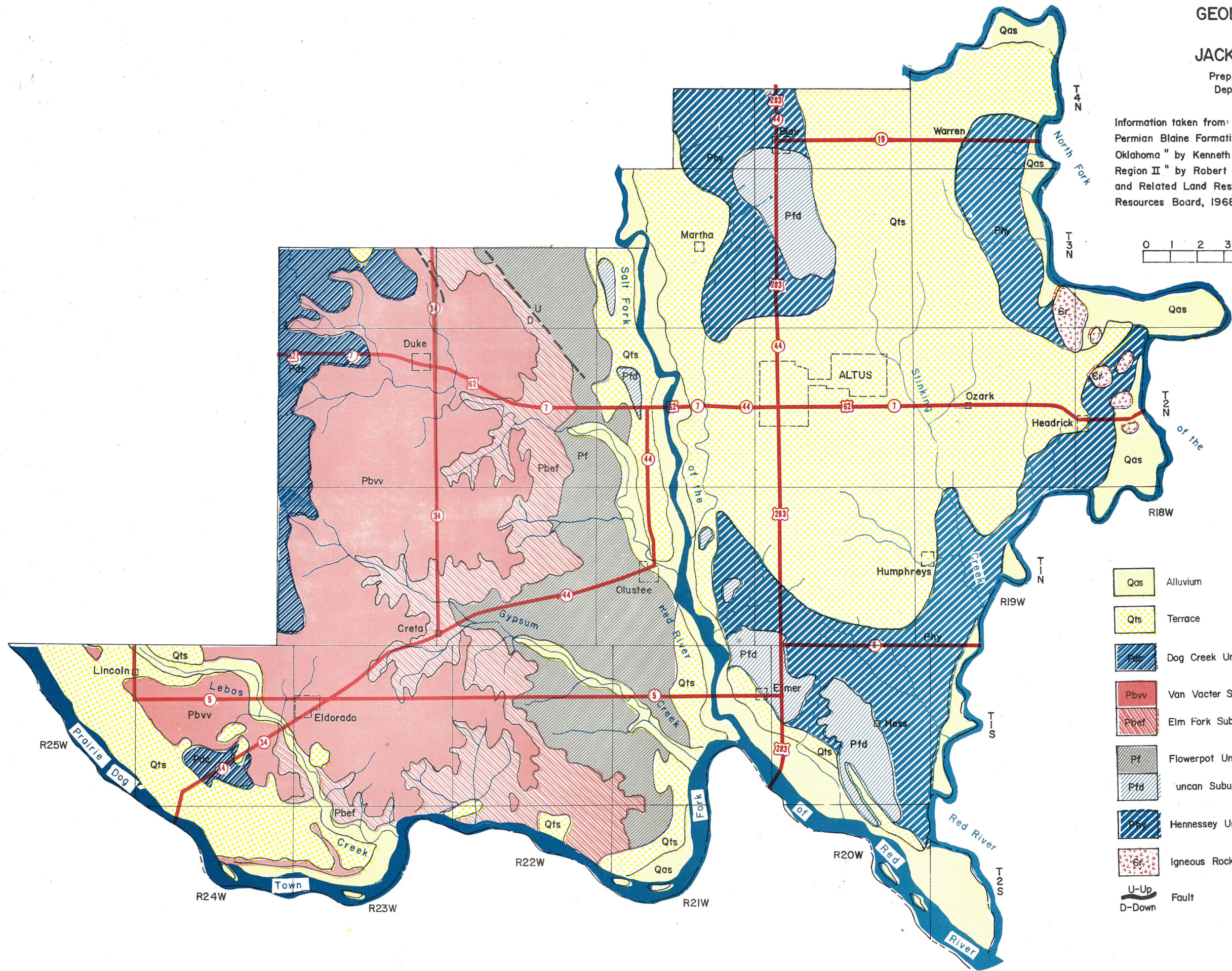
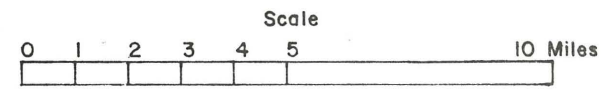


GEOLOGIC UNITS OF JACKSON COUNTY

Prepared by the Oklahoma Department of Highways

Information taken from: "Geology and Mineral Resources of the Permian Blaine Formation and Associated Strata of Southwestern Oklahoma" by Kenneth S. Johnson, O.G.S., 1969; "Geology of Region II" by Robert O. Fay from "The Appraisal of Water and Related Land Resources" by the Oklahoma Water and Resources Board, 1968.



- Qas Alluvium
 - Qts Terrace
 - Pfv Dog Creek Unit
 - Pbv Van Vacter Subunit
 - Pbf Elm Fork Subunit
 - Pf Flowerpot Unit
 - Pfduncan Subunit
 - Pfy Hennessey Unit
 - Gr Igneous Rocks Unit
 - U-Up Fault
 - D-Down Fault
- } Blaine Unit