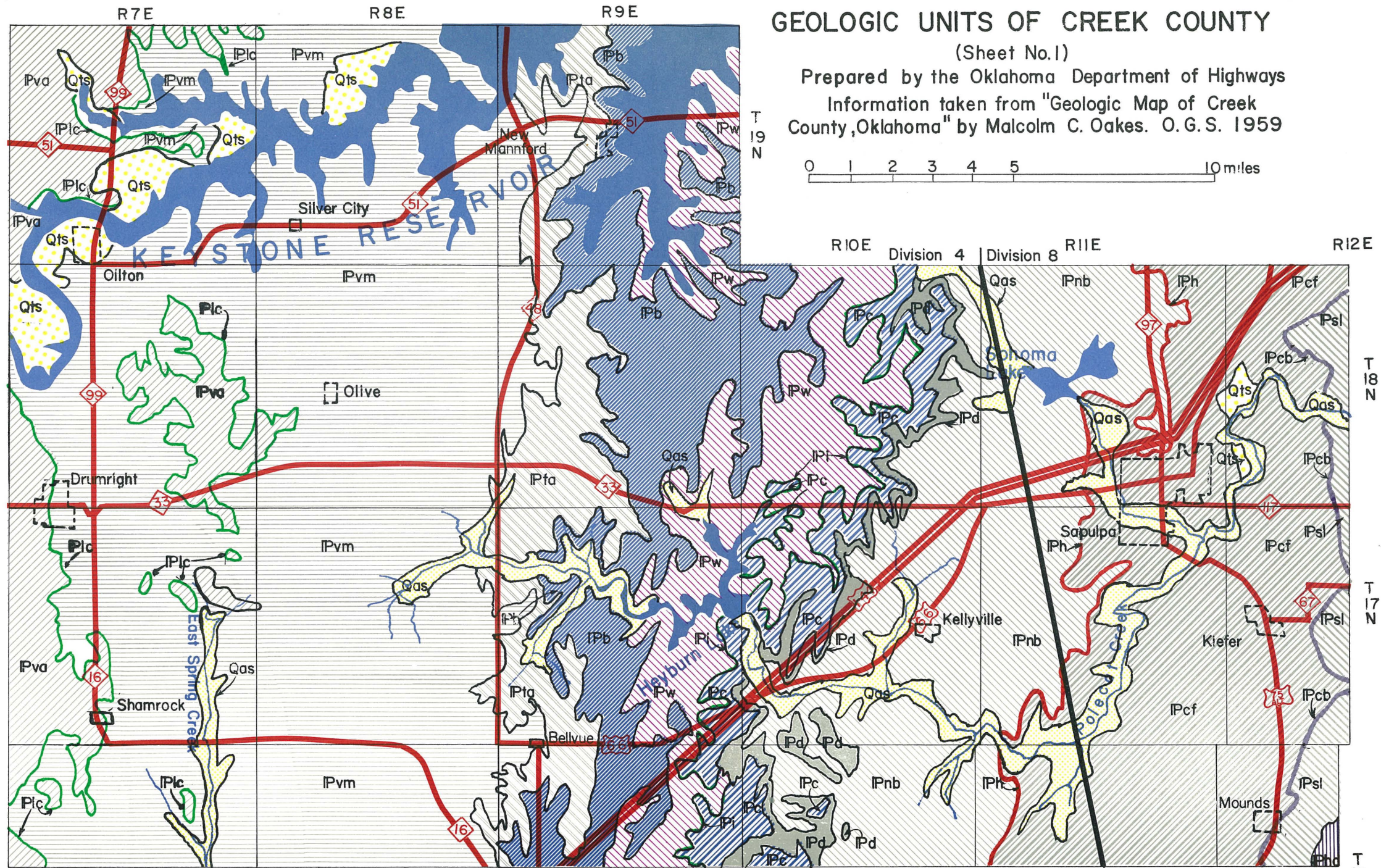
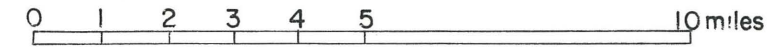


GEOLOGIC UNITS OF CREEK COUNTY

(Sheet No.1)

Prepared by the Oklahoma Department of Highways
 Information taken from "Geologic Map of Creek
 County, Oklahoma" by Malcolm C. Oakes. O.G.S. 1959



- | | | | |
|-----|-------------------|-----|-------------------|
| Qas | Alluvium | Pc | Chanute Unit |
| Qts | Terrace Deposits | Pd | Dewey Unit |
| Pva | Vanoss - Ada Unit | Pnb | Nellie Bly Unit |
| Plc | Lecompton Unit | Ph | Hogshooter Unit |
| Pvm | Vamoosa Unit | Pct | Coffeyville Unit |
| Pta | Tallant Unit | Pcb | Checkerboard Unit |
| Pb | Barnsdall Unit | Psl | Seminole Unit |
| Pw | Wann Unit | Phd | Holdenville Unit |
| Pl | Iola Unit | U/D | Fault |

