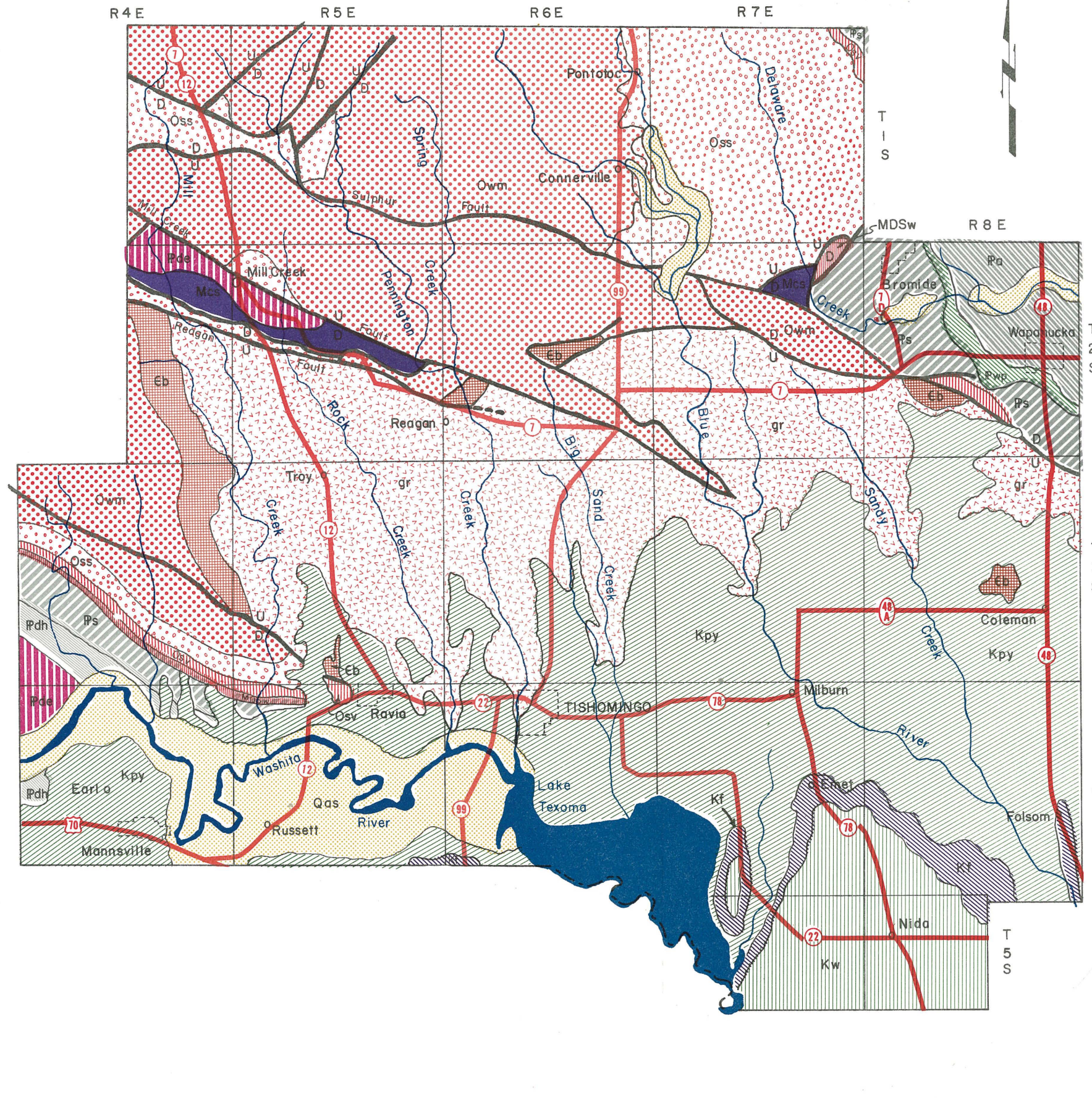
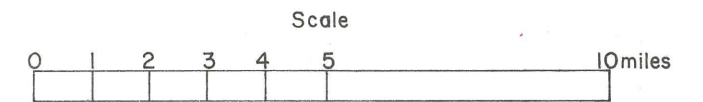


GEOLOGIC UNITS OF JOHNSTON COUNTY

Prepared by the Oklahoma Department of Highways
 Information taken from:
 "Geologic Map of Arbuckle Mountains"
 by William E. Ham and Myron E. McKinley and others
 O.G.S. 1954 and
 "Geologic Map of Oklahoma"
 by Hugh D. Miser and others U.S.G.S. 1954



- | | |
|--|-------------------------|
| | Alluvium |
| | Washita Unit |
| | Fredericksburg Unit |
| | Paluxy Unit |
| | Deese Unit |
| | Atoka Unit |
| | Dornick Hills Unit |
| | Wapanucka Unit |
| | Springer Unit |
| | Caney-Sycamore Unit |
| | Woodford-Hunton Unit |
| | Sylvan-Viola Unit |
| | Simpson Unit |
| | Upper Arbuckle Unit |
| | Lower Arbuckle Unit |
| | Tishomingo Granite Unit |
| | Fault |
| | Fault |