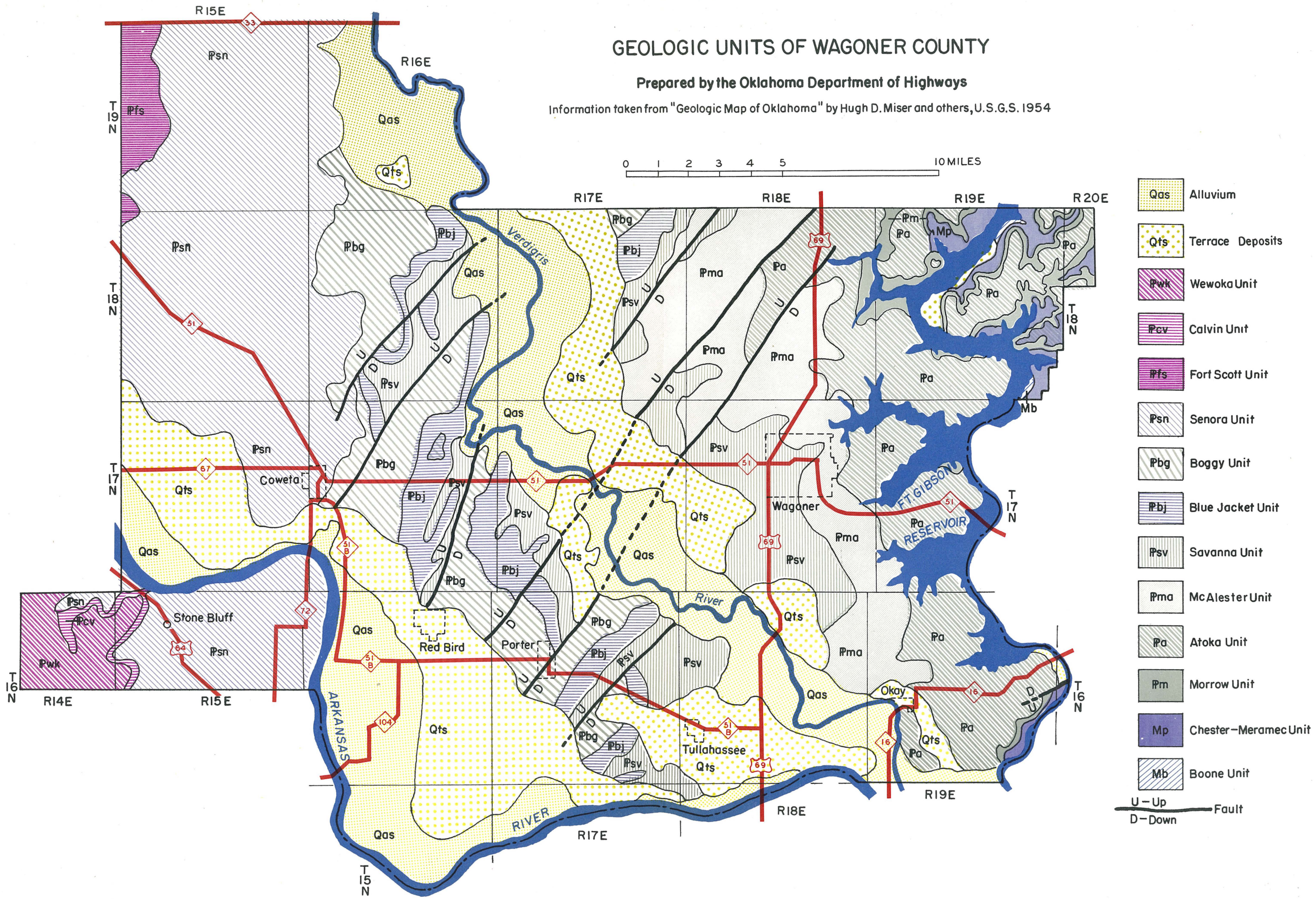


GEOLOGIC UNITS OF WAGONER COUNTY

Prepared by the Oklahoma Department of Highways

Information taken from "Geologic Map of Oklahoma" by Hugh D. Miser and others, U.S.G.S. 1954



- Qas Alluvium
- Qts Terrace Deposits
- Pwk Wewoka Unit
- Pcv Calvin Unit
- Pfs Fort Scott Unit
- Psn Senora Unit
- Pbg Boggy Unit
- Pbj Blue Jacket Unit
- Psv Savanna Unit
- Pma McAlester Unit
- Pa Atoka Unit
- Pm Morrow Unit
- Mp Chester-Meramec Unit
- Mb Boone Unit

U—Up
D—Down
Fault