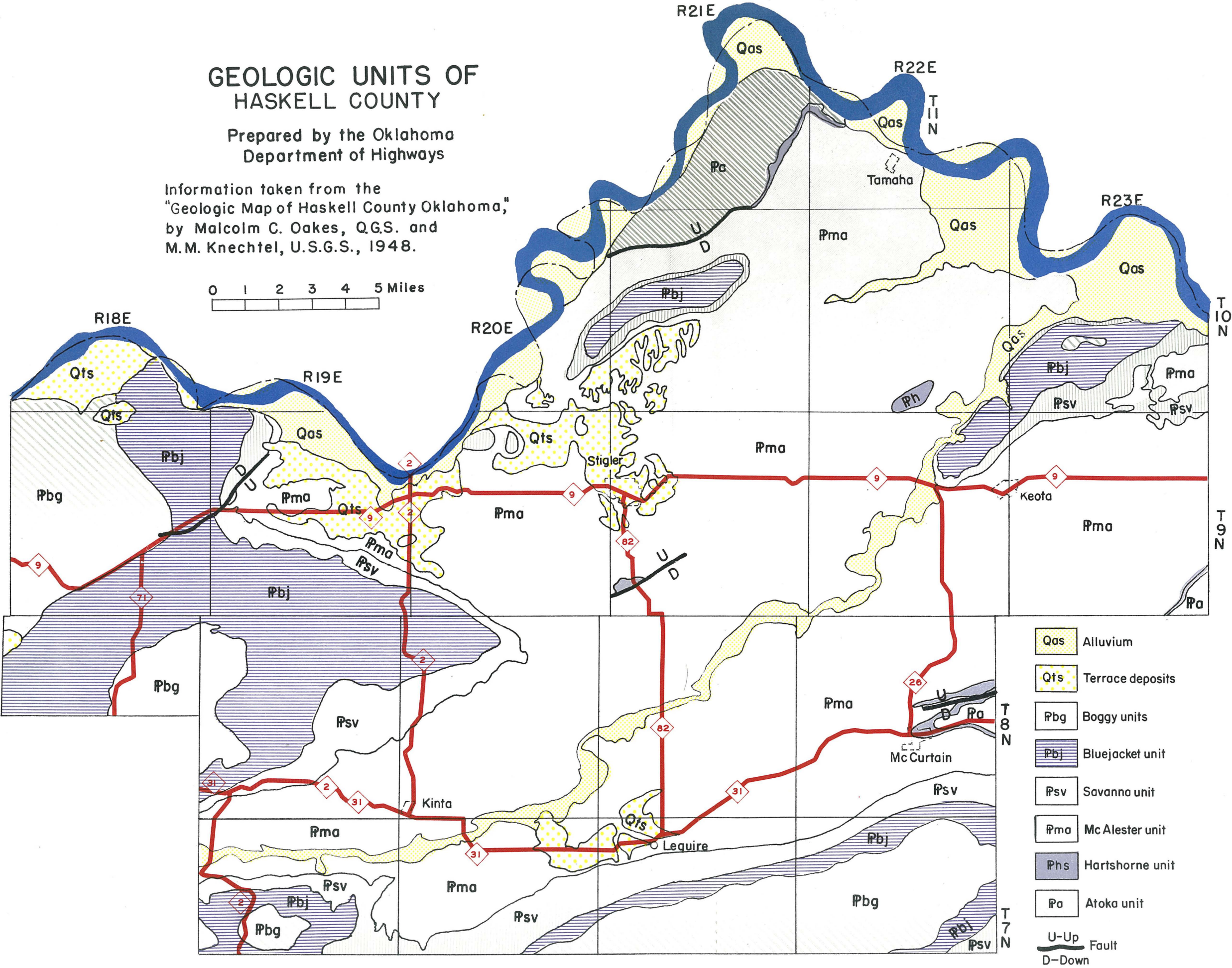
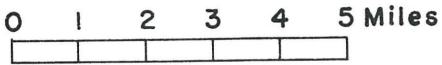


GEOLOGIC UNITS OF HASKELL COUNTY

Prepared by the Oklahoma
Department of Highways

Information taken from the
"Geologic Map of Haskell County Oklahoma,"
by Malcolm C. Oakes, Q.G.S. and
M.M. Knechtel, U.S.G.S., 1948.



- Qas Alluvium
- Qts Terrace deposits
- Pbg Boggy units
- Pbj Bluejacket unit
- Psv Savanna unit
- Pma McAlester unit
- Phs Hartshorne unit
- Pa Atoka unit
- U-Up Fault
- D-Down